

Organic Matter (N) Map

Municipality of Tumauni

Province of Isabela, Philippines

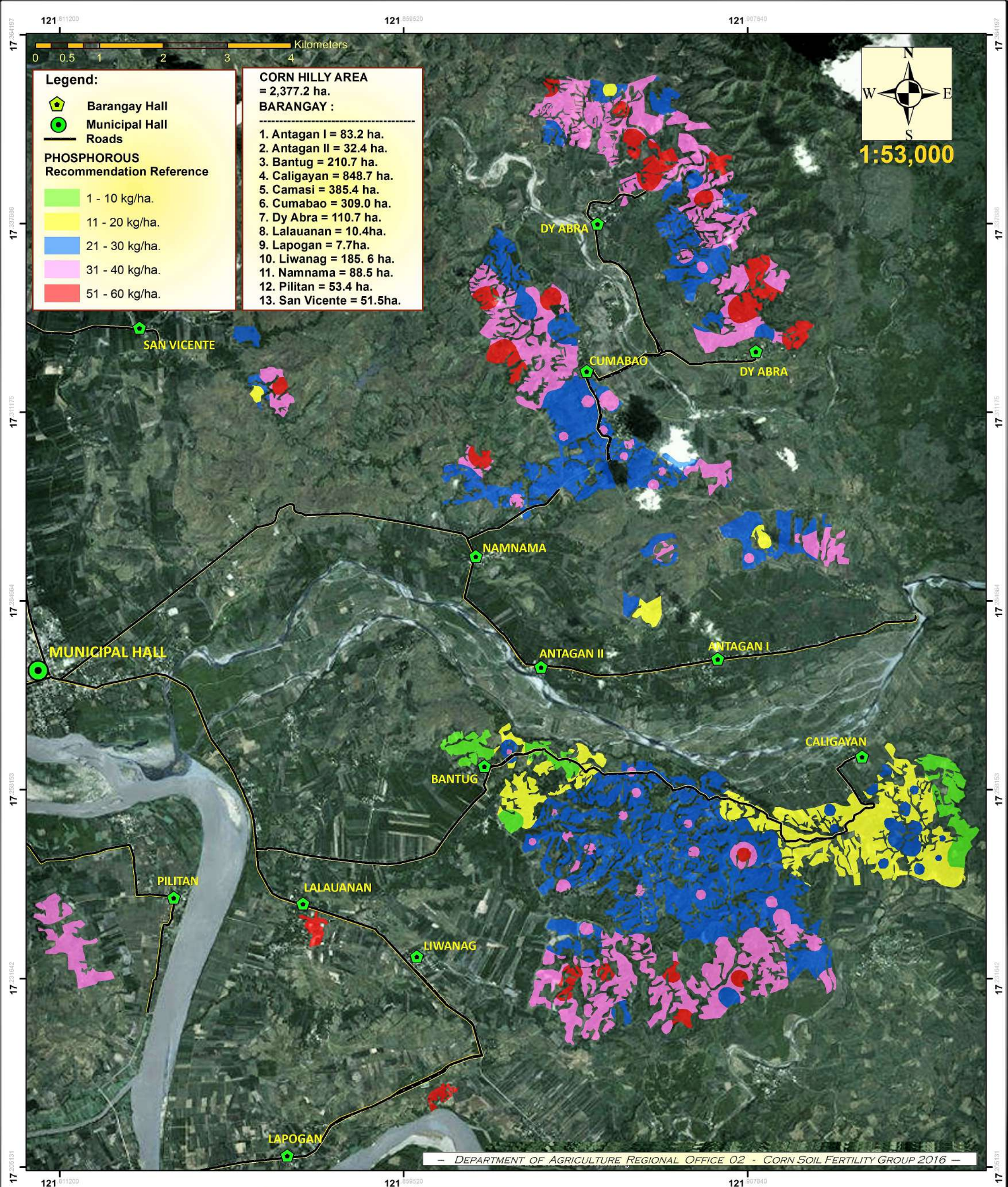
Datum: GCS_WGS_1984
Map Source: Google Earthwin V6.0.3.2197
© 2010 GOOGLE © 2013 Cnes / Spot Image © 2013 GOOGLE

This Corn Fertility Map was produced under the collaborative undertaking of the Department of Agriculture Regional Field Office No. 02, Regional Agricultural Engineering Division and the Local Government Unit, CY 2016. Boundaries are not considered authoritative.

The Department of Agriculture Regional Field Office No. 02 claims the sole responsibility by any omission/errors of this map. Users are requested to inform the DA-RFO 02, RAED, San Gabriel, Tuguegarao City, Cagayan. Fertilizer Recommendation Reference: Reliable for 3 years

Distributed by: Department of Agriculture, RFO 02
Regional Agricultural Engineering Division
Corn Soil Fertility Group
© Copy Right Reserved 2016-2017

Prepared by:	Reviewed by:
Jouie D. Sumigad	ANGELITA B. CALUBAQUIB Science Research Specialist II
Alister Earl M. Meman	Noted by:
Isagani S. Cabalsi	RESTITUTO E. SAMATRA Chief, RAED
Eleazar Gabriel A. Castillo	NENITA M. YABIS Asst. Regional Corn Coordinator
Geze James V. Binuyat	ORLANDO J. LORENZANA Regional Technical Director
Sally Jane P. Balbuena	LUCRECIO R. ALVIAR, JR., CESO III Regional Executive Director



Date Accomplished: December 2016

PHOSPHOROUS MAP

Municipality of Tumauni
Province of Isabela, Philippines

Datum: GCS_WGS_1984
Map Source: Google Earthwin V6.0.3.2197
© 2010 GOOGLE © 2013 Cnes / Spot Image © 2013 GOOGLE

This Corn Fertility Map was produced under the collaborative undertaking of the Department of Agriculture Regional Field Office No. 02, Regional Agricultural Engineering Division and the Local Government Unit, CY 2016. Boundaries are not considered authoritative.

The Department of Agriculture Regional Field Office No. 02 claims the sole responsibility by any omission/errors of this map. Users are requested to inform the DA-RFO 02, RAED, San Gabriel, Tuguegarao City, Cagayan. Fertilizer Recommendation Reference: Reliable for 3 years

Distributed by: Department of Agriculture, RFO 02
Regional Agricultural Engineering Division
Corn Soil Fertility Group
© Copy Right Reserved 2016-2017

Prepared by:

Jouie D. Sumigad

Alister Earl M. Meman

Isagani S. Cabalsi

Eleazar Gabriel A. Castillo

Geze James V. Binuyat

Sally Jane P. Balbuena

Reviewed by:

ANGELITA B. CALUBAQUIB
Science Research Specialist II

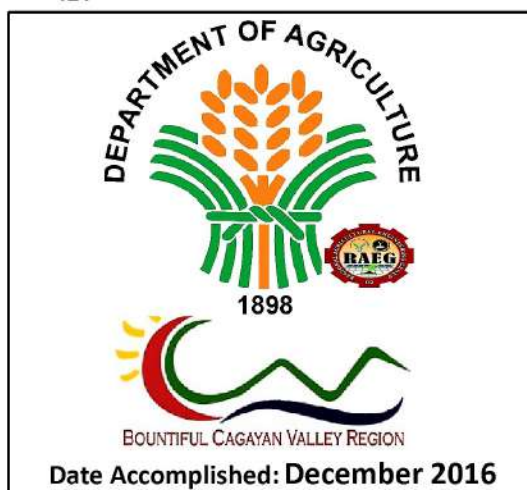
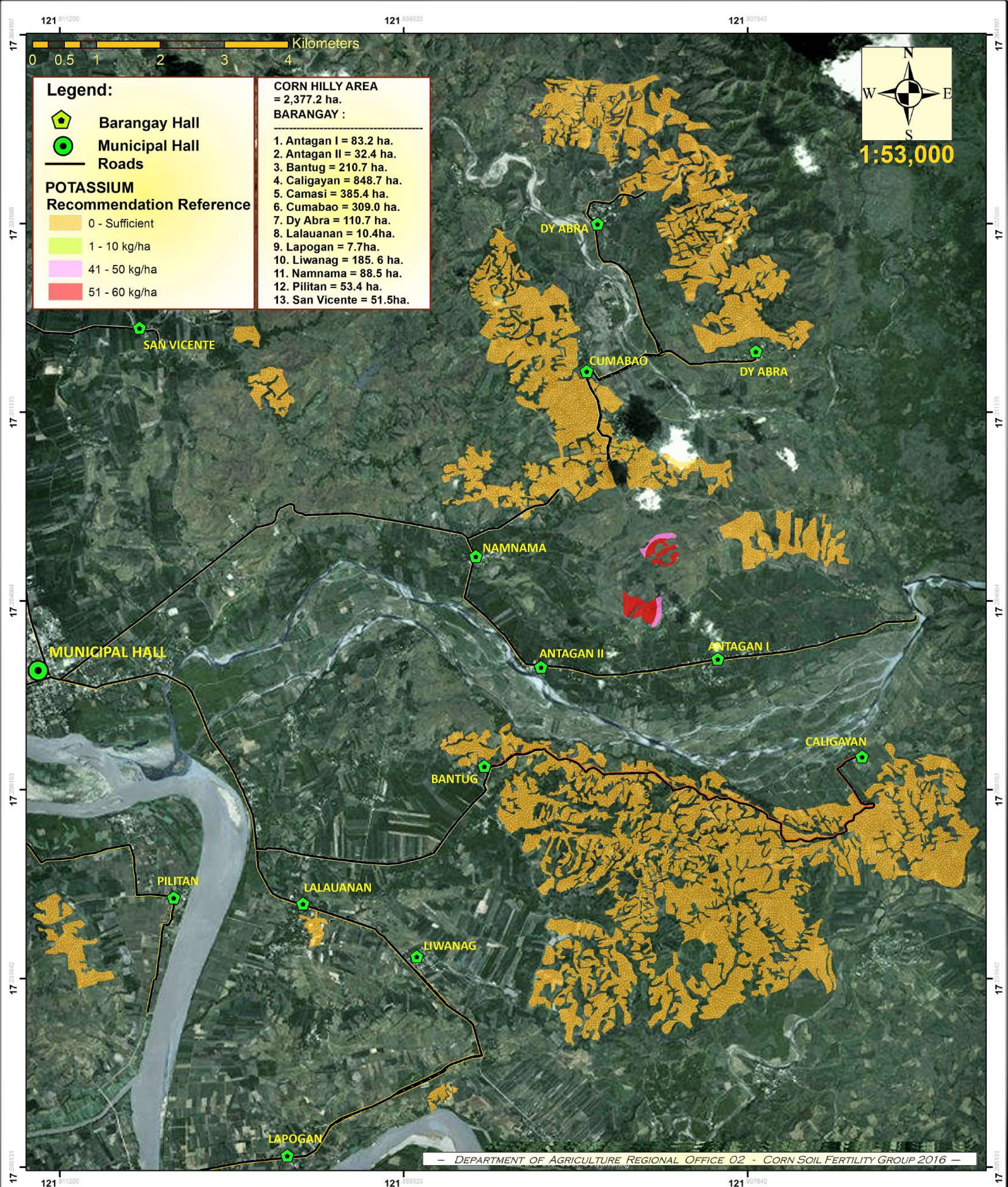
Noted by:

RESTITUTO E. SAMATRA
Chief, RAED

NENITA M. YABIS
Asst. Regional Corn Coordinator

ORLANDO J. LORENZANA
Regional Technical Director

LUCRECIO R. ALVIAR, JR., CESO III
Regional Executive Director



POTASSIUM MAP

Municipality of Tumauni

Province of Isabela, Philippines

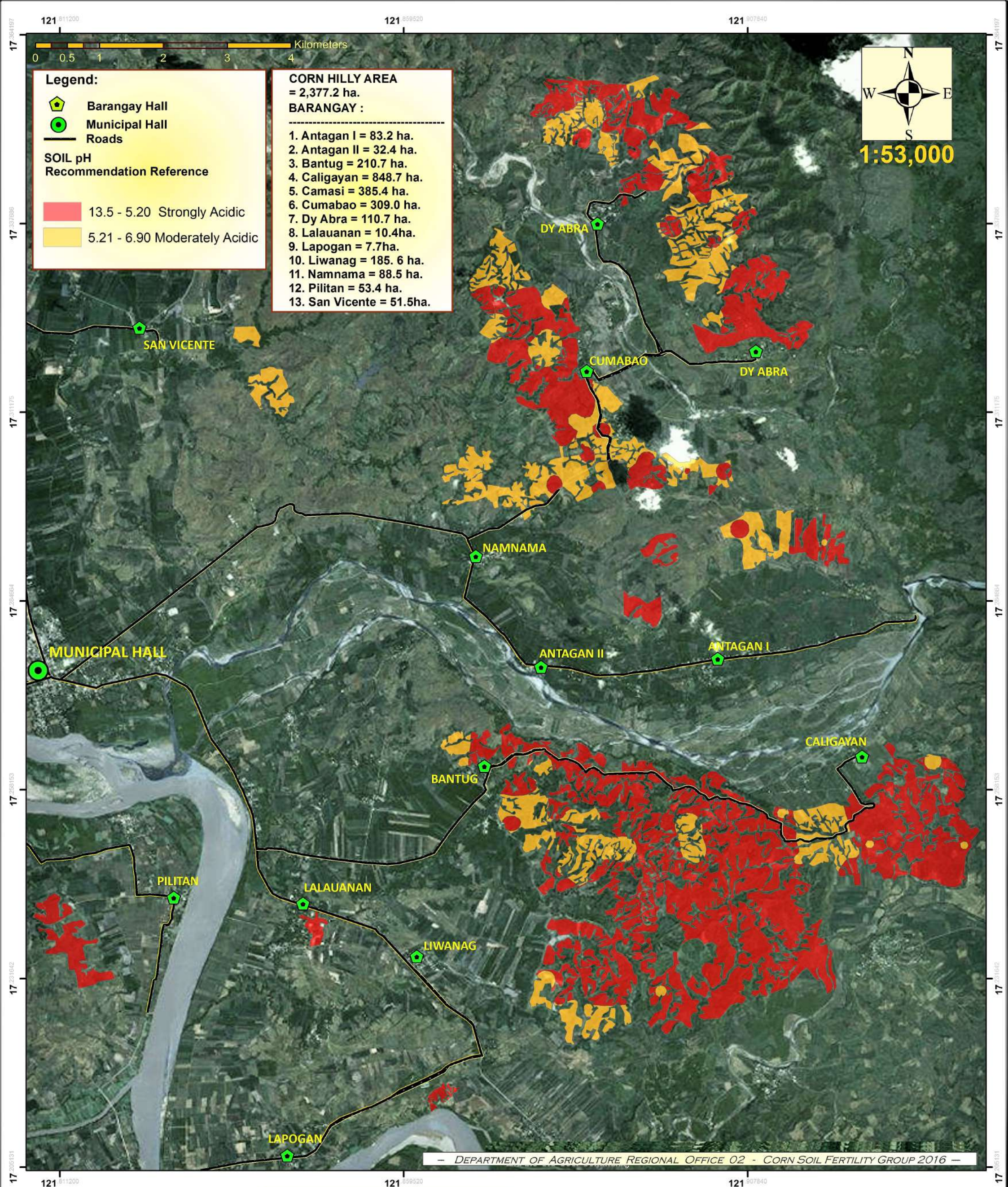
Datum: GCS_WGS_1984
Map Source: Google Earthwin V6.0.3.2197
© 2010 GOOGLE © 2013 Cnes / Spot Image © 2013 GOOGLE

This Corn Fertility Map was produced under the collaborative undertaking of the Department of Agriculture Regional Field Office No. 02, Regional Agricultural Engineering Division and the Local Government Unit, CY 2016. Boundaries are not considered authoritative.

The Department of Agriculture Regional Field Office No. 02 claims the sole responsibility by any omission/errors of this map. Users are requested to inform the DA-RFO 02, RAED, San Gabriel, Tuguegarao City, Cagayan. Fertilizer Recommendation Reference: Reliable for 3 years

Distributed by: Department of Agriculture, RFO 02
Regional Agricultural Engineering Division
Corn Soil Fertility Group
© Copy Right Reserved 2016-2017

Prepared by:	Reviewed by:
Jouie D. Sumigad	ANGELITA B. CALUBAQUIB Science Research Specialist II
Alister Earl M. Meman	Noted by:
Isagani S. Cabalsi	RESTITUTO E. SAMATRA Chief, RAED
Eleazar Gabriel A. Castillo	NENITA M. YABIS Asst. Regional Corn Coordinator
Geze James V. Binuyat	ORLANDO J. LORENZANA Regional Technical Director
Sally Jane P. Balbuena	LUCRECIO R. ALVIAR, JR., CESO III Regional Executive Director



Date Accomplished: December 2016

Soil pH Map

Municipality of Tumauni

Province of Isabela, Philippines

Datum: GCS_WGS_1984
Map Source: Google Earthwin V6.0.3.2197
© 2010 GOOGLE © 2013 Cnes / Spot Image © 2013 GOOGLE

This Corn Soil pH Map was produced under the collaborative undertaking of the Department of Agriculture Regional Field Office No. 02, Regional Agricultural Engineering Division and the Local Government Unit, CY 2016. Boundaries are not considered authoritative.

The Department of Agriculture Regional Field Office No. 02 claims the sole responsibility by any omission/errors of this map. Users are requested to inform the DA-RFO 02, RAED, San Gabriel, Tuguegarao City, Cagayan. Fertilizer Recommendation Reference: Reliable for 3 years

Distributed by: Department of Agriculture, RFO 02
Regional Agricultural Engineering Division
Corn Soil Fertility Group
© Copy Right Reserved 2016-2017

Prepared by:

Jouie D. Sumigad

Alister Earl M. Meman

Isagani S. Cabalsi

Eleazar Gabriel A. Castillo

Geze James V. Binuyat

Sally Jane P. Balbuena

Reviewed by:

ANGELITA B. CALUBAQUIB
Science Research Specialist II

Noted by:

RESTITUTO E. SAMATRA
Chief, RAED

NENITA M. YABIS
Asst. Regional Corn Coordinator

ORLANDO J. LORENZANA
Regional Technical Director

LUCRECIO R. ALVIAR, JR., CESO III
Regional Executive Director