


Corn Riverflood Areas = 984.75 Has.


Potassium (K) Recommendation Reference

- 0- Sufficient
- 1-10 kg/ha
- 11-20 kg/ha
- 21-30 kg/ha
- 31-40 kg/ha
- 41-50 kg/ha
- 51-60 kg/ha

- Legend:**
- Road
 - City Hall
 - Barangay Hall



K Map
Corn Riverflood Area
City of Tuguegarao
Province of Cagayan



Prepared by:

JOANA ROSE R. ROGUE	LORDAN P. LEONINO
BEVERLY ANNIE D. TAMAYAO	JOUE D. SUMIGAD
SALLY JANE P. BALBUENA	JOEY A. CALUCAG
ELEAZAR GABRIELA, CASTILLO	ISAGANI S. CABALLS

Reviewed by:

ANGELITA B. CALUBAQUIB Agriculturist II	MENTA M. YABIS Agril II / ARCC
GENEROSO M. OLI Engineer III	LUCRECIO R. ALVIRA, JR., CESO III Regional Executive Director
RESTITUTO E. SAMATELA Chief, RAEG	

17.551440

17.580484

17.609528

17.638572

17.667616

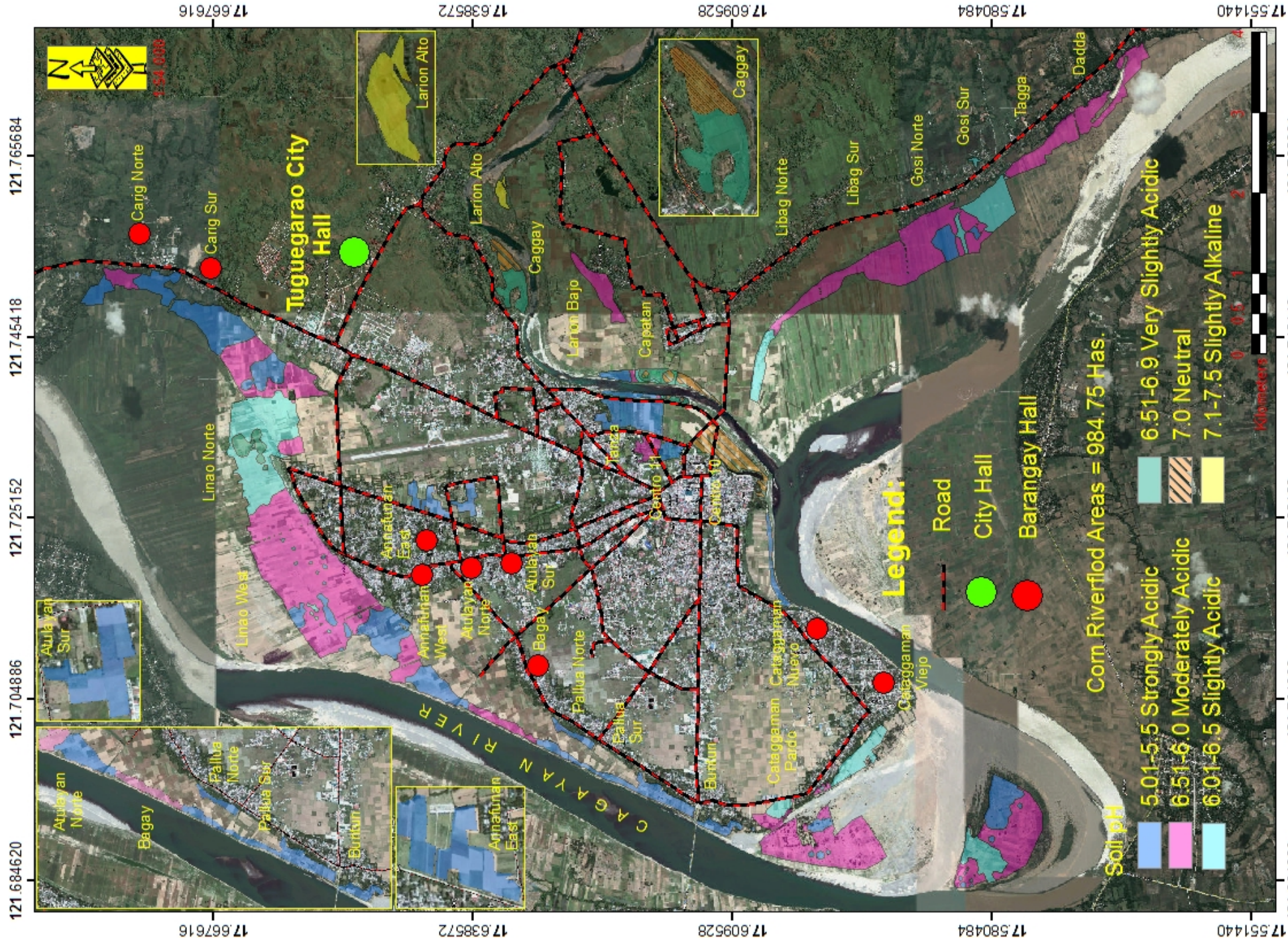
121.684620

121.704886

121.725152

121.745418

121.765684



Corn Riverflood Areas = 984.75 Has.

- Soil pH**
- 5.01-5.5 Strongly Acidic
 - 6.51-6.0 Moderately Acidic
 - 6.01-6.5 Slightly Acidic
 - 6.51-6.9 Very Slightly Acidic
 - 7.0 Neutral
 - 7.1-7.5 Slightly Alkaline

- Legend:**
- Road
 - City Hall
 - Barangay Hall

DEPARTMENT OF AGRICULTURE

PH Map

Corn Riverflood Area
City of Tuguegarao
Province of Cagayan

Prepared by:

JOAQUIN ROSE R. ROGUE	LORDAN P. LENTINO
BEVERLY ANNE D. TAMAYAO	JOUE D. SUINGAD
SALLY JANE P. BALBUENA	JOEY A. CALUCAG
ELEAZAR GABRIELA, CASTILLO	ISAGANI S. CABALLS

Reviewed by:

ANGELITA B. CALUBAQUIB Agriculturist II	NENTA M. YABILS Agr II / ARCC
GENIERSO M. OLI Engineer III	LUCRECIO R. ALVARO, JR., CESO III Regional Executive Director
RESTITUTO E. SAMATRA Chief, RAEG	

121.684620

121.704886

121.725152

121.745418

121.765684

17.551440

17.580484

17.609528

17.638572

17.667616