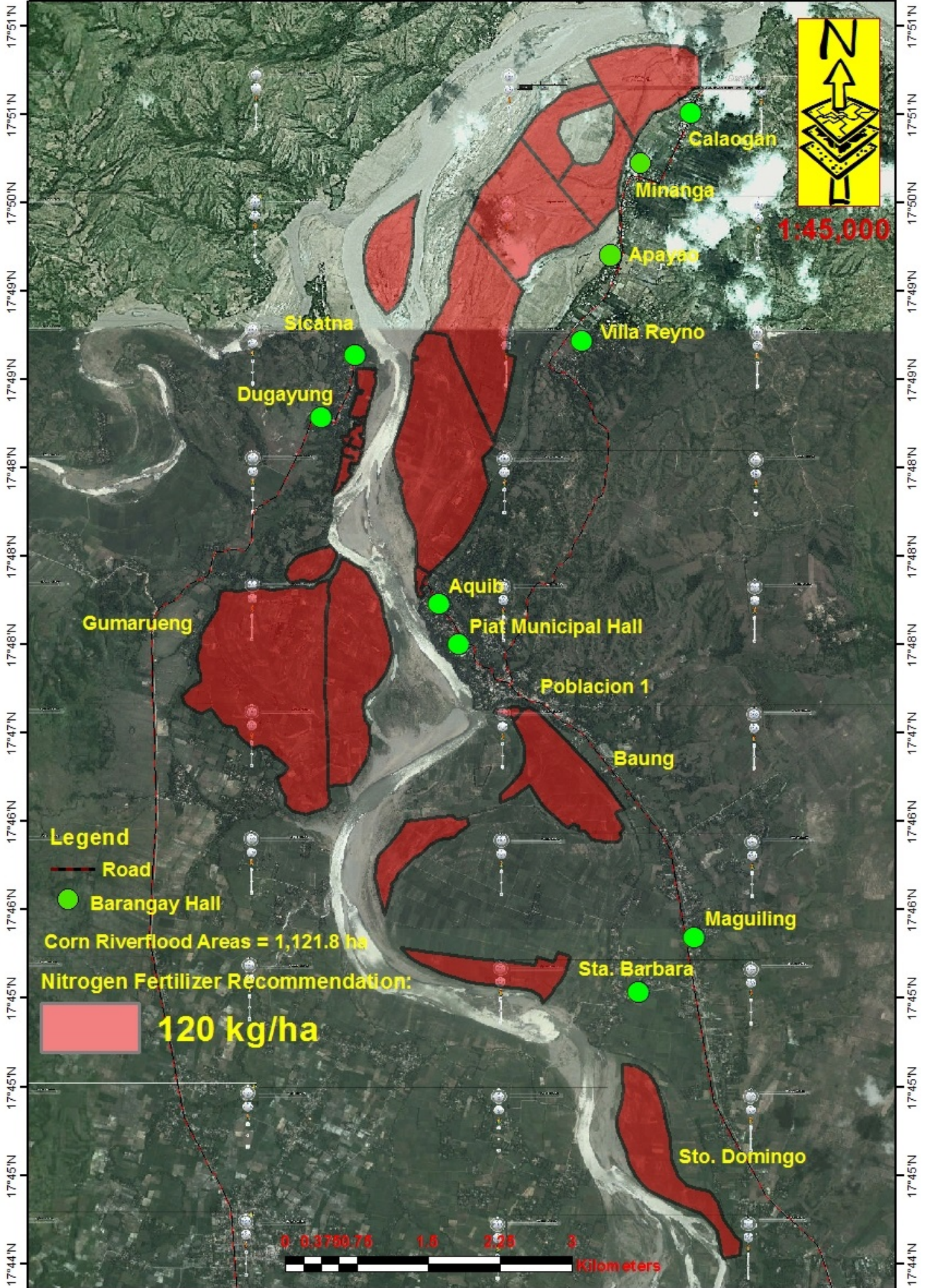


121°27'E 121°26'E 121°27'E 121°28'E 121°29'E 121°29'E 121°30'E 121°30'E 121°30'E 121°31'E



1:45,000

**Legend**

-  Road
-  Barangay Hall

Corn Riverflood Areas = 1,121.8 ha

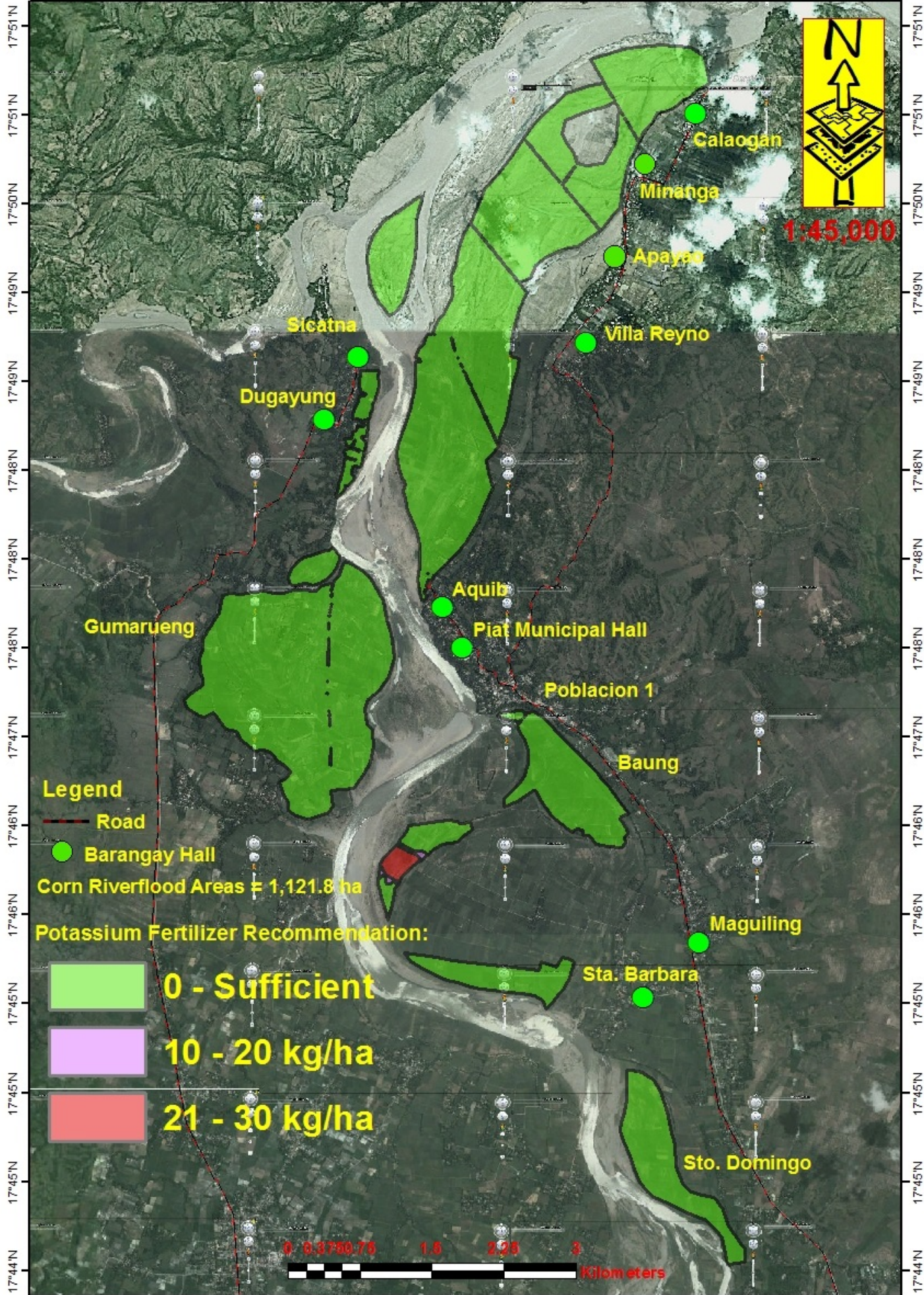
Nitrogen Fertilizer Recommendation:

 **120 kg/ha**

0 0.3750 0.75 1.5 2.25 3 Kilometers



121°27'E 121°26'E 121°27'E 121°28'E 121°29'E 121°29'E 121°30'E 121°30'E 121°30'E 121°31'E

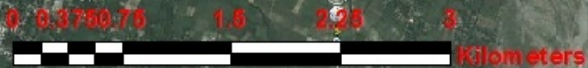


1:45,000

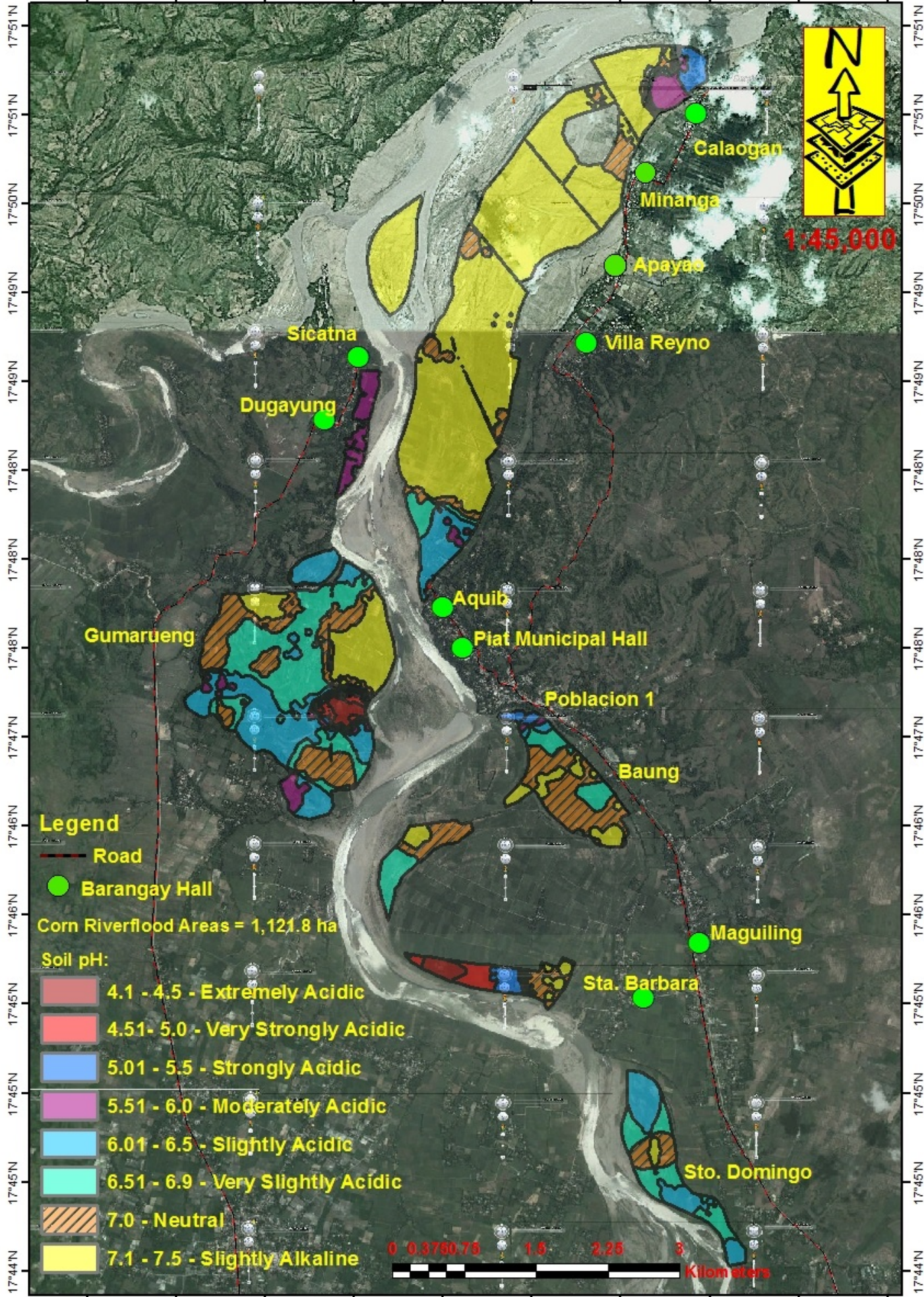
**Legend**

-  Road
-  Barangay Hall
- Corn Riverflood Areas = 1,121.8 ha**
- Potassium Fertilizer Recommendation:**

-  **0 - Sufficient**
-  **10 - 20 kg/ha**
-  **21 - 30 kg/ha**



121°27'E 121°26'E 121°27'E 121°28'E 121°29'E 121°29'E 121°30'E 121°30'E 121°30'E 121°31'E



1:45,000

**Legend**

— Road

● Barangay Hall

Corn Riverflood Areas = 1,121.8 ha

**Soil pH:**

- 4.1 - 4.5 - Extremely Acidic
- 4.51- 5.0 - Very Strongly Acidic
- 5.01 - 5.5 - Strongly Acidic
- 5.51 - 6.0 - Moderately Acidic
- 6.01 - 6.5 - Slightly Acidic
- 6.51 - 6.9 - Very Slightly Acidic
- 7.0 - Neutral
- 7.1 - 7.5 - Slightly Alkaline

0 0.3750.75 1.5 2.25 3 Kilometers