


**Corn Hilly Areas**  
Total Area : 2042.4 ha.

**Barangay:**

1. Agguaddan = 19.4
2. Baliuag = 239.5
3. Bical = 197.4
4. Bugatay = 32.1
5. Buyun = 48.3
6. Cabasan = 24.7
7. Cabbo = 37
8. Lapi = 222.38
9. Mailbabag = 8.28
10. Manga = 341.26
11. Minanga = 65.85
12. Nanguilattan = 287
13. Nannarian = 24.58
14. Quibal = 405.25
15. San Roque = 27.6
16. Sisim = 51.8

**DATE ACCOMPLISHED**  
JUNE, 2016

**NITROGEN MAP**  
CORN HILLY AREA  
Municipality of Peñafrancia  
Province of Cagayan, Philippines

Scale: 003, 003, 1/5K  
Map Series: Dept. Agr. Bureau 75123191  
© 2016 000024 © 2012 Dept. / Dept. Image © 2013 000018

This Map was produced under the collaborative undertaking of the Department of Agriculture Regional Field Office No. 02, Regional Agricultural Engineering Group and the Local Government Unit, Cagayan. Boundaries are not considered authoritative.

The Department of Agriculture Regional Field Office No. 02 retains the sole responsibility by way of a disclaimer / release of this map data as requested to inform the 20-870, 02, 0213, Site Based, Topographic City Geology, Soil Survey and Soil Science Reference, Schedule No. 3, year 2015.

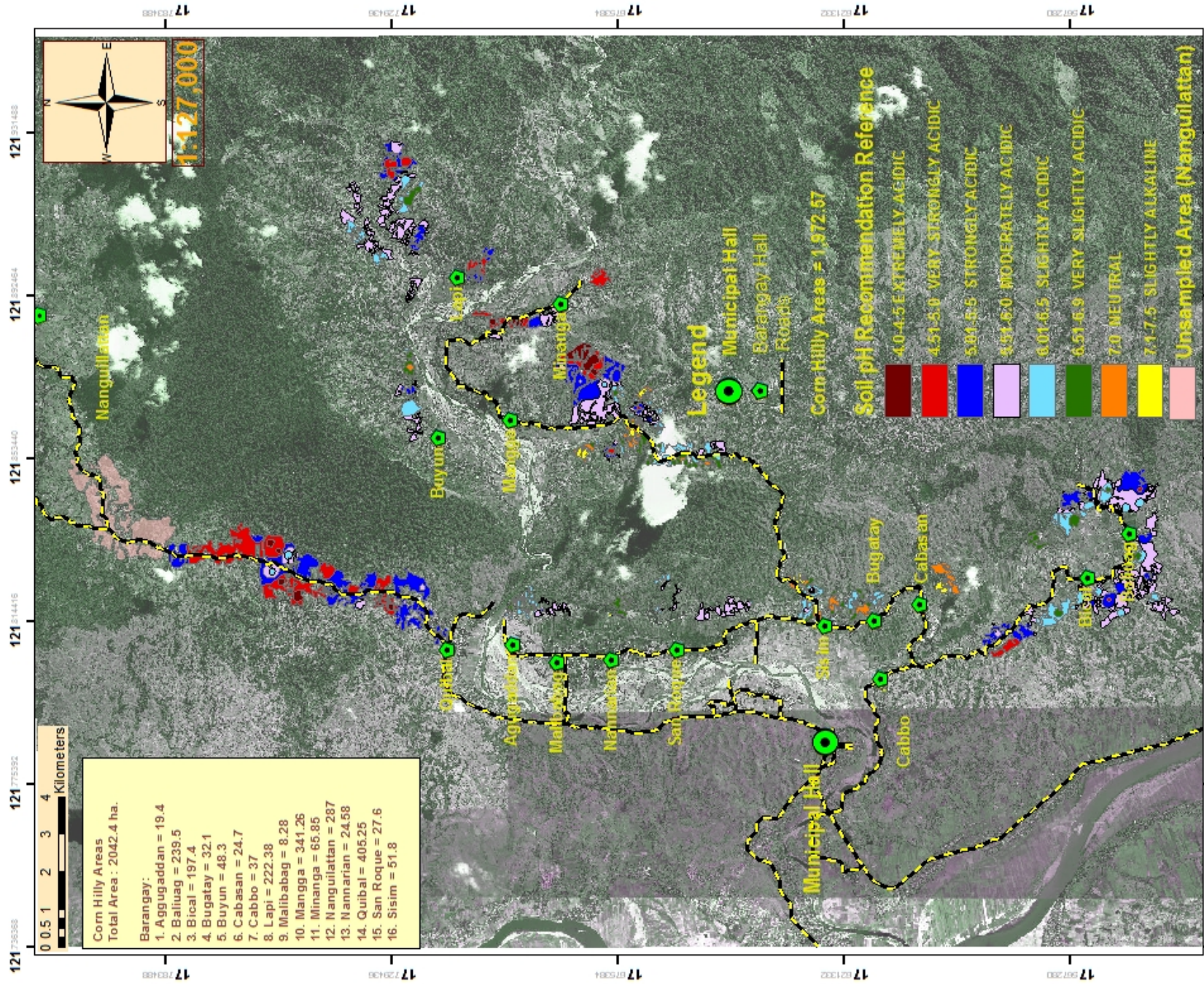
Reviewed by: Department of Agriculture, RFO 02  
Regional Agricultural Engineering Group  
Dept. Soil Fertility Group  
© 0097 Dept. Bureau 2016-2017

**Prepared by:**  
Geze James V. Binuyat  
Eleazar Gabriel A. Castillo  
Sally Jane P. Balbuena  
Isagani S. Cabalsi  
Jonie D. Sumigad  
Alister Earl M. Meman

**Reviewed by:**  
ANGELITA B. CALUBAQUIB  
Science Research Specialist II  
RESTIUTO E. SAMATRA  
Chief, RAED  
NENITA M. YABIS  
Asst. Regional Corn Coordinator  
ORLANDO I. LORENZANA  
Regional Technical Director  
LUCRECIO R. ALVIAR, JR., CESO III  
Regional Executive Director







**PH MAP**  
**CORN HILLY AREA**  
Municipality of Peñablanca  
Province of Cagayan, Philippines

Source: DGS, WGS\_1984  
Map Source: Google Earth, Version 7.6.2.21317  
© 2010 GOOGLE © 2010 DGS / Map Data © 2010 GOOGLE

This PH Map was produced under the collaborative undertaking of the Department of Agriculture Regional Field Office No. 02 Regional Agronomy Extension Group and the local Government Unit, CR 2015 Numbered as an confidential instrument.

The Department of Agriculture Regional Field Office No. 02 claims the sole responsibility for any mistakes / errors of this map. However, requests to Bureau of Soils, DGS, RA 6703, RA 8533, Soil Guidelines, Topographic Data, Geology, Soil Profile, Numerical Data, etc. should be made for 1 year.

Prepared by: Department of Agriculture, RFO 02  
Regional Agronomy Extension Group  
Gen. Sili Southern Camp  
© Copy Right Reserved 2016/2017

<b>Prepared by:</b>	<b>Reviewed by:</b>
Geze James V. Binuyat	ANGELITA B. CALUBAQUIB Science Research Specialist II
Eleazar Gabriel A. Castillo	RESTITUTO E. SAMATRA Chief, RAED
Sally Jane P. Balbuena	NENITA M. YABIS Asst. Regional Com Coordinator
Isagani S. Cabalsi	ORLANDO J. LORENZANA Regional Technical Director
Jouie D. Sumigad	LUCRECIO R. ALVIAR, JR., CESO III Regional Executive Director
Alister Earl M. Memman	