

NITROGEN MAP

Municipality of Lallo
Province of Cagayan, Philippines

DATE ACCOMPLISHED:
JULY 2016



Prepared by:

Geze James V. Binuyat Isagani S. Cabalsi

Sally Jane P. Balbuena Jouie D. Sumigad

Eleazar Gabriel A. Castillo Alister Earl M. Meman

Reviewed by:

ANGELITA B. CALUBAQUE NENITA M. YABIS
Science Research Specialist II Asst. Regional Com Coordinator

RESTITUTO E. SAMATRA ORLANDO I. LORENZANA
Chief, RAED Regional Technical Director

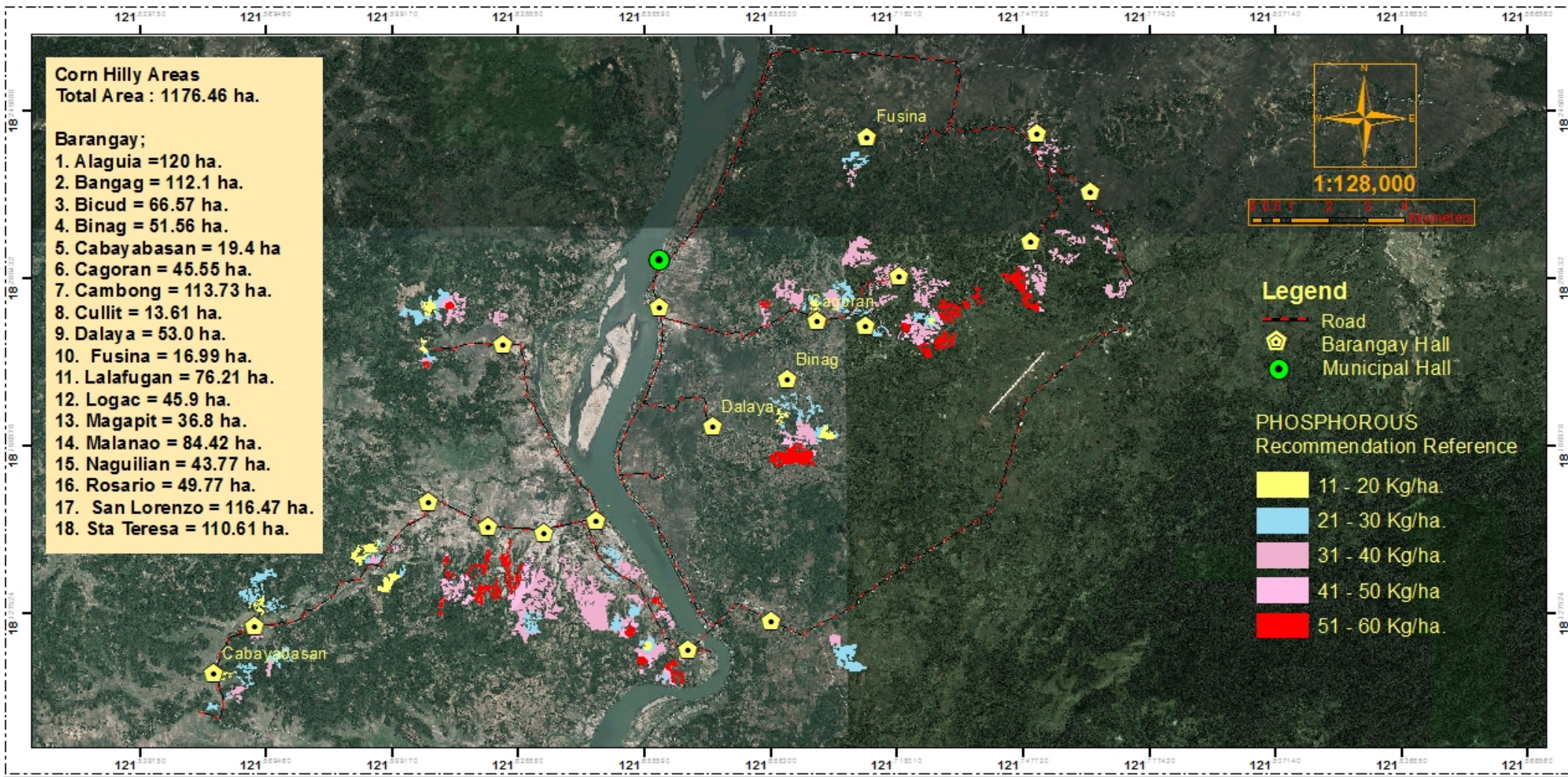
LUCRECIO R. ALVIAR, JR. CESO III
Regional Executive Director

Item #: GC3_WSS_1894
Map Source: Google Earth™ Ver. 8.3.2197
© 2010 G00GIS © 2013 G01S / Spot Image © 2013 G00GIS

This Map was produced under the collaborative undertaking of the Department of Agriculture Regional Field Office No. 02, Regional Agricultural Engineering Group and the Local Government Unit, CT 2016. Boundaries are not considered authoritative.

The Department of Agriculture Regional Field Office No. 02 claims the sole responsibility for any omission / errors of this map. Users are requested to inform the RAED, San Gabriel, Tuguegarao City, Cagayan. Fertilizer Recommendation Reference: Reliable for 3 years.

Distributed by: Department of Agriculture, RFO 02
Regional Agricultural Engineering Group
Com Soil Fertility Group
© Copy Right Reserved 2016-2017



PHOSPHOROUS MAP
Municipality of Lallo
Province of Cagayan, Philippines

DATE ACCOMPLISHED:
JULY 2016

Prepared by:
Geze James V. Binuyat
Sally Jane P. Balbuena
Eleazar Gabriel A. Castillo
Isagani S. Cabalsi
Jouie D. Sumigad
Alister Earl M. Mema

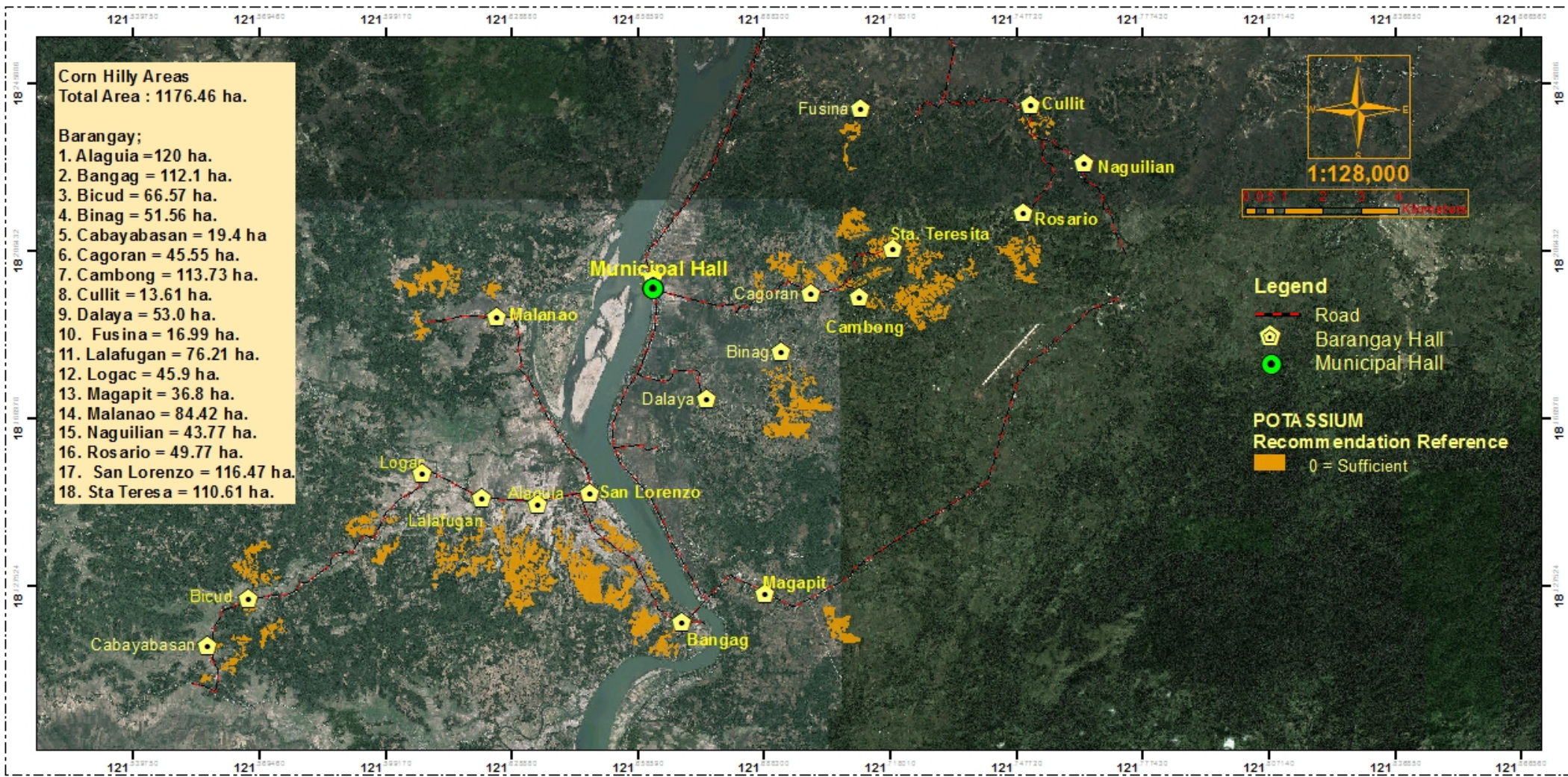
Reviewed by:
ANGELITA B. CALUBAQUIB
Science Research Specialist II
RESTITUTO E. SAMATRA
Chief, RAED
NENITA M. YABIS
Asst. Regional Corn Coordinator
ORLANDO I. LORENZANA
Regional Technical Director
LUCRECIO R. ALVIAR, JR., CESO III
Regional Executive Director

Item: GIS_WGS_1894
Map Source: Google Earth™ V8.3.2197
© 2010 GOOGLE © 2013 CES / Spot Image © 2013 GOOGLE

This Map was produced under the collaborative undertaking of the Department of Agriculture Regional Field Office No. 02, Regional Agricultural Engineering Group and the Local Government Unit, CT 2018
Boundaries are not considered authoritative

The Department of Agriculture Regional Field Office No. 02 claims the sole responsibility by any omission / errors of this map. Users are requested to inform the RA-ETO 02, RAEG, San Gabriel, Tuguegarao City, Cagayan.
Fertilizer Recommendation Reference: Reliable for 3 years

Distributed by: Department of Agriculture, ETO 02
Regional Agricultural Engineering Group
Corn Soil Fertility Group
© Copy Right Reserved 2018-2017



POTASSIUM MAP

Municipality of Lallo
Province of Cagayan, Philippines

DATE ACCOMPLISHED:
JULY 2016



Prepared by:

Geze James V. Binuyat Isagani S. Cabalsi
Sally Jane P. Balbuena Jouie D. Sumigad
Elezar Gabriel A. Castillo Alister Earl M. Meman

Reviewed by:

ANGELITA B. CALUBAQUIB
Science Research Specialist II

NENITA M. YABIS
Asst. Regional Corn Coordinator

RESTITUTO E. SAMATRA
Chief, RAED

ORLANDO J. LORENZANA
Regional Technical Director

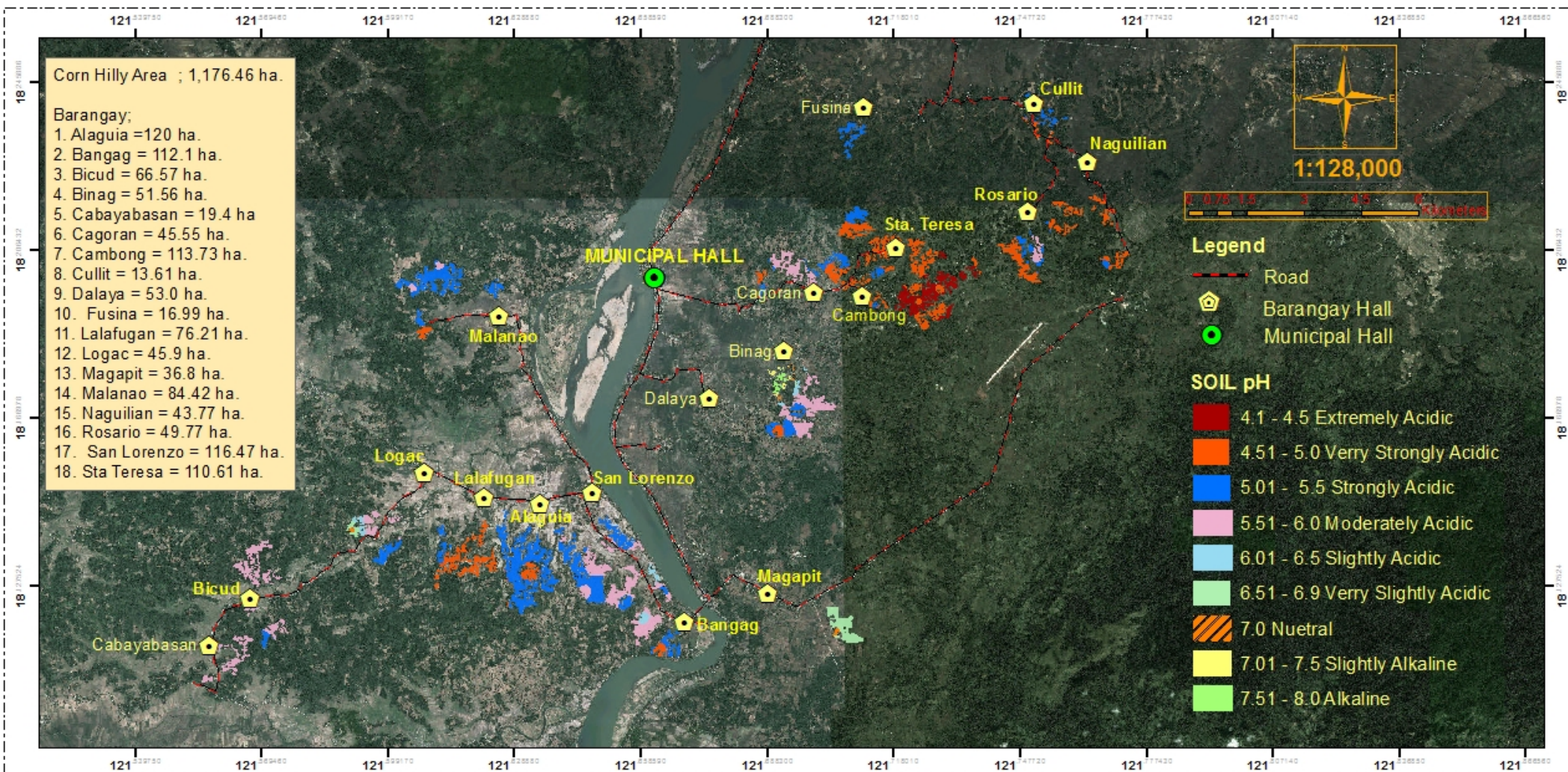
LUCRECIO R. ALVIAR, JR. CESO III
Regional Executive Director

Date: GIS_WGS_1984
Map Source: Google Earth™ V8.3.2197
© 2010 GOOGLE © 2013 Cees / Spot Image © 2013 GOOGLE

This map was produced under the collaborative undertaking of the Department of Agriculture Regional Field Office No. 02, Regional Agricultural Engineering Group and the Local Government Unit, CT 2016. Boundaries are not considered authoritative.

The Department of Agriculture Regional Field Office No. 02 claims the sole responsibility for any omission / errors of this map. Users are requested to inform the RA-RFO 02, RAED, San Gabriel, Tuguegarao City, Cagayan. Fertilizer Recommendation Reference: Reliable for 3 years

Distributed by: Department of Agriculture, RFO 02
Regional Agricultural Engineering Group
Corn Soil Fertility Group
© Copy Right Reserved 2016-2017



SOIL pH Map

Municipality of Lallo
Province of Cagayan, Philippines



DATE ACCOMPLISHED:
JULY 2016

Prepared by:

Geze James V. Binuyat Isagani S. Cabalsi

Sally Jane P. Balbuena Jouie D. Sumigad

Eleazar Gabriel A. Castillo Alister Earl M. Meman

Reviewed by:

ANGELITA B. CALUBAQUIB
Science Research Specialist II

RESTITUTO E. SAMAITRA
Chief, RAED

LUCRECIO R. ALVIAR, JR. CESO III
Regional Executive Director

NENITA M. YABIS
Asst. Regional Corn Coordinator

ORLANDO I. LORENZANA
Regional Technical Director

Date: 03_WIS_1894
Map Source: Google Earth™ V8.3.2107
© 2010 600 GIS © 2010 Cues / Spot Image © 2010 600 GIS

This pH Map was produced under the collaborative undertaking of the Department of Agriculture Regional Field Office No. 02, Regional Agricultural Engineering Group and the Local Government Unit, CY 2016. Boundaries are a not considered authoritative.

The Department of Agriculture Regional Field Office No. 02 claims the sole responsibility for any omission / errors of this map. Users are requested to inform the RA-ETO 02, RAED (San Gabriel) Tuguegarao City, Cagayan. Fertilizer Recommendation Reference Reliable for 3 years.

Distributed by: Department of Agriculture, ETO 02
Regional Agricultural Engineering Group
Corn Soil Fertility Group
© Copy Right Reserved 2016-2017