

18 240342 18 206291 18 172240 18 138189 121 648460 121 693096

DEPARTMENT OF AGRICULTURE
 1968

NITROGEN MAP
 Corn Riverflood Area
 Municipality of Lal-Lo
 Province of Cagayan

Prepared by:
 JOUIS D. SUWICAO
 RENIE B. LUTYAL
 BAGANI S. CABALIS
 ELEGAN GABRIELA GASILLO
 SALLY JANE T. SALBUENA

Reviewed by:
 ANGELINA S. CALUSADAN
 Agricultural III
 RESILINDA S. SAWALIA
 Chief, NARS
 VICENTE L. MUEL
 Asst. Com. Coordinator

QUILANDE J. LORENZANA
 Regional Technical Director
 LUCRECIO S. ALVARADO, CESO III
 Regional Executive Director

REGIONAL UNIVERSITY CENTER
 DA TE ACCREDITED
 AUGUST 1, 2015

DAWG 2015, 1968
 Map Source: Google Earth, 16, 03-147
 © 2015, 2008, 2006
 © 2015, 2008, 2006
 © 2015, 2008, 2006

The Faculty Map was produced under the collaborative effort of the Faculty of Agriculture, Regional University Center, and the Local Government Unit, CY 2015. No derivative work is allowed without the permission of the Faculty of Agriculture, Regional University Center, and the Local Government Unit, Cagayan.

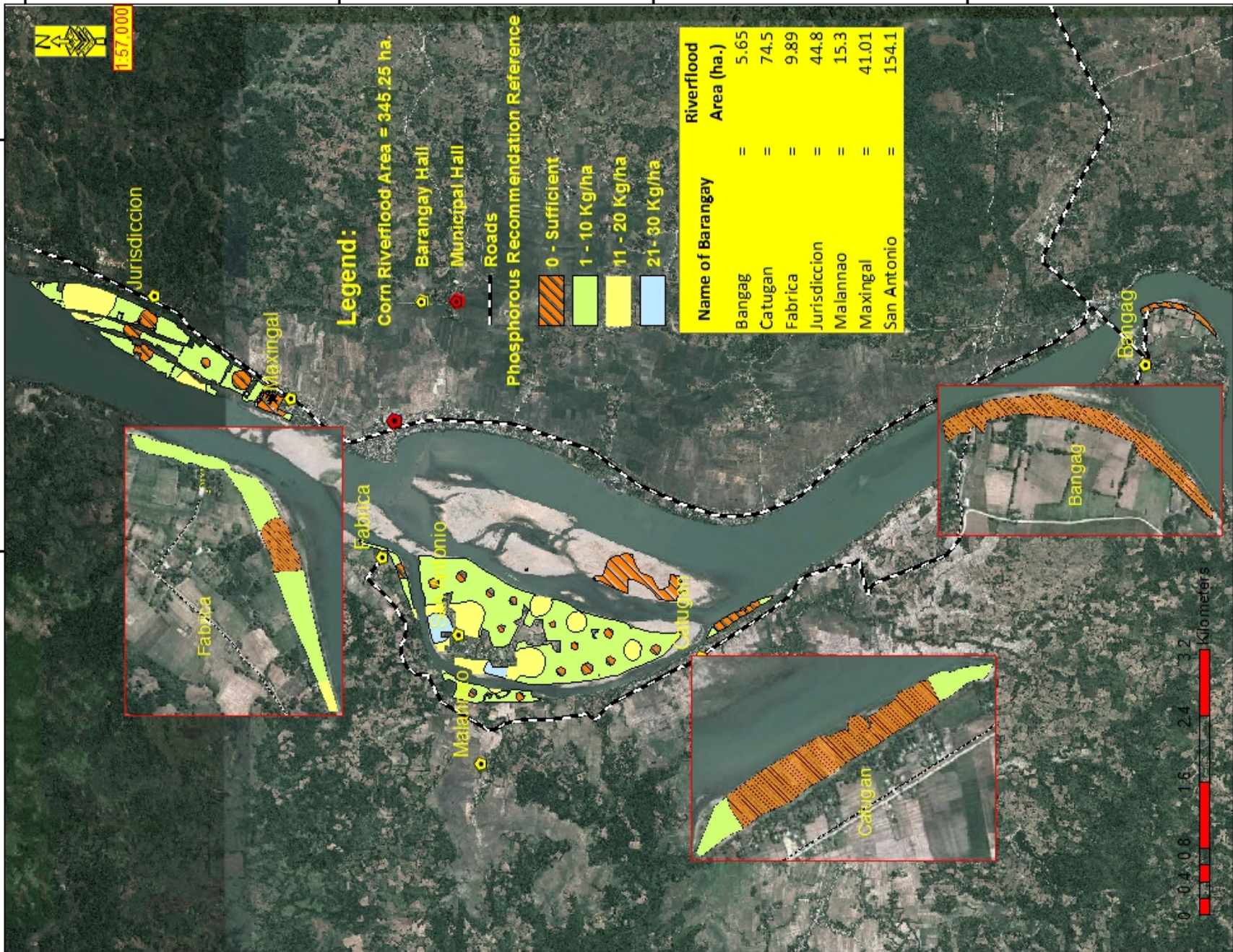
The Department of Agriculture, Regional Office No. 02, Cagayan, has the sole responsibility to inform the DA-RO 02, Regional Office No. 02, Regional Agricultural Engineering Group and the Local Government Unit, CY 2015.

DAWG 2015, 1968
 No derivative work is allowed without the permission of the Faculty of Agriculture, Regional University Center, and the Local Government Unit, Cagayan.

Faculty Recommendation Reference: RA 670 for 3 years
 Distributed by: Department of Agriculture, RO 02
 Regional Agricultural Engineering Group
 Central Faculty Group
 © Copy Right Reserved

121 648460 121 693096

121.648460 18.240342 121.693096 18.206291 18.172240 18.138189 121.648460 18.240342



DEPARTMENT OF AGRICULTURE
1988

PHO SPHOROUS MAP
Corn Riverflood Area
Municipality of Lal-Lo
Province of Cagayan

Prepared by:
JOSIE D. SUWICAO
RENIE B. LUTIEL
BAGANI S. CABALIS
ELSAGAN GABRIELA GASILLO

Reviewed by:
ANGELINA S. CALUSADUS
Regional Executive Director
REYESILDE S. SAWALIA
Chief, RA-2C
VICENTE L. MUEL
Asst. Com. Coordinator

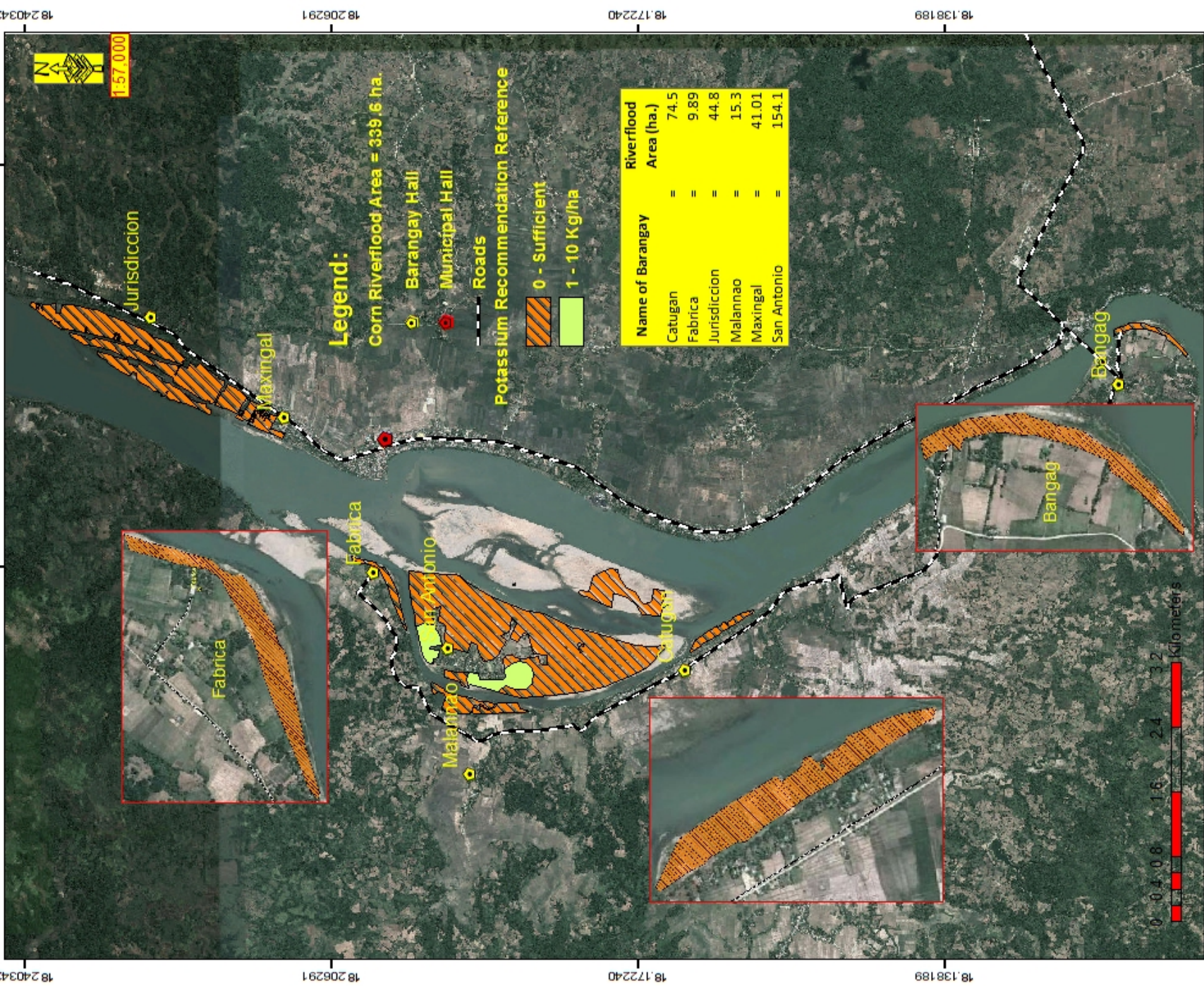
QUILANDE J. LORENZANA
Regional Technical Director

LUCRECIO S. ALVARADO, JR., CESO III
Regional Executive Director

DATE ACCOMPLISHED:
AUGUST 1, 2015

Scale: 1:57,000
Map Source: Google Earth, 18.0.50147
© 2015, 2014, 2013, 2012, 2011, 2010, 2009, 2008, 2007, 2006, 2005, 2004, 2003, 2002, 2001, 2000, 1999, 1998, 1997, 1996, 1995, 1994, 1993, 1992, 1991, 1990, 1989, 1988, 1987, 1986, 1985, 1984, 1983, 1982, 1981, 1980, 1979, 1978, 1977, 1976, 1975, 1974, 1973, 1972, 1971, 1970, 1969, 1968, 1967, 1966, 1965, 1964, 1963, 1962, 1961, 1960, 1959, 1958, 1957, 1956, 1955, 1954, 1953, 1952, 1951, 1950, 1949, 1948, 1947, 1946, 1945, 1944, 1943, 1942, 1941, 1940, 1939, 1938, 1937, 1936, 1935, 1934, 1933, 1932, 1931, 1930, 1929, 1928, 1927, 1926, 1925, 1924, 1923, 1922, 1921, 1920, 1919, 1918, 1917, 1916, 1915, 1914, 1913, 1912, 1911, 1910, 1909, 1908, 1907, 1906, 1905, 1904, 1903, 1902, 1901, 1900, 1899, 1898, 1897, 1896, 1895, 1894, 1893, 1892, 1891, 1890, 1889, 1888, 1887, 1886, 1885, 1884, 1883, 1882, 1881, 1880, 1879, 1878, 1877, 1876, 1875, 1874, 1873, 1872, 1871, 1870, 1869, 1868, 1867, 1866, 1865, 1864, 1863, 1862, 1861, 1860, 1859, 1858, 1857, 1856, 1855, 1854, 1853, 1852, 1851, 1850, 1849, 1848, 1847, 1846, 1845, 1844, 1843, 1842, 1841, 1840, 1839, 1838, 1837, 1836, 1835, 1834, 1833, 1832, 1831, 1830, 1829, 1828, 1827, 1826, 1825, 1824, 1823, 1822, 1821, 1820, 1819, 1818, 1817, 1816, 1815, 1814, 1813, 1812, 1811, 1810, 1809, 1808, 1807, 1806, 1805, 1804, 1803, 1802, 1801, 1800, 1799, 1798, 1797, 1796, 1795, 1794, 1793, 1792, 1791, 1790, 1789, 1788, 1787, 1786, 1785, 1784, 1783, 1782, 1781, 1780, 1779, 1778, 1777, 1776, 1775, 1774, 1773, 1772, 1771, 1770, 1769, 1768, 1767, 1766, 1765, 1764, 1763, 1762, 1761, 1760, 1759, 1758, 1757, 1756, 1755, 1754, 1753, 1752, 1751, 1750, 1749, 1748, 1747, 1746, 1745, 1744, 1743, 1742, 1741, 1740, 1739, 1738, 1737, 1736, 1735, 1734, 1733, 1732, 1731, 1730, 1729, 1728, 1727, 1726, 1725, 1724, 1723, 1722, 1721, 1720, 1719, 1718, 1717, 1716, 1715, 1714, 1713, 1712, 1711, 1710, 1709, 1708, 1707, 1706, 1705, 1704, 1703, 1702, 1701, 1700, 1699, 1698, 1697, 1696, 1695, 1694, 1693, 1692, 1691, 1690, 1689, 1688, 1687, 1686, 1685, 1684, 1683, 1682, 1681, 1680, 1679, 1678, 1677, 1676, 1675, 1674, 1673, 1672, 1671, 1670, 1669, 1668, 1667, 1666, 1665, 1664, 1663, 1662, 1661, 1660, 1659, 1658, 1657, 1656, 1655, 1654, 1653, 1652, 1651, 1650, 1649, 1648, 1647, 1646, 1645, 1644, 1643, 1642, 1641, 1640, 1639, 1638, 1637, 1636, 1635, 1634, 1633, 1632, 1631, 1630, 1629, 1628, 1627, 1626, 1625, 1624, 1623, 1622, 1621, 1620, 1619, 1618, 1617, 1616, 1615, 1614, 1613, 1612, 1611, 1610, 1609, 1608, 1607, 1606, 1605, 1604, 1603, 1602, 1601, 1600, 1599, 1598, 1597, 1596, 1595, 1594, 1593, 1592, 1591, 1590, 1589, 1588, 1587, 1586, 1585, 1584, 1583, 1582, 1581, 1580, 1579, 1578, 1577, 1576, 1575, 1574, 1573, 1572, 1571, 1570, 1569, 1568, 1567, 1566, 1565, 1564, 1563, 1562, 1561, 1560, 1559, 1558, 1557, 1556, 1555, 1554, 1553, 1552, 1551, 1550, 1549, 1548, 1547, 1546, 1545, 1544, 1543, 1542, 1541, 1540, 1539, 1538, 1537, 1536, 1535, 1534, 1533, 1532, 1531, 1530, 1529, 1528, 1527, 1526, 1525, 1524, 1523, 1522, 1521, 1520, 1519, 1518, 1517, 1516, 1515, 1514, 1513, 1512, 1511, 1510, 1509, 1508, 1507, 1506, 1505, 1504, 1503, 1502, 1501, 1500, 1499, 1498, 1497, 1496, 1495, 1494, 1493, 1492, 1491, 1490, 1489, 1488, 1487, 1486, 1485, 1484, 1483, 1482, 1481, 1480, 1479, 1478, 1477, 1476, 1475, 1474, 1473, 1472, 1471, 1470, 1469, 1468, 1467, 1466, 1465, 1464, 1463, 1462, 1461, 1460, 1459, 1458, 1457, 1456, 1455, 1454, 1453, 1452, 1451, 1450, 1449, 1448, 1447, 1446, 1445, 1444, 1443, 1442, 1441, 1440, 1439, 1438, 1437, 1436, 1435, 1434, 1433, 1432, 1431, 1430, 1429, 1428, 1427, 1426, 1425, 1424, 1423, 1422, 1421, 1420, 1419, 1418, 1417, 1416, 1415, 1414, 1413, 1412, 1411, 1410, 1409, 1408, 1407, 1406, 1405, 1404, 1403, 1402, 1401, 1400, 1399, 1398, 1397, 1396, 1395, 1394, 1393, 1392, 1391, 1390, 1389, 1388, 1387, 1386, 1385, 1384, 1383, 1382, 1381, 1380, 1379, 1378, 1377, 1376, 1375, 1374, 1373, 1372, 1371, 1370, 1369, 1368, 1367, 1366, 1365, 1364, 1363, 1362, 1361, 1360, 1359, 1358, 1357, 1356, 1355, 1354, 1353, 1352, 1351, 1350, 1349, 1348, 1347, 1346, 1345, 1344, 1343, 1342, 1341, 1340, 1339, 1338, 1337, 1336, 1335, 1334, 1333, 1332, 1331, 1330, 1329, 1328, 1327, 1326, 1325, 1324, 1323, 1322, 1321, 1320, 1319, 1318, 1317, 1316, 1315, 1314, 1313, 1312, 1311, 1310, 1309, 1308, 1307, 1306, 1305, 1304, 1303, 1302, 1301, 1300, 1299, 1298, 1297, 1296, 1295, 1294, 1293, 1292, 1291, 1290, 1289, 1288, 1287, 1286, 1285, 1284, 1283, 1282, 1281, 1280, 1279, 1278, 1277, 1276, 1275, 1274, 1273, 1272, 1271, 1270, 1269, 1268, 1267, 1266, 1265, 1264, 1263, 1262, 1261, 1260, 1259, 1258, 1257, 1256, 1255, 1254, 1253, 1252, 1251, 1250, 1249, 1248, 1247, 1246, 1245, 1244, 1243, 1242, 1241, 1240, 1239, 1238, 1237, 1236, 1235, 1234, 1233, 1232, 1231, 1230, 1229, 1228, 1227, 1226, 1225, 1224, 1223, 1222, 1221, 1220, 1219, 1218, 1217, 1216, 1215, 1214, 1213, 1212, 1211, 1210, 1209, 1208, 1207, 1206, 1205, 1204, 1203, 1202, 1201, 1200, 1199, 1198, 1197, 1196, 1195, 1194, 1193, 1192, 1191, 1190, 1189, 1188, 1187, 1186, 1185, 1184, 1183, 1182, 1181, 1180, 1179, 1178, 1177, 1176, 1175, 1174, 1173, 1172, 1171, 1170, 1169, 1168, 1167, 1166, 1165, 1164, 1163, 1162, 1161, 1160, 1159, 1158, 1157, 1156, 1155, 1154, 1153, 1152, 1151, 1150, 1149, 1148, 1147, 1146, 1145, 1144, 1143, 1142, 1141, 1140, 1139, 1138, 1137, 1136, 1135, 1134, 1133, 1132, 1131, 1130, 1129, 1128, 1127, 1126, 1125, 1124, 1123, 1122, 1121, 1120, 1119, 1118, 1117, 1116, 1115, 1114, 1113, 1112, 1111, 1110, 1109, 1108, 1107, 1106, 1105, 1104, 1103, 1102, 1101, 1100, 1099, 1098, 1097, 1096, 1095, 1094, 1093, 1092, 1091, 1090, 1089, 1088, 1087, 1086, 1085, 1084, 1083, 1082, 1081, 1080, 1079, 1078, 1077, 1076, 1075, 1074, 1073, 1072, 1071, 1070, 1069, 1068, 1067, 1066, 1065, 1064, 1063, 1062, 1061, 1060, 1059, 1058, 1057, 1056, 1055, 1054, 1053, 1052, 1051, 1050, 1049, 1048, 1047, 1046, 1045, 1044, 1043, 1042, 1041, 1040, 1039, 1038, 1037, 1036, 1035, 1034, 1033, 1032, 1031, 1030, 1029, 1028, 1027, 1026, 1025, 1024, 1023, 1022, 1021, 1020, 1019, 1018, 1017, 1016, 1015, 1014, 1013, 1012, 1011, 1010, 1009, 1008, 1007, 1006, 1005, 1004, 1003, 1002, 1001, 1000, 999, 998, 997, 996, 995, 994, 993, 992, 991, 990, 989, 988, 987, 986, 985, 984, 983, 982, 981, 980, 979, 978, 977, 976, 975, 974, 973, 972, 971, 970, 969, 968, 967, 966, 965, 964, 963, 962, 961, 960, 959, 958, 957, 956, 955, 954, 953, 952, 951, 950, 949, 948, 947, 946, 945, 944, 943, 942, 941, 940, 939, 938, 937, 936, 935, 934, 933, 932, 931, 930, 929, 928, 927, 926, 925, 924, 923, 922, 921, 920, 919, 918, 917, 916, 915, 914, 913, 912, 911, 910, 909, 908, 907, 906, 905, 904, 903, 902, 901, 900, 899, 898, 897, 896, 895, 894, 893, 892, 891, 890, 889, 888, 887, 886, 885, 884, 883, 882, 881, 880, 879, 878, 877, 876, 875, 874, 873, 872, 871, 870, 869, 868, 867, 866, 865, 864, 863, 862, 861, 860, 859, 858, 857, 856, 855, 854, 853, 852, 851, 850, 849, 848, 847, 846, 845, 844, 843, 842, 841, 840, 839, 838, 837, 836, 835, 834, 833, 832, 831, 830, 829, 828, 827, 826, 825, 824, 823, 822, 821, 820, 819, 818, 817, 816, 815, 814, 813, 812, 811, 810, 809, 808, 807, 806, 805, 804, 803, 802, 801, 800, 799, 798, 797, 796, 795, 794, 793, 792, 791, 790, 789, 788, 787, 786, 785, 784, 783, 782, 781, 780, 779, 778, 777, 776, 775, 774, 773, 772, 771, 770, 769, 768, 767, 766, 765, 764, 763, 762, 761, 760, 759, 758, 757, 756, 755, 754, 753, 752, 751, 750, 749, 748, 747, 746, 745, 744, 743, 742, 741, 740, 739, 738, 737, 736, 735, 734, 733, 732, 731, 730, 729, 728, 727, 726, 725, 724, 723, 722, 721, 720, 719, 718, 717, 716, 715, 714, 713, 712, 711, 710, 709, 708, 707, 706, 705, 704, 703, 702, 701, 700, 699, 698, 697, 696, 695, 694, 693, 692, 691, 690, 689, 688, 687, 686, 685, 684, 683, 682, 681, 680, 679, 678, 677, 676, 675, 674, 673, 672, 671, 670, 669, 668, 667, 666, 665, 664, 663, 662, 661, 660, 659, 658, 657, 656, 655, 654, 653, 652, 651, 650, 649, 648, 647, 646, 645, 644, 643, 642, 641, 640, 639, 638, 637, 636, 635, 634, 633, 632, 631, 630, 629, 628, 627, 626, 625, 624, 623, 622, 621, 620, 619, 618, 617, 616, 615, 614, 613, 612, 611, 610, 609, 608, 607, 606, 605, 604, 603, 602, 601, 600, 599, 598, 597, 596, 595, 594, 593, 592, 591, 590, 589, 588, 587, 586, 585, 584, 583, 582, 581, 580, 579, 578, 577, 576, 575, 574, 573, 572, 571, 570, 569, 568, 567, 566, 565, 564, 563, 562, 561, 560, 559, 558, 557, 556, 555, 554, 553, 552, 551, 550, 549, 548, 547, 546, 545, 544, 543, 542, 541, 540, 539, 538, 537, 536, 535, 534, 533, 532, 531, 530, 529, 528, 527, 526, 525, 524, 523, 522, 521, 520, 519, 518, 517, 516, 515, 514, 513, 512, 511, 510, 509, 508, 507, 506, 505, 504, 503, 502, 501, 500, 499, 498, 497, 496, 495, 494, 493, 492, 491, 490, 489, 488, 487, 486, 485, 484, 483, 482, 481, 480, 479, 478, 477, 476, 475, 474, 473, 472, 471, 470, 469, 468, 467, 466, 465, 464, 463, 462, 461, 460, 459, 458, 457, 456, 455, 454, 453, 452, 451, 450, 449, 448, 447, 446, 445, 444, 443, 442, 441, 440, 439, 438, 437, 436, 435, 434, 433, 432, 431, 430, 429, 428, 427, 426, 425, 424, 423, 422, 421, 420, 419, 418, 417, 416, 415, 414, 413, 412, 411, 410, 409, 408, 407, 406, 405, 404, 403, 402, 401, 400, 399, 398, 397, 396, 395, 394, 393, 392, 391, 390, 389, 388, 387, 386, 385, 384, 383, 382, 381, 380, 379, 378, 377, 376, 375, 374, 373, 372, 371, 370, 369, 368, 367, 366, 365, 364, 363, 362, 361, 360, 359, 358, 357, 356, 355, 354, 353, 352, 351, 350, 349, 348, 347, 346, 345, 344, 343, 342, 341, 340, 339, 338, 337, 336, 335, 334, 333, 332, 331, 330, 329, 328, 327, 326, 325, 324, 323, 322, 321, 320, 319, 318, 317, 316, 315, 314, 313, 312, 311, 310, 309, 308, 307, 306, 305, 304, 303, 302, 301, 300, 299, 298, 297, 296, 295, 294, 293, 292, 291, 290, 289, 288, 287, 286, 285, 284, 283, 282, 281, 280, 279, 278, 277, 276, 275, 274, 273, 272, 271, 270, 269, 268, 267, 266, 265, 264, 263, 262, 261, 260, 259, 258, 257, 256, 255, 254, 253, 252, 251, 250, 249, 248, 247, 246, 245, 244, 243, 242, 241, 240, 239, 238, 237, 236, 235, 234, 233, 232, 231, 230, 229, 228, 227, 226, 225, 224, 223, 222, 221, 220, 219, 218, 217, 216, 215, 214, 213, 212, 211, 210, 209, 208, 207, 206, 205, 204, 203, 202, 201, 200, 199, 198, 197, 196, 195, 194, 193, 192, 191, 190, 189, 188, 187, 186, 185, 184, 183, 182, 181, 180, 179, 178, 177, 176, 175, 174, 173, 172, 171, 170, 169, 168, 167, 166, 165, 164, 163, 162, 161, 160, 159, 158, 157, 156, 155, 154, 153, 152, 151, 150, 149, 148, 147, 146, 145, 144, 143, 142, 141, 140, 139, 138, 137, 136, 135, 134, 133, 132, 131, 130, 129, 128, 127, 126, 125, 124, 123, 122, 121, 120, 119, 118, 117, 116, 115, 114, 113, 112, 111, 110, 109, 108, 107, 106, 105, 104, 103, 102, 101, 100, 99, 98, 97, 96, 95, 94, 93, 92, 91, 90, 89, 88, 87, 86, 85, 84, 83, 82, 81, 80, 79, 78, 77, 76, 75, 74, 73, 72, 71, 70, 69, 68, 67, 66, 65, 64, 63, 62, 61, 60, 59, 58, 57, 56, 55, 54, 53, 52, 51, 50, 49, 48, 47, 46, 45, 44, 43, 42, 41, 40, 39, 38, 37, 36, 35, 34, 33, 32, 31, 30, 29, 28, 27, 26, 25, 24, 23, 22, 21, 20, 19, 18, 17, 16, 15, 14, 13, 12, 11, 10, 9, 8, 7, 6, 5, 4, 3, 2, 1, 0

121.648460 18.240342 121.693096 18.240342



Legend:
Corn Riverflood Area = 339.6 ha.

Potassium Recommendation Reference

0 - Sufficient
1 - 10 Kg/ha

Name of Barangay	Riverflood Area (ha.)
Catugan	= 74.5
Fabrica	= 9.89
Jurisdicción	= 44.8
Malannao	= 15.3
Maxingal	= 41.01
San Antonio	= 154.1

DEPARTMENT OF AGRICULTURE
1988

POTASSIUM MAP
Corn Riverflood Area
Municipality of Lal-Lo
Province of Cagayan

Prepared by:

JOSUE D. SUWICAO
RIZNE B. LUTYAL
BAGANI S. CABALIS
ELEAGAN GABRIELA G. CASILLO
SALLY JANE T. SALBUENA

Reviewed by:

ANGELINA B. CALUSADAN
Regional III
RESILINDA S. SAWALHA
Chief, RA-3C
VICENTE L. MIGUEL
Asst. Com. Coordinator

Approved by:

QUILANDE J. LORENZANA
Regional Technical Director
LUCRECIO S. ALVARADO, CESO III
Regional Executive Director

DATE APPROVED: AUGUST 1, 2015

Source: DGS, 1988
Map Scale: Google Earth, 18.05147
© 2015, Google LLC
© 2015, Maxx Air, Inc.
© 2015, Google LLC

The Faculty Map was produced under the collaborative effort of the Regional Office III, Regional Agricultural Engineering Group and the Local Government Unit, CY 2015.
Scale drawing not considered authoritative.
The Department of Agriculture, Regional Office III, does not assume any liability for any consequences arising from the use of the information presented in this Corn Riverflood Area Potassium Recommendation Reference. It is for information only.
Approved by: Department of Agriculture, Regional Office III, Regional Agricultural Engineering Group
© Copy Right Reserved.

