

121.686924

121.704232

121.721540

121.738848

121.756156

17.795942

17.795942

17.771731

17.771731

17.747520

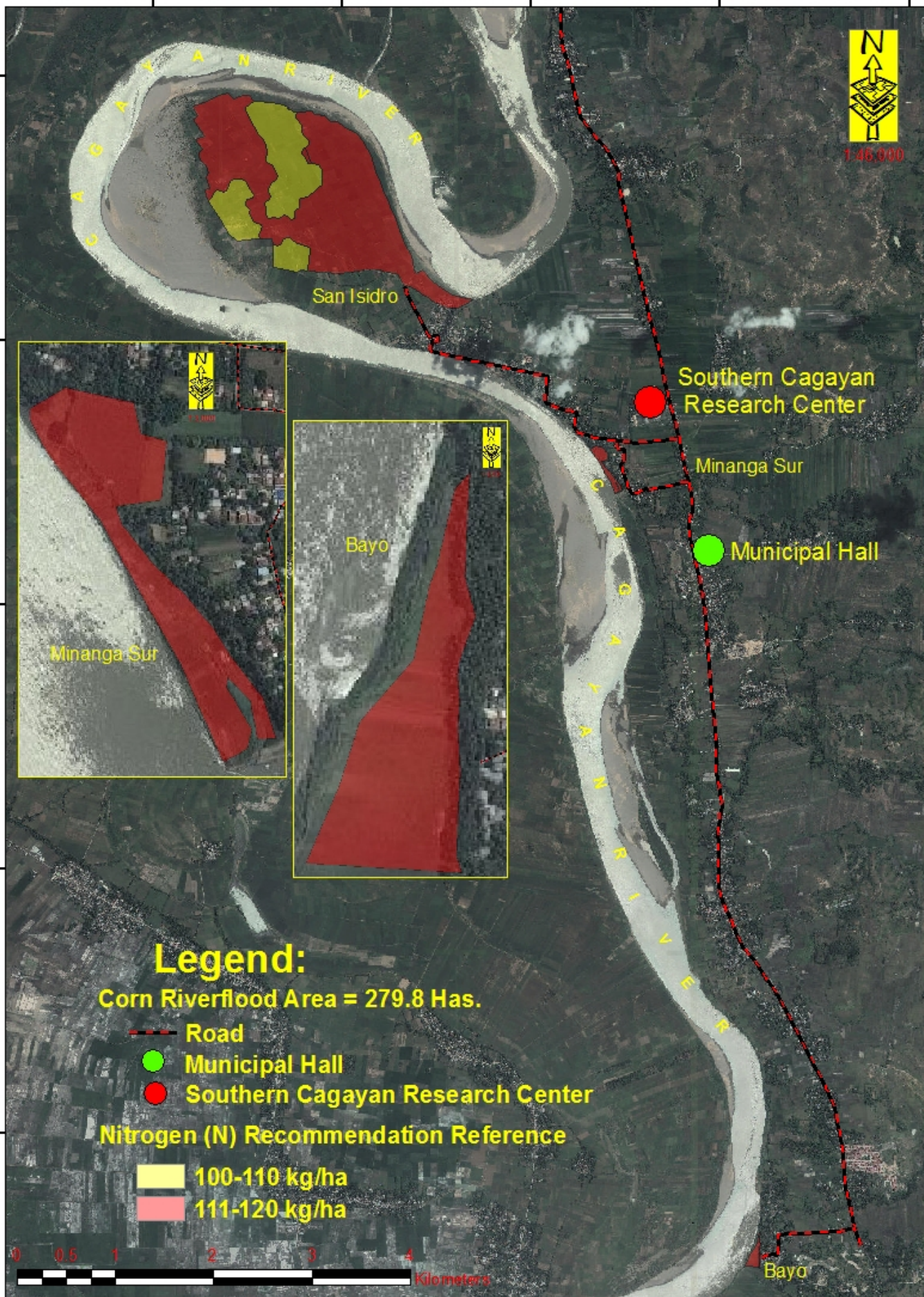
17.747520

17.723309

17.723309

17.699098

17.699098





Legend:

Corn Riverflood Area = 279.8 Has.

-  Road
-  Municipal Hall
-  Southern Cagayan Research Center

Nitrogen (N) Recommendation Reference

-  100-110 kg/ha
-  111-120 kg/ha



N Map

Corn Riverflood Area
Municipality of Iguig
Province of Cagayan

Prepared by:
JOANA ROSE R. ROQUE
BEVERLY ANNE D. TAMAYAO
ELEAZAR GABRIEL A. CASTILLO

LORDAN P. LENTINO
JOUIE D. SUMIGAD
SALLY JANE P. BALBUENA

ISAGANI S. CABALSI
JOEY A. CALUAGA

Reviewed by:
ANGELITA B. CALUBAQUIB
Agriculturist II
GENEROSO M. OLI
Engineer III
RESTITUTO E. SAMATRA
Chief, RAEG

NENITA M. YABIS
Agri II / ARCC
ORLANDO J. LORENZANA
Regional Technical Director
LUCRECIO R. ALVIA, JR., CESO III
Regional Executive Director

DATE ACCOMPISHED:
JULY 2014

121.686924

121.704232

121.721540

121.738848

121.756156

17.795942

17.795942

17.771731

17.771731

17.747520

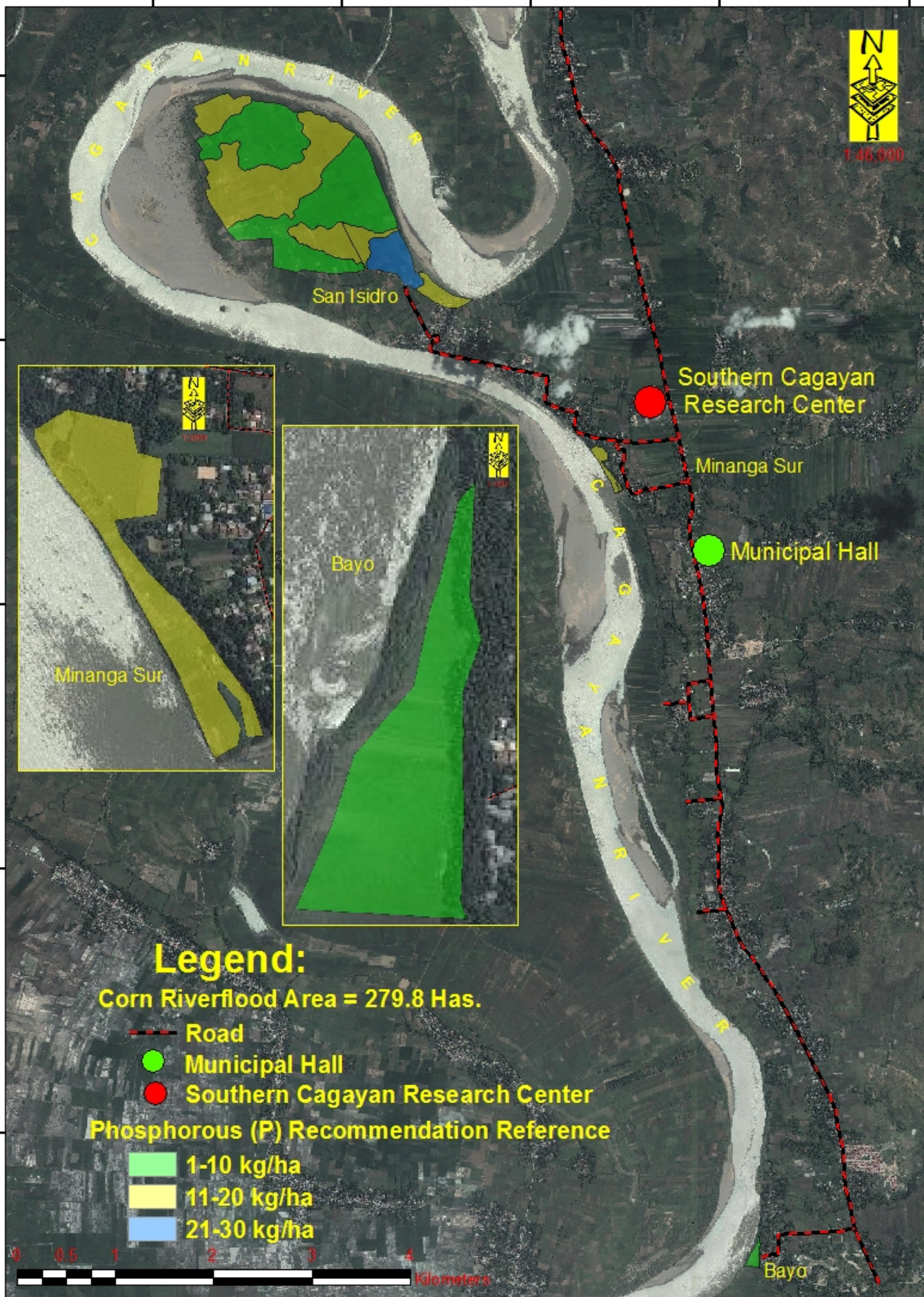
17.747520

17.723309

17.723309

17.699098

17.699098



Legend:

Corn Riverflood Area = 279.8 Has.

- Road
- Municipal Hall
- Southern Cagayan Research Center

Phosphorous (P) Recommendation Reference

- 1-10 kg/ha
- 11-20 kg/ha
- 21-30 kg/ha



121.686924

121.704232

121.721540

121.738848

121.756156



P Map

Corn Riverflood Area Municipality of Igui Province of Cagayan

Prepared by:
JOANA ROSE R. ROQUE
BEVERLY ANNE D. TAMAYAO
ELEAZAR GABRIEL A. CASTILLO

LORDAN P. LENTINO
JOUIE D. SUMIGAD
SALLY JANE P. BALBUENA

ISAGANI S. CABALSI
JOEY A. CALUAGA

Reviewed by:
ANGELITA B. CALUBAQUIB
 Agriculturist II
GENEROSO M. OLI
 Engineer III
RESTITUTO E. SAMATRA
 Chief, RAEG

NENITA M. YABIS
 Agri II / ARCC
ORLANDO J. LORENZANA
 Regional Technical Director
LUCRECIO R. ALVIA, JR., CESO III
 Regional Executive Director

DATE ACCOMPISHED:
 JULY 2014

121.686924

121.704232

121.721540

121.738848

121.756156

17.795942

17.795942

17.771731

17.771731

17.747520

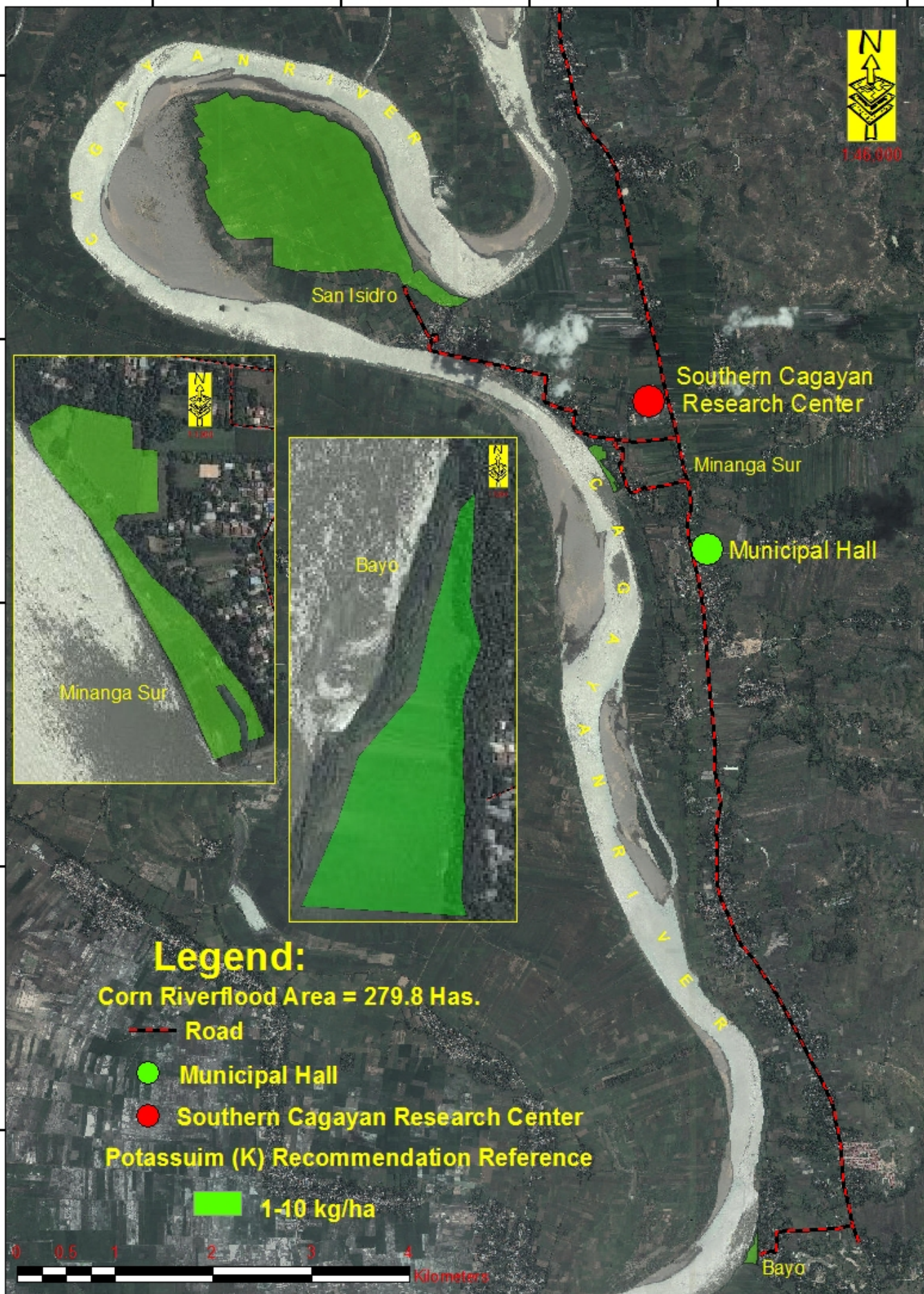
17.747520

17.723309

17.723309

17.699098

17.699098



Legend:

Corn Riverflood Area = 279.8 Has.

—●— Road

● Municipal Hall

● Southern Cagayan Research Center

Potassium (K) Recommendation Reference

■ 1-10 kg/ha



121.686924

121.704232

121.721540

121.738848

121.756156



K Map

Corn Riverflood Area
Municipality of Igui
Province of Cagayan

Prepared by:
 JOANA ROSE R. ROQUE
 BEVERLY ANNE D. TAMAYAO
 ELEAZAR GABRIEL A. CASTILLO

LORDAN P. LENTINO
 JOUIE D. SUMIGAD
 SALLY JANE P. BALBUENA

ISAGANI S. CABALSI
 JOEY A. CALUAGA

Reviewed by:
 ANGELITA B. CALUBAQUIB
 Agriculturist II
 GENEROSO M. OLI
 Engineer III
 RESTITUTO E. SAMATRA
 Chief, RAEG

NENITA M. YABIS
 Agri II / ARCC
 ORLANDO J. LORENZANA
 Regional Technical Director
 LUCRECIO R. ALVIA, JR., CESO III
 Regional Executive Director

DATE ACCOMPLISHED:
 JULY 2014

121.686924

121.704232

121.721540

121.738848

121.756156

17.795942

17.795942

17.771731

17.771731

17.747520

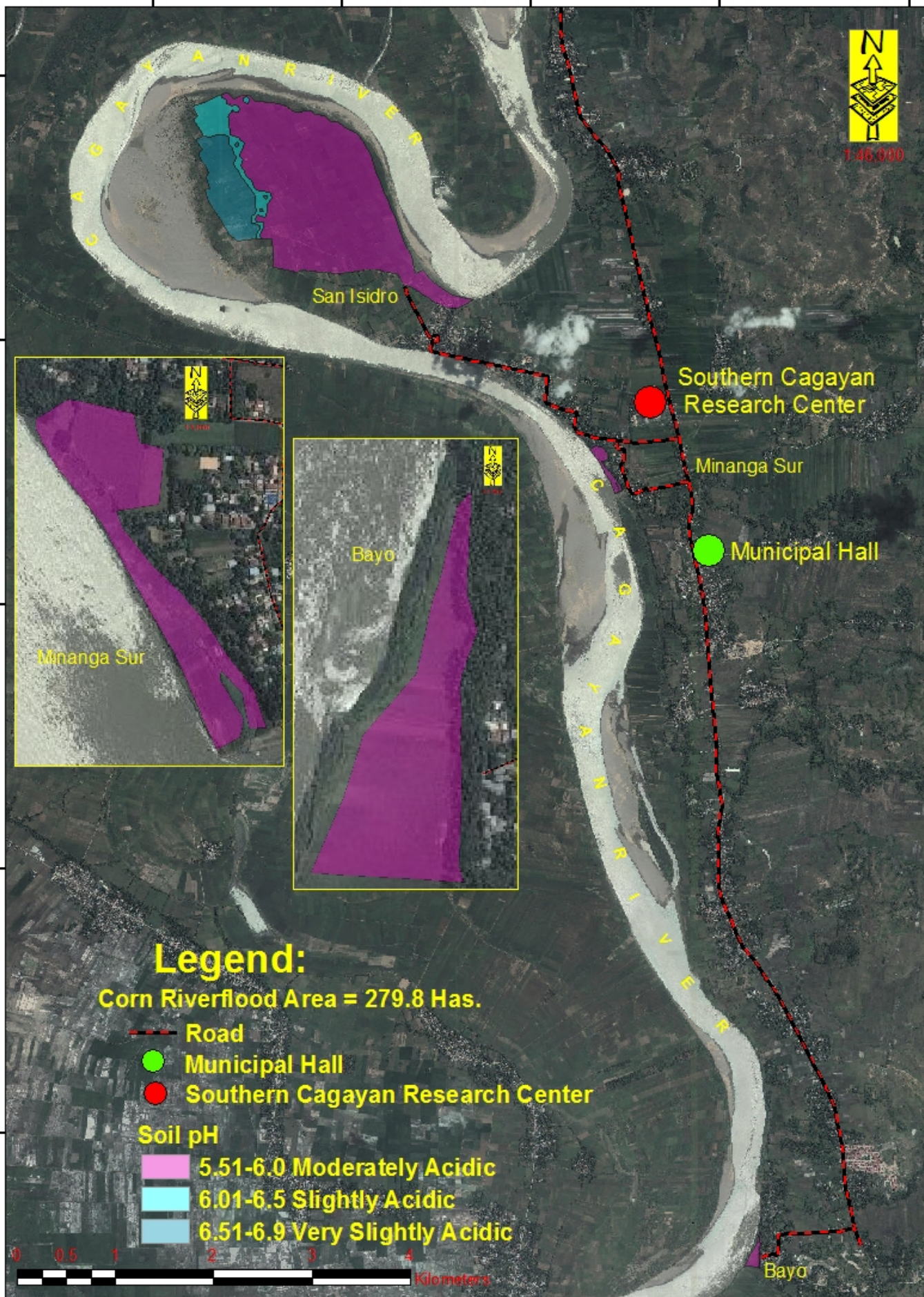
17.747520

17.723309

17.723309

17.699098

17.699098




121.686924

121.704232

121.721540

121.738848

121.756156

 <p>Prepared by: JOANA ROSE R. ROQUE BEVERLY ANNE D. TAMAYAO ELEAZAR GABRIEL A. CASTILLO</p>	<p>pH Map</p>	<p>Corn Riverflood Area Municipality of Igui Province of Cagayan</p>		<p>Reviewed by: ANGELITA B. CALUBAQUIB Agriculturist II</p>	<p>NENITA M. YABIS Agri II / ARCC</p>	<div style="border: 1px solid black; padding: 2px;"> <small> <p>1. This map was prepared by the RAEG, Cagayan Region, under the supervision of the Regional Executive Director, and the assistance of the RAEG staff.</p> <p>2. The RAEG is not responsible for any errors or omissions that may appear in this map.</p> <p>3. The RAEG is not responsible for any damage or loss that may result from the use of this map.</p> <p>4. The RAEG is not responsible for any copyright infringement that may occur in the use of this map.</p> <p>5. The RAEG is not responsible for any other legal action that may be taken against it.</p> </small> </div>
		<p>LORDA N. P. LENTINO JOUIE D. SUMIGAD SALLY JANE P. BALBUENA</p>	<p>ISAGANI S. CABBALSI JOEY A. CALUAGA</p>	<p>GENEROSO M. OLI Engineer III</p>	<p>ORLANDO J. LORENZANA Regional Technical Director</p>	

DATE ACCOMPLISHED: JULY 2014