

DEPARTMENT OF AGRICULTURE
 BUREAU OF AGRICULTURAL EXTENSION

NITROGEN MAP

CORN HILLY AREA
 Municipality of Gattaran
 Province of Cagayan, Philippines

DATE ACCOMPLISHED:
MAY, 2016

Prepared by:

Eleazar Gabriel A. Castillo Isagani S. Cabalsi

Sally Jane P. Balbuena Alister Earl M. Meman

Geze James V. Binuyat Jouié D. Sumigad

Reviewed by:

ANGELITA B. CALUBAQUE RESTITUTO E. SAMATRA
 Science Research Specialist II Chief, RAED

NENITA M. YABIS ORLANDO I. LORENZANA
 Asst. Regional Com Coordinator Regional Technical Director

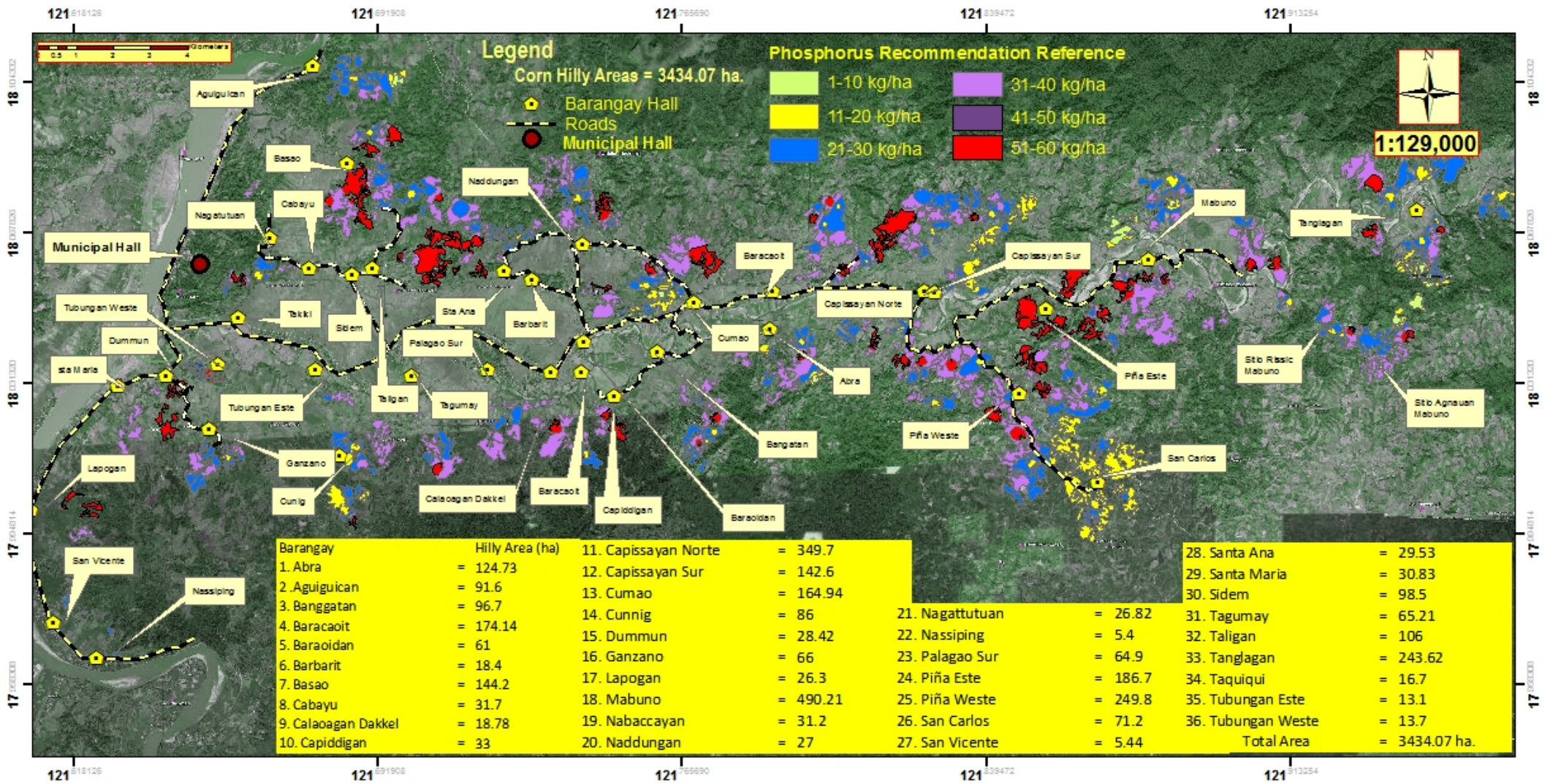
LUCRECIO R. ALVIAR, JR., CESO III
 Regional Executive Director

Date: 05_WDS_094
 Map Source: Google Earth™ 7.6.0.13397
 © 2010 000000 © 2013 OneMap / Spot Image © 2013 000000

This map was produced under the collaborative undertaking of the Department of Agriculture Regional Field Office No. 02, Regional Agricultural Engineering Group and the Local Government Unit, CY 2016. Boundaries are not considered authoritative.

The Department of Agriculture Regional Field Office No. 02 claims the sole responsibility for any omission / errors of this map. Users are requested to inform the RAED, RAED, San Carlos, Tuguegaon City, Cagayan. Fertilizer Recommendation Reference: RAED No. 02-001

Maintained by: Department of Agriculture, RFO 02
 Regional Agricultural Engineering Group
 Core Soil Fertility Group
 © Copy Right Reserved 2016-2017



Phosphorous MAP

CORN HILLY AREA
 Municipality of Gattaran
 Province of Cagayan, Philippines

DATE ACCOMPLISHED:
 MAY, 2016

Prepared by:

- Eleazar Gabriel A. Castillo
- Sally Jane P. Balbuena
- Geze James V. Binuyat
- Isagani S. Cabalsi
- Alister Earl M. Meman
- Jouie D. Sumigad

Reviewed by:

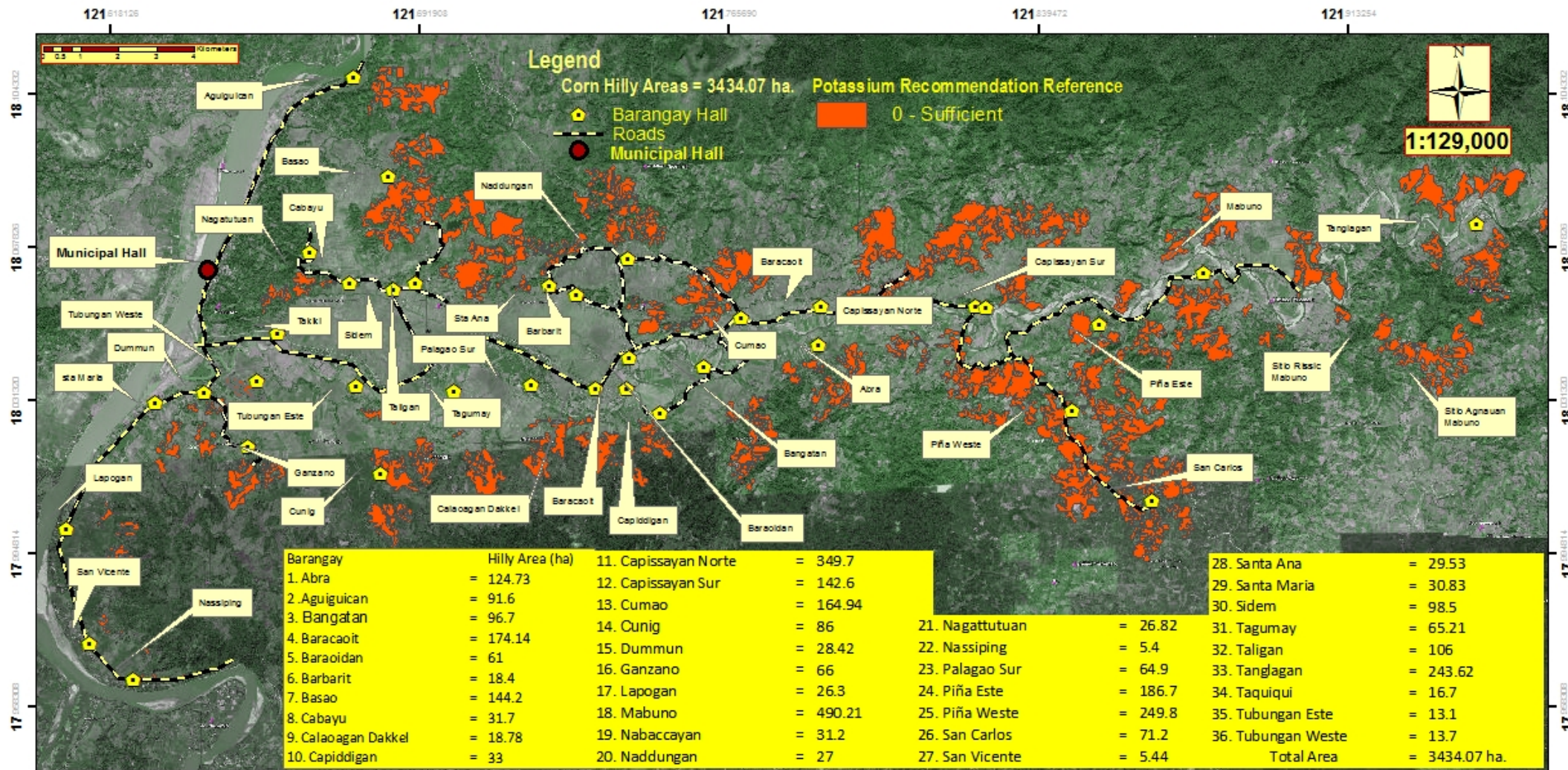
- ANGELITA B. CALUBAQUIE
Science Research Specialist II
- NENITA M. YABIS
Asst. Regional Corn Coordinator
- LUCRECIO R. ALVIAR, JR. CESO III
Regional Executive Director
- RESTITUTO E. SAMATRA
Chief, RAED
- ORLANDO J. LORENZANA
Regional Technical Director

Source: OCS_WIS_H64
 Map Source: Google Earth™ 7.6.0.2.3191
 © 2010 GOOGLE LLC © 2012 Intel / Spot Image © 2013 GOOGLE LLC

This ph. Map was produced under the collaborative undertaking of the Department of Agriculture Regional Field Office No. 02, Regional Agricultural Engineering Group and the Local Government Unit, CY 2016. Boundaries are not considered authoritative.

The Department of Agriculture Regional Field Office No. 02 claims the sole responsibility for any omission / errors of this map. Users are requested to inform the RA-RFO OS, RAED, San Gabriel, Tuguegao City, Cagayan. Fertilizer Recommendation Reference: Reliable for 3 years

Monitored by: Department of Agriculture, RFO 02
 Regional Agricultural Engineering Group
 Corn Soil Fertility Group
 © Copy Right: Reserved 2016-2017



Potassium MAP

CORN HILLY AREA

Municipality of Gattaran
Province of Cagayan, Philippines

DATE ACCOMPLISHED:
MAY, 2016

Prepared by:

Eleazar Gabriel A. Castillo Isagani S. Cabalsi

Sally Jane P. Balbuena Alister Earl M. Meman

Geze James V. Binuyat Jouié D. Sumigad

Reviewed by:

ANGELITA B. CALUBAQUIE RESITUTO E. SAMATRA
Science Research Specialist II Chief, RAED

NENITA M. YABIS ORLANDO J. LORENZANA
Asst. Regional Com Coordinator Regional Technical Director

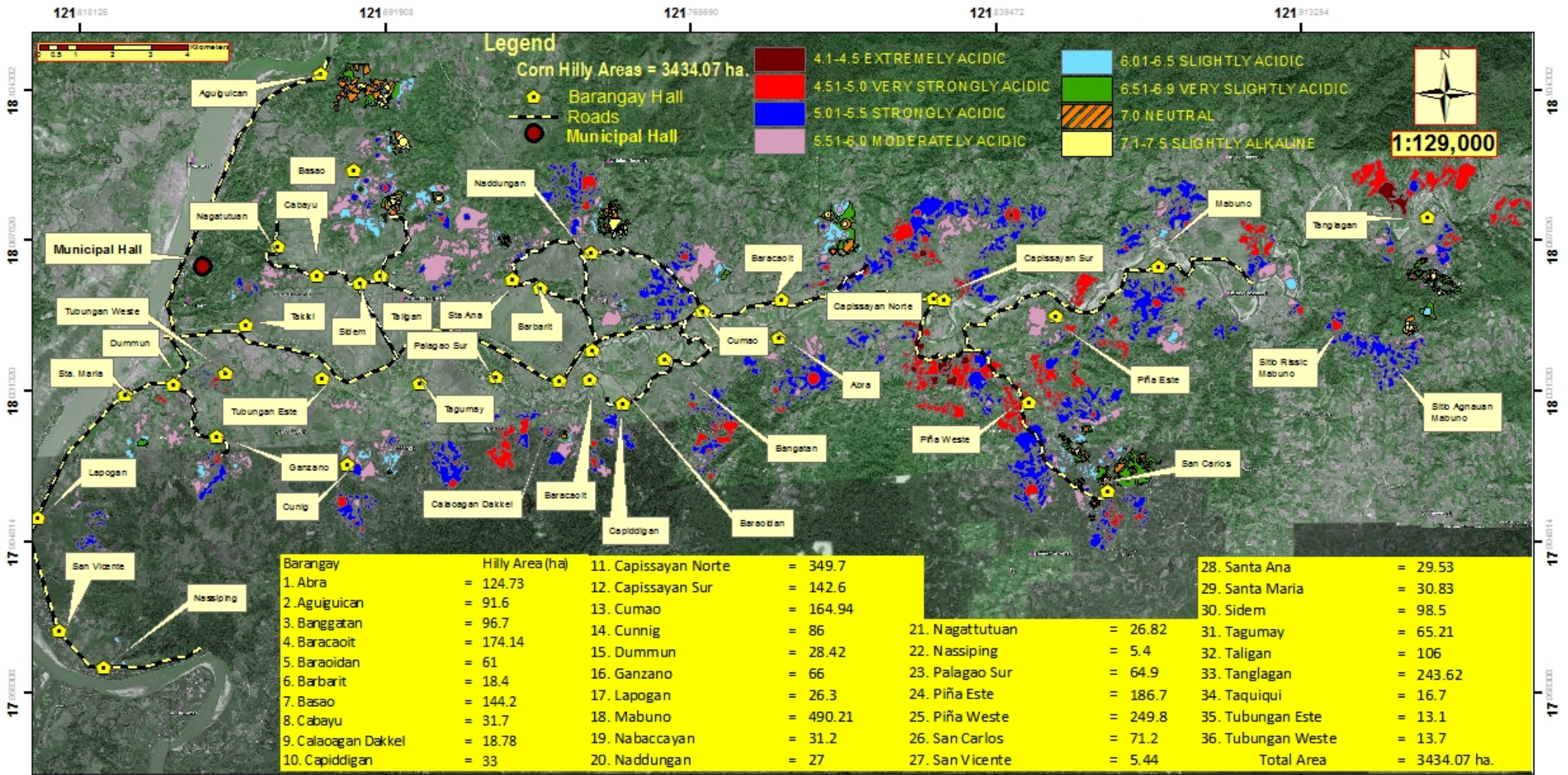
LUCRECIO R. ALVIAR, JR., CESO III
Regional Executive Director

Version: 005_W05_H04
 Map Source: Google Earth™ 7.6.0.3387
 © 2015 000 015 © 2013 Cesa / Spot Image © 2013 00 0015

This Map was produced under the collaborative undertaking of the Department of Agriculture Regional Field Office No. 03, Regional Agricultural Engineering Group and the Local Government Unit, CY 2016. Boundaries are not considered authoritative.

The Department of Agriculture Regional Field Office No. 03 claims the sole responsibility for any omission / errors of this map. Users are requested to inform the RAED, RAEG, San Gabriel, Tuguegao City, Cagayan. Fertilizer Recommendation Reference: Valid for 3 years

Sponsored by: Department of Agriculture, RFO 03
 Regional Agricultural Engineering Group
 Corn Soil Fertility Group
 © Copy Right Reserved 2016-2017



pH MAP

CORN HILLY AREA

Municipality of Gattaran
Province of Cagayan, Philippines

DATE ACCOMPLISHED:
MAY, 2016

Prepared by:

Eleazar Gabriel A. Castillo Isagani S. Cabalsi
Sally Jane P. Balbuena Alister Earl M. Meman
Geze James V. Binuyat Jouié D. Sumigad

Reviewed by:

ANGELITA E. CALUBAQUE RESITUTO E. SAMATRA
Science Research Specialist II Chief, RAED

NENITA M. YABIS ORLANDO I. LORENZANA
Asst. Regional Corn Coordinator Regional Technical Director

LUCRECIO R. ALVIAR, JR., CESO III
Regional Executive Director

Source: DCS_WGS_1984
Map Source: Google Earth™ V6.0.2.2191
© 2010 0000LS © 2013 Ches / Spot Image © 2013 0000LS

This pH Map was produced under the collaborative undertaking of the Department of Agriculture Regional Field Office No. 02, Regional Agricultural Engineering Group and the Local Government Unit, CY 2016. Boundaries are not conditional authoritative.

The Department of Agriculture Regional Field Office No. 02 claims the sole responsibility by any omission / errors of this map. Users are requested to inform the RA-RFO 02, RAED, San Gabriel, Pangasinan City, Cagayan. Retitler Recommendation Reference: Reliable for 3 years.

Map Drawn by: Department of Agriculture, RFO 02
Regional Agricultural Engineering Group
Corn Soil Fertility Group
© Copy Right Reserved 2016-2017