

**LEGEND**

🏠 Municipal/Barangay Hall

--- Roads

Com Riverflood Area = 827.72 ha

**Nitrogen Recommendation Reference**

- 111 - 120 kg/ha
- 121 - 130 kg/ha
- 131 - 140 kg/ha

**NITROGEN MAP**  
Corn Riverflood Area  
Municipality of Gattaran  
Province of Cagayan

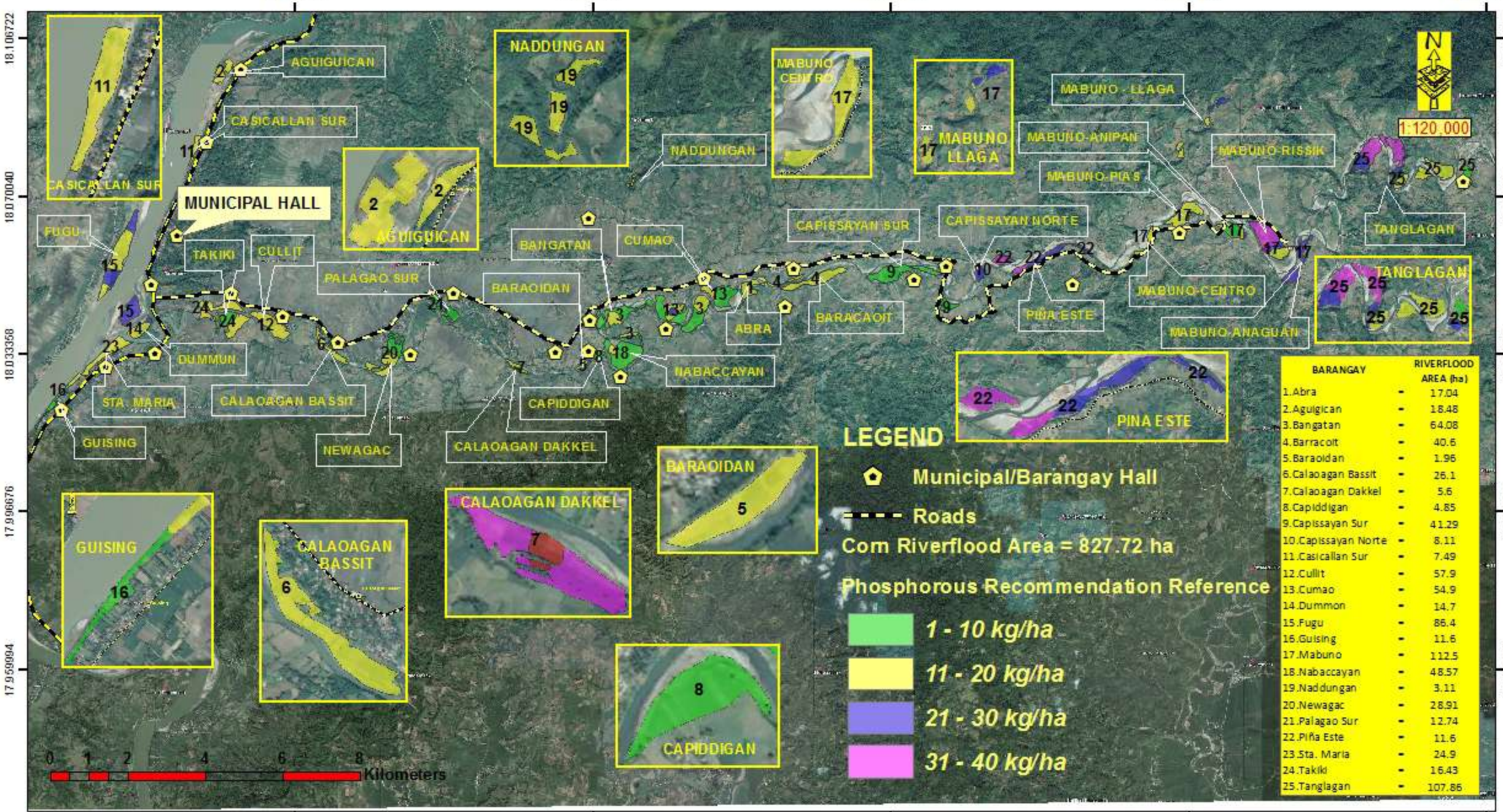
Prepared by:  
IRENE B. TUPPIL      JOUIE D. SUMIGAD  
ISAGANI S. CABALSI      SALLY JANE P. BALBUENA  
ELEAZAR GABRIELA CA STILLO

Reviewed by:  
ANGELITA B. CALUBAQUIB  
Science Research Specialist II  
RESTITUTO E. SAMATRA  
Chief, RAEG  
VICENTE I. MIGUEL  
Assistant Regional Corn Coordinator

ORLANDO J. LORENZANA  
Regional Technical Director  
LUCRECIO R. ALVIA, JR., CESO III  
Regional Executive Director



**Disclaimer: 031. 093. 1000**  
This map was prepared under the collaboration of the Department of Agriculture, Philippine Rice Research Institute, and the Provincial Office of Agriculture, Gattaran, Cagayan. It is not intended for use in any other context. The Department of Agriculture, Philippine Rice Research Institute, and the Provincial Office of Agriculture, Gattaran, Cagayan, are not responsible for any errors or omissions in this map. The map is provided as a reference only and should not be used for any other purpose. For more information, please contact the Regional Office of the Department of Agriculture, Gattaran, Cagayan.



121.673372 121.742616 121.811860 121.881104 121.950348



# PHOSPHOROUS MAP

Corn Riverflood Area  
Municipality of Gattaran  
Province of Cagayan

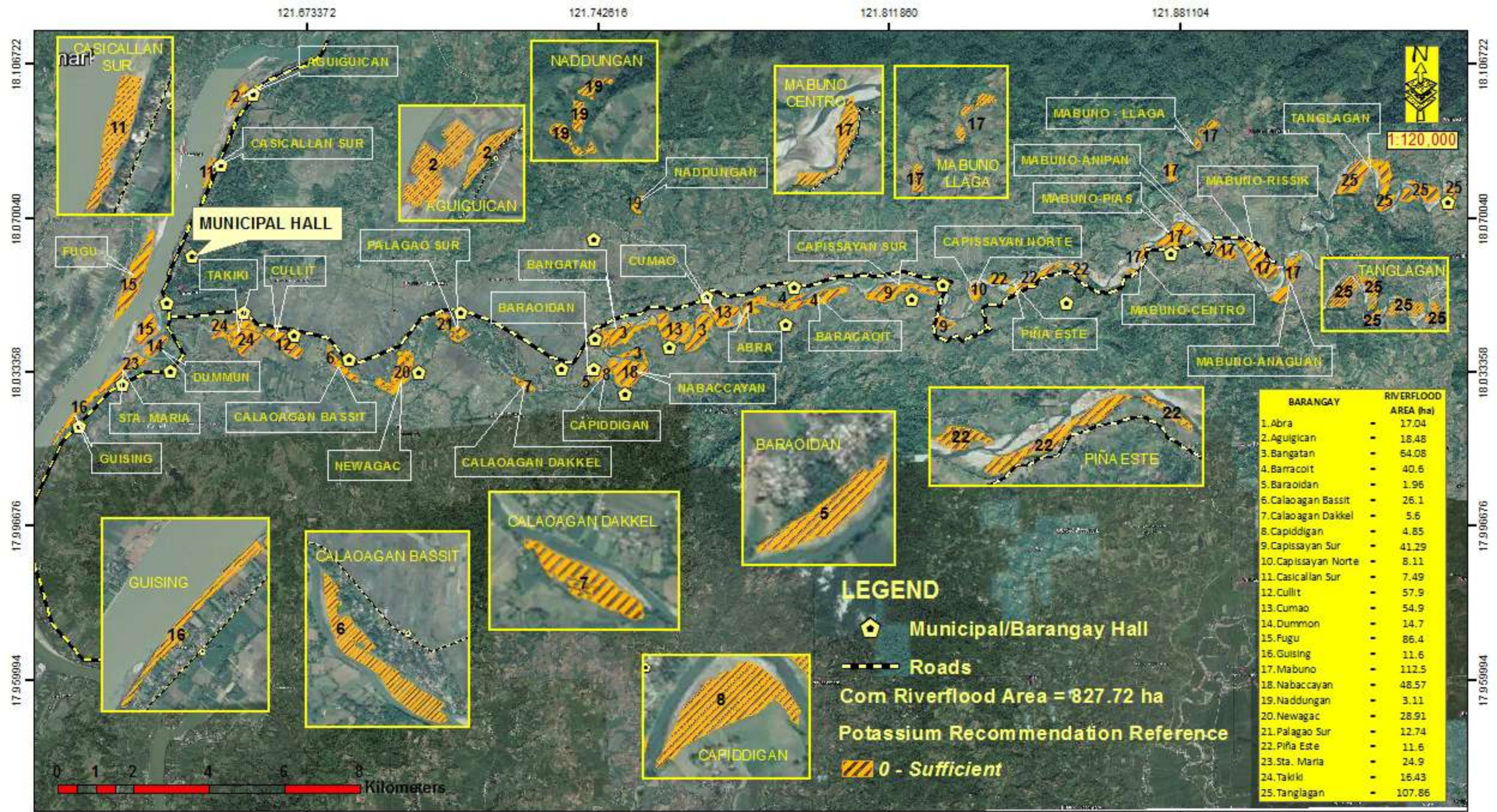
Prepared by:  
 IRENE B. TUPPIL  
 JOUIE D. SUMIGAD  
 ISAGANI S. CABALSI  
 SALLY JANE P. BALBUENA  
 ELEAZAR GABRIELA. CASTILLO

Reviewed by:  
 ANGELITA B. CALUBAQUIB  
 Science Research Specialist II  
 RESTITUTO E. SAMATRA  
 Chief, RAEG  
 VICENTE I. MIGUEL  
 Assistant Regional Corn Coordinator

ORLANDO J. LORENZANA  
 Regional Technical Director  
 LUCRECIO R. ALVIAR, JR., CESO III  
 Regional Executive Director

DATE APPROVED: AUGUST 2018

**Disclaimer: SOI, WS, 1:50,000**  
 This map was prepared under the collaboration of the Department of Agriculture, Region I, and the Provincial Office of Agriculture, Cagayan. The Department of Agriculture, Region I, and the Provincial Office of Agriculture, Cagayan, are not responsible for any errors or omissions in this map. The Department of Agriculture, Region I, and the Provincial Office of Agriculture, Cagayan, are not responsible for any damages or losses resulting from the use of this map. The Department of Agriculture, Region I, and the Provincial Office of Agriculture, Cagayan, are not responsible for any legal actions or claims arising from the use of this map.



**POTASSIUM MAP**  
 Corn Riverflood Area  
 Municipality of Gattaran  
 Province of Cagayan

Prepared by:  
 IRENE B. TUPPIL      JOUIE D. SUMIGAD  
 ISAGANI S. CABALSI      SALLY JANE P. BALBUENA  
 ELEAZAR GABRIELA. CASTILLO

Reviewed by:  
 ANGELITA B. CALUBAQUIB  
 Science Research Specialist II  
 RESTITUTO E. SAMATRA  
 Chief, RAEG  
 VICENTE I. MIGUEL  
 Assistant Regional Corn Coordinator

ORLANDO J. LORENZANA  
 Regional Technical Director  
 LUCRECIO R. ALVARO, JR., CESO III  
 Regional Executive Director



**Disclaimer: 031, WS 1, 2008**  
 This map was prepared under the collaboration of the Department of Agriculture, Region I, and the Provincial Office of the Department of Agriculture, Cagayan. The Department of Agriculture, Region I, and the Provincial Office of the Department of Agriculture, Cagayan, are not responsible for any errors or omissions in this map. The Department of Agriculture, Region I, and the Provincial Office of the Department of Agriculture, Cagayan, are not responsible for any damages or losses resulting from the use of this map. The Department of Agriculture, Region I, and the Provincial Office of the Department of Agriculture, Cagayan, are not responsible for any legal actions or claims arising from the use of this map. The Department of Agriculture, Region I, and the Provincial Office of the Department of Agriculture, Cagayan, are not responsible for any other matters not mentioned in this disclaimer.

