

**Corn Soil Fertility Map**  
Corn Riverflood Area  
Municipality of Enrile  
Province of Cagayan

Prepared By:

ISAGANI S. CABALSI  
JOEY A. CALUCAG  
JOUIE D. SUMIGAD  
LORDAN P. LENTINO

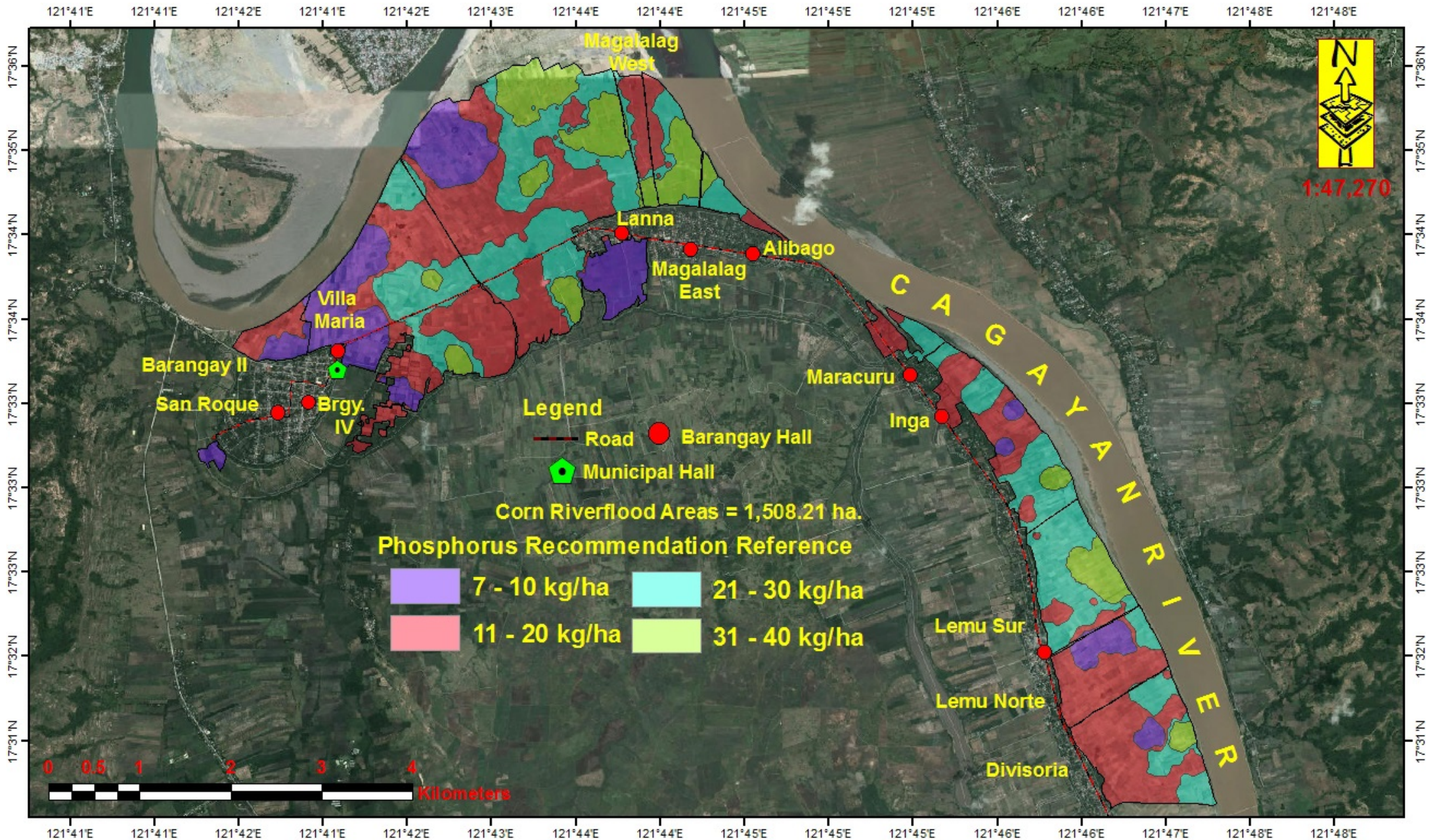
Reviewed By:

ANGELITA B. CALUBAQUIB  
Agriculturist II  
RESTITUTO E. SAMATRA  
Chf. RAEG  
GENEROSO M. OLI  
Engineer III  
LUCRECIO R. ALVIAR, JR., CESO III  
Regional Executive Director

Corn Riverflood Areas = 1506.21 ha  
Barangay IV = 10.5 ha  
Lemu Norte = 112.0 ha  
Lemu Sur = 89.7 ha  
San Roque = 4.71 ha  
Villa Maria = 314.0 ha  
Barangay II = 52.6 ha  
Magalalag West = 63.0 ha  
Magalalag East = 39.4 ha  
Lanna = 527.0 ha  
Alibago = 20.6 ha  
Maracuru = 24.7 ha  
Inga = 127.0 ha  
Divisoria = 143.0 ha



Office: DDA-ENR, 101  
Map Proje...  
Scale: 1:47,270  
Date: June 2014  
This map was prepared under the supervision of the Regional Executive Director, Department of Agriculture, Region I, Cagayan City.  
The Department of Agriculture, Region I, Cagayan City, is not responsible for any errors or omissions in this map.  
DATE ACCOMPLISHED: JUNE, 2014



**Corn Soil Fertility Map**  
 Corn Riverflood Area  
 Municipality of Enrile  
 Province of Cagayan

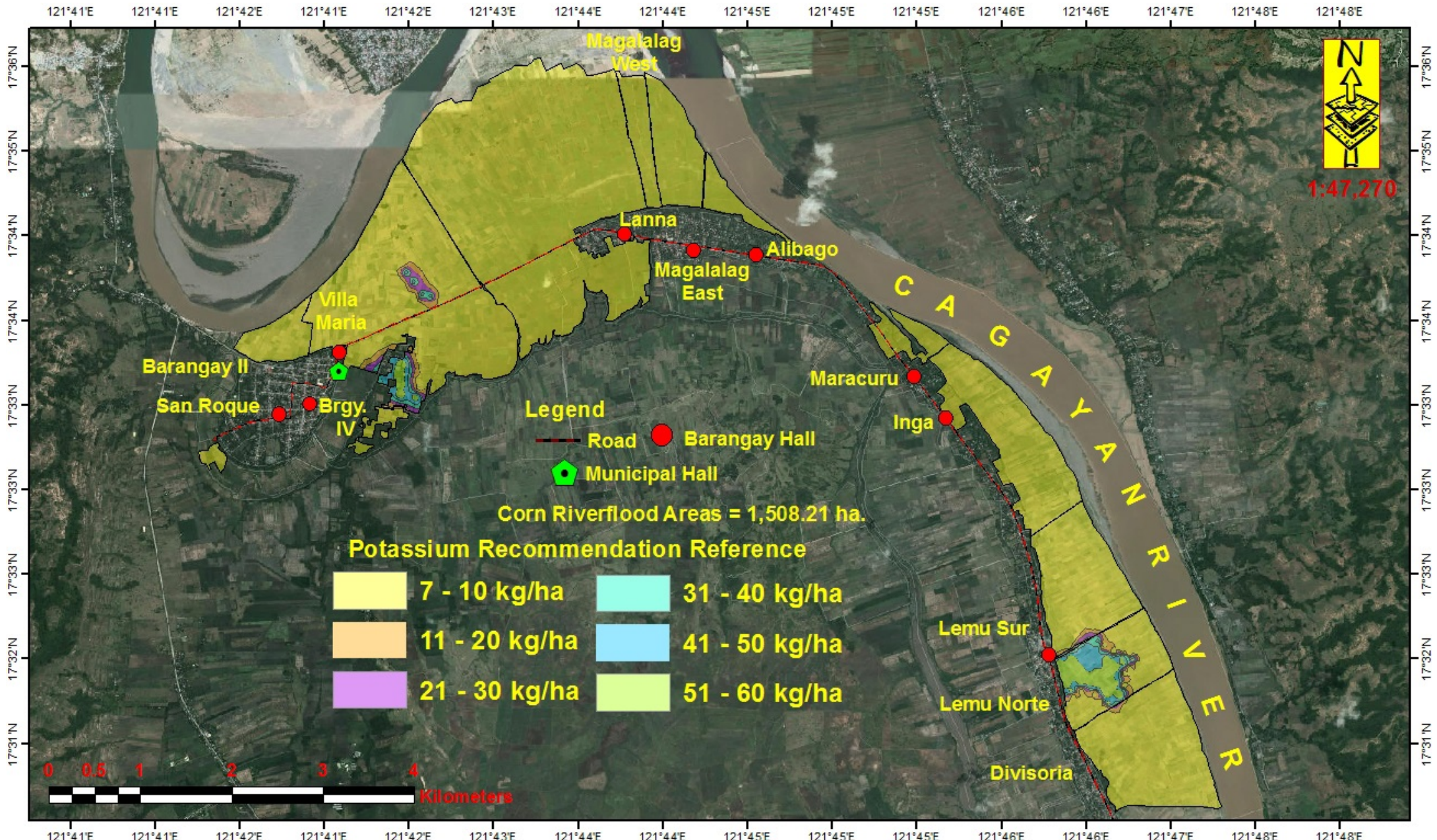
Prepared By:  
 ISAGANI S. CABALSI    JOEY A. CALUCAG  
 JOUIE D. SUMIGAD    LORDAN P. LENTINO

Reviewed By:  
ANGELITA B. CALUBAQUIB    RESTITUTO E. SAMATRA  
 Agriculturist II    Char. RAEG  
GENEROSO M. OLI    LUCRECIO R. ALVIAR, JR., CESO III  
 Engineer III    Regional Executive Director

**Corn Riverflood Areas = 1506.21 ha**  
 Barangay IV = 10.5 ha    Magalalag West = 63.0 ha  
 Lemu Norte = 112.0 ha    Magalalag East = 39.4 ha  
 Lemu Sur = 89.7 ha    Lanna = 527.0 ha  
 San Roque = 4.71 ha    Alibago = 20.6 ha  
 Villa Maria = 314.0 ha    Maracuru = 24.7 ha  
 Barangay II = 52.6 ha    Inga = 127.0 ha  
 Divisoria = 143.0 ha

DATE ACCOMPLISHED: JUNE, 2014

Office: RCR, ENRILE, CAGAYAN  
 Map Projections: UTM  
 Date of Publication: 2014  
 Date of Revision: 2014  
 Prepared by: ISAGANI S. CABALSI, JOEY A. CALUCAG, JOUIE D. SUMIGAD, LORDAN P. LENTINO  
 Checked by: ANGELITA B. CALUBAQUIB, RESTITUTO E. SAMATRA, GENEROSO M. OLI, LUCRECIO R. ALVIAR, JR.  
 Approved by: LUCRECIO R. ALVIAR, JR., Regional Executive Director  
 This map is prepared in accordance with the provisions of the Philippine Surveying Act of 1946 (RA 163) and the Philippine Land Use Act of 1976 (RA 5906).  
 The Department of Agriculture, Philippines  
 Regional Office - Cagayan  
 Office of the Regional Executive Director  
 Cagayan City, Cagayan



**Corn Soil Fertility Map**  
 Corn Riverflood Area  
 Municipality of Enrile  
 Province of Cagayan

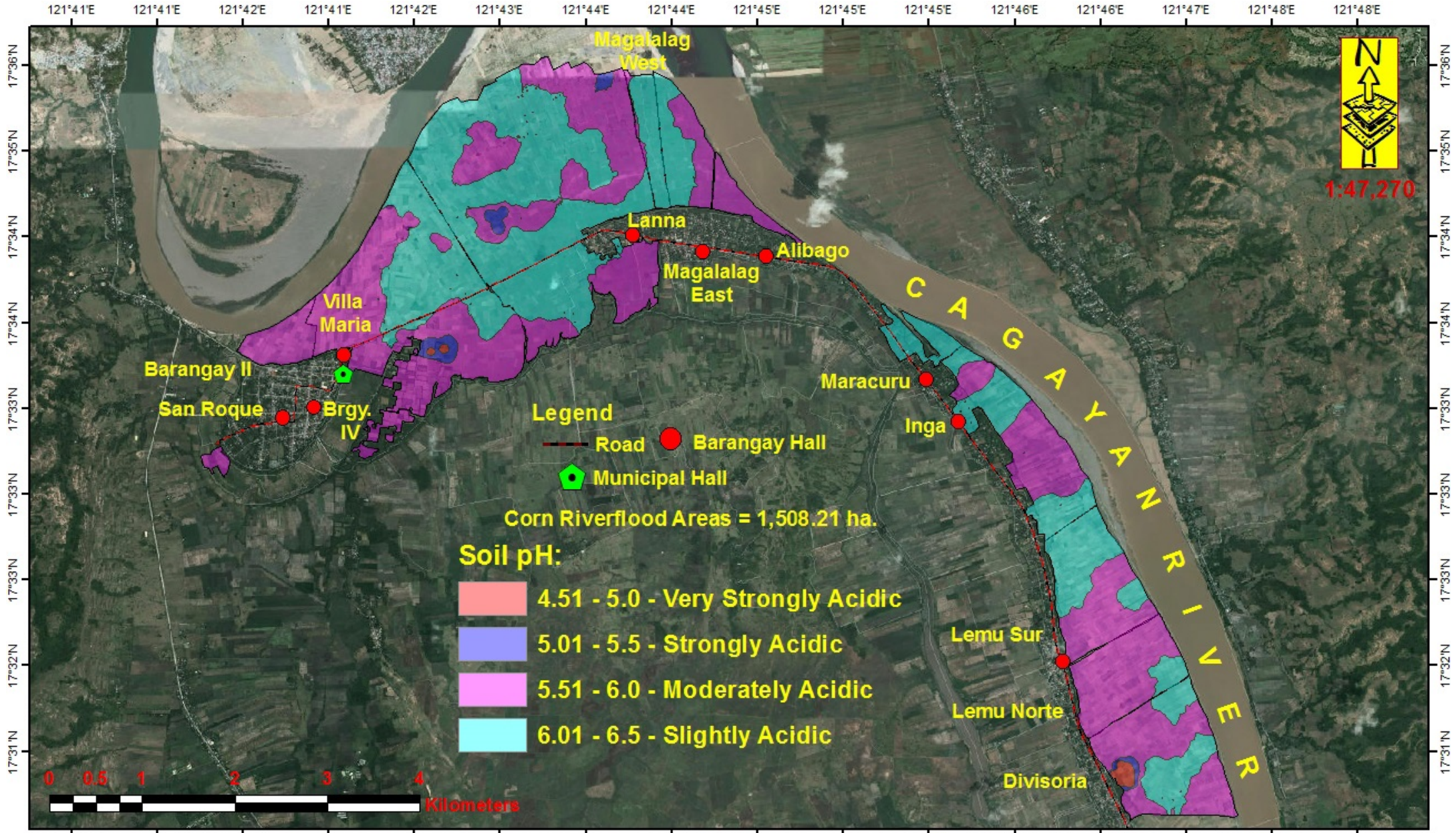
Prepared By:  
 ISAGANI S. CABALSI    JOEY A. CALUCAG  
 JOUIE D. SUMIGAD    LORDAN P. LENTINO

Reviewed By:  
 ANGELITA B. CALUBAQUIB    RESTITUTO E. SAMATRA  
 Agriculturist II    Char. RAEG  
 GENEROSO M. OLI    LUCRECIO R. ALVIAR, JR., CESO III  
 Engineer III    Regional Executive Director

**Corn Riverflood Areas = 1506.21 ha**

Barangay IV = 10.5 ha	Magalalag West = 63.0 ha
Lemu Norte = 112.0 ha	Magalalag East = 39.4 ha
Lemu Sur = 89.7 ha	Lanna = 527.0 ha
San Roque = 4.71 ha	Alibago = 20.6 ha
Villa Maria = 314.0 ha	Maracuru = 24.7 ha
Barangay II = 52.6 ha	Inga = 127.0 ha
	Divisoria = 143.0 ha

DATE ACCOMPLISHED: JUNE, 2014



<p><b>pH map</b> Corn Riverflood Area Municipality of Enrile Province of Cagayan</p>	Prepared By:	Reviewed By:	<p>Corn Riverflood Areas = 1506.21 ha</p> <table border="0"> <tr> <td>Barangay IV = 10.5 ha</td> <td>Magalalag West = 63.0 ha</td> </tr> <tr> <td>Lemu Norte = 112.0 ha</td> <td>Magalalag East = 39.4 ha</td> </tr> <tr> <td>Lemu Sur = 89.7 ha</td> <td>Lanna = 527.0 ha</td> </tr> <tr> <td>San Roque = 4.71 ha</td> <td>Alibago = 20.6 ha</td> </tr> <tr> <td>Villa Maria = 314.0 ha</td> <td>Maracuru = 24.7 ha</td> </tr> <tr> <td>Barangay II = 52.6 ha</td> <td>Inga = 127.0 ha</td> </tr> <tr> <td></td> <td>Divisoria = 143.0 ha</td> </tr> </table>	Barangay IV = 10.5 ha	Magalalag West = 63.0 ha	Lemu Norte = 112.0 ha	Magalalag East = 39.4 ha	Lemu Sur = 89.7 ha	Lanna = 527.0 ha	San Roque = 4.71 ha	Alibago = 20.6 ha	Villa Maria = 314.0 ha	Maracuru = 24.7 ha	Barangay II = 52.6 ha	Inga = 127.0 ha		Divisoria = 143.0 ha
	Barangay IV = 10.5 ha	Magalalag West = 63.0 ha															
	Lemu Norte = 112.0 ha	Magalalag East = 39.4 ha															
Lemu Sur = 89.7 ha	Lanna = 527.0 ha																
San Roque = 4.71 ha	Alibago = 20.6 ha																
Villa Maria = 314.0 ha	Maracuru = 24.7 ha																
Barangay II = 52.6 ha	Inga = 127.0 ha																
	Divisoria = 143.0 ha																
ISAGANI S. CABALSI	JOEY A. CALUCAG	ANGELITA B. CALUBAQUIB Agriculturist II	RESTITUTO E. SAMATRA Chf. RAEG														
JOUIE D. SUMIGAD	LORDAN P. LENTINO	GENEROSO M. OLI Engineer III	LUCRECIO R. ALVIAR, JR., CESO III Regional Executive Director														

DAIS ACCOMPLISHED: JUNE, 2014