

### NITROGEN MAP

#### Corn Riverflood Area

#### Municipality of Alcala

#### Province of Cagayan

Prepared By:

BEVERLYANNE D. TAMAYAO  
 JOANAROSE R. ROQUE  
 LORDAN P. LENTINO  
 ISAGANI S. CABALSI  
 JOUIE D. SUMIGAD  
 JOEYA CALUCAG  
 ELEAZAR GABRIEL A. CASTILLO  
 SALLY JANE P. BALBUENA

Reviewed By:

ANGELITAB. CALUBAQUIB  
Agriculturist II

GENEROSO M. OLI  
Engineer III

RESTITUTO E. SAMATRA  
Chief, RAEG

NENITA M. YABIS  
AGRIIARCC

ORLANDO J. LORENZANA  
Regional Technical Director

LUCRECIO R. ALVIAR, JR., CESO III  
Regional Executive Director

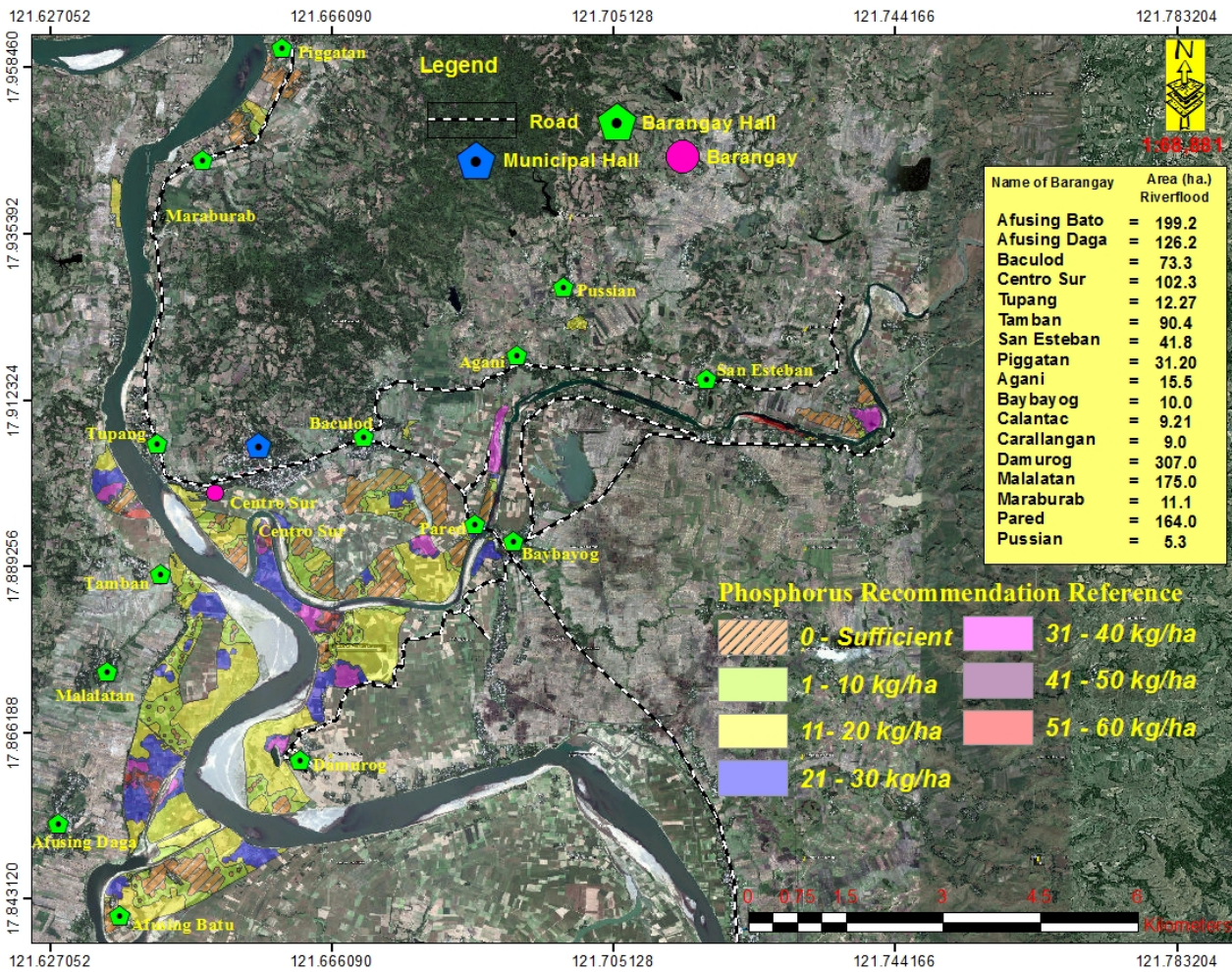
Datum: UTM WGS 1984  
 Map Source:  
 Google Earth™ V8.3.2127  
 © 2018 GOOGLE  
 © 2015 CNES / Spot Image  
 © 2013 GOOGLE

This Map was produced under the collaborative undertaking of the Department of Agriculture Regional Field Office No. 02, Regional Agricultural Engineering Group and the Local Government Unit, CY 2014.

Boundaries are not considered authoritative. The Department of Agriculture Regional Field Office No. 02 claims the sole responsibility for any omission or error of the map users are requested to inform the RAEGD 02/JALC, San Gabriel, Tuguegarao City, Cagayan.

Particular Recommendation Reference (Reliable for 3 years) provided by: Department of Agriculture, RAEGD 02 Regional Agricultural Engineering Group Com. Soc. & Publicity Group © Copy Right Reserved.

DATE ACCOMPLISHED:  
OCTOBER, 2014



**DEPARTMENT OF AGRICULTURE**  
**RAEG**

**PHOSPHORUS MAP**  
**Corn Riverflood Area**  
**Municipality of Alcalá**  
**Province of Cagayan**

Prepared By:  
 BEVERLYANNE D. TAMAYAO  
 JOANAROSE R. ROQUE  
 LORDAN P. LENTINO  
 ISAGANI S. CABALSI  
 JOUIE D. SUMIGAD  
 JOEYA CALUCAG  
 ELEAZAR GABRIEL A. CASTILLO  
 SALLY JANE P. BALBUENA

Reviewed By:  
 ANGELITAB. CALUBAQUIB  
 Agriculturist II  
 GENEROSO M. OLI  
 Engineer III  
 RESTITUTO E. SAMATRA  
 Chief, RAEG  
 NENITAM. YABIS  
 AGRILIIARCC  
 ORLANDO J. LORENZANA  
 Regional Technical Director  
 LUCRECIO R. ALVIAR, JR., CESO III  
 Regional Executive Director

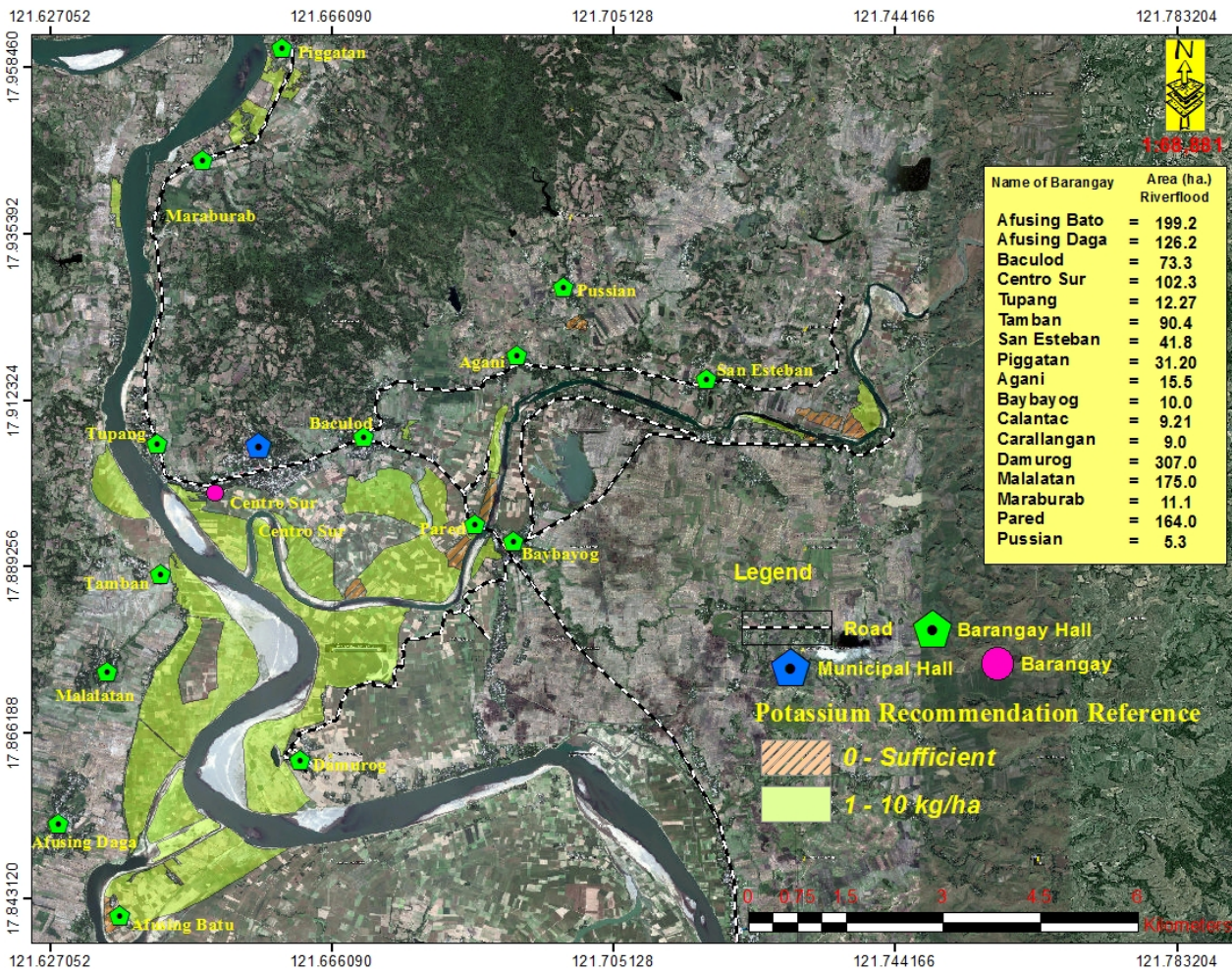
Datum: CGCS WGS 1984  
 Map Source:  
 Google Earth™ 19.9.3.2197  
 © 2018 GOOGLE  
 © 2013 CNES / SpotImage  
 © 2013 GOOGLE

This Map was produced under the collaborative undertaking of the Department of Agriculture Regional Field Office No. 02 (Regional Agricultural Engineering Group) and the Local Government Unit, CY 2014.

Boundaries are not considered authoritative. The Department of Agriculture Regional Field Office No. 02 claims the sole responsibility for any omission or error of the map users are requested to inform the RAEGD 02/JALAC, San Gabriel, Tuguegarao City, Cagayan.

Particular Recommendation Reference (Reliable for 3 years) Distributed by: Department of Agriculture, RAEGD 02/Regional Agricultural Engineering Group Com. Soc. P. Felicity Group © Copy Right Reserved.

DATE ACCOMPLISHED:  
 OCTOBER, 2014



Name of Barangay	Area (ha.)
Afusing Bato	= 199.2
Afusing Daga	= 126.2
Baculod	= 73.3
Centro Sur	= 102.3
Tupang	= 12.27
Tamban	= 90.4
San Esteban	= 41.8
Piggatan	= 31.20
Agani	= 15.5
Baybayog	= 10.0
Calantac	= 9.21
Carallangan	= 9.0
Dam urog	= 307.0
Malalatan	= 175.0
Maraburab	= 11.1
Pared	= 164.0
Pussian	= 5.3




### POTASSIUM MAP Corn Riverflood Area Municipality of Alcala Province of Cagayan

Prepared By:

BEVERLYANNE D. TAMAYAO  
JOANA ROSE R. ROQUE  
LORDAN P. LENTINO  
ISAGANI S. CABALSI  
JOUIE D. SUMIGAD  
JOEYA CALUCAG  
ELEAZAR GABRIEL A. CASTILLO  
SALLY JANE P. BALBUENA

Reviewed By:

ANGELITAB. CALUBAQUIB  
Agriculturist II

GENEROSO M. OLI  
Engineer III

RESTITUTO E. SAMATRA  
Chief, RAEG

NENITA M. YABIS  
AGRIIARCC

ORLANDO J. LORENZANA  
Regional Technical Director

LUCRECIO R. ALVIAR, JR., CESO III  
Regional Executive Director

Datum: UTM WGS 1984

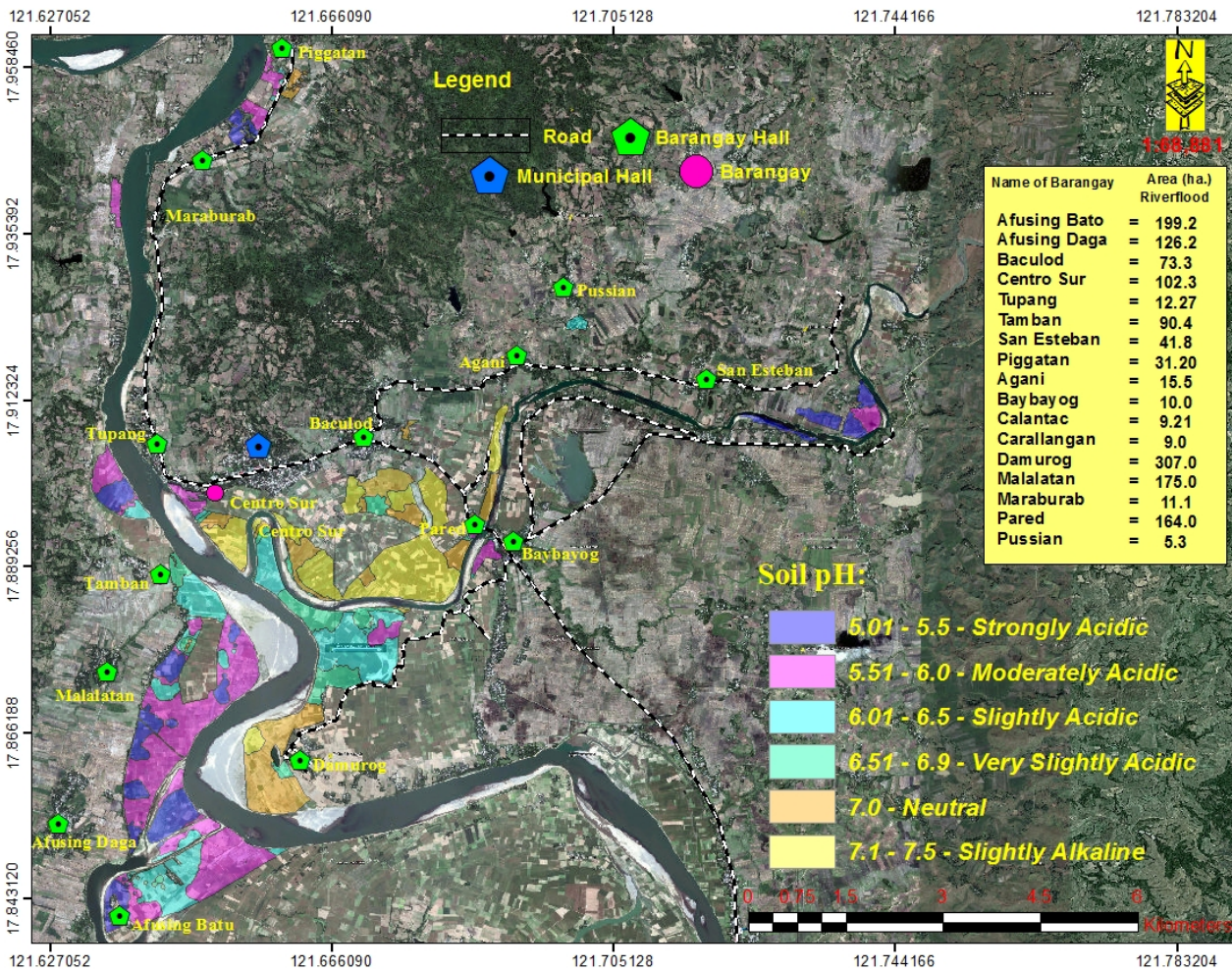
Map Source:  
Google Earth™ V8.3.2127  
© 2018 GOOGLE  
© 2015 CNR 1 Satellite  
© 2015 GOOGLE

This K. Map was produced under the collaboration of the Department of Agriculture, Regional Field Office No. 02, Regional Agricultural Engineering Group and the Local Government Unit, CY 2014.

Boundaries are not considered authoritative. The Department of Agriculture (Regional Field Office No. 02) claims the sole responsibility for any omission or error on the map. Users are requested to inform the RAEG (RAEG, San Gabriel, Tuguegarao City, Cagayan).

Potassium Recommendation Reference (Reliable for 3 years) provided by: Department of Agriculture, RFO 02 Regional Agricultural Engineering Group Com. Soc. Fertility Group. © Copy Right Reserved.

DATE ACCOMPLISHED:  
OCTOBER, 2014



**DEPARTMENT OF AGRICULTURE**  
**RAEG**

**pH MAP**  
**Corn Riverflood Area**  
**Municipality of Alcala**  
**Province of Cagayan**

Prepared By:  
 BEVERLYANNE D. TAMAYAO  
 JOANAROSE R. ROQUE  
 LORDAN P. LENTINO  
 ISAGANI S. CABALSI  
 JOUIE D. SUMIGAD  
 JOEYA CALUCAG

Reviewed By:  
 ELEAZAR GABRIEL A. CASTILLO  
 SALLY JANE P. BALBUENA

**ANGELITAB. CALUBAQUIB**  
 Agriculturist II

**GENEROSO M. OLI**  
 Engineer III

**RESTITUTO E. SAMATRA**  
 Chief, RAEG

**NENITA M. YABIS**  
 AGRILIARCC

**ORLANDO J. LORENZANA**  
 Regional Technical Director

**LUCRECIO R. ALVIAR, JR., CESO III**  
 Regional Executive Director

Datum: UTM WGS 1984  
 Map Source:  
 Google Earth™ V8.3.2127  
 © 2018 GOOGLE  
 © 2015 CNES / SpotImage  
 © 2013 GOOGLE

This pH Map was produced under the collaborative undertaking of the Department of Agriculture Regional Field Office No. 02, Regional Agricultural Engineering Group and the Local Government Unit, CY 2014.

Boundaries are not considered authoritative. The Department of Agriculture Regional Field Office No. 02 claims the sole responsibility for any omission or error of the map users are requested to inform the RAEGD 02/JALAC, San Gabriel, Tuguegarao City, Cagayan.

Particular Recognition Reference (Reliable for 3 years) credited by: Department of Agriculture, RAEGD 02 Regional Agricultural Engineering Group Com. Soc. & Publicity Group © Copy Right Reserved.

DATE ACCOMPLISHED:  
 OCTOBER, 2014