

121.376140

121.395520

121.414900

121.434280

121.453660

18.441685

18.414886

18.388087

18.361288

18.334489

18.441685

18.414886

18.388087

18.361288

18.334489

Legend:

 Road

 Barangay

 Municipal Hall

Nitrogen (N) Recommendation Reference

 100-110 kg/ha

 111-120 kg/ha

Corn Riverflood Areas = 668.79 has.	
Libertad	= 86.40 has.
Lucban	= 149.7 has.
Siguiran	= 15.49 has.
Sto.Tomas	= 34.70 has.
Simayong	= 101.0 has.
Banguian	= 23.40 has.
Sta. Rosa	= 258.1 has.



121.376140

121.395520

121.414900

121.434280

121.453660



Com Soil Fertility Map Com Riverflood Area Municipality of Abulug Province of Cagayan

Reviewed by:

ANGELITA B. CALUBAQUIB
Agriculturist II

GENERO SO M. OLI
Engineer III

RESTITUTO E. SAMATRA
Chief, RAEG

NENITA M. YABIS
Agri II / ARCC

ORLANDO J. LORENZANA
Regional Technical Director

LUCRECIO R. ALVIAR, JR., CE SO III
Regional Executive Director

Prepared by:

JOANA ROSER R. ROQUE
BEVERLY ANNE D. TAMAYAO

JOUIE D. SUMINGAD

LORDAN P. LENTINO
ELEAZAR A. CA STILLO

JOEY A. CALUCAG

ISAGANI S. CABALSI
SALLY JANE P. BALBUENA

Map Information
Map Title: Com Soil Fertility Map
Map Scale: 1:52,000
Map Date: 2014
Map Author: [Name]
Map Reviewer: [Name]

DATE ACCOMPISHED:
NOVEMBER, 2014

121.376140

121.395520

121.414900

121.434280

121.453660

18.441685

18.414886

18.388087

18.361288

18.334489

18.441685

18.414886

18.388087

18.361288

18.334489

Legend:

Road

Barangay

Municipal Hall

Phosphorous (P) Recommendation Reference

- 1-10 kg/ha
- 11-20 kg/ha
- 21-30 kg/ha
- 31-40 kg/ha

Corn Riverflood Areas = 668.79 has.

Libertad	= 86.40 has.
Lucban	= 149.7 has.
Siguiran	= 15.49 has.
Sto.Tomas	= 34.70 has.
Simayong	= 101.0 has.
Banguian	= 23.40 has.
Sta. Rosa	= 258.1 has.



121.376140

121.395520

121.414900

121.434280

121.453660



Com Soil Fertility Map Com Riverflood Area Municipality of Abulug Province of Cagayan

Prepared by:
JOANA ROSER R. ROQUE
BEVERLY ANNE D. TAMAYAO

JOUIE D. SUMIGAD
LORDAN P. LENTINO
ELEAZAR A. CA STILLO

JOEY A. CALUCAG
ISAGANI S. CABALSI
SALLY JANE P. BALBUENA

Reviewed by:

ANGELITA B. CALUBAQUIB
Agriculturist II

GENERO SO M. OLI
Engineer III

RESTITUTO E. SAMATRA
Chief, RAEG

NENITA M. YABIS
Agri II / ARCC

ORLANDO J. LORENZANA
Regional Technical Director

LUCRECIO R. ALVIAR, JR., CE SO III
Regional Executive Director

Map Information

DATE ACCOMPISHED: NOVEMBER, 2014

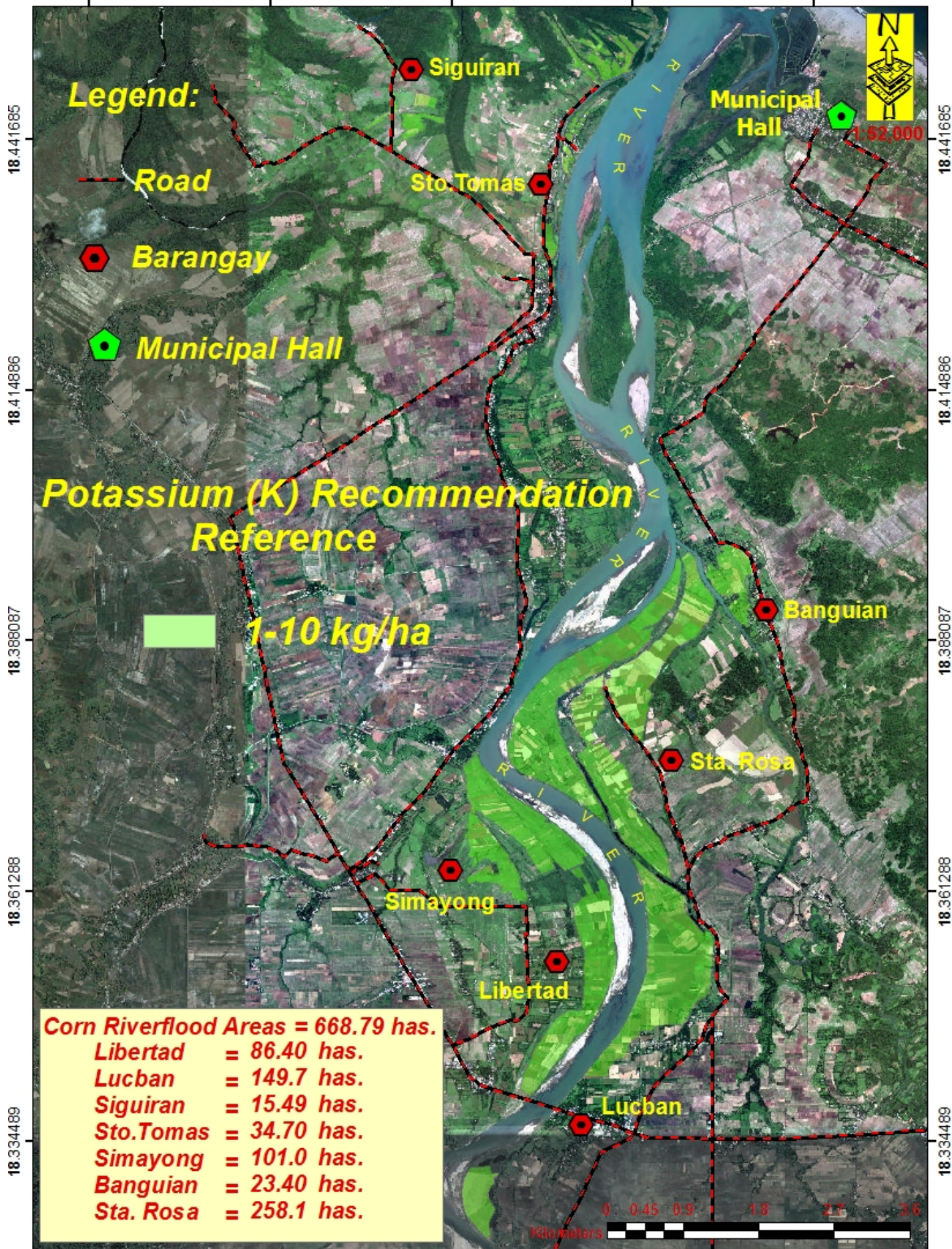
121.376140

121.395520

121.414900

121.434280

121.453660



Potassium (K) Recommendation Reference

1-10 kg/ha

Corn Riverflood Areas = 668.79 has.

Libertad	= 86.40 has.
Lucban	= 149.7 has.
Siguiran	= 15.49 has.
Sto. Tomas	= 34.70 has.
Simayong	= 101.0 has.
Banguian	= 23.40 has.
Sta. Rosa	= 258.1 has.


121.376140

121.395520

121.414900

121.434280

121.453660



Com Soil Fertility Map
Com Riverflood Area
Municipality of Abulug
Province of Cagayan

Prepared by:
JOANA ROSER R. ROQUE
BEVERLY ANNE D. TAMAYAO

JOUIE D. SUMIGAD
LORDAN P. LENTINO
ELEAZAR A. CA STILLO

JOEY A. CALUCAG
ISAGANI S. CABALSI
SALLY JANE P. BALBUENA

Reviewed by:

ANGELITA B. CALUBAQUIB
Agriculturist II

GENERO SO M. OLI
Engineer III

RESTITUTO E. SAMATRA
Chief, RAEG

NENITA M. YABIS
Agri II / ARCC

ORLANDO J. LORENZANA
Regional Technical Director

LUCRECIO R. ALVIAR, JR., CE SO III
Regional Executive Director

DATE ACCOMPISHED:
NOVEMBER, 2014

121.376140 121.395520 121.414900 121.434280 121.453660

Legend:

Road

Barangay

Municipal Hall

Soil pH

4.1-4.5 Extremely Acidic

4.51-5.0 Very Strongly Acidic

5.01-5.5 Strongly Acidic

5.51-6.0 Moderately Acidic

6.01-6.5 Slightly Acidic

6.51-6.9 Very Slightly Acidic



18.441685

18.441685

18.414886

18.414886

18.388087

18.388087

18.361288

18.361288

18.334489

18.334489

Corn Riverflood Areas = 668.79 has.	
Libertad	= 86.40 has.
Lucban	= 149.7 has.
Siguiran	= 15.49 has.
Sto.Tomas	= 34.70 has.
Simayong	= 101.0 has.
Banguian	= 23.40 has.
Sta. Rosa	= 258.1 has.



121.376140 121.395520 121.414900 121.434280 121.453660



pH Map Corn Riverflood Area
Municipality of Abulug
Province of Cagayan

Prepared by:

JOANA ROSER R. ROQUE
BEVERLY ANNE D. TAMAYAO

JOUIE D. SUMINGAD
LORDAN P. LENTINO
ELEAZAR A. CA STILLO

JOEY A. CALUCAG
ISAGANI S. CABALSI
SALLY JANE P. BALBUENA

Reviewed by:

ANGELITA B. CALUBAQUIB
Agriculturist II

GENERO SO M. OLI
Engineer III

RESTITUTO E. SAMATRA
Chief, RAEG

NENITA M. YABIS
Agri II / ARCC

ORLANDO J. LORENZANA
Regional Technical Director

LUCRECIO R. ALVIAR, JR., CE SO III
Regional Executive Director

<p>APPROVED FOR RELEASE</p> <p>DATE: _____</p> <p>BY: _____</p>

DATE ACCOMPLISHED:
NOVEMBER, 2014