

NITROGEN MAP

Municipality of SOLANA Province of Cagayan, Philippines

- Prepared by:**
- | | |
|-----------------------------|-----------------------|
| Eric G. Mata | Joana Rose R. Roque |
| Jouie D. Sumigad | Chinkee A. Agustin |
| Isagani S. Cabalsi | Sally Jane B. Durbin |
| Crescen Karl M. Espejo | Adrian Joe T. Moreno |
| Eleazar Gabriel A. Castillo | Alister Earl M. Meman |
| Kenneth Godfrey M. De Leon | Aarone M. Furugganan |

Reviewed by:

ANGELITA B. CALUBAQUIB
Science Research Specialist II

Noted by:

RESTITUTO E. SAMATRA
Chief, RAED

NENITA M. YABIS
Asst. Regional Com Coordinator

ROSE MARY G. AQUINO
OIC - Regional Technical Director

LORENZO M. CARANGUIAN, DPA
Regional Executive Director

Version: GC/WS/05, 2008
Map Series: Geodetic Reference YLD 1390
© 2008 GADGE
© 2008 GADGE
© 2008 GADGE

This Facility Map was prepared under the administrative control of the Department of Agriculture Regional Field Office No. 02 Regional Agricultural Engineering Group and the Local Government Unit, C.T. 2012

Resolutions are not intended, authoritative.

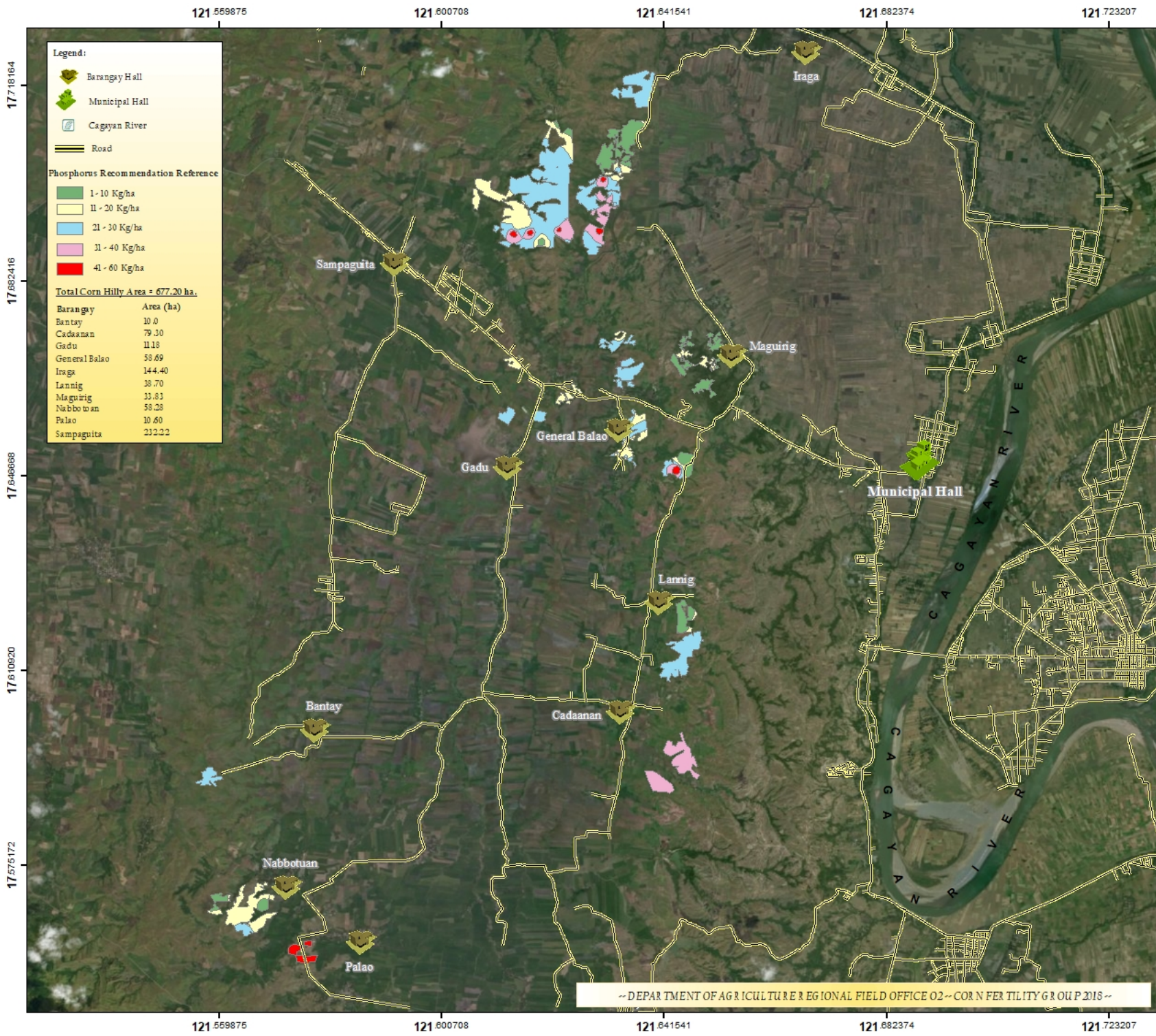
The Department of Agriculture Regional Field Office No. 02 bears the sole responsibility for any omissions/errors of Regional Offices, except those indicated in the following:

Regional Office, Regional Office, Cagayan

Technical Recommendation Reference - Reliable for Users

Distributed by: Department of Agriculture, RDO2
Regional Agricultural Engineering Group
Cebu Hall and City Group

© Copy Right Reserved



Legend:

- Barangay Hall
- Municipal Hall
- Cagayan River
- Road

Phosphorus Recommendation Reference

- 1 - 10 Kg/ha
- 11 - 20 Kg/ha
- 21 - 30 Kg/ha
- 31 - 40 Kg/ha
- 41 - 60 Kg/ha

Total Corn Hilly Area = 677.20 ha.

Barangay	Area (ha)
Bantay	10.0
Cadaanan	79.30
Gadu	11.18
General Balao	58.69
Iraga	144.40
Lannig	38.70
Maguirig	33.83
Nabbotuan	58.28
Palao	10.60
Sampaguita	232.22

N
W —+— E
S

1:70,800

0 0.475 0.95 1.9 2.85 3.8 Kilometers

1698

Date Accomplished: May, 2018

PHOSPHORUS MAP

Municipality of SOLANA Province of Cagayan, Philippines

- Prepared by:**
- | | |
|-----------------------------|-----------------------|
| Eric G. Mata | Joana Rose R. Roque |
| Jovie D. Sumigad | Chinkee A. Agustin |
| Isagani S. Cabalsi | Sally Jane B. Durbin |
| Crescen Karl M. Espejo | Adrian Joe T. Moreno |
| Eleazar Gabriel A. Castillo | Alister Earl M. Meman |
| Kenneth Godfrey M. De Leon | Aarone M. Furugganan |

Reviewed by:

ANGELITA B. CALUBAQUIB
Science Research Specialist II

Noted by:

RESTITUTO E. SAMATRA
Chief, RAED

NENITA M. YABIS
Asst. Regional Com Coordinator

ROSE MARY G. AQUINO
OIC - Regional Technical Director

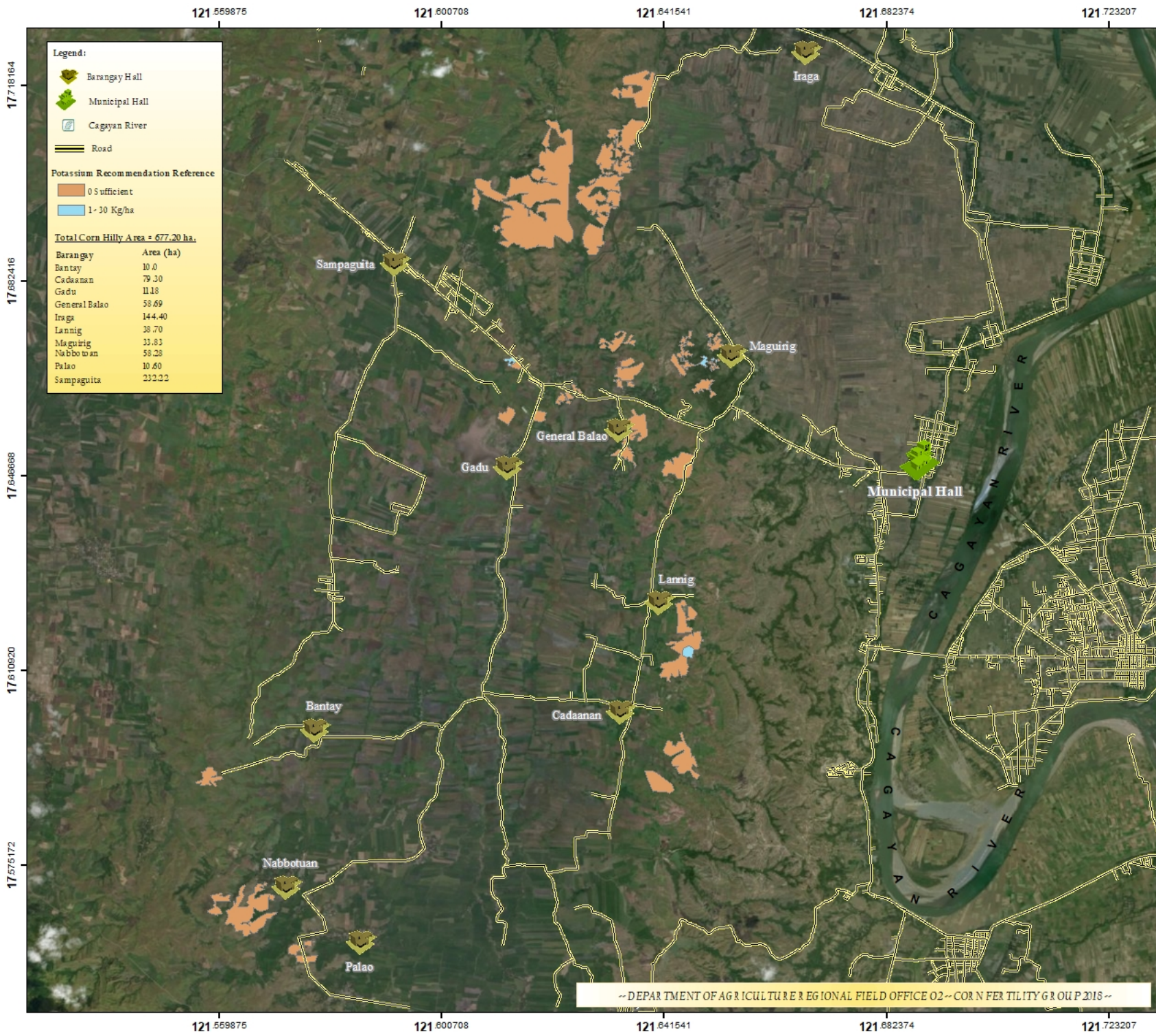
LORENZO M. CARANGUAN, DPA
Regional Executive Director

Bureau GC/WS/05, 2008
 Map Series: Geodetic Reference YLD 1390
 © 2008 GAGRI
 © 2008 CAGV Region
 © 2008 GAGRI

This Facility Map was prepared under the official business order of the Department of Agriculture Regional Field Office No. 02 Regional Agricultural Engineering Group and the Local Government Unit, C/ 2017.

Responsibility is not intended, and therefore, the Department of Agriculture Regional Field Office No. 02 does not assume any responsibility for any consequences or errors of the map users who misinterpret the data.

Technical Recommendation Reference - Reliable for 1 year
 Distributed by: Department of Agriculture, RDO02
 Regional Agricultural Engineering Group
 CAGV RAED and Group
 © Copy Right Reserved



Legend:

- Barangay Hall
- Municipal Hall
- Cagayan River
- Road

Potassium Recommendation Reference

- 0 Sufficient
- 1-30 Kg/ha

Total Corn Hilly Area - 677.20 ha.

Barangay	Area (ha)
Bantay	10.0
Cadaanan	79.30
Gadu	11.18
General Balao	58.69
Iriga	144.40
Lannig	38.70
Maguirig	33.83
Nabbotuan	58.28
Palao	10.60
Sampaguita	232.22

N
W —+— E
S

1:70,800

0 0.475 0.95 1.9 2.85 3.8 Kilometers

1698

Date Accomplished: May, 2018

POTASSIUM MAP

Municipality of SOLANA Province of Cagayan, Philippines

- Prepared by:**
- | | |
|-----------------------------|-----------------------|
| Eric G. Mata | Joana Rose R. Roque |
| Jouie D. Sumigad | Chinkee A. Agustin |
| Isagani S. Cabalsi | Sally Jane B. Durain |
| Crescen Karl M. Espejo | Adrian Joe T. Moreno |
| Eleazar Gabriel A. Castillo | Alister Earl M. Meman |
| Kenneth Godfrey M. De Leon | Aarone M. Furugganan |

Reviewed by:

ANGELITA B. CALUBAQUIB
Science Research Specialist II

Noted by:

RESTITUTO E. SAMATRA
Chief, RA ED

NENITA M. YABIS
Asst. Regional Com Coordinator

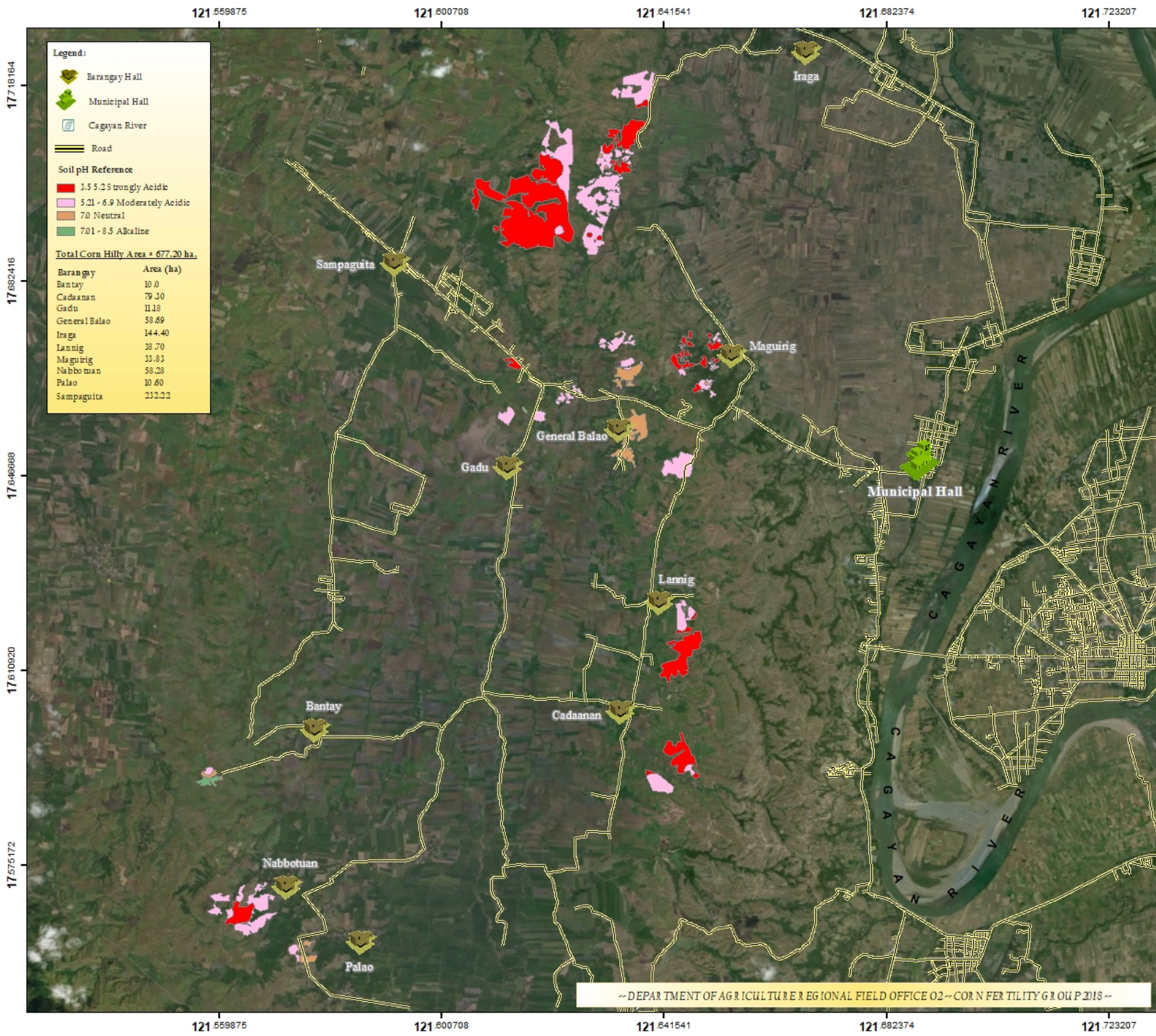
ROSE MARY G. AQUINO
OIC - Regional Technical Director

LORENZO M. CARANGUIAN, DPA
Regional Executive Director

Bureau GC/WSIS, 2008
 Map Series: Geodetic Reference YLD 1397
 © 2008 GADGEI
 © 2008 GADGEI
 © 2008 GADGEI

This Facility Map was prepared under the administrative control of the Department of Agriculture Regional Field Office No. 02 Regional Agricultural Engineering Group and the Local Government Unit, C.T. 2012.
 No liability is assumed for errors and omissions.
 The Department of Agriculture Regional Field Office No. 02 does not assume any responsibility for any consequences or errors of Regional Offices not prepared by or under the supervision of the Regional Office, Regional Agricultural Engineering Group, Cagayan.

Potassium Recommendation Reference - Reliable for 1 year
 Distributed by: Department of Agriculture, RDO 02
 Regional Agricultural Engineering Group
 Cansuabon Field Office Group
 © Copy Right Reserved



Legend:

- Barangay Hall
- Municipal Hall
- Cagayan River
- Road

Soil pH Reference

- 3.5 - 5.2 Strongly Acidic
- 5.21 - 6.9 Moderately Acidic
- 7.0 Neutral
- 7.01 - 8.5 Alkaline

Total Corn Hilly Area = 677.20 ha.

Barangay	Area (ha)
Bantay	10.0
Cadaanan	79.30
Gadu	11.18
General Balao	58.69
Iraga	144.40
Lannig	38.70
Maguirig	33.83
Nabbotuan	58.28
Palao	10.60
Sampaguita	232.22

N
W —+— E
S

1:70,800

0 0.475 0.95 1.9 2.85 3.8 Kilometers

Date Accomplished: May, 2018

SOIL pH MAP

Municipality of SOLANA

Province of Cagayan, Philippines

- Prepared by:**
- | | |
|-----------------------------|-----------------------|
| Eric G. Mata | Joana Rose R. Roque |
| Jovie D. Sumigad | Chinkee A. Agustin |
| Isagani S. Cabalsi | Sally Jane B. Durbin |
| Crescen Karl M. Espejo | Adrian Joe T. Moreno |
| Eleazar Gabriel A. Castillo | Alister Earl M. Meman |
| Kenneth Godfrey M. De Leon | Aarone M. Furugganan |

Reviewed by:

ANGELITA B. CALUBAQUIB
Science Research Specialist II

Noted by:

RESTITUTO E. SAMATRA
Chief, RA ED

NENITA M. YABIS
Asst. Regional Com Coordinator

ROSE MARY G. AQUINO
OIC - Regional Technical Director

LORENZO M. CARANGUAN, DPA
Regional Executive Director

Division Office, RFO 02
Map Series: Geology-Soil Series Y10-1300
RFO 02
RFO 02
RFO 02

This pH Map was produced under the collaboration and leadership of the Department of Agriculture Regional Field Office No. 02 Regional Agronomy and Engineering Services Unit (RAED) and the Department of Agriculture Regional Office No. 02. It is the sole responsibility of any contractor/s or users of the map. The Department of Agriculture Regional Office No. 02 does not assume any liability for any errors or omissions in the map. The map is intended for use by the Department of Agriculture Regional Office No. 02, Regional Agronomy and Engineering Services Unit, Cagayan.

This document is a reference only. It is not a legal document.
It is not a substitute for a legal document.
It is not a substitute for a legal document.
It is not a substitute for a legal document.

© Copy Right Reserved