

N
W — E
S

1:24,000

0 0.125 0.25 0.5 0.75 1
Kilometers

NITROGEN MAP
Municipality of Pamplona
Province of Cagayan, Philippines

- Prepared by:
- Alister Earl M. Meman
 - Jouie D. Sumigad
 - Isagani S. Cabalsi
 - Geze James V. Binuyat
 - Eleazar Gabriel A. Castillo
 - Sally Jane B. Duruin
 - Eric G. Mata
 - Aarone M. Furugganan
 - Kenneth Godfrey M. Deleon
 - Crescen Karl M. Espejo
 - Joana Rose R. Roque
 - Chinkee A. Agustin

Reviewed by:
ANGELITA B. CALUBAQUIB
Science Research Specialist II

Noted by:

RESTITUTO E. SAMATRA
Chief RAED

NENITA M. YABIS
Asst. Regional Corn Coordinator

ORLANDO J. LORENZANA
Regional Technical Director

NARCISO A. EDILLO, MA, Ed.
Regional Executive Director

Datum: GCS WGS 1984
Map Source: Google Earth Pro V8.3.2.1917
© 2018 GOOGLE, © 2013 CNES / Spot Image / © 2013 GOOGLE

This Corn Fertility Map was produced under the collaborative undertaking of the Department of Agriculture Regional Field Office No. 02, Regional Agricultural Engineering Division and the Local Government Unit, CY 2017. Boundaries are not considered authoritative.

The Department of Agriculture Regional Field Office No. 02 claims the sole responsibility for any errors or omissions of this map. Users are required to inform the DA-RO 02, RAED, San Gabriel, Iguigueno City, Cagayan, whenever Recommendation Reference is reliable for 3 years.

Distributed by: Department of Agriculture, RO 02
Regional Agricultural Engineering Division
Corn Soil Fertility Group
© Copy Right Reserved 2017 - 2018

Legend

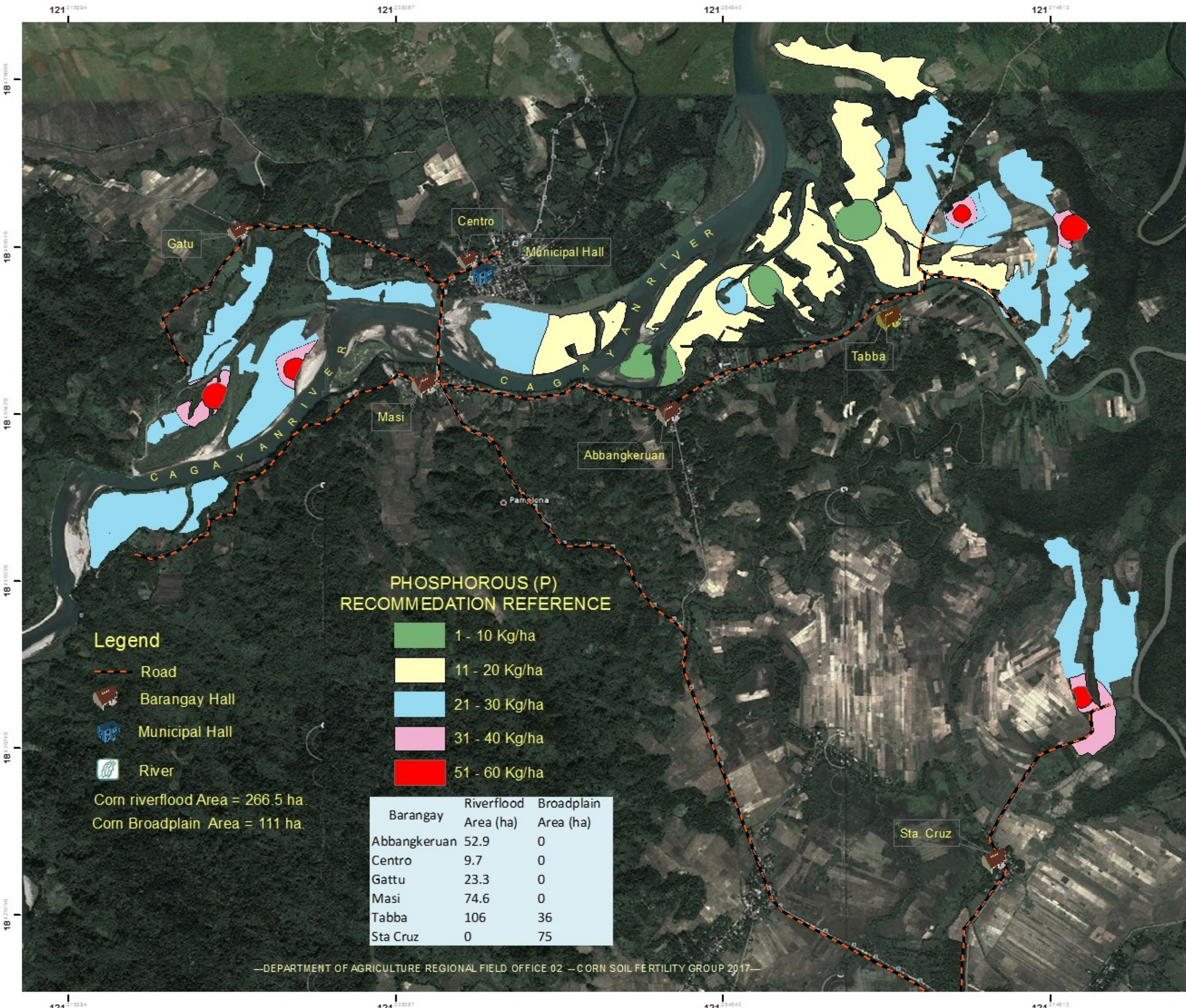
- Road
- Barangay Hall
- Municipal Hall
- River

Corn riverflood Area = 266.5 ha.
Corn Broadplain Area = 111 ha.

**NITROGEN (N)
RECOMMEDATION REFERENCE**

- 100 Kg/ ha
- 111 - 120 Kg/ha
- 131 - 140 Kg/ha

Barangay	Riverflood Area (ha)	Broadplain Area (ha)
Abbangkeruan	52.9	0
Centro	9.7	0
Gattu	23.3	0
Masi	74.6	0
Tabba	106	36
Sta Cruz	0	75



**PHOSPHOROUS (P)
RECOMMEDATION REFERENCE**

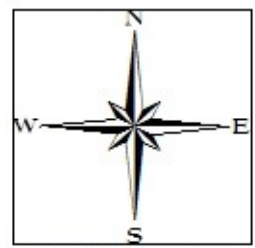
- 1 - 10 Kg/ha
- 11 - 20 Kg/ha
- 21 - 30 Kg/ha
- 31 - 40 Kg/ha
- 51 - 60 Kg/ha

Legend

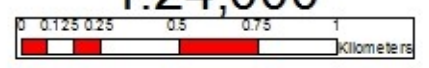
- Road
- Barangay Hall
- Municipal Hall
- River



Corn riverflood Area = 266.5 ha.
Corn Broadplain Area = 111 ha.

Barangay	Riverflood Area (ha)	Broadplain Area (ha)
Abbangkeruan	52.9	0
Centro	9.7	0
Gattu	23.3	0
Masi	74.6	0
Tabba	106	36
Sta Cruz	0	75



1:24,000



PHOSPHOROUS MAP
Municipality of Pamplona
Province of Cagayan, Philippines

- Prepared by:**
- Alister Earl M. Meman
 - Jouie D. Sumigad
 - Isagani S. Cabalsi
 - Geze James V. Binuyat
 - Eleazar Gabriel A. Castillo
 - Sally Jane B. Duruin
 - Eric G. Mata
 - Aarone M. Furugganan
 - Kenneth Godfrey M. Deleon
 - Crescen Karl M. Espejo
 - Joana Rose R. Roque
 - Chinkee A. Agustin

Reviewed by:
ANGELITA B. CALUBAQUIB
Science Research Specialist II

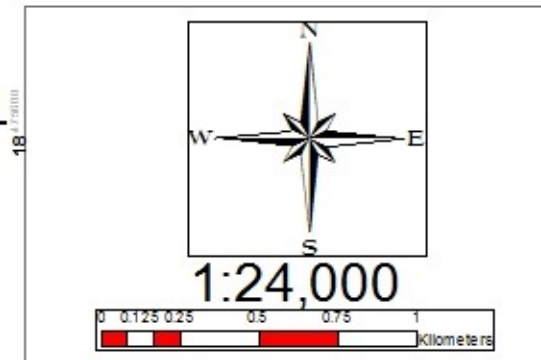
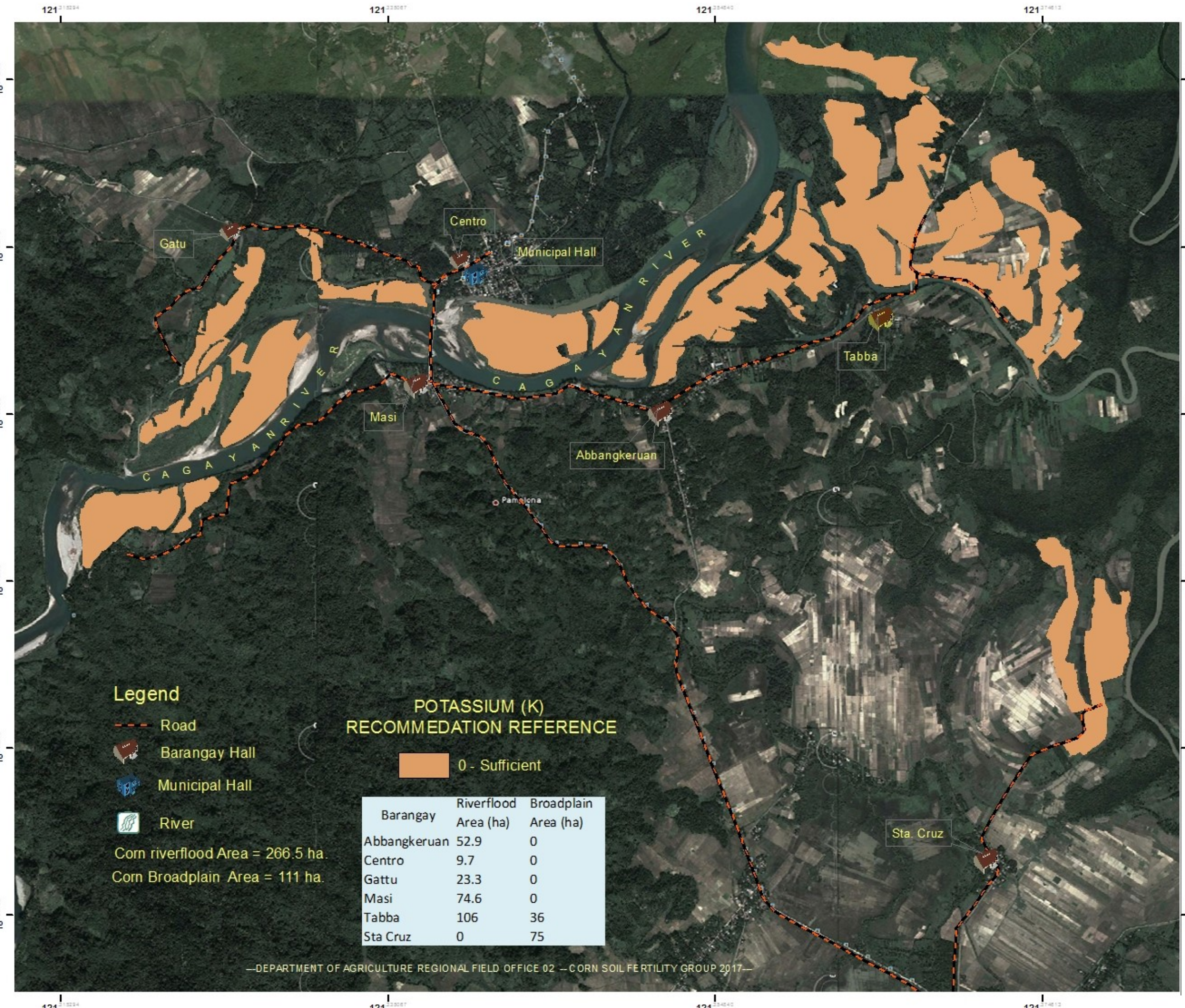
- Noted by:**
- RESTITUTO E. SAMATRA
Chief RAED
 - NENITA M. YABIS
Asst. Regional Corn Coordinator
 - ORLANDO J. LORENZANA
Regional Technical Director
 - NARCISO A. EDILLO, MA, Ed.
Regional Executive Director

Datum: GCS WGS 1984
Map Source: Google Earth Version 8.3.2.1917
© 2018 GOOGLE LLC / 2013 China / Spot Image / 2013 GOOGLE

This corn Fertility Map was produced under the collaborative undertaking of the Department of Agriculture Regional Field Office No. 02, the DA-IPRO 02, RAED, San Gabriel, Iguiguan City, Cagayan. Fertilizer Recommendation Reference: Reliable for 3 years.

Distributed by: Department of Agriculture, IPRO 02
Regional Agricultural Engineering Division
Corn Soil Fertility Group
© Copy Right Reserved 2017 - 2018

DATE ACCOMPLISHED:
September, 2017



POTASSIUM MAP
Municipality of Pamplona
Province of Cagayan, Philippines

Prepared by:

- Alister Earl M. Meman
- Jouie D. Sumigad
- Isagani S. Cabalsi
- Geze James V. Binuyat
- Eleazar Gabriel A. Castillo
- Sally Jane B. Duruin
- Eric G. Mata
- Aarone M. Furugganan
- Kenneth Godfrey M. Deleon
- Crescen Karl M. Espejo
- Joana Rose R. Roque
- Chinkee A. Agustin

Reviewed by:

- ANGELITA B. CALUBAQUIB
Science Research Specialist II

Noted by:

- RESTITUTO E. SAMATRA
Chief RAED
- NENITA M. YABIS
Asst. Regional Corn Coordinator
- ORLANDO J. LORENZANA
Regional Technical Director
- NARCISO A. EDILLO, MA, Ed.
Regional Executive Director

Legend

- Road
- Barangay Hall
- Municipal Hall
- River

Corn riverflood Area = 266.5 ha.
Corn Broadplain Area = 111 ha.

**POTASSIUM (K)
RECOMMEDATION REFERENCE**

0 - Sufficient

Barangay	Riverflood Area (ha)	Broadplain Area (ha)
Abbangkeruan	52.9	0
Centro	9.7	0
Gattu	23.3	0
Masi	74.6	0
Tabba	106	36
Sta Cruz	0	75

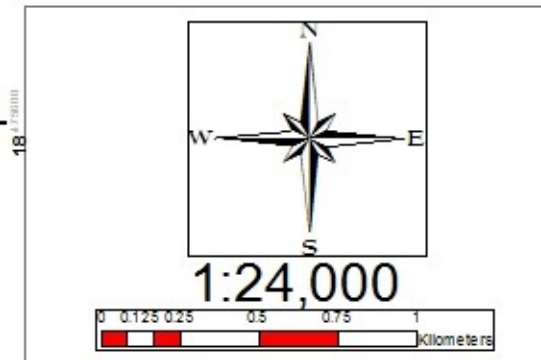
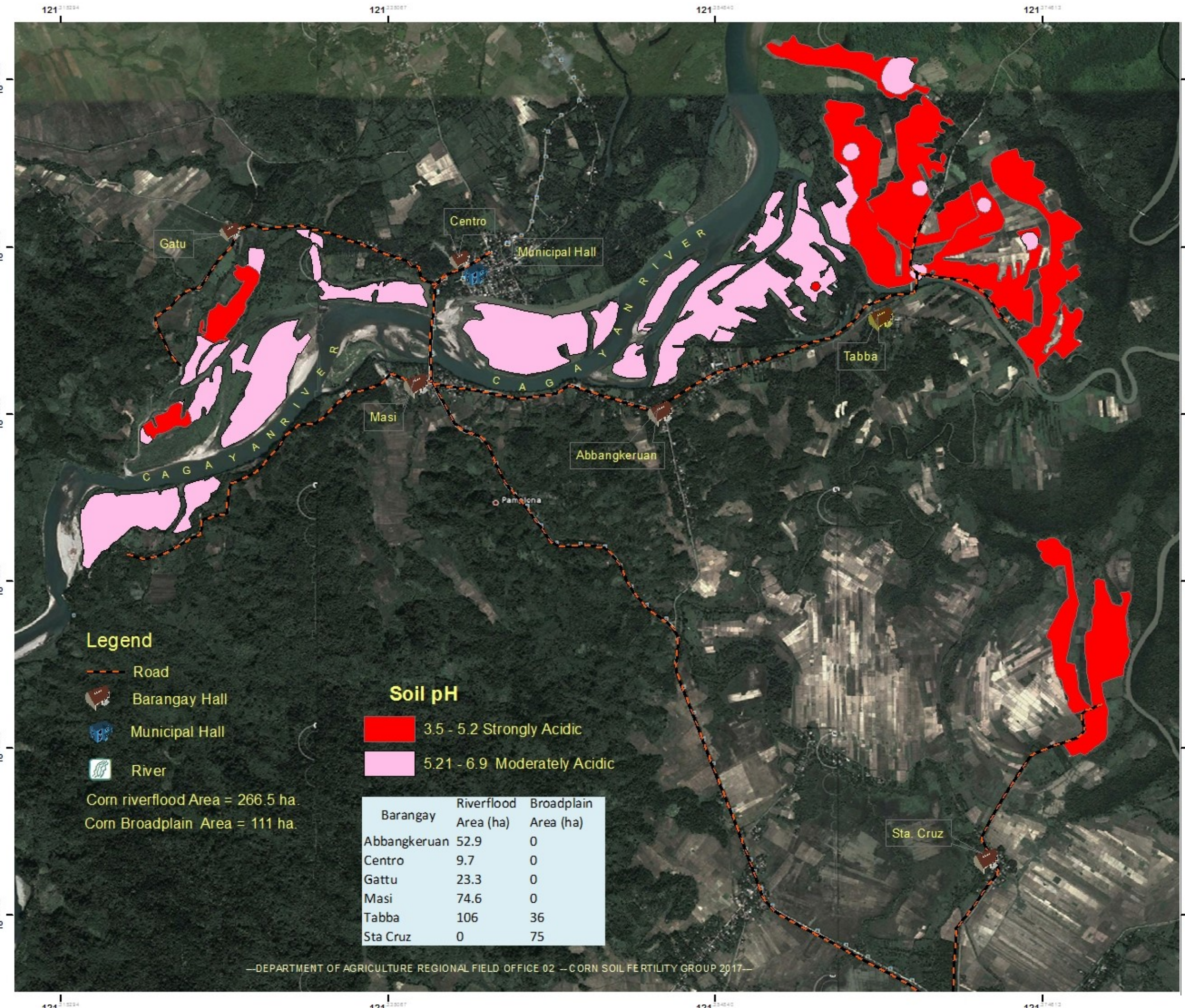
Datum: GCS WGS 1984
Map Source: Google Earth V8.3.3.2197
© 2018 GOOGLE, © 2013 Cesa / Spot Image © 2013 GOOGLE

This Corn Fertility Map was produced under the collaborative undertaking of the Department of Agriculture Regional Field Office No. 02, Regional Agricultural Engineering Division and the Local Government Unit, CY 2017. Boundaries are not considered authoritative.

The Department of Agriculture Regional Field Office No. 02 claims the sole responsibility for any errors or omissions of this map. Users are required to inform the DA-RO 02, RAED, San Gabriel, Iguiguan City, Cagayan. Fertilizer Recommendation Reference: Reliable for 3 years.

Distributed by: Department of Agriculture, RO 02
Regional Agricultural Engineering Division
Corn Soil Fertility Group
© Copy Right Reserved 2017 - 2018

DATE ACCOMPLISHED:
September, 2017



pH MAP
Municipality of Pamplona
Province of Cagayan, Philippines

Prepared by:

- Alister Earl M. Mema
- Jouie D. Sumigad
- Isagani S. Cabalsi
- Geze James V. Binuyat
- Eleazar Gabriel A. Castillo
- Sally Jane B. Duruin
- Eric G. Mata
- Aarone M. Furugganan
- Kenneth Godfrey M. Deleon
- Crescen Karl M. Espejo
- Joana Rose R. Roque
- Chennkee A. Agustin

Reviewed by:

- ANGELITA B. CALUBAQUIB
Science Research Specialist II

Noted by:

- RESTITUTO E. SAMATRA
Chief RAED
- NENITA M. YABIS
Asst. Regional Corn Coordinator
- ORLANDO J. LORENZANA
Regional Technical Director
- NARCISO A. EDILLO, MA, Ed.
Regional Executive Director

Datum: GCS WGS 1984
Map Source: Google Earth Version 8.3.2.1917
© 2018 GOOGLE, © 2013 Cesa / Spot Image / © 2015 GOOGLE

This map was produced under the collaborative undertaking of the Department of Agriculture Regional Field Office No. 02, Regional Agricultural Engineering Division and the Local Government Unit, CY 2017. Boundaries are not considered authoritative.

The Department of Agriculture Regional Field Office No. 02 claims the sole responsibility for any errors or omissions of this map. Users are required to inform the DA-RO 02, RAED, San Gabriel, Iguiguan City, Cagayan, for any updates. Reference: Reliable for 3 years.

Distributed by: Department of Agriculture, RO 02
Regional Agricultural Engineering Division
Corn Soil Fertility Group
© Copy Right Reserved 2017 - 2018

Soil pH

- 3.5 - 5.2 Strongly Acidic
- 5.21 - 6.9 Moderately Acidic

Barangay	Riverflood Area (ha)	Broadplain Area (ha)
Abbangkeruan	52.9	0
Centro	9.7	0
Gatu	23.3	0
Masi	74.6	0
Tabba	106	36
Sta Cruz	0	75

Corn riverflood Area = 266.5 ha.
Corn Broadplain Area = 111 ha.