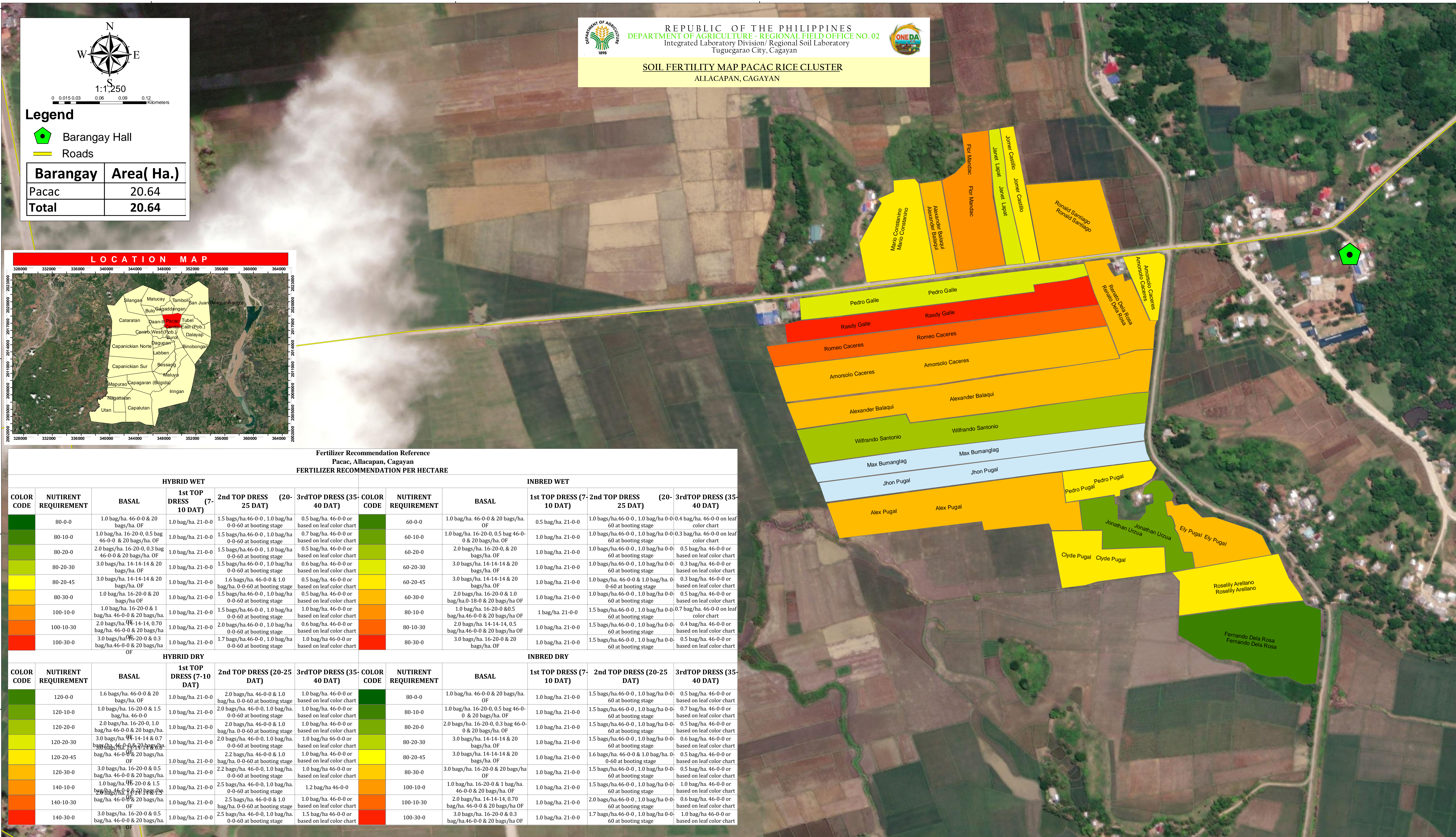
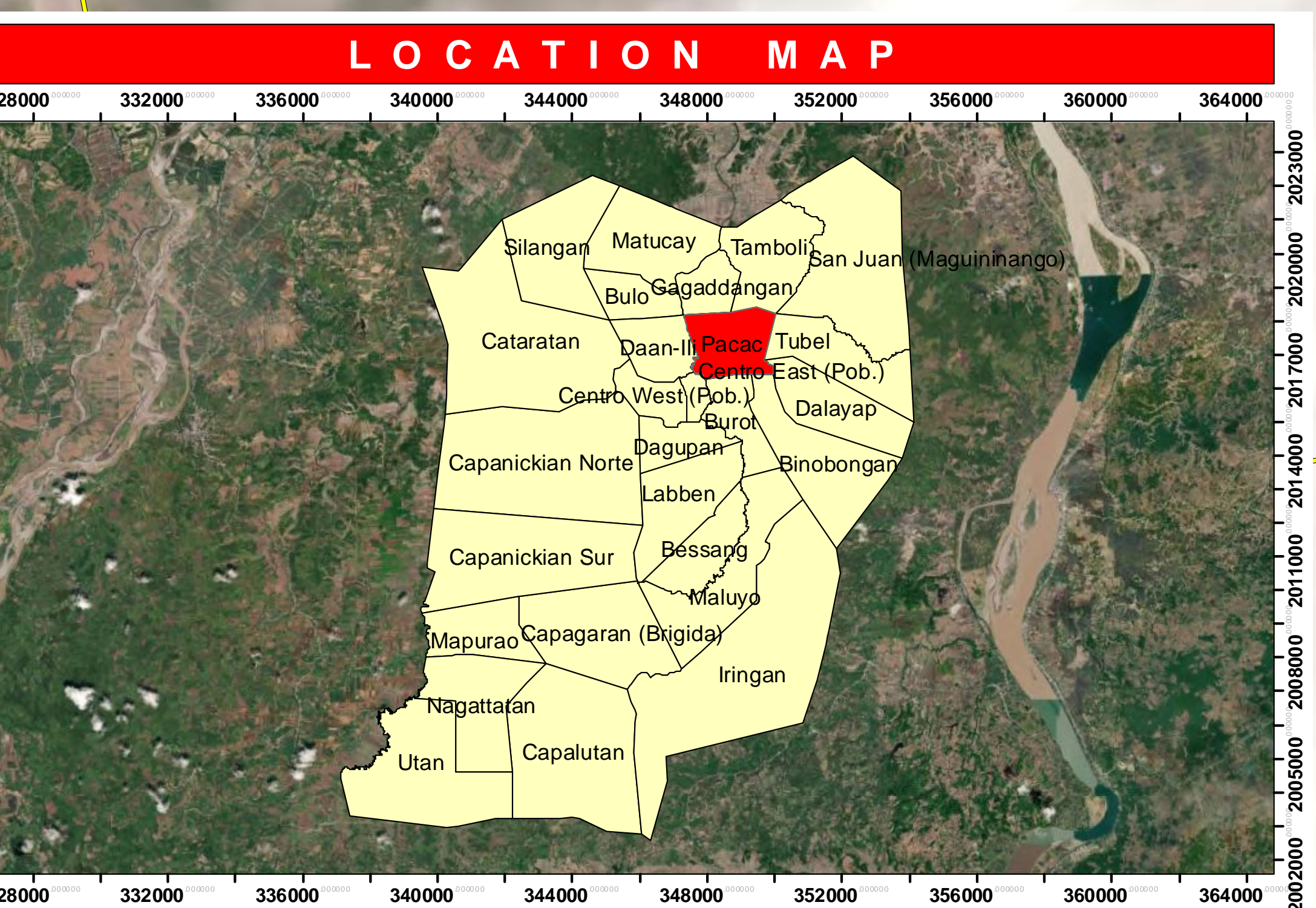


**Legend**  
 Barangay Hall  
 Roads

Barangay	Area( Ha.)
Pacac	20.64
<b>Total</b>	<b>20.64</b>



**Fertilizer Recommendation Reference**  
 Pacac, Allacapan, Cagayan  
**FERTILIZER RECOMMENDATION PER HECTARE**

HYBRID WET					INBRED WET						
COLOR CODE	NUTRIENT REQUIREMENT	BASAL	1st TOP DRESS (7-10 DAT)	2nd TOP DRESS (20-25 DAT)	3rd TOP DRESS (35-40 DAT)	COLOR CODE	NUTRIENT REQUIREMENT	BASAL	1st TOP DRESS (7-10 DAT)	2nd TOP DRESS (20-25 DAT)	3rd TOP DRESS (35-40 DAT)
	80-0-0	1.0 bag/ha. 46-0-0 & 20 bags/ha. OF	1.0 bag/ha. 21-0-0	1.5 bags/ha. 46-0-0, 1.0 bag/ha. 0-0-60 at booting stage	0.5 bag/ha. 46-0-0 or based on leaf color chart		60-0-0	1.0 bag/ha. 46-0-0 & 20 bags/ha. OF	0.5 bag/ha. 21-0-0	1.0 bags/ha. 46-0-0, 1.0 bag/ha. 0-0-60 at booting stage	0.4 bag/ha. 46-0-0 on leaf color chart
	80-10-0	1.0 bag/ha. 16-20-0, 0.5 bag 46-0-0 & 20 bags/ha. OF	1.0 bag/ha. 21-0-0	1.5 bags/ha. 46-0-0, 1.0 bag/ha. 0-0-60 at booting stage	0.7 bag/ha. 46-0-0 or based on leaf color chart		60-10-0	1.0 bag/ha. 16-20-0, 0.5 bag 46-0-0 & 20 bags/ha. OF	1.0 bag/ha. 21-0-0	1.0 bags/ha. 46-0-0, 1.0 bag/ha. 0-0-60 at booting stage	0.3 bag/ha. 46-0-0 on leaf color chart
	80-20-0	2.0 bags/ha. 16-20-0, 0.3 bag 46-0-0 & 20 bags/ha. OF	1.0 bag/ha. 21-0-0	1.5 bags/ha. 46-0-0, 1.0 bag/ha. 0-0-60 at booting stage	0.5 bag/ha. 46-0-0 or based on leaf color chart		60-20-0	2.0 bags/ha. 16-20-0, & 20 bags/ha. OF	1.0 bag/ha. 21-0-0	1.0 bags/ha. 46-0-0, 1.0 bag/ha. 0-0-60 at booting stage	0.5 bag/ha. 46-0-0 or based on leaf color chart
	80-20-30	3.0 bags/ha. 14-14-14 & 20 bags/ha. OF	1.0 bag/ha. 21-0-0	1.5 bags/ha. 46-0-0, 1.0 bag/ha. 0-0-60 at booting stage	0.6 bag/ha. 46-0-0 or based on leaf color chart		60-20-30	3.0 bags/ha. 14-14-14 & 20 bags/ha. OF	1.0 bag/ha. 21-0-0	1.0 bags/ha. 46-0-0, 1.0 bag/ha. 0-0-60 at booting stage	0.3 bag/ha. 46-0-0 or based on leaf color chart
	80-20-45	3.0 bags/ha. 14-14-14 & 20 bags/ha. OF	1.0 bag/ha. 21-0-0	1.6 bags/ha. 46-0-0 & 1.0 bag/ha. 0-0-60 at booting stage	0.5 bag/ha. 46-0-0 or based on leaf color chart		60-20-45	3.0 bags/ha. 14-14-14 & 20 bags/ha. OF	1.0 bag/ha. 21-0-0	1.0 bags/ha. 46-0-0 & 1.0 bag/ha. 0-0-60 at booting stage	0.3 bag/ha. 46-0-0 or based on leaf color chart
	80-30-0	1.0 bag/ha. 16-20-0 & 20 bags/ha. OF	1.0 bag/ha. 21-0-0	1.5 bags/ha. 46-0-0, 1.0 bag/ha. 0-0-60 at booting stage	0.5 bag/ha. 46-0-0 or based on leaf color chart		60-30-0	1.0 bag/ha. 16-20-0 & 1.0 bag/ha. 0-0-60 at booting stage	1.0 bag/ha. 21-0-0	1.0 bags/ha. 46-0-0 & 1.0 bag/ha. 0-0-60 at booting stage	0.5 bag/ha. 46-0-0 or based on leaf color chart
	100-10-0	1.0 bag/ha. 16-20-0 & 1 bag/ha. 46-0-0 & 20 bags/ha. OF	1.0 bag/ha. 21-0-0	1.5 bags/ha. 46-0-0, 1.0 bag/ha. 0-0-60 at booting stage	1.0 bag/ha. 46-0-0 or based on leaf color chart		80-10-0	1.0 bag/ha. 16-20-0 & 0.5 bag/ha. 46-0-0 & 20 bags/ha. OF	1 bag/ha. 21-0-0	1.5 bags/ha. 46-0-0, 1.0 bag/ha. 0-0-60 at booting stage	0.7 bag/ha. 46-0-0 on leaf color chart
	100-10-30	2.0 bags/ha. 16-20-0 & 1.0 bag/ha. 46-0-0 & 20 bags/ha. OF	1.0 bag/ha. 21-0-0	2.0 bags/ha. 46-0-0, 1.0 bag/ha. 0-0-60 at booting stage	0.6 bag/ha. 46-0-0 or based on leaf color chart		80-10-30	2.0 bags/ha. 14-14-14, 0.5 bag/ha. 46-0-0 & 20 bags/ha. OF	1.0 bag/ha. 21-0-0	1.5 bags/ha. 46-0-0, 1.0 bag/ha. 0-0-60 at booting stage	0.4 bag/ha. 46-0-0 or based on leaf color chart
	100-30-0	3.0 bags/ha. 16-20-0 & 0.3 bag/ha. 46-0-0 & 20 bags/ha. OF	1.0 bag/ha. 21-0-0	1.7 bags/ha. 46-0-0, 1.0 bag/ha. 0-0-60 at booting stage	1.0 bag/ha. 46-0-0 or based on leaf color chart		80-30-0	3.0 bags/ha. 16-20-0 & 20 bags/ha. OF	1.0 bag/ha. 21-0-0	1.5 bags/ha. 46-0-0, 1.0 bag/ha. 0-0-60 at booting stage	0.5 bag/ha. 46-0-0 or based on leaf color chart
HYBRID DRY					INBRED DRY						
COLOR CODE	NUTRIENT REQUIREMENT	BASAL	1st TOP DRESS (7-10 DAT)	2nd TOP DRESS (20-25 DAT)	3rd TOP DRESS (35-40 DAT)	COLOR CODE	NUTRIENT REQUIREMENT	BASAL	1st TOP DRESS (7-10 DAT)	2nd TOP DRESS (20-25 DAT)	3rd TOP DRESS (35-40 DAT)
	120-0-0	1.6 bags/ha. 46-0-0 & 20 bags/ha. OF	1.0 bag/ha. 21-0-0	2.0 bags/ha. 46-0-0 & 1.0 bag/ha. 0-0-60 at booting stage	1.0 bag/ha. 46-0-0 or based on leaf color chart		80-0-0	1.0 bag/ha. 46-0-0 & 20 bags/ha. OF	1.0 bag/ha. 21-0-0	1.5 bags/ha. 46-0-0, 1.0 bag/ha. 0-0-60 at booting stage	0.5 bag/ha. 46-0-0 or based on leaf color chart
	120-10-0	1.0 bags/ha. 16-20-0 & 1.5 bag/ha. 46-0-0	1.0 bag/ha. 21-0-0	2.0 bags/ha. 46-0-0, 1.0 bag/ha. 0-0-60 at booting stage	1.0 bag/ha. 46-0-0 or based on leaf color chart		80-10-0	1.0 bag/ha. 16-20-0, 0.5 bag 46-0-0 & 20 bags/ha. OF	1.0 bag/ha. 21-0-0	1.5 bags/ha. 46-0-0, 1.0 bag/ha. 0-0-60 at booting stage	0.7 bag/ha. 46-0-0 or based on leaf color chart
	120-20-0	2.0 bags/ha. 16-20-0, 1.0 bag/ha. 46-0-0 & 20 bags/ha. OF	1.0 bag/ha. 21-0-0	2.0 bags/ha. 46-0-0 & 1.0 bag/ha. 0-0-60 at booting stage	1.0 bag/ha. 46-0-0 or based on leaf color chart		80-20-0	2.0 bags/ha. 16-20-0, 0.3 bag 46-0-0 & 20 bags/ha. OF	1.0 bag/ha. 21-0-0	1.5 bags/ha. 46-0-0, 1.0 bag/ha. 0-0-60 at booting stage	0.5 bag/ha. 46-0-0 or based on leaf color chart
	120-20-30	3.0 bags/ha. 14-14-14 & 0.7 bag/ha. 46-0-0 & 20 bags/ha. OF	1.0 bag/ha. 21-0-0	2.0 bags/ha. 46-0-0, 1.0 bag/ha. 0-0-60 at booting stage	1.0 bag/ha. 46-0-0 or based on leaf color chart		80-20-30	3.0 bags/ha. 14-14-14 & 20 bags/ha. OF	1.0 bag/ha. 21-0-0	1.5 bags/ha. 46-0-0, 1.0 bag/ha. 0-0-60 at booting stage	0.6 bag/ha. 46-0-0 or based on leaf color chart
	120-20-45	3.0 bags/ha. 14-14-14 & 20 bags/ha. OF	1.0 bag/ha. 21-0-0	2.2 bags/ha. 46-0-0 & 1.0 bag/ha. 0-0-60 at booting stage	1.0 bag/ha. 46-0-0 or based on leaf color chart		80-20-45	3.0 bags/ha. 14-14-14 & 20 bags/ha. OF	1.0 bag/ha. 21-0-0	1.6 bags/ha. 46-0-0 & 1.0 bag/ha. 0-0-60 at booting stage	0.5 bag/ha. 46-0-0 or based on leaf color chart
	120-30-0	3.0 bags/ha. 16-20-0 & 0.5 bag/ha. 46-0-0 & 20 bags/ha. OF	1.0 bag/ha. 21-0-0	2.2 bags/ha. 46-0-0, 1.0 bag/ha. 0-0-60 at booting stage	1.0 bag/ha. 46-0-0 or based on leaf color chart		80-30-0	3.0 bags/ha. 16-20-0 & 20 bags/ha. OF	1.0 bag/ha. 21-0-0	1.5 bags/ha. 46-0-0, 1.0 bag/ha. 0-0-60 at booting stage	0.5 bag/ha. 46-0-0 or based on leaf color chart
	140-10-0	1.0 bag/ha. 16-20-0 & 1.5 bag/ha. 46-0-0 & 20 bags/ha. OF	1.0 bag/ha. 21-0-0	2.5 bags/ha. 46-0-0, 1.0 bag/ha. 0-0-60 at booting stage	1.2 bag/ha. 46-0-0		100-10-0	1.0 bag/ha. 16-20-0 & 1 bag/ha. 46-0-0 & 20 bags/ha. OF	1.0 bag/ha. 21-0-0	1.5 bags/ha. 46-0-0, 1.0 bag/ha. 0-0-60 at booting stage	1.0 bag/ha. 46-0-0 or based on leaf color chart
	140-10-30	2.0 bags/ha. 16-20-0 & 1.0 bag/ha. 46-0-0 & 20 bags/ha. OF	1.0 bag/ha. 21-0-0	2.5 bags/ha. 46-0-0 & 1.0 bag/ha. 0-0-60 at booting stage	1.0 bag/ha. 46-0-0 or based on leaf color chart		100-10-30	2.0 bags/ha. 14-14-14, 0.70 bag/ha. 46-0-0 & 20 bags/ha. OF	1.0 bag/ha. 21-0-0	2.0 bags/ha. 46-0-0, 1.0 bag/ha. 0-0-60 at booting stage	0.6 bag/ha. 46-0-0 or based on leaf color chart
	140-30-0	3.0 bags/ha. 16-20-0 & 0.5 bag/ha. 46-0-0 & 20 bags/ha. OF	1.0 bag/ha. 21-0-0	2.5 bags/ha. 46-0-0, 1.0 bag/ha. 0-0-60 at booting stage	1.5 bag/ha. 46-0-0 or based on leaf color chart		100-30-0	3.0 bags/ha. 16-20-0 & 0.3 bag/ha. 46-0-0 & 20 bags/ha. OF	1.0 bag/ha. 21-0-0	1.7 bags/ha. 46-0-0, 1.0 bag/ha. 0-0-60 at booting stage	1.0 bag/ha. 46-0-0 or based on leaf color chart

Prepared by:  <b>DONNA AURA E. CALIBUYUT</b> Agriculturist II	Reviewed by:  <b>FEVIE RICA A. ANCHETA, RCh</b> Chem. IV/Chief, RSL	Noted by:  <b>GERLY T. ZULAETA, DVM</b> OIC-Chief, Integrated Laboratory Division	Approved by:  <b>MARCISO A. EDILLO, M.A.ED</b> Regional Executive Director
<b>SOIL FERTILITY MAPPING GROUP</b> Integrated Laboratory Division/ Regional Soil Laboratory	 <b>ROBERTO C. BUSANA, DVM</b> OIC-Regional Technical Director for Operation and Extension	 <b>ROSE MARY G. AQUINO</b> Regional Technical Director for Research And Regulations	This Soil Fertility Map was produced under the collaborative undertaking of the Department of Agriculture Regional Field Office No. 02, Regional Soil Laboratory and Local Government Unit, CY 2022 Boundaries are not considered authoritative.  The Department of Agriculture Regional Field Office No. 02 claims the sole responsibility for any omissions/errors of this map. Users are requested to inform the DA-RFO 02, Integrated Laboratory Division, Tuguegarao City, Cagayan.  Distributed by: Department of Agriculture, RFO 02 Regional Soil Laboratory Soil Fertility Mapping Group © Copyright Reserved 2022