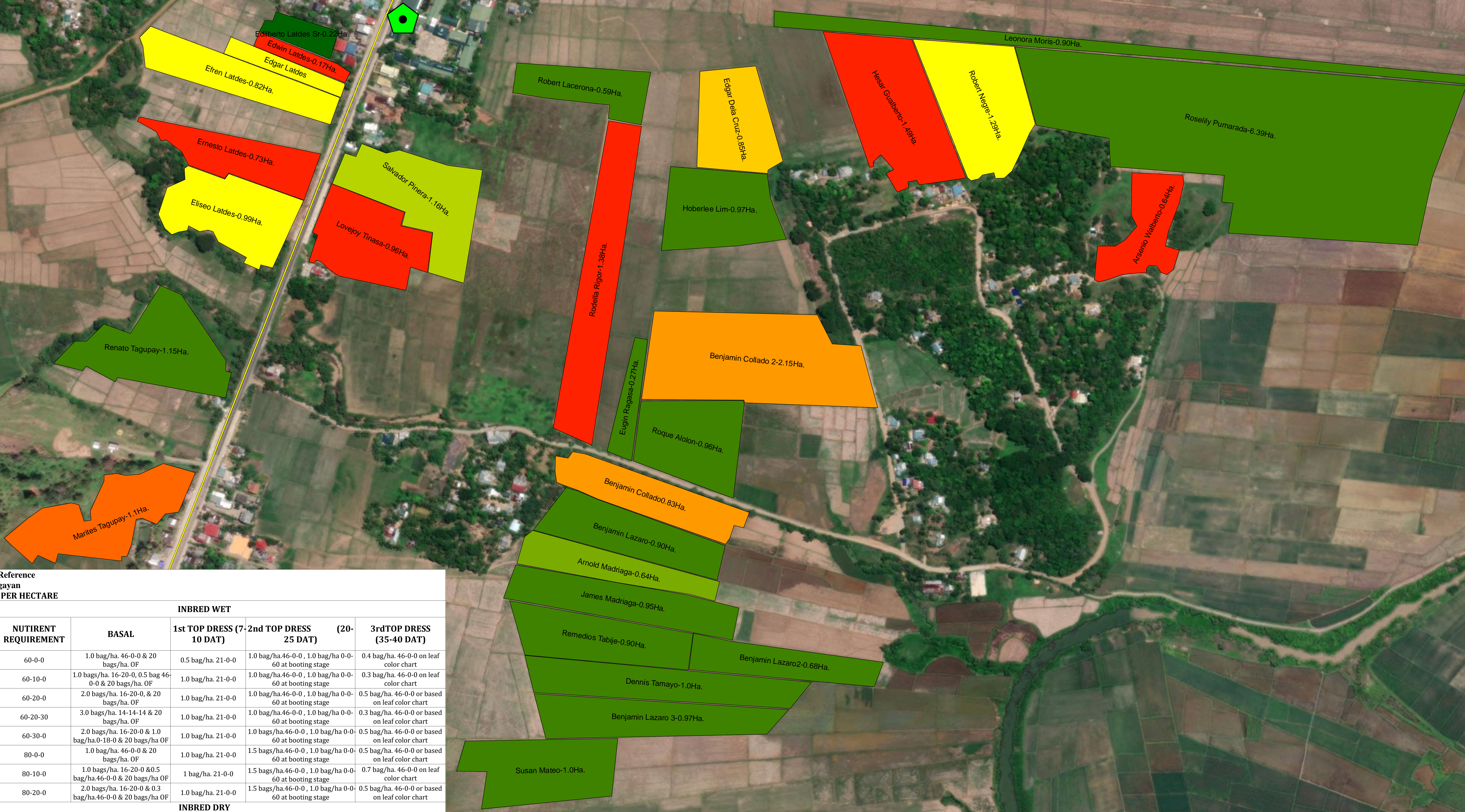
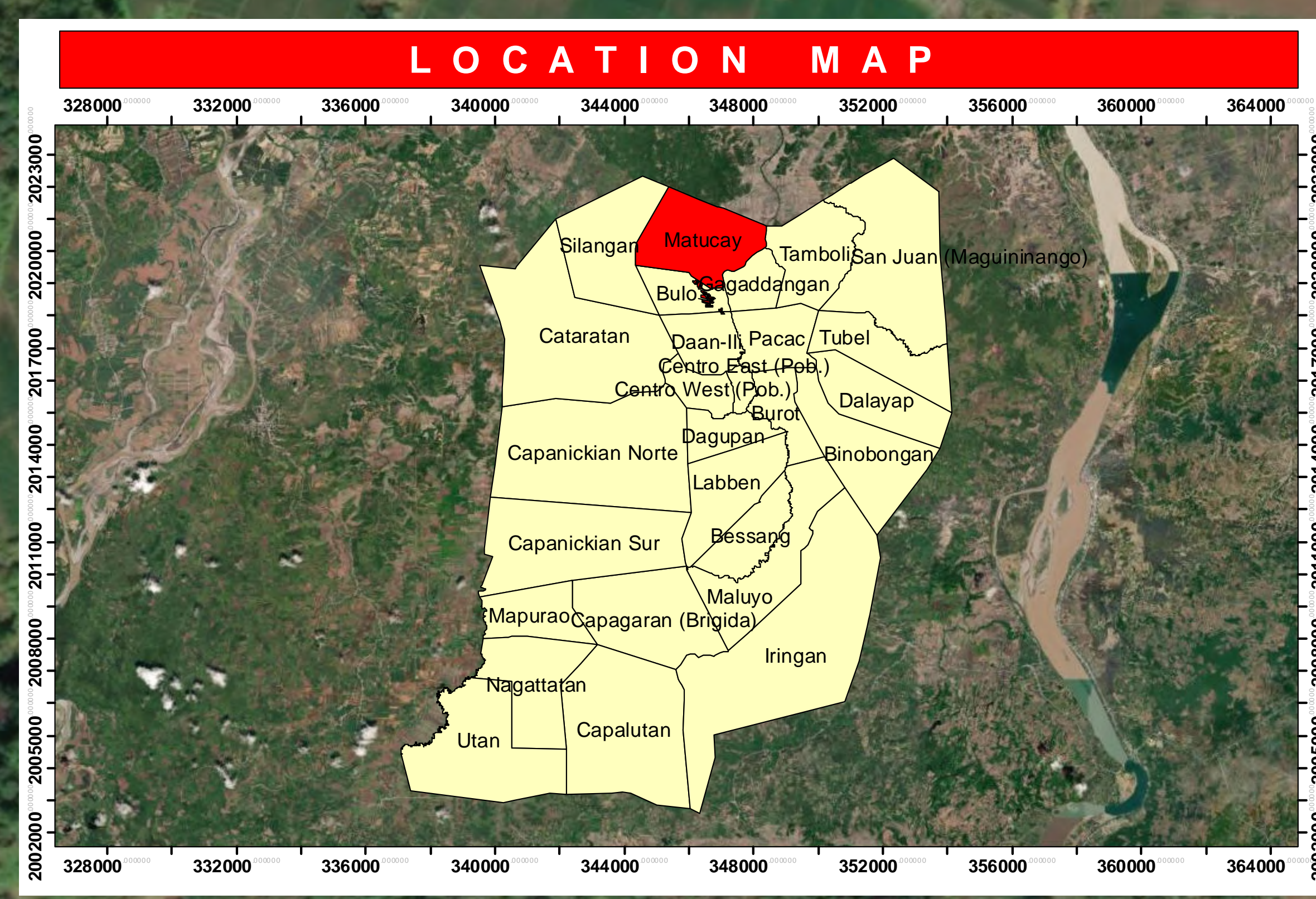


**Legend**

- Barangay Hall
- Roads

| Barangay     | Area(Ha.)    |
|--------------|--------------|
| Matucay      | 34.59        |
| <b>Total</b> | <b>34.59</b> |



**Fertilizer Recommendation Reference**  
 Matucay, Allacapan, Cagayan  
 FERTILIZER RECOMMENDATION PER HECTARE

| HYBRID WET   |                      |  |                          |   | INBRED WET                                      |              |                      |  |                          |  |   |
|--------------|----------------------|--|--------------------------|---|---|--------------|----------------------|--|--------------------------|--|---|
| COLOR CODE   | NUTRIENT REQUIREMENT | BASAL  | 1st TOP DRESS (7-10 DAT) | (2-25 DAT)  | (20-35-40 DAT)                                  | COLOR CODE   | NUTRIENT REQUIREMENT | BASAL  | 1st TOP DRESS (7-10 DAT) | (2-25 DAT)   | (20-35-40 DAT)                                  |
| Green        | 80-0-0               | 1.0 bag/ha. 46-0-0 & 20 bags/ha. OF                        | 1.0 bag/ha. 21-0-0       | 1.5 bags/ha. 46-0-0, 1.0 bag/ha. 0-60 at booting stage  | 0.5 bag/ha. 46-0-0 or based on leaf color chart | Green        | 60-0-0               | 1.0 bag/ha. 46-0-0 & 20 bags/ha. OF                        | 0.5 bag/ha. 21-0-0       | 1.0 bag/ha. 46-0-0, 1.0 bag/ha. 0-60 at booting stage  | 0.4 bag/ha. 46-0-0 or based on leaf color chart |
| Light Green  | 80-10-0              | 1.0 bag/ha. 16-20-0 & 0.5 bag 46-0-0 & 20 bags/ha. OF      | 1.0 bag/ha. 21-0-0       | 1.5 bags/ha. 46-0-0, 1.0 bag/ha. 0-60 at booting stage  | 0.7 bag/ha. 46-0-0 or based on leaf color chart | Light Green  | 60-10-0              | 1.0 bags/ha. 16-20-0 & 0.5 bag 46-0-0 & 20 bags/ha. OF     | 1.0 bag/ha. 21-0-0       | 1.0 bag/ha. 46-0-0, 1.0 bag/ha. 0-60 at booting stage  | 0.3 bag/ha. 46-0-0 or based on leaf color chart |
| Yellow-Green | 80-20-0              | 2.0 bags/ha. 16-20-0, 0.3 bag 46-0-0 & 20 bags/ha. OF      | 1.0 bag/ha. 21-0-0       | 1.5 bags/ha. 46-0-0, 1.0 bag/ha. 0-60 at booting stage  | 0.5 bag/ha. 46-0-0 or based on leaf color chart | Yellow-Green | 60-20-0              | 2.0 bags/ha. 16-20-0 & 20 bags/ha. OF                      | 1.0 bag/ha. 21-0-0       | 1.0 bag/ha. 46-0-0, 1.0 bag/ha. 0-60 at booting stage  | 0.5 bag/ha. 46-0-0 or based on leaf color chart |
| Yellow       | 80-20-30             | 3.0 bags/ha. 14-14-14 & 20 bags/ha. OF                     | 1.0 bag/ha. 21-0-0       | 1.5 bags/ha. 46-0-0, 1.0 bag/ha. 0-60 at booting stage  | 0.6 bag/ha. 46-0-0 or based on leaf color chart | Yellow       | 60-20-30             | 3.0 bags/ha. 14-14-14 & 20 bags/ha. OF                     | 1.0 bag/ha. 21-0-0       | 1.0 bag/ha. 46-0-0, 1.0 bag/ha. 0-60 at booting stage  | 0.3 bag/ha. 46-0-0 or based on leaf color chart |
| Light Orange | 80-30-0              | 1.0 bag/ha. 16-20-0 & 20 bags/ha. OF                       | 1.0 bag/ha. 21-0-0       | 1.5 bags/ha. 46-0-0, 1.0 bag/ha. 0-60 at booting stage  | 0.5 bag/ha. 46-0-0 or based on leaf color chart | Light Orange | 60-30-0              | 2.0 bags/ha. 16-20-0 & 1.0 bag/ha. 46-0-0 & 20 bags/ha. OF | 1.0 bag/ha. 21-0-0       | 1.0 bag/ha. 46-0-0, 1.0 bag/ha. 0-60 at booting stage  | 0.5 bag/ha. 46-0-0 or based on leaf color chart |
| Orange       | 100-0-0              | 1.3 bags/ha. 46-0-0 & 20 bags/ha. OF                       | 1.0 bag/ha. 21-0-0       | 1.6 bags/ha. 46-0-0 & 1.0 bag/ha. 0-60 at booting stage | 1.0 bag/ha. 46-0-0 or based on leaf color chart | Orange       | 80-0-0               | 1.0 bag/ha. 46-0-0 & 20 bags/ha. OF                        | 1.0 bag/ha. 21-0-0       | 1.5 bags/ha. 46-0-0, 1.0 bag/ha. 0-60 at booting stage | 0.5 bag/ha. 46-0-0 or based on leaf color chart |
| Light Red    | 100-10-0             | 1.0 bag/ha. 16-20-0 & 1 bag/ha. 46-0-0 & 20 bags/ha. OF    | 1.0 bag/ha. 21-0-0       | 1.5 bags/ha. 46-0-0, 1.0 bag/ha. 0-60 at booting stage  | 1.0 bag/ha. 46-0-0 or based on leaf color chart | Light Red    | 80-10-0              | 1.0 bags/ha. 16-20-0 & 0.5 bag/ha. 46-0-0 & 20 bags/ha. OF | 1 bag/ha. 21-0-0         | 1.5 bags/ha. 46-0-0, 1.0 bag/ha. 0-60 at booting stage | 0.7 bag/ha. 46-0-0 or based on leaf color chart |
| Red          | 100-20-0             | 2.0 bags/ha. 16-20-0 & 0.5 bag/ha. 46-0-0 & 20 bags/ha. OF | 1.0 bag/ha. 21-0-0       | 1.7 bags/ha. 46-0-0, 1.0 bag/ha. 0-60 at booting stage  | 1.0 bag/ha. 46-0-0 or based on leaf color chart | Red          | 80-20-0              | 2.0 bags/ha. 16-20-0 & 0.3 bag/ha. 46-0-0 & 20 bags/ha. OF | 1.0 bag/ha. 21-0-0       | 1.5 bags/ha. 46-0-0, 1.0 bag/ha. 0-60 at booting stage | 0.5 bag/ha. 46-0-0 or based on leaf color chart |

Prepared by:  
**SOIL FERTILITY MAPPING GROUP**  
 Integrated Laboratory Division/  
 Regional Soil Laboratory

Reviewed by:  
 DONNA AURA G. CALIBUYUT  
 Agriculturist II  
 FEVIE RICA A. ANCHETA, RCh  
 Chem. IV/Chief, RSL

Noted by:  
 GERLYN T. JULUETA, DVM  
 OIC-Chief, Integrated Laboratory Division

Noted by:  
 ROBERTO C. BUSANIA, DVM  
 OIC-Regional Technical Director for Operation and Extension  
 ROSE MARY G. AQUINO  
 Regional Technical Director for Research And Regulations

Approved by:  
 NARCISO A. EDILLO, M.A.ED  
 Regional Executive Director

This Soil Fertility Map was produced under the collaborative undertaking of the Department of Agriculture Regional Field Office No. 02, Regional Soil Laboratory and Local Government Unit, CY 2022 Boundaries are not considered authoritative.

The Department of Agriculture Regional Field Office No. 02 claims the sole responsibility by any omission/errors of this map. Users are requested to inform the DA-RFO 02, Integrated Laboratory Division, Tuguegarao City, Cagayan.

Distributed by:  
 Department of Agriculture, RFO 02  
 Regional Soil Laboratory  
 Soil Fertility Mapping Group  
 © Copyright Reserved 2022