

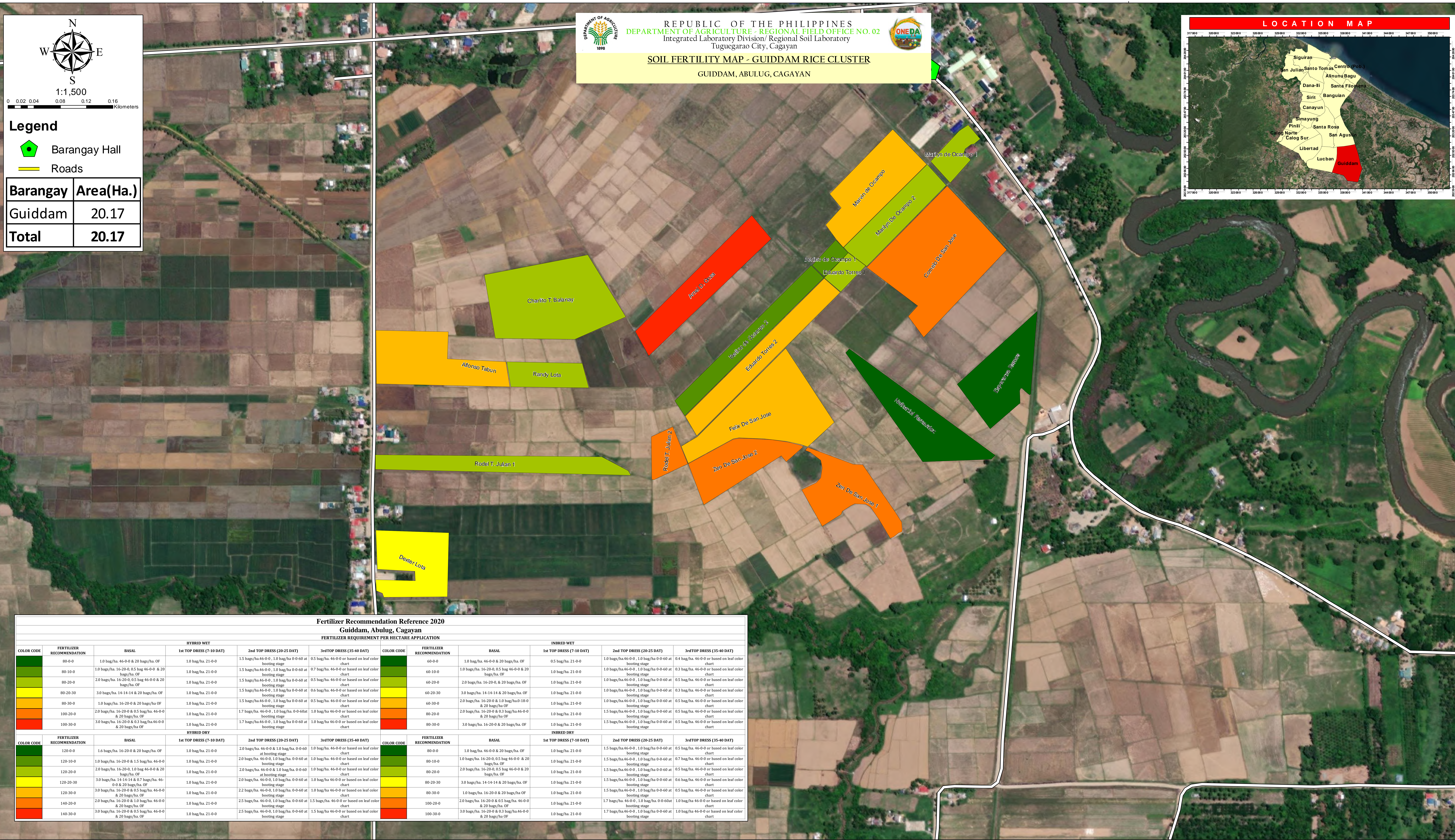
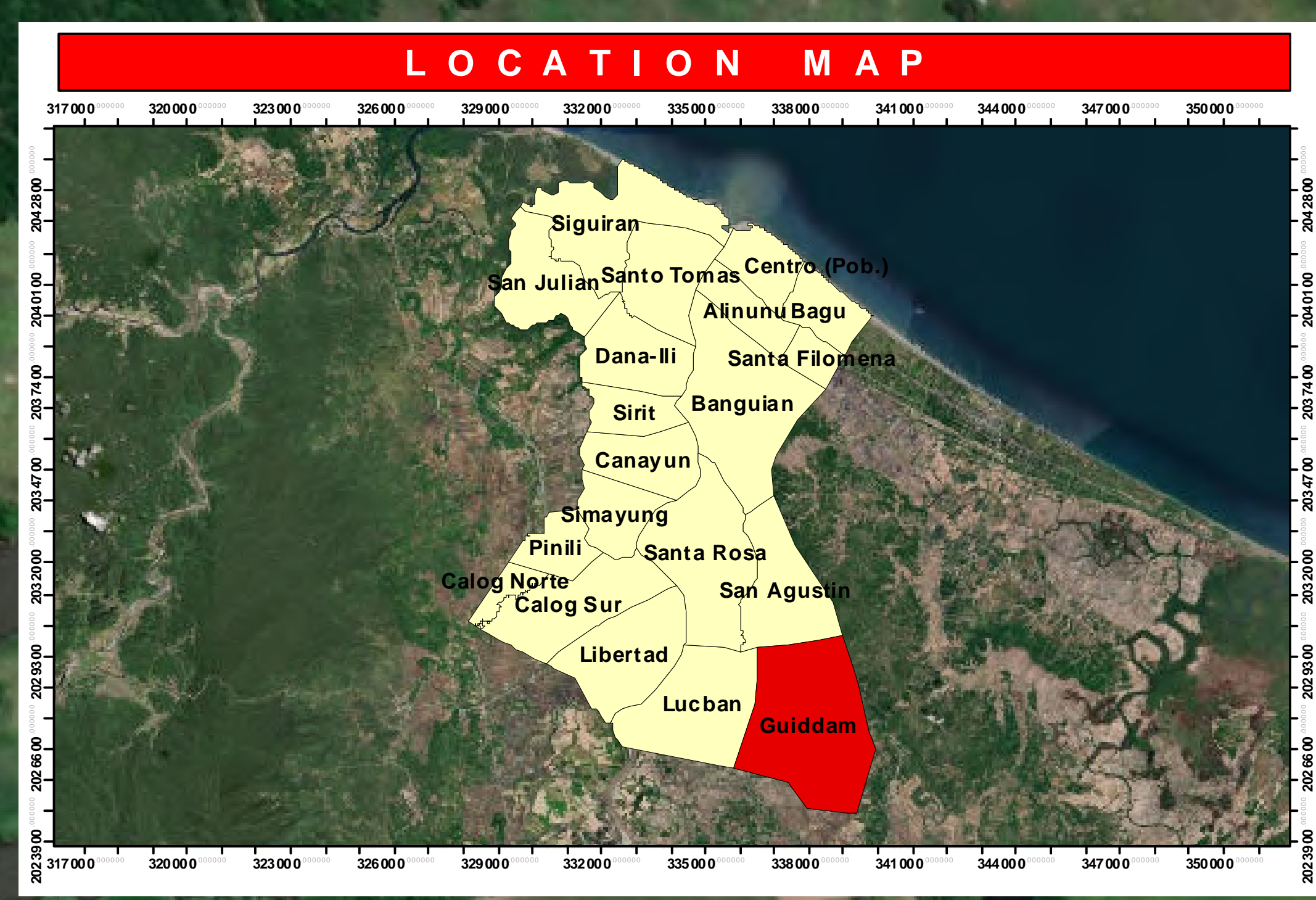
Legend

- Barangay Hall
- Roads

Barangay	Area(Ha.)
Guiddam	20.17
Total	20.17

REPUBLIC OF THE PHILIPPINES
DEPARTMENT OF AGRICULTURE - REGIONAL FIELD OFFICE NO. 02
 Integrated Laboratory Division/ Regional Soil Laboratory
 Tuguegarao City, Cagayan

SOIL FERTILITY MAP - GUIDDAM RICE CLUSTER
 GUIDDAM, ABULUG, CAGAYAN



Fertilizer Recommendation Reference 2020											
Guiddam, Abulug, Cagayan											
FERTILIZER REQUIREMENT PER HECTARE APPLICATION											
HYBRID WET						INBRED WET					
COLOR CODE	FERTILIZER RECOMMENDATION	BASAL	1st TOP DRESS (7-10 DAT)	2nd TOP DRESS (20-25 DAT)	3rd TOP DRESS (35-40 DAT)	COLOR CODE	FERTILIZER RECOMMENDATION	BASAL	1st TOP DRESS (7-10 DAT)	2nd TOP DRESS (20-25 DAT)	3rd TOP DRESS (35-40 DAT)
80-0-0	1.0 bag/ha. 46-0-0 & 20 bags/ha. OF	1.0 bag/ha. 46-0-0 & 20 bags/ha. OF	1.0 bag/ha. 21-0-0	1.5 bags/ha. 46-0-0, 1.0 bag/ha. 0-0-60 at booting stage	0.5 bag/ha. 46-0-0 or based on leaf color chart	60-0-0	1.0 bag/ha. 46-0-0 & 20 bags/ha. OF	1.0 bag/ha. 46-0-0 & 20 bags/ha. OF	0.5 bag/ha. 21-0-0	1.0 bags/ha. 46-0-0, 1.0 bag/ha. 0-0-60 at booting stage	0.4 bag/ha. 46-0-0 or based on leaf color chart
80-10-0	1.0 bags/ha. 16-20-0, 0.5 bag 46-0-0 & 20 bags/ha. OF	1.0 bags/ha. 16-20-0, 0.5 bag 46-0-0 & 20 bags/ha. OF	1.0 bag/ha. 21-0-0	1.5 bags/ha. 46-0-0, 1.0 bag/ha. 0-0-60 at booting stage	0.7 bag/ha. 46-0-0 or based on leaf color chart	60-10-0	1.0 bags/ha. 16-20-0, 0.5 bag 46-0-0 & 20 bags/ha. OF	1.0 bags/ha. 16-20-0, 0.5 bag 46-0-0 & 20 bags/ha. OF	1.0 bag/ha. 21-0-0	1.0 bags/ha. 46-0-0, 1.0 bag/ha. 0-0-60 at booting stage	0.3 bag/ha. 46-0-0 or based on leaf color chart
80-20-0	2.0 bags/ha. 16-20-0, 0.5 bag 46-0-0 & 20 bags/ha. OF	2.0 bags/ha. 16-20-0, 0.5 bag 46-0-0 & 20 bags/ha. OF	1.0 bag/ha. 21-0-0	1.5 bags/ha. 46-0-0, 1.0 bag/ha. 0-0-60 at booting stage	0.5 bag/ha. 46-0-0 or based on leaf color chart	60-20-0	2.0 bags/ha. 16-20-0, 0.5 bag 46-0-0 & 20 bags/ha. OF	2.0 bags/ha. 16-20-0, 0.5 bag 46-0-0 & 20 bags/ha. OF	1.0 bag/ha. 21-0-0	1.0 bags/ha. 46-0-0, 1.0 bag/ha. 0-0-60 at booting stage	0.5 bag/ha. 46-0-0 or based on leaf color chart
80-20-30	3.0 bags/ha. 14-14-14 & 20 bags/ha. OF	3.0 bags/ha. 14-14-14 & 20 bags/ha. OF	1.0 bag/ha. 21-0-0	1.5 bags/ha. 46-0-0, 1.0 bag/ha. 0-0-60 at booting stage	0.6 bag/ha. 46-0-0 or based on leaf color chart	60-20-30	3.0 bags/ha. 14-14-14 & 20 bags/ha. OF	3.0 bags/ha. 14-14-14 & 20 bags/ha. OF	1.0 bag/ha. 21-0-0	1.0 bags/ha. 46-0-0, 1.0 bag/ha. 0-0-60 at booting stage	0.3 bag/ha. 46-0-0 or based on leaf color chart
80-30-0	1.0 bags/ha. 16-20-0 & 20 bags/ha. OF	1.0 bags/ha. 16-20-0 & 20 bags/ha. OF	1.0 bag/ha. 21-0-0	1.5 bags/ha. 46-0-0, 1.0 bag/ha. 0-0-60 at booting stage	0.5 bag/ha. 46-0-0 or based on leaf color chart	60-30-0	2.0 bags/ha. 16-20-0 & 1.0 bag/ha. 0-0-60 & 20 bags/ha. OF	2.0 bags/ha. 16-20-0 & 1.0 bag/ha. 0-0-60 & 20 bags/ha. OF	1.0 bag/ha. 21-0-0	1.0 bags/ha. 46-0-0, 1.0 bag/ha. 0-0-60 at booting stage	0.5 bag/ha. 46-0-0 or based on leaf color chart
100-20-0	2.0 bags/ha. 16-20-0 & 1.5 bag/ha. 46-0-0 & 20 bags/ha. OF	2.0 bags/ha. 16-20-0 & 1.5 bag/ha. 46-0-0 & 20 bags/ha. OF	1.0 bag/ha. 21-0-0	1.7 bags/ha. 46-0-0, 1.0 bag/ha. 0-0-60 at booting stage	1.0 bag/ha. 46-0-0 or based on leaf color chart	80-20-0	2.0 bags/ha. 16-20-0 & 0.3 bag/ha. 46-0-0 & 20 bags/ha. OF	2.0 bags/ha. 16-20-0 & 0.3 bag/ha. 46-0-0 & 20 bags/ha. OF	1.0 bag/ha. 21-0-0	1.5 bags/ha. 46-0-0, 1.0 bag/ha. 0-0-60 at booting stage	0.5 bag/ha. 46-0-0 or based on leaf color chart
100-30-0	3.0 bags/ha. 16-20-0 & 0.3 bag/ha. 46-0-0 & 20 bags/ha. OF	3.0 bags/ha. 16-20-0 & 0.3 bag/ha. 46-0-0 & 20 bags/ha. OF	1.0 bag/ha. 21-0-0	1.7 bags/ha. 46-0-0, 1.0 bag/ha. 0-0-60 at booting stage	1.0 bag/ha. 46-0-0 or based on leaf color chart	80-30-0	3.0 bags/ha. 16-20-0 & 20 bags/ha. OF	3.0 bags/ha. 16-20-0 & 20 bags/ha. OF	1.0 bag/ha. 21-0-0	1.5 bags/ha. 46-0-0, 1.0 bag/ha. 0-0-60 at booting stage	0.5 bag/ha. 46-0-0 or based on leaf color chart
HYBRID DRY						INBRED DRY					
COLOR CODE	FERTILIZER RECOMMENDATION	BASAL	1st TOP DRESS (7-10 DAT)	2nd TOP DRESS (20-25 DAT)	3rd TOP DRESS (35-40 DAT)	COLOR CODE	FERTILIZER RECOMMENDATION	BASAL	1st TOP DRESS (7-10 DAT)	2nd TOP DRESS (20-25 DAT)	3rd TOP DRESS (35-40 DAT)
120-0-0	1.6 bags/ha. 16-20-0 & 20 bags/ha. OF	1.6 bags/ha. 16-20-0 & 20 bags/ha. OF	1.0 bag/ha. 21-0-0	2.0 bags/ha. 46-0-0 & 1.0 bag/ha. 0-0-60 at booting stage	1.0 bag/ha. 46-0-0 or based on leaf color chart	80-0-0	1.0 bag/ha. 46-0-0 & 20 bags/ha. OF	1.0 bag/ha. 46-0-0 & 20 bags/ha. OF	1.0 bag/ha. 21-0-0	1.5 bags/ha. 46-0-0, 1.0 bag/ha. 0-0-60 at booting stage	0.5 bag/ha. 46-0-0 or based on leaf color chart
120-10-0	1.0 bags/ha. 16-20-0 & 1.5 bag/ha. 46-0-0 & 20 bags/ha. OF	1.0 bags/ha. 16-20-0 & 1.5 bag/ha. 46-0-0 & 20 bags/ha. OF	1.0 bag/ha. 21-0-0	2.0 bags/ha. 46-0-0, 1.0 bag/ha. 0-0-60 at booting stage	1.0 bag/ha. 46-0-0 or based on leaf color chart	80-10-0	1.0 bags/ha. 16-20-0, 0.5 bag 46-0-0 & 20 bags/ha. OF	1.0 bags/ha. 16-20-0, 0.5 bag 46-0-0 & 20 bags/ha. OF	1.0 bag/ha. 21-0-0	1.5 bags/ha. 46-0-0, 1.0 bag/ha. 0-0-60 at booting stage	0.7 bag/ha. 46-0-0 or based on leaf color chart
120-20-0	2.0 bags/ha. 16-20-0, 0.5 bag 46-0-0 & 20 bags/ha. OF	2.0 bags/ha. 16-20-0, 0.5 bag 46-0-0 & 20 bags/ha. OF	1.0 bag/ha. 21-0-0	2.0 bags/ha. 46-0-0, 1.0 bag/ha. 0-0-60 at booting stage	1.0 bag/ha. 46-0-0 or based on leaf color chart	80-20-0	2.0 bags/ha. 16-20-0 & 0.5 bag 46-0-0 & 20 bags/ha. OF	2.0 bags/ha. 16-20-0 & 0.5 bag 46-0-0 & 20 bags/ha. OF	1.0 bag/ha. 21-0-0	1.5 bags/ha. 46-0-0, 1.0 bag/ha. 0-0-60 at booting stage	0.5 bag/ha. 46-0-0 or based on leaf color chart
120-20-30	3.0 bags/ha. 14-14-14 & 0.7 bags/ha. 46-0-0 & 20 bags/ha. OF	3.0 bags/ha. 14-14-14 & 0.7 bags/ha. 46-0-0 & 20 bags/ha. OF	1.0 bag/ha. 21-0-0	2.0 bags/ha. 46-0-0, 1.0 bag/ha. 0-0-60 at booting stage	1.0 bag/ha. 46-0-0 or based on leaf color chart	80-20-30	3.0 bags/ha. 14-14-14 & 20 bags/ha. OF	3.0 bags/ha. 14-14-14 & 20 bags/ha. OF	1.0 bag/ha. 21-0-0	1.5 bags/ha. 46-0-0, 1.0 bag/ha. 0-0-60 at booting stage	0.6 bag/ha. 46-0-0 or based on leaf color chart
120-30-0	3.0 bags/ha. 16-20-0 & 0.5 bag/ha. 46-0-0 & 20 bags/ha. OF	3.0 bags/ha. 16-20-0 & 0.5 bag/ha. 46-0-0 & 20 bags/ha. OF	1.0 bag/ha. 21-0-0	2.2 bags/ha. 46-0-0, 1.0 bag/ha. 0-0-60 at booting stage	1.0 bag/ha. 46-0-0 or based on leaf color chart	80-30-0	1.0 bags/ha. 16-20-0 & 20 bags/ha. OF	1.0 bags/ha. 16-20-0 & 20 bags/ha. OF	1.0 bag/ha. 21-0-0	1.5 bags/ha. 46-0-0, 1.0 bag/ha. 0-0-60 at booting stage	0.5 bag/ha. 46-0-0 or based on leaf color chart
140-20-0	2.0 bags/ha. 16-20-0 & 1.0 bag/ha. 46-0-0 & 20 bags/ha. OF	2.0 bags/ha. 16-20-0 & 1.0 bag/ha. 46-0-0 & 20 bags/ha. OF	1.0 bag/ha. 21-0-0	2.5 bags/ha. 46-0-0, 1.0 bag/ha. 0-0-60 at booting stage	1.5 bags/ha. 46-0-0 or based on leaf color chart	100-20-0	2.0 bags/ha. 16-20-0 & 0.5 bag/ha. 46-0-0 & 20 bags/ha. OF	2.0 bags/ha. 16-20-0 & 0.5 bag/ha. 46-0-0 & 20 bags/ha. OF	1.0 bag/ha. 21-0-0	1.7 bags/ha. 46-0-0, 1.0 bag/ha. 0-0-60 at booting stage	1.0 bag/ha. 46-0-0 or based on leaf color chart
140-30-0	3.0 bags/ha. 16-20-0 & 0.5 bag/ha. 46-0-0 & 20 bags/ha. OF	3.0 bags/ha. 16-20-0 & 0.5 bag/ha. 46-0-0 & 20 bags/ha. OF	1.0 bag/ha. 21-0-0	2.5 bags/ha. 46-0-0, 1.0 bag/ha. 0-0-60 at booting stage	1.5 bag/ha. 46-0-0 or based on leaf color chart	100-30-0	3.0 bags/ha. 16-20-0 & 0.3 bag/ha. 46-0-0 & 20 bags/ha. OF	3.0 bags/ha. 16-20-0 & 0.3 bag/ha. 46-0-0 & 20 bags/ha. OF	1.0 bag/ha. 21-0-0	1.7 bags/ha. 46-0-0, 1.0 bag/ha. 0-0-60 at booting stage	1.0 bag/ha. 46-0-0 or based on leaf color chart

Prepared by:

SOIL FERTILITY MAPPING GROUP
 Integrated Laboratory Division/
 Regional Soil Laboratory

Reviewed by:

DONNA AURA B. CALIBUYUT
 Agriculturist II

FEVIE RICA A. ANCHETA, RCh
 Chem. IV/Chief, RSL

Noted by:

GERLY T. ZULUETA, DVM
 OIC-Chief, Integrated Laboratory Division

Noted by:

ROBERTO C. BUSANIA, DVM
 OIC-Regional Technical Director for Operation and Extension

ROSE MARY G. AQUINO
 Regional Technical Director for Research And Regulations

Approved by:

NARCISO A. EDILLO, M.A.ED
 Regional Executive Director

This Soil Fertility Map was produced under the collaborative undertaking of the Department of Agriculture Regional Field Office No. 02, Regional Soil Laboratory and Local Government Unit, CY 2022 Boundaries are not considered authoritative.

The Department of Agriculture Regional Field Office No. 02 claims the sole responsibility for any omissions/errors of this map. Users are requested to inform the DA-RFO 02, Integrated Laboratory Division, Tuguegarao City, Cagayan.

Distributed by:
 Department of Agriculture, RFO 02
 Regional Soil Laboratory
 Soil Fertility Mapping Group
 © Copyright Reserved 2022