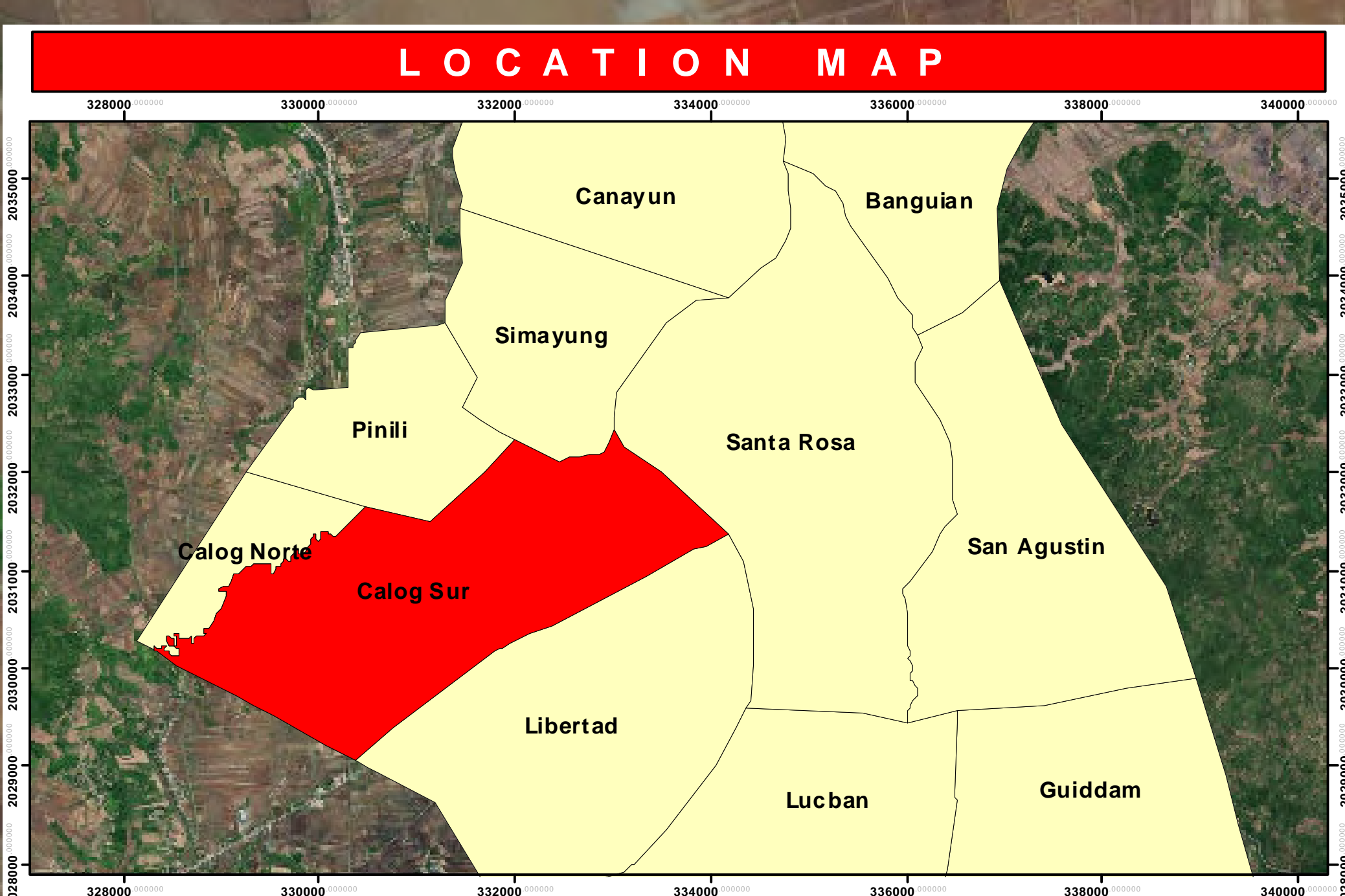


Legend

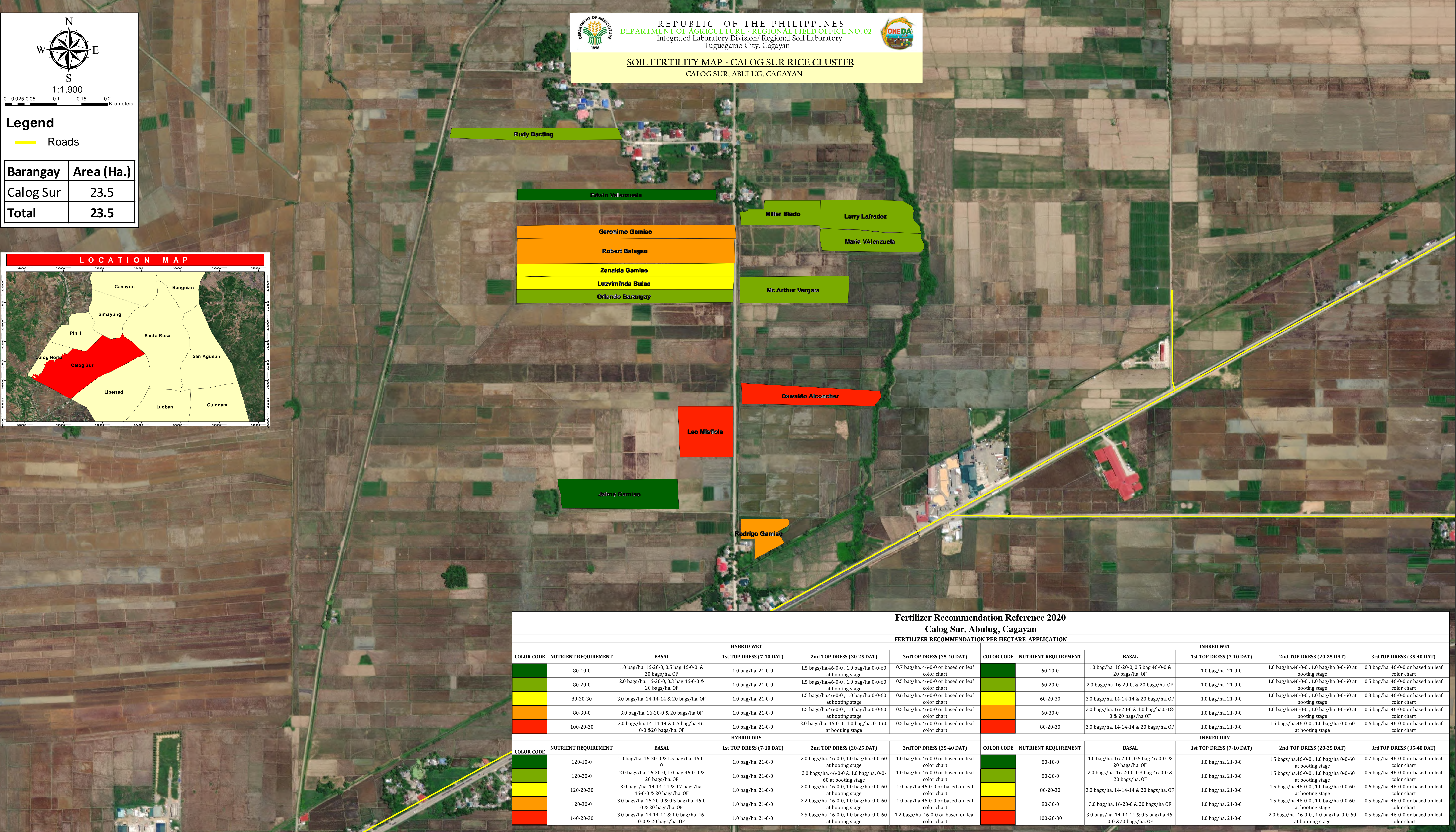
— Roads

Barangay	Area (Ha.)
Calog Sur	23.5
Total	23.5



REPUBLIC OF THE PHILIPPINES
DEPARTMENT OF AGRICULTURE - REGIONAL FIELD OFFICE NO. 02
 Integrated Laboratory Division/ Regional Soil Laboratory
 Tuguegarao City, Cagayan

SOIL FERTILITY MAP - CALOG SUR RICE CLUSTER
CALOG SUR, ABULUG, CAGAYAN



Fertilizer Recommendation Reference 2020
Calog Sur, Abulug, Cagayan

FERTILIZER RECOMMENDATION PER HECTARE APPLICATION

HYBRID WET						INBRED WET					
COLOR CODE	NUTRIENT REQUIREMENT	BASAL	1st TOP DRESS (7-10 DAT)	2nd TOP DRESS (20-25 DAT)	3rd TOP DRESS (35-40 DAT)	COLOR CODE	NUTRIENT REQUIREMENT	BASAL	1st TOP DRESS (7-10 DAT)	2nd TOP DRESS (20-25 DAT)	3rd TOP DRESS (35-40 DAT)
Dark Green	80-10-0	1.0 bag/ha. 16-20-0, 0.5 bag 46-0-0 & 20 bags/ha. OF	1.0 bag/ha. 21-0-0	1.5 bags/ha. 46-0-0, 1.0 bag/ha. 0-0-60 at booting stage	0.7 bag/ha. 46-0-0 or based on leaf color chart	Dark Green	60-10-0	1.0 bag/ha. 16-20-0, 0.5 bag 46-0-0 & 20 bags/ha. OF	1.0 bag/ha. 21-0-0	1.0 bag/ha. 46-0-0, 1.0 bag/ha. 0-0-60 at booting stage	0.3 bag/ha. 46-0-0 or based on leaf color chart
Light Green	80-20-0	2.0 bags/ha. 16-20-0, 0.3 bag 46-0-0 & 20 bags/ha. OF	1.0 bag/ha. 21-0-0	1.5 bags/ha. 46-0-0, 1.0 bag/ha. 0-0-60 at booting stage	0.5 bag/ha. 46-0-0 or based on leaf color chart	Light Green	60-20-0	2.0 bags/ha. 16-20-0, & 20 bags/ha. OF	1.0 bag/ha. 21-0-0	1.0 bag/ha. 46-0-0, 1.0 bag/ha. 0-0-60 at booting stage	0.5 bag/ha. 46-0-0 or based on leaf color chart
Yellow	80-20-30	3.0 bags/ha. 14-14-14 & 20 bags/ha. OF	1.0 bag/ha. 21-0-0	1.5 bags/ha. 46-0-0, 1.0 bag/ha. 0-0-60 at booting stage	0.6 bag/ha. 46-0-0 or based on leaf color chart	Yellow	60-20-30	3.0 bags/ha. 14-14-14 & 20 bags/ha. OF	1.0 bag/ha. 21-0-0	1.0 bag/ha. 46-0-0, 1.0 bag/ha. 0-0-60 at booting stage	0.3 bag/ha. 46-0-0 or based on leaf color chart
Orange	80-30-0	3.0 bag/ha. 16-20-0 & 20 bags/ha. OF	1.0 bag/ha. 21-0-0	1.5 bags/ha. 46-0-0, 1.0 bag/ha. 0-0-60 at booting stage	0.5 bag/ha. 46-0-0 or based on leaf color chart	Orange	60-30-0	2.0 bags/ha. 16-20-0 & 1.0 bag/ha. 0-18-0 & 20 bags/ha. OF	1.0 bag/ha. 21-0-0	1.0 bag/ha. 46-0-0, 1.0 bag/ha. 0-0-60 at booting stage	0.5 bag/ha. 46-0-0 or based on leaf color chart
Red	100-20-30	3.0 bags/ha. 14-14-14 & 0.5 bag/ha. 46-0-0 & 20 bags/ha. OF	1.0 bag/ha. 21-0-0	2.0 bags/ha. 46-0-0, 1.0 bag/ha. 0-0-60 at booting stage	0.5 bag/ha. 46-0-0 or based on leaf color chart	Red	80-20-30	3.0 bags/ha. 14-14-14 & 20 bags/ha. OF	1.0 bag/ha. 21-0-0	1.5 bags/ha. 46-0-0, 1.0 bag/ha. 0-0-60 at booting stage	0.6 bag/ha. 46-0-0 or based on leaf color chart

HYBRID DRY						INBRED DRY					
COLOR CODE	NUTRIENT REQUIREMENT	BASAL	1st TOP DRESS (7-10 DAT)	2nd TOP DRESS (20-25 DAT)	3rd TOP DRESS (35-40 DAT)	COLOR CODE	NUTRIENT REQUIREMENT	BASAL	1st TOP DRESS (7-10 DAT)	2nd TOP DRESS (20-25 DAT)	3rd TOP DRESS (35-40 DAT)
Dark Green	120-10-0	1.0 bag/ha. 16-20-0 & 1.5 bag/ha. 46-0-0	1.0 bag/ha. 21-0-0	2.0 bags/ha. 46-0-0, 1.0 bag/ha. 0-0-60 at booting stage	1.0 bag/ha. 46-0-0 or based on leaf color chart	Dark Green	80-10-0	1.0 bag/ha. 16-20-0, 0.5 bag 46-0-0 & 20 bags/ha. OF	1.0 bag/ha. 21-0-0	1.5 bags/ha. 46-0-0, 1.0 bag/ha. 0-0-60 at booting stage	0.7 bag/ha. 46-0-0 or based on leaf color chart
Light Green	120-20-0	2.0 bags/ha. 16-20-0, 1.0 bag 46-0-0 & 20 bags/ha. OF	1.0 bag/ha. 21-0-0	2.0 bags/ha. 46-0-0 & 1.0 bag/ha. 0-0-60 at booting stage	1.0 bag/ha. 46-0-0 or based on leaf color chart	Light Green	80-20-0	2.0 bags/ha. 16-20-0, 0.3 bag 46-0-0 & 20 bags/ha. OF	1.0 bag/ha. 21-0-0	1.5 bags/ha. 46-0-0, 1.0 bag/ha. 0-0-60 at booting stage	0.5 bag/ha. 46-0-0 or based on leaf color chart
Yellow	120-20-30	3.0 bags/ha. 14-14-14 & 0.7 bags/ha. 46-0-0 & 20 bags/ha. OF	1.0 bag/ha. 21-0-0	2.0 bags/ha. 46-0-0, 1.0 bag/ha. 0-0-60 at booting stage	1.0 bag/ha. 46-0-0 or based on leaf color chart	Yellow	80-20-30	3.0 bags/ha. 14-14-14 & 20 bags/ha. OF	1.0 bag/ha. 21-0-0	1.5 bags/ha. 46-0-0, 1.0 bag/ha. 0-0-60 at booting stage	0.6 bag/ha. 46-0-0 or based on leaf color chart
Orange	120-30-0	3.0 bags/ha. 16-20-0 & 0.5 bag/ha. 46-0-0 & 20 bags/ha. OF	1.0 bag/ha. 21-0-0	2.2 bags/ha. 46-0-0, 1.0 bag/ha. 0-0-60 at booting stage	1.0 bag/ha. 46-0-0 or based on leaf color chart	Orange	80-30-0	3.0 bag/ha. 16-20-0 & 20 bags/ha. OF	1.0 bag/ha. 21-0-0	1.5 bags/ha. 46-0-0, 1.0 bag/ha. 0-0-60 at booting stage	0.5 bag/ha. 46-0-0 or based on leaf color chart
Red	140-20-30	3.0 bags/ha. 14-14-14 & 1.0 bag/ha. 46-0-0 & 20 bags/ha. OF	1.0 bag/ha. 21-0-0	2.5 bags/ha. 46-0-0, 1.0 bag/ha. 0-0-60 at booting stage	1.2 bags/ha. 46-0-0 or based on leaf color chart	Red	100-20-30	3.0 bags/ha. 14-14-14 & 0.5 bag/ha. 46-0-0 & 20 bags/ha. OF	1.0 bag/ha. 21-0-0	2.0 bags/ha. 46-0-0, 1.0 bag/ha. 0-0-60 at booting stage	0.5 bag/ha. 46-0-0 or based on leaf color chart

Prepared by:

SOIL FERTILITY MAPPING GROUP
Integrated Laboratory Division/
Regional Soil Laboratory

Reviewed by:

Donna Aura G. Calibuyut
DONNA AURA G. CALIBUYUT
Agriculturist II

Fevie Rica A. Ancheta
FEVIE RICA A. ANCHETA, RCh
Chem. IV/Chief, RSL

Noted by:

Gerly T. Zulueta
GERLY T. ZULUETA, DVM
OIC-Chief, Integrated Laboratory
Division

Roberto C. Busania
ROBERTO C. BUSANIA, DVM
OIC- Regional Technical Director
for Operation and Extension

Rose Mary G. Aquino
ROSE MARY G. AQUINO
Regional Technical Director
for Research And Regulations

Approved by:

Narciso A. Edillo
NARCISO A. EDILLO, M.A.ED
Regional Executive Director

This Soil Fertility Map was produced under the collaborative undertaking of the Department of Agriculture Regional Field Office No. 02, Regional Soil Laboratory and Local Government Unit, CY 2022 Boundaries are not considered authoritative.

The Department of Agriculture Regional Field Office No. 02 claims the sole responsibility by any omission/errors of this map. Users are requested to inform the DA-RFO 02, Integrated Laboratory Division, Tuguegarao City, Cagayan.

Distributed by:
Department of Agriculture, RFO 02
Regional Soil Laboratory
Soil Fertility Mapping Group
© Copyright Reserved 2022