



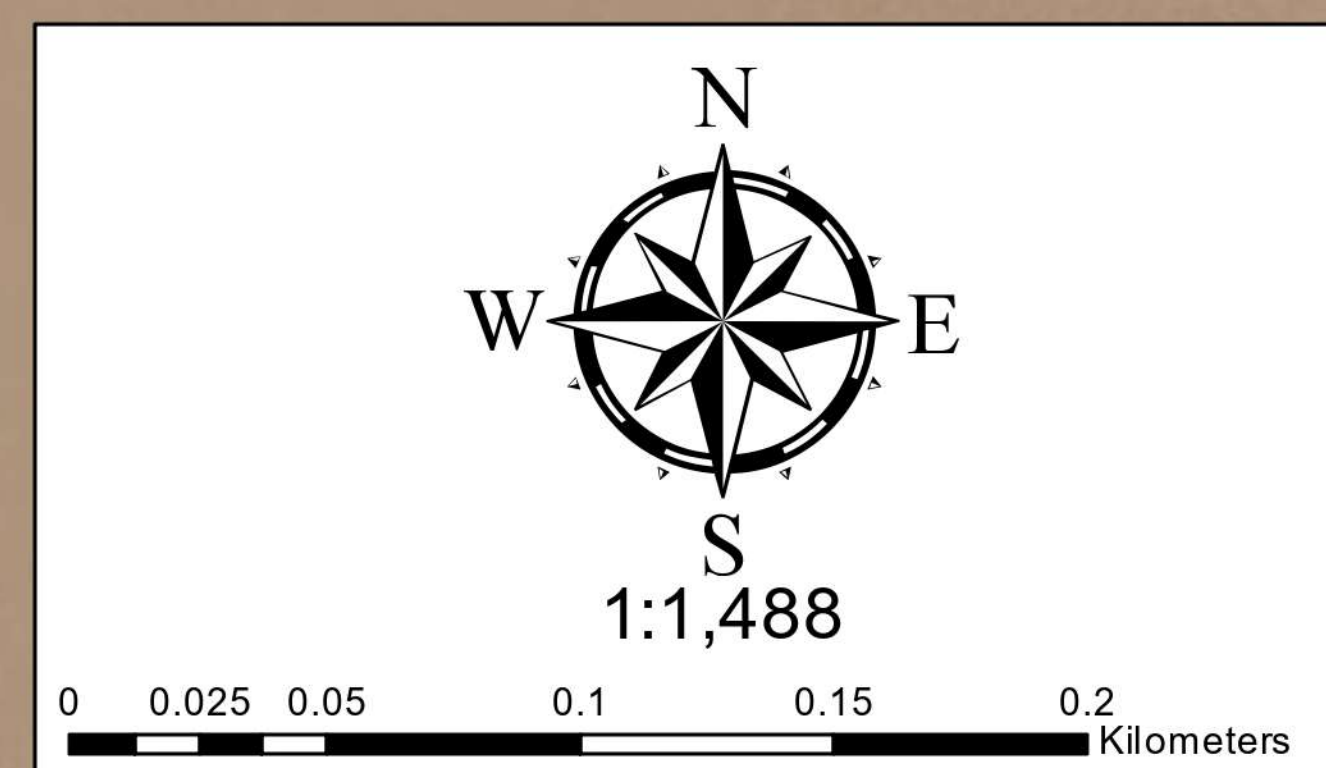
121°39'30"E

121°40'0"E

121°40'30"E



**REPUBLIC OF THE PHILIPPINES**  
**DEPARTMENT OF AGRICULTURE - REGIONAL FIELD OFFICE NO. 02**  
 Integrated Laboratory Division/ Regional Soil Laboratory  
 Tuguegarao City, Cagayan

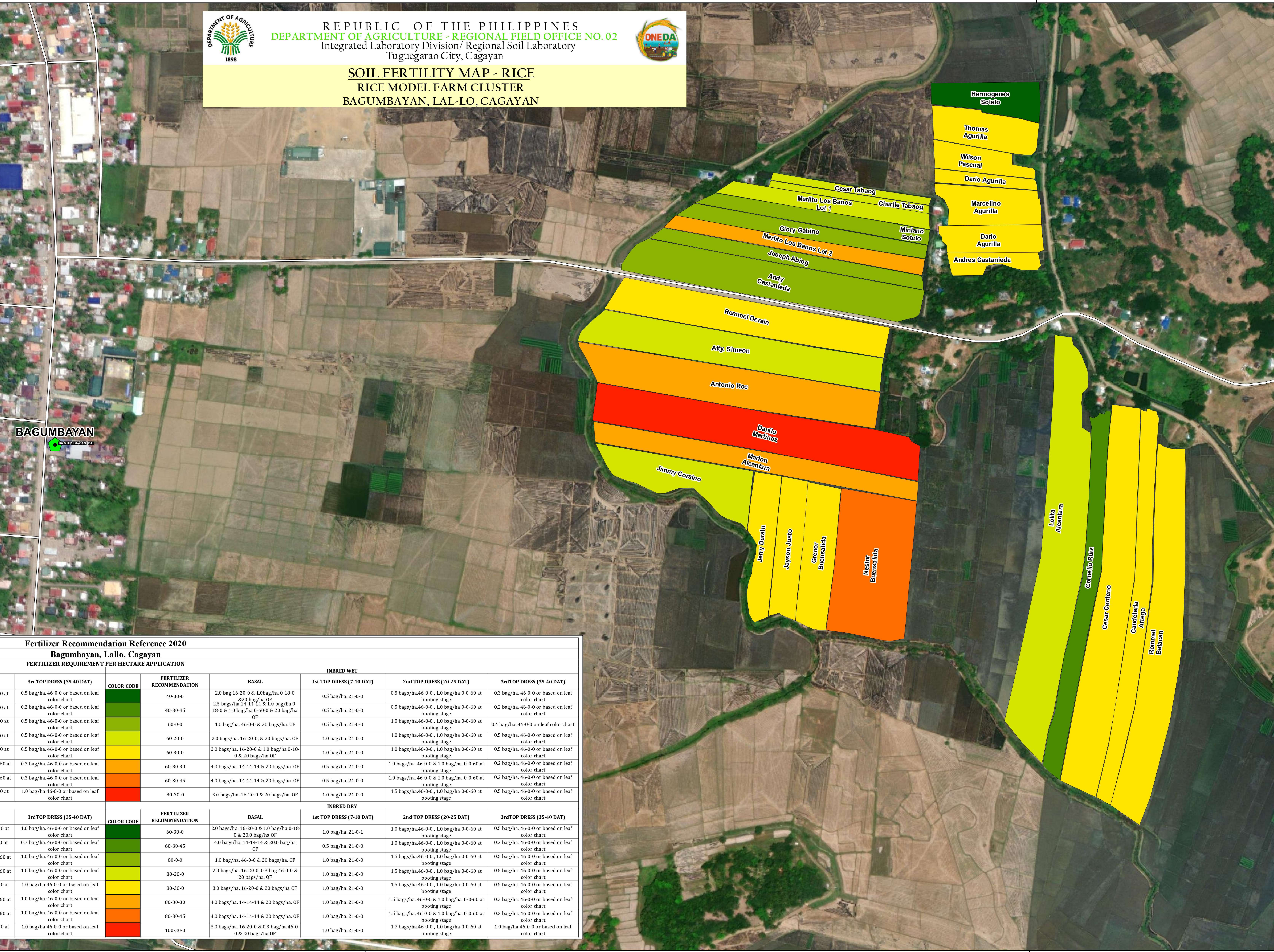
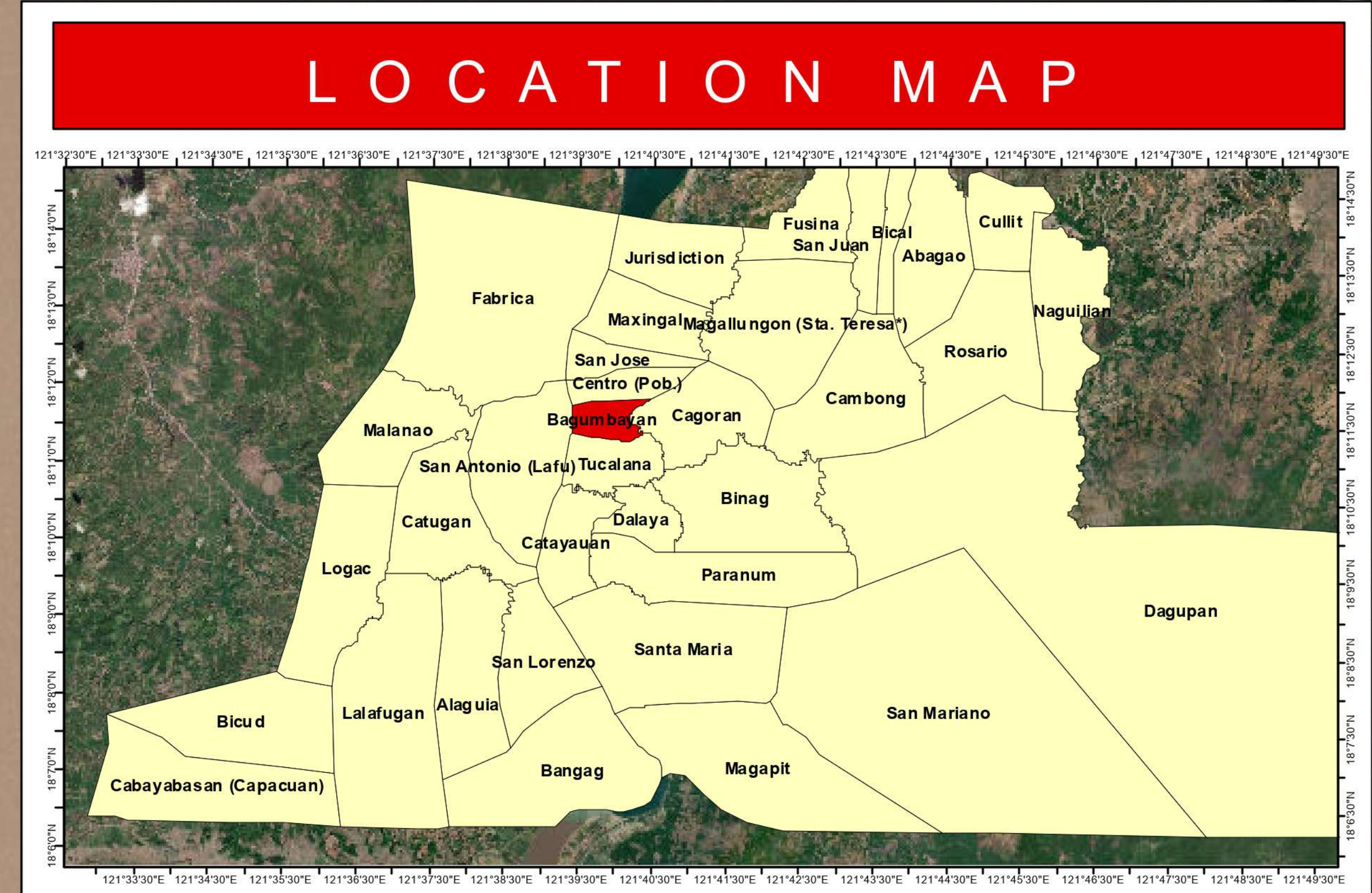
**SOIL FERTILITY MAP - RICE**  
**RICE MODEL FARM CLUSTER**  
**BAGUMBAYAN, LAL-LO, CAGAYAN**



**Legend**

- Barangay Hall
- Roads

<b>Barangay</b>	<b>Area (Ha.)</b>
Bagumbayan	27.72



**Fertilizer Recommendation Reference 2020**  
**Bagumbayan, Lal-lo, Cagayan**  
**FERTILIZER REQUIREMENT PER HECTARE APPLICATION**

HYBRID WET											
COLOR CODE	FERTILIZER RECOMMENDATION	BASAL	1st TOP DRESS (7-10 DAT)	2nd TOP DRESS (20-25 DAT)	3rd TOP DRESS (35-40 DAT)	COLOR CODE	FERTILIZER RECOMMENDATION	BASAL	1st TOP DRESS (7-10 DAT)	2nd TOP DRESS (20-25 DAT)	3rd TOP DRESS (35-40 DAT)
60-30-0	2.0 bags/ha. 16-20-0 & 1.0 bag/ha 0-18-0 & 2.0 bag/ha OF	1.0 bag/ha. 21-0-1	1.0 bags/ha. 46-0-0, 1.0 bag/ha 0-0-60 at booting stage	0.5 bag/ha. 46-0-0 or based on leaf color chart	0.5 bag/ha. 46-0-0 or based on leaf color chart	40-30-0	4.0 bags/ha. 14-14-14 & 2.0 bag/ha OF	2.0 bag/ha. 16-20-0 & 1.0 bag/ha 0-18-0 & 2.0 bag/ha OF	0.5 bag/ha. 21-0-0	0.5 bags/ha. 46-0-0, 1.0 bag/ha 0-0-60 at booting stage	0.3 bag/ha. 46-0-0 or based on leaf color chart
60-30-45	4.0 bags/ha. 14-14-14 & 2.0 bag/ha OF	1.0 bag/ha. 21-0-0	1.0 bags/ha. 46-0-0, 1.0 bag/ha 0-0-60 at booting stage	0.2 bag/ha. 46-0-0 or based on leaf color chart	0.2 bag/ha. 46-0-0 or based on leaf color chart	40-30-45	1.0 bag/ha. 21-0-0	2.5 bags/ha. 14-14-14 & 1.0 bag/ha 0-18-0 & 1.0 bag/ha 0-60-0 & 2.0 bag/ha OF	0.5 bag/ha. 21-0-0	1.0 bags/ha. 46-0-0, 1.0 bag/ha 0-0-60 at booting stage	0.2 bag/ha. 46-0-0 or based on leaf color chart
80-0-0	1.0 bag/ha. 46-0-0 & 2.0 bags/ha. OF	1.0 bag/ha. 21-0-0	1.5 bags/ha. 46-0-0, 1.0 bag/ha 0-0-60 at booting stage	0.5 bag/ha. 46-0-0 or based on leaf color chart	0.5 bag/ha. 46-0-0 or based on leaf color chart	60-0-0	2.0 bags/ha. 16-20-0 & 2.0 bags/ha. OF	1.0 bag/ha. 46-0-0 & 2.0 bags/ha. OF	1.0 bag/ha. 21-0-0	1.0 bags/ha. 46-0-0, 1.0 bag/ha 0-0-60 at booting stage	0.4 bag/ha. 46-0-0 or based on leaf color chart
80-20-0	2.0 bags/ha. 16-20-0, 0.3 bag 46-0-0 & 2.0 bags/ha. OF	1.0 bag/ha. 21-0-0	1.5 bags/ha. 46-0-0, 1.0 bag/ha 0-0-60 at booting stage	0.5 bag/ha. 46-0-0 or based on leaf color chart	0.5 bag/ha. 46-0-0 or based on leaf color chart	60-20-0	2.0 bags/ha. 16-20-0 & 2.0 bags/ha. OF	2.0 bags/ha. 16-20-0 & 1.0 bag/ha 0-18-0 & 2.0 bags/ha OF	1.0 bag/ha. 21-0-0	1.0 bags/ha. 46-0-0, 1.0 bag/ha 0-0-60 at booting stage	0.5 bag/ha. 46-0-0 or based on leaf color chart
80-30-0	1.0 bag/ha. 16-20-0 & 2.0 bags/ha OF	1.0 bag/ha. 21-0-0	1.5 bags/ha. 46-0-0, 1.0 bag/ha 0-0-60 at booting stage	0.5 bag/ha. 46-0-0 or based on leaf color chart	0.5 bag/ha. 46-0-0 or based on leaf color chart	60-30-0	2.0 bags/ha. 16-20-0 & 1.0 bag/ha 0-18-0 & 2.0 bags/ha OF	1.0 bag/ha. 21-0-0	1.0 bag/ha. 21-0-0	1.0 bags/ha. 46-0-0, 1.0 bag/ha 0-0-60 at booting stage	0.5 bag/ha. 46-0-0 or based on leaf color chart
80-30-30	4.0 bags/ha. 14-14-14 & 2.0 bags/ha. OF	1.0 bag/ha. 21-0-0	1.5 bags/ha. 46-0-0 & 1.0 bag/ha. 0-0-60 at booting stage	0.3 bag/ha. 46-0-0 or based on leaf color chart	0.3 bag/ha. 46-0-0 or based on leaf color chart	60-30-30	4.0 bags/ha. 14-14-14 & 2.0 bags/ha. OF	1.0 bag/ha. 21-0-0	1.0 bag/ha. 21-0-0	1.0 bags/ha. 46-0-0 & 1.0 bag/ha. 0-0-60 at booting stage	0.2 bag/ha. 46-0-0 or based on leaf color chart
80-30-45	4.0 bags/ha. 14-14-14 & 2.0 bags/ha. OF	1.0 bag/ha. 21-0-0	1.5 bags/ha. 46-0-0 & 1.0 bag/ha. 0-0-60 at booting stage	0.3 bag/ha. 46-0-0 or based on leaf color chart	0.3 bag/ha. 46-0-0 or based on leaf color chart	60-30-45	4.0 bags/ha. 14-14-14 & 2.0 bags/ha. OF	1.0 bag/ha. 21-0-0	1.0 bag/ha. 21-0-0	1.0 bags/ha. 46-0-0 & 1.0 bag/ha. 0-0-60 at booting stage	0.2 bag/ha. 46-0-0 or based on leaf color chart
100-30-0	3.0 bags/ha. 16-20-0 & 0.3 bag/ha. 46-0-0 & 2.0 bags/ha OF	1.0 bag/ha. 21-0-0	1.7 bags/ha. 46-0-0, 1.0 bag/ha 0-0-60 at booting stage	1.0 bag/ha. 46-0-0 or based on leaf color chart	1.0 bag/ha. 46-0-0 or based on leaf color chart	80-30-0	3.0 bags/ha. 16-20-0 & 2.0 bags/ha. OF	1.0 bag/ha. 21-0-0	1.0 bag/ha. 21-0-0	1.5 bags/ha. 46-0-0, 1.0 bag/ha 0-0-60 at booting stage	0.5 bag/ha. 46-0-0 or based on leaf color chart

HYBRID DRY											
COLOR CODE	FERTILIZER RECOMMENDATION	BASAL	1st TOP DRESS (7-10 DAT)	2nd TOP DRESS (20-25 DAT)	3rd TOP DRESS (35-40 DAT)	COLOR CODE	FERTILIZER RECOMMENDATION	BASAL	1st TOP DRESS (7-10 DAT)	2nd TOP DRESS (20-25 DAT)	3rd TOP DRESS (35-40 DAT)
100-30-0	3.0 bags/ha. 16-20-0, 0.3 bag 46-0-0 & 2.0 bags/ha. OF	1.0 bag/ha. 21-0-0	1.7 bags/ha. 46-0-0, 1.0 bag/ha 0-0-60 at booting stage	1.0 bag/ha. 46-0-0 or based on leaf color chart	1.0 bag/ha. 46-0-0 or based on leaf color chart	60-30-0	2.0 bags/ha. 16-20-0 & 1.0 bag/ha 0-18-0 & 2.0 bag/ha OF	1.0 bag/ha. 21-0-1	1.0 bag/ha. 21-0-1	1.0 bags/ha. 46-0-0, 1.0 bag/ha 0-0-60 at booting stage	0.5 bag/ha. 46-0-0 or based on leaf color chart
100-30-45	4.0 bags/ha. 14-14-14 & 2.0 bags OF	1.0 bag/ha. 21-0-0	2.0 bag/ha. 46-0-0, 2.0 bag/ha. 0-0-60 at booting stage	0.7 bag/ha. 46-0-0 or based on leaf color chart	0.7 bag/ha. 46-0-0 or based on leaf color chart	60-30-45	4.0 bags/ha. 14-14-14 & 2.0 bag/ha OF	0.5 bag/ha. 21-0-0	0.5 bag/ha. 21-0-0	1.0 bags/ha. 46-0-0, 1.0 bag/ha 0-0-60 at booting stage	0.2 bag/ha. 46-0-0 or based on leaf color chart
120-0-0	1.6 bags/ha. 46-0-0 & 2.0 bags/ha. OF	1.0 bag/ha. 21-0-0	2.0 bags/ha. 46-0-0 & 1.0 bag/ha. 0-0-60 at booting stage	1.0 bag/ha. 46-0-0 or based on leaf color chart	1.0 bag/ha. 46-0-0 or based on leaf color chart	80-0-0	1.0 bag/ha. 46-0-0 & 2.0 bags/ha. OF	1.0 bag/ha. 21-0-0	1.0 bag/ha. 21-0-0	1.5 bags/ha. 46-0-0, 1.0 bag/ha 0-0-60 at booting stage	0.5 bag/ha. 46-0-0 or based on leaf color chart
120-20-0	2.0 bags/ha. 16-20-0 & 1.0 bag 46-0-0 & 2.0 bags/ha. OF	1.0 bag/ha. 21-0-0	2.0 bags/ha. 46-0-0 & 1.0 bag/ha. 0-0-60 at booting stage	1.0 bag/ha. 46-0-0 or based on leaf color chart	1.0 bag/ha. 46-0-0 or based on leaf color chart	80-20-0	2.0 bags/ha. 16-20-0, 0.3 bag 46-0-0 & 2.0 bags/ha. OF	1.0 bag/ha. 21-0-0	1.0 bag/ha. 21-0-0	1.5 bags/ha. 46-0-0, 1.0 bag/ha 0-0-60 at booting stage	0.5 bag/ha. 46-0-0 or based on leaf color chart
120-30-0	3.0 bags/ha. 16-20-0 & 0.5 bag/ha. 46-0-0 & 2.0 bags/ha. OF	1.0 bag/ha. 21-0-0	2.2 bags/ha. 46-0-0 & 1.0 bag/ha. 0-0-60 at booting stage	1.0 bag/ha. 46-0-0 or based on leaf color chart	1.0 bag/ha. 46-0-0 or based on leaf color chart	80-30-0	3.0 bags/ha. 16-20-0 & 2.0 bags/ha. OF	1.0 bag/ha. 21-0-0	1.0 bag/ha. 21-0-0	1.5 bags/ha. 46-0-0, 1.0 bag/ha 0-0-60 at booting stage	0.5 bag/ha. 46-0-0 or based on leaf color chart
120-30-30	4.0 bags/ha. 14-14-14 & 0.5 bag/ha. 46-0-0 & 2.0 bags/ha. OF	1.0 bag/ha. 21-0-0	2.0 bags/ha. 46-0-0 & 1.0 bag/ha. 0-0-60 at booting stage	1.0 bag/ha. 46-0-0 or based on leaf color chart	1.0 bag/ha. 46-0-0 or based on leaf color chart	80-30-30	4.0 bags/ha. 14-14-14 & 2.0 bags/ha. OF	1.0 bag/ha. 21-0-0	1.0 bag/ha. 21-0-0	1.5 bags/ha. 46-0-0 & 1.0 bag/ha. 0-0-60 at booting stage	0.3 bag/ha. 46-0-0 or based on leaf color chart
120-30-45	4.0 bags/ha. 14-14-14 & 0.5 bag/ha. 46-0-0 & 2.0 bags/ha. OF	1.0 bag/ha. 21-0-0	2.0 bags/ha. 46-0-0 & 1.0 bag/ha. 0-0-60 at booting stage	1.0 bag/ha. 46-0-0 or based on leaf color chart	1.0 bag/ha. 46-0-0 or based on leaf color chart	80-30-45	4.0 bags/ha. 14-14-14 & 2.0 bags/ha. OF	1.0 bag/ha. 21-0-0	1.0 bag/ha. 21-0-0	1.5 bags/ha. 46-0-0 & 1.0 bag/ha. 0-0-60 at booting stage	0.3 bag/ha. 46-0-0 or based on leaf color chart
120-30-0	3.0 bags/ha. 16-20-0 & 0.5 bag/ha. 46-0-0 & 2.0 bags/ha. OF	1.0 bag/ha. 21-0-0	2.2 bags/ha. 46-0-0 & 1.0 bag/ha. 0-0-60 at booting stage	1.0 bag/ha. 46-0-0 or based on leaf color chart	1.0 bag/ha. 46-0-0 or based on leaf color chart	100-30-0	3.0 bags/ha. 16-20-0 & 0.3 bag/ha. 46-0-0 & 2.0 bags/ha OF	1.0 bag/ha. 21-0-0	1.0 bag/ha. 21-0-0	1.7 bags/ha. 46-0-0, 1.0 bag/ha 0-0-60 at booting stage	1.0 bag/ha. 46-0-0 or based on leaf color chart

121°39'30"E


121°40'0"E


121°40'30"E

Prepared by:


**SOIL FERTILITY MAPPING GROUP**  
Integrated Laboratory Division/  
Regional Soil Laboratory

Reviewed by:


  
**DONNA AURA G. CALIBUYOT**  
Agriculturist II


  
**FEVIE RICA A. ANCHETA, RCh**  
Chem. IV/Chief, RSL

Noted by:


  
**GERLY T. ZULUETA, DVM**  
OIC-Chief, Integrated Laboratory  
Division

Noted by:

  
**ROBERTO C. BUSANIA, DVM**  
OIC- Regional Technical Director  
for Operation and Extension

  
**ROSE MARY G. AQUINO**  
Regional Technical Director  
for Research And Regulations

Approved by:

  
**NARCISO A. EDILLO, M.A.Ed**  
Regional Executive Director

This Soil Fertility Map was produced under the collaborative undertaking of the Department of Agriculture Regional Field Office No. 02, Regional Soil Laboratory and Local Government Unit, CY 2022 Boundaries are not considered authoritative.

The Department of Agriculture Regional Field Office No. 02 claims the sole responsibility for any omission/errors of this map. Users are requested to inform the DA-RFO 02, Integrated Laboratory Division, Tuguegarao City, Cagayan.

Distributed by:  
Department of Agriculture, RFO 02  
Regional Soil Laboratory  
Soil Fertility Mapping Group  
© Copyright Reserved 2022