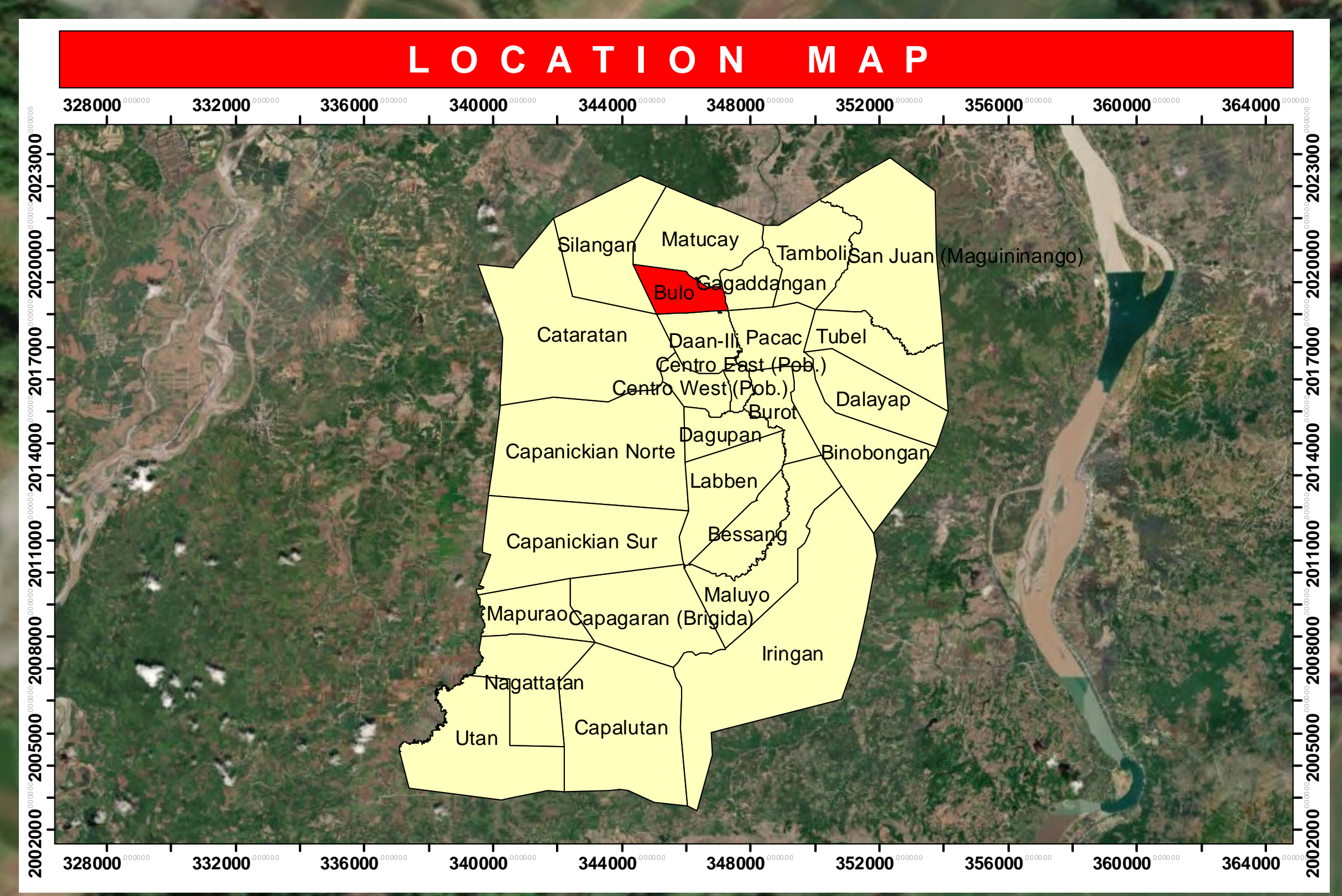


Legend

- Barangay Hall
- Roads

Barangay	Area(Ha.)
Bulo	16.5
Total	16.5



Fertilizer Recommendation Reference
Bulo, Allacapan, Cagayan
 FERTILIZER REQUIREMENT PER HECTARE APPLICATION

COLOR CODE	FERTILIZER RECOMMENDATION	HYBRID WET			COLOR CODE	FERTILIZER RECOMMENDATION	INBRED WET		
		BASAL	1st TOP DRESS (7-10 DAT)	2nd TOP DRESS (20-25 DAT)			BASAL	1st TOP DRESS (7-10 DAT)	2nd TOP DRESS (20-25 DAT)
80-0-0	1.0 bag/ha. 46-0-0 & 20 bags/ha. OF	1.0 bag/ha. 46-0-0 & 20 bags/ha. OF	1.0 bag/ha. 21-0-0	1.5 bags/ha. 46-0-0, 1.0 bag/ha. 0-0-60 at booting stage	60-0-0	1.0 bag/ha. 46-0-0 & 20 bags/ha. OF	0.5 bag/ha. 21-0-0	1.0 bags/ha. 46-0-0, 1.0 bag/ha. 0-0-60 at booting stage	0.4 bag/ha. 46-0-0 on leaf color chart
80-10-0	1.0 bags/ha. 16-20-0, 0.5 bag/ha. 46-0-0 & 20 bags/ha. OF	1.0 bags/ha. 16-20-0, 0.5 bag/ha. 46-0-0 & 20 bags/ha. OF	1.0 bag/ha. 21-0-0	1.5 bags/ha. 46-0-0, 1.0 bag/ha. 0-0-60 at booting stage	60-10-0	1.0 bags/ha. 16-20-0, 0.5 bag/ha. 46-0-0 & 20 bags/ha. OF	1.0 bag/ha. 21-0-0	1.0 bags/ha. 46-0-0, 1.0 bag/ha. 0-0-60 at booting stage	0.3 bag/ha. 46-0-0 on leaf color chart
80-10-30	2.0 bags/ha. 14-14-14, 0.5 bag/ha. 46-0-0 & 20 bags/ha. OF	2.0 bags/ha. 14-14-14, 0.5 bag/ha. 46-0-0 & 20 bags/ha. OF	1.0 bag/ha. 21-0-0	1.5 bags/ha. 46-0-0, 1.0 bag/ha. 0-0-60 at booting stage	60-10-30	2.0 bags/ha. 14-14-14 & 20 bags/ha. OF	1.0 bag/ha. 21-0-0	1.0 bags/ha. 46-0-0, 1.0 bag/ha. 0-0-60 at booting stage	0.5 bag/ha. 46-0-0 or based on leaf color chart
80-10-45	2.0 bags/ha. 16-20-0, 0.5 bag/ha. 46-0-0 & 20 bags/ha. OF	2.0 bags/ha. 16-20-0, 0.5 bag/ha. 46-0-0 & 20 bags/ha. OF	1.0 bag/ha. 21-0-0	1.5 bags/ha. 46-0-0, 1.0 bag/ha. 0-0-60 at booting stage	60-10-45	2.0 bags/ha. 14-14-14 & 20 bags/ha. OF	1.0 bag/ha. 21-0-0	1.0 bags/ha. 46-0-0, 1.0 bag/ha. 0-0-60 at booting stage	0.5 bag/ha. 46-0-0 or based on leaf color chart
80-20-0	2.0 bags/ha. 14-14-14 & 0.5 bag/ha. 46-0-0 & 20 bags/ha. OF	2.0 bags/ha. 14-14-14 & 0.5 bag/ha. 46-0-0 & 20 bags/ha. OF	1.0 bag/ha. 21-0-0	1.5 bags/ha. 46-0-0, 1.0 bag/ha. 0-0-60 at booting stage	60-20-0	2.0 bags/ha. 16-20-0, 0.5 bag/ha. 46-0-0 & 20 bags/ha. OF	1.0 bag/ha. 21-0-0	1.0 bags/ha. 46-0-0, 1.0 bag/ha. 0-0-60 at booting stage	0.5 bag/ha. 46-0-0 or based on leaf color chart
80-20-30	3.0 bags/ha. 14-14-14 & 20 bags/ha. OF	3.0 bags/ha. 14-14-14 & 20 bags/ha. OF	1.0 bag/ha. 21-0-0	1.5 bags/ha. 46-0-0, 1.0 bag/ha. 0-0-60 at booting stage	60-20-30	3.0 bags/ha. 14-14-14 & 20 bags/ha. OF	1.0 bag/ha. 21-0-0	1.0 bags/ha. 46-0-0, 1.0 bag/ha. 0-0-60 at booting stage	0.5 bag/ha. 46-0-0 or based on leaf color chart
80-30-0	1.0 bags/ha. 16-20-0 & 20 bags/ha. OF	1.0 bags/ha. 16-20-0 & 20 bags/ha. OF	1.0 bag/ha. 21-0-0	1.5 bags/ha. 46-0-0, 1.0 bag/ha. 0-0-60 at booting stage	60-30-0	2.0 bags/ha. 16-20-0 & 1.0 bag/ha. 0-0-60 & 20 bags/ha. OF	1.0 bag/ha. 21-0-0	1.0 bags/ha. 46-0-0, 1.0 bag/ha. 0-0-60 at booting stage	0.5 bag/ha. 46-0-0 or based on leaf color chart
80-30-30	4.0 bags/ha. 14-14-14 & 20 bags/ha. OF	4.0 bags/ha. 14-14-14 & 20 bags/ha. OF	1.0 bag/ha. 21-0-0	1.5 bags/ha. 46-0-0, 1.0 bag/ha. 0-0-60 at booting stage	60-30-30	4.0 bags/ha. 14-14-14 & 20 bags/ha. OF	0.5 bag/ha. 21-0-0	1.0 bags/ha. 46-0-0 & 1.0 bag/ha. 0-0-60 at booting stage	0.2 bag/ha. 46-0-0 or based on leaf color chart
80-30-45	4.0 bags/ha. 14-14-14 & 20 bags/ha. OF	4.0 bags/ha. 14-14-14 & 20 bags/ha. OF	1.0 bag/ha. 21-0-0	1.5 bags/ha. 46-0-0, 1.0 bag/ha. 0-0-60 at booting stage	60-30-45	4.0 bags/ha. 14-14-14 & 20 bags/ha. OF	1.0 bag/ha. 21-0-0	1.0 bags/ha. 46-0-0 & 1.0 bag/ha. 0-0-60 at booting stage	0.2 bag/ha. 46-0-0 or based on leaf color chart
100-10-0	1.0 bags/ha. 16-20-0 & 1 bag/ha. 46-0-0 & 20 bags/ha. OF	1.0 bags/ha. 16-20-0 & 1 bag/ha. 46-0-0 & 20 bags/ha. OF	1.0 bag/ha. 21-0-0	1.5 bags/ha. 46-0-0, 1.0 bag/ha. 0-0-60 at booting stage	80-10-0	1.0 bags/ha. 16-20-0 & 0.5 bag/ha. 46-0-0 & 20 bags/ha. OF	1 bag/ha. 21-0-0	1.5 bags/ha. 46-0-0, 1.0 bag/ha. 0-0-60 at booting stage	0.7 bag/ha. 46-0-0 on leaf color chart
100-10-30	2.0 bags/ha. 14-14-14, 0.70 bag/ha. 46-0-0 & 20 bags/ha. OF	2.0 bags/ha. 14-14-14, 0.70 bag/ha. 46-0-0 & 20 bags/ha. OF	1.0 bag/ha. 21-0-0	2.0 bags/ha. 46-0-0, 1.0 bag/ha. 0-0-60 at booting stage	80-10-30	2.0 bags/ha. 14-14-14, 0.5 bag/ha. 46-0-0 & 20 bags/ha. OF	1.0 bag/ha. 21-0-0	1.5 bags/ha. 46-0-0, 1.0 bag/ha. 0-0-60 at booting stage	0.4 bag/ha. 46-0-0 or based on leaf color chart
100-20-0	2.0 bags/ha. 16-20-0 & 0.5 bag/ha. 46-0-0 & 20 bags/ha. OF	2.0 bags/ha. 16-20-0 & 0.5 bag/ha. 46-0-0 & 20 bags/ha. OF	1.0 bag/ha. 21-0-0	1.7 bags/ha. 46-0-0, 1.0 bag/ha. 0-0-60 at booting stage	80-20-0	2.0 bags/ha. 16-20-0 & 0.3 bag/ha. 46-0-0 & 20 bags/ha. OF	1.0 bag/ha. 21-0-0	1.5 bags/ha. 46-0-0, 1.0 bag/ha. 0-0-60 at booting stage	0.5 bag/ha. 46-0-0 or based on leaf color chart


COLOR CODE	FERTILIZER RECOMMENDATION	HYBRID DRY			COLOR CODE	FERTILIZER RECOMMENDATION	INBRED DRY		
		BASAL	1st TOP DRESS (7-10 DAT)	2nd TOP DRESS (20-25 DAT)			BASAL	1st TOP DRESS (7-10 DAT)	2nd TOP DRESS (20-25 DAT)
120-0-0	1.6 bag/ha. 16-20-0 & 20 bags/ha. OF	1.6 bag/ha. 16-20-0 & 20 bags/ha. OF	1.0 bag/ha. 21-0-0	2.0 bags/ha. 46-0-0 & 1.0 bag/ha. 0-0-60 at booting stage	80-0-0	1.0 bag/ha. 46-0-0 & 20 bags/ha. OF	1.0 bag/ha. 21-0-0	1.5 bags/ha. 46-0-0, 1.0 bag/ha. 0-0-60 at booting stage	0.5 bag/ha. 46-0-0 or based on leaf color chart
120-10-0	1.0 bags/ha. 16-20-0 & 1.5 bag/ha. 46-0-0	1.0 bags/ha. 16-20-0 & 1.5 bag/ha. 46-0-0	1.0 bag/ha. 21-0-0	2.0 bags/ha. 46-0-0, 1.0 bag/ha. 0-0-60 at booting stage	80-10-0	1.0 bags/ha. 16-20-0 & 0.5 bag/ha. 46-0-0	1.0 bag/ha. 21-0-0	1.5 bags/ha. 46-0-0, 1.0 bag/ha. 0-0-60 at booting stage	0.7 bag/ha. 46-0-0 or based on leaf color chart
120-10-30	2.0 bags/ha. 14-14-14, 1.0 bag/ha. 46-0-0 & 20 bags/ha. OF	2.0 bags/ha. 14-14-14, 1.0 bag/ha. 46-0-0 & 20 bags/ha. OF	1.0 bag/ha. 21-0-0	2.0 bags/ha. 46-0-0, 1.0 bag/ha. 0-0-60 at booting stage	80-10-30	2.0 bags/ha. 14-14-14, 0.5 bag/ha. 46-0-0 & 20 bags/ha. OF	1.0 bag/ha. 21-0-0	1.5 bags/ha. 46-0-0, 1.0 bag/ha. 0-0-60 at booting stage	0.4 bag/ha. 46-0-0 or based on leaf color chart
120-10-45	2.0 bags/ha. 14-14-14 & 1.0 bag/ha. 46-0-0 & 20 bags/ha. OF	2.0 bags/ha. 14-14-14 & 1.0 bag/ha. 46-0-0 & 20 bags/ha. OF	1.0 bag/ha. 21-0-0	2.0 bags/ha. 46-0-0, 1.0 bag/ha. 0-0-60 at booting stage	80-10-45	2.0 bags/ha. 14-14-14 & 0.7 bag/ha. 46-0-0 & 20 bags/ha. OF	1.0 bag/ha. 21-0-0	2.0 bags/ha. 46-0-0, 1.0 bag/ha. 0-0-60 at booting stage	0.6 bag/ha. 46-0-0
120-20-0	2.0 bags/ha. 16-20-0, 1.0 bag/ha. 46-0-0 & 20 bags/ha. OF	2.0 bags/ha. 16-20-0, 1.0 bag/ha. 46-0-0 & 20 bags/ha. OF	1.0 bag/ha. 21-0-0	2.0 bags/ha. 46-0-0, 1.0 bag/ha. 0-0-60 at booting stage	80-20-0	2.0 bags/ha. 16-20-0, 0.5 bag/ha. 46-0-0 & 20 bags/ha. OF	1.0 bag/ha. 21-0-0	1.5 bags/ha. 46-0-0, 1.0 bag/ha. 0-0-60 at booting stage	0.5 bag/ha. 46-0-0 or based on leaf color chart
120-20-30	3.0 bags/ha. 14-14-14 & 0.7 bag/ha. 46-0-0 & 20 bags/ha. OF	3.0 bags/ha. 14-14-14 & 0.7 bag/ha. 46-0-0 & 20 bags/ha. OF	1.0 bag/ha. 21-0-0	2.0 bags/ha. 46-0-0, 1.0 bag/ha. 0-0-60 at booting stage	80-20-30	3.0 bags/ha. 14-14-14 & 20 bags/ha. OF	1.0 bag/ha. 21-0-0	1.5 bags/ha. 46-0-0, 1.0 bag/ha. 0-0-60 at booting stage	0.6 bag/ha. 46-0-0
120-30-0	3.0 bags/ha. 16-20-0 & 0.5 bag/ha. 46-0-0 & 20 bags/ha. OF	3.0 bags/ha. 16-20-0 & 0.5 bag/ha. 46-0-0 & 20 bags/ha. OF	1.0 bag/ha. 21-0-0	2.2 bags/ha. 46-0-0, 1.0 bag/ha. 0-0-60 at booting stage	80-30-0	1.0 bag/ha. 16-20-0 & 1.0 bag/ha. 46-0-0 & 20 bags/ha. OF	1.0 bag/ha. 21-0-0	1.5 bags/ha. 46-0-0, 1.0 bag/ha. 0-0-60 at booting stage	0.5 bag/ha. 46-0-0 or based on leaf color chart
120-30-30	4.0 bags/ha. 14-14-14 & 0.5 bag/ha. 46-0-0 & 20 bags/ha. OF	4.0 bags/ha. 14-14-14 & 0.5 bag/ha. 46-0-0 & 20 bags/ha. OF	1.0 bag/ha. 21-0-0	2.0 bags/ha. 46-0-0 & 1.0 bag/ha. 0-0-60 at booting stage	80-30-30	4.0 bags/ha. 14-14-14 & 20 bags/ha. OF	1.0 bag/ha. 21-0-0	3.0 bags/ha. 46-0-0 & 1.0 bag/ha. 0-0-60 at booting stage	0.7 bag/ha. 46-0-0
120-30-45	4.0 bags/ha. 14-14-14 & 0.5 bag/ha. 46-0-0 & 20 bags/ha. OF	4.0 bags/ha. 14-14-14 & 0.5 bag/ha. 46-0-0 & 20 bags/ha. OF	1.0 bag/ha. 21-0-0	2.0 bags/ha. 46-0-0 & 1.0 bag/ha. 0-0-60 at booting stage	80-30-45	4.0 bags/ha. 14-14-14 & 20 bags/ha. OF	1.0 bag/ha. 21-0-0	2.0 bags/ha. 46-0-0 & 1.0 bag/ha. 0-0-60 at booting stage	0.7 bag/ha. 46-0-0
140-10-0	1.0 bags/ha. 16-20-0 & 1.5 bag/ha. 46-0-0 & 20 bags/ha. OF	1.0 bags/ha. 16-20-0 & 1.5 bag/ha. 46-0-0 & 20 bags/ha. OF	1.0 bag/ha. 21-0-0	2.5 bags/ha. 46-0-0, 1.0 bag/ha. 0-0-60 at booting stage	100-10-0	1.0 bags/ha. 16-20-0 & 1.8 bag/ha. 46-0-0 & 20 bags/ha. OF	1.0 bag/ha. 21-0-0	1.5 bags/ha. 46-0-0, 1.0 bag/ha. 0-0-60 at booting stage	1 bag/ha. 46-0-0 based on leaf color chart
140-10-30	2.0 bags/ha. 14-14-14 & 1.5 bag/ha. 46-0-0 & 20 bags/ha. OF	2.0 bags/ha. 14-14-14 & 1.5 bag/ha. 46-0-0 & 20 bags/ha. OF	1.0 bag/ha. 21-0-0	2.5 bags/ha. 46-0-0 & 1.0 bag/ha. 0-0-60 at booting stage	100-10-30	2.0 bags/ha. 14-14-14 & 0.70 bag/ha. 46-0-0 & 20 bags/ha. OF	1.0 bag/ha. 21-0-0	2.0 bags/ha. 46-0-0, 1.0 bag/ha. 0-0-60 at booting stage	0.6 bag/ha. 46-0-0 or based on leaf color chart
140-20-0	2.0 bags/ha. 16-20-0 & 1.0 bag/ha. 46-0-0 & 20 bags/ha. OF	2.0 bags/ha. 16-20-0 & 1.0 bag/ha. 46-0-0 & 20 bags/ha. OF	1.0 bag/ha. 21-0-0	2.5 bags/ha. 46-0-0, 1.0 bag/ha. 0-0-60 at booting stage	100-20-0	2.0 bags/ha. 16-20-0 & 0.5 bag/ha. 46-0-0 & 20 bags/ha. OF	1.0 bag/ha. 21-0-0	1.7 bags/ha. 46-0-0, 1.0 bag/ha. 0-0-60 at booting stage	1.0 bag/ha. 46-0-0




Prepared by:

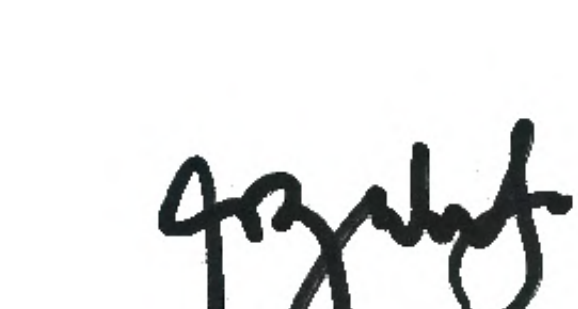
SOIL FERTILITY MAPPING GROUP
 Integrated Laboratory Division/
 Regional Soil Laboratory

Reviewed by:



DONNA AURA G. CALIBUYUT
 Agriculturist II



FEVIE RICA A. ANCHETA, RCh
 Chem. IV/Chief, RSL

Noted by:

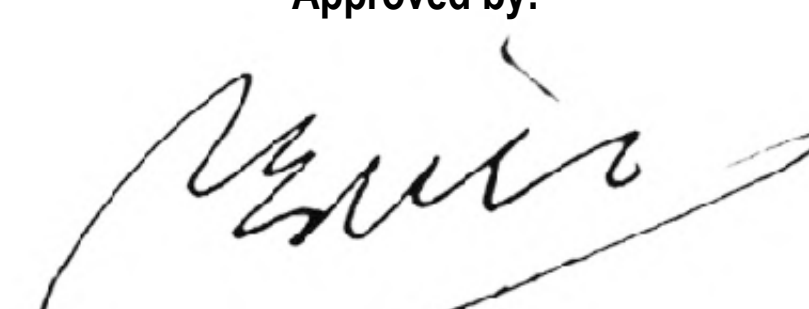

GERLY T. LUETA, DVM
 OIC-Chief, Integrated Laboratory
 Division

Noted by:


ROBERTO C. BUSANIA, DVM
 OIC-Regional Technical Director
 for Operation and Extension


ROSE MARY G. AQUINO
 Regional Technical Director
 for Research And Regulations

Approved by:


NARCISO A. EDILLO, M.A.ED
 Regional Executive Director

This Soil Fertility Map was produced under the collaborative undertaking of the Department of Agriculture Regional Field Office No. 02, Regional Soil Laboratory and Local Government Unit, CY 2022 Boundaries are not considered authoritative.

The Department of Agriculture Regional Field Office No. 02 claims the sole responsibility by any omission/errors of this map. Users are requested to inform the DA-RFO 02, Integrated Laboratory Division, Tuguegarao City, Cagayan.

Distributed by:
 Department of Agriculture, RFO 02
 Regional Soil Laboratory
 Soil Fertility Mapping Group
 © Copyright Reserved 2022