

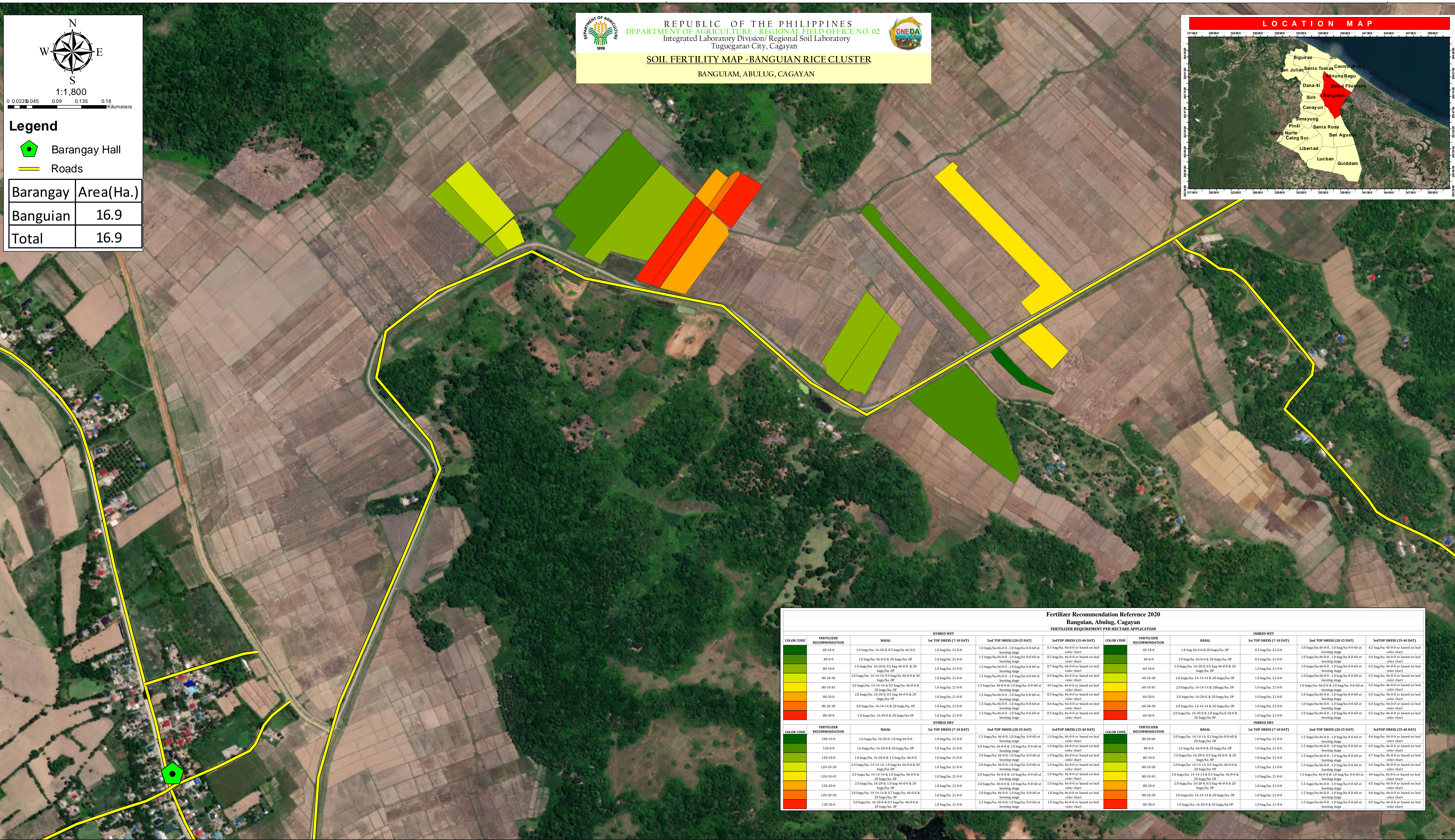
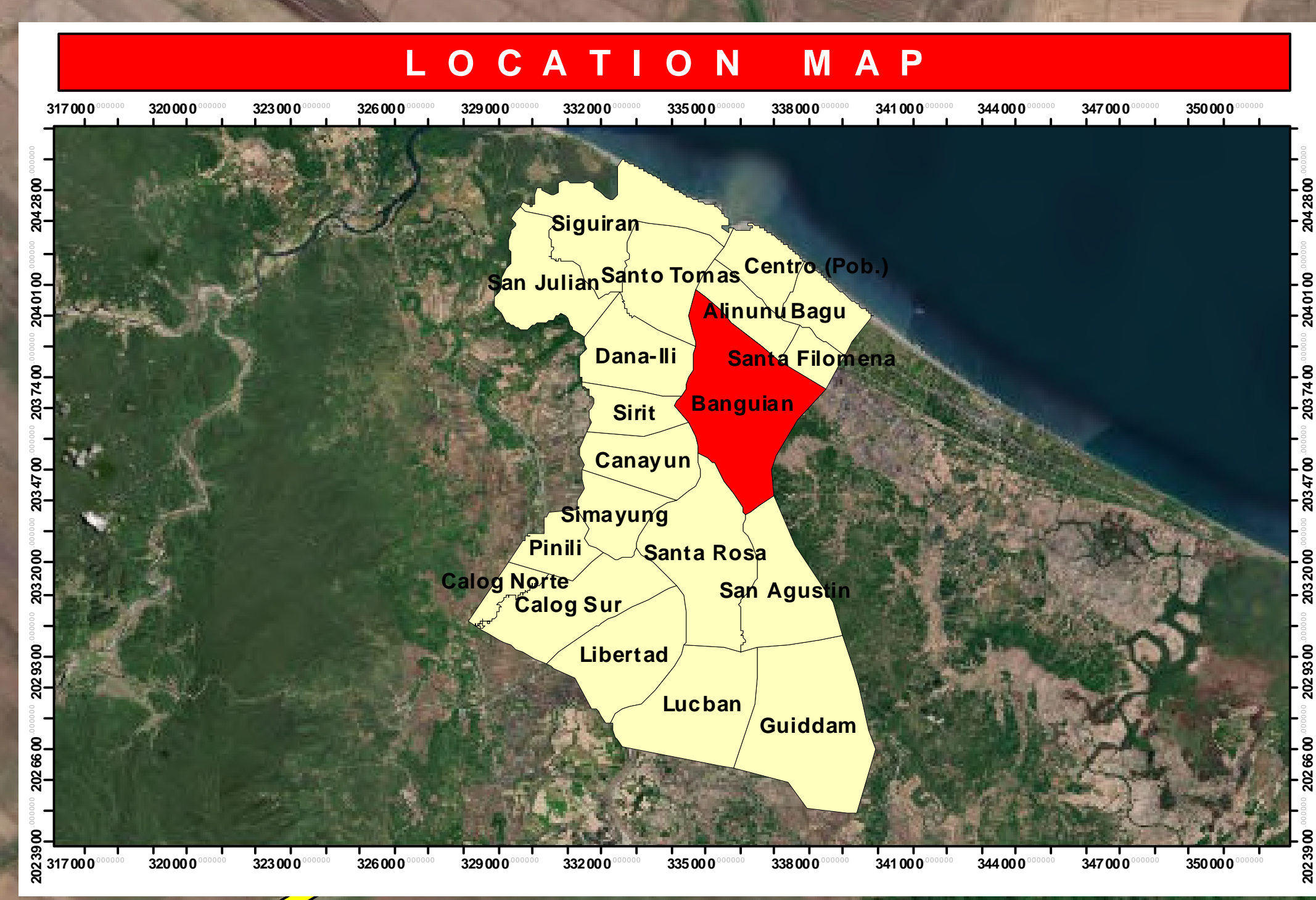
Legend

- Barangay Hall
- Roads

Barangay	Area(Ha.)
Banguian	16.9
Total	16.9

REPUBLIC OF THE PHILIPPINES
 DEPARTMENT OF AGRICULTURE - REGIONAL FIELD OFFICE NO. 02
 Integrated Laboratory Division/ Regional Soil Laboratory
 Tuguegarao City, Cagayan

SOIL FERTILITY MAP - BANGUIAN RICE CLUSTER
 BANGUIAM, ABULUG, CAGAYAN



Fertilizer Recommendation Reference 2020
Banguian, Abulug, Cagayan

FERTILIZER REQUIREMENT PER HECTARE APPLICATION

HYBRID WET					INBRED WET						
COLOR CODE	FERTILIZER RECOMMENDATION	BASAL	1st TOP DRESS (7-10 DAT)	2nd TOP DRESS (20-25 DAT)	3rd TOP DRESS (35-40 DAT)	COLOR CODE	FERTILIZER RECOMMENDATION	BASAL	1st TOP DRESS (7-10 DAT)	2nd TOP DRESS (20-25 DAT)	3rd TOP DRESS (35-40 DAT)
60-10-0	1.0 bag/ha. 46-0-0 or based on leaf color chart	1.0 bag/ha. 16-20-0 & 20 bags/ha. OF	1.0 bag/ha. 21-0-0	1.0 bag/ha. 46-0-0 or based on leaf color chart	0.3 bag/ha. 46-0-0 or based on leaf color chart	40-10-0	1.0 bag/ha. 46-0-0 or based on leaf color chart	1.0 bag/ha. 16-20-0 & 20 bags/ha. OF	0.5 bag/ha. 21-0-0	1.0 bag/ha. 46-0-0 or based on leaf color chart	0.2 bag/ha. 46-0-0 or based on leaf color chart
80-0-0	1.0 bag/ha. 46-0-0 or based on leaf color chart	1.0 bag/ha. 16-20-0 & 20 bags/ha. OF	1.0 bag/ha. 21-0-0	1.5 bag/ha. 46-0-0 or based on leaf color chart	0.5 bag/ha. 46-0-0 or based on leaf color chart	60-0-0	1.0 bag/ha. 46-0-0 or based on leaf color chart	1.0 bag/ha. 16-20-0 & 20 bags/ha. OF	0.5 bag/ha. 21-0-0	1.0 bag/ha. 46-0-0 or based on leaf color chart	0.4 bag/ha. 46-0-0 or based on leaf color chart
80-10-0	1.0 bag/ha. 46-0-0 or based on leaf color chart	1.0 bag/ha. 16-20-0 & 20 bags/ha. OF	1.0 bag/ha. 21-0-0	1.5 bag/ha. 46-0-0 or based on leaf color chart	0.7 bag/ha. 46-0-0 or based on leaf color chart	60-10-0	1.0 bag/ha. 46-0-0 or based on leaf color chart	1.0 bag/ha. 16-20-0 & 20 bags/ha. OF	1.0 bag/ha. 21-0-0	1.0 bag/ha. 46-0-0 or based on leaf color chart	0.3 bag/ha. 46-0-0 or based on leaf color chart
80-10-30	2.0 bags/ha. 14-14-14 & 0.5 bag/ha. 46-0-0 & 20 bags/ha. OF	1.0 bag/ha. 16-20-0 & 20 bags/ha. OF	1.0 bag/ha. 21-0-0	1.5 bag/ha. 46-0-0 or based on leaf color chart	0.4 bag/ha. 46-0-0 or based on leaf color chart	60-10-30	2.0 bags/ha. 14-14-14 & 20 bags/ha. OF	1.0 bag/ha. 16-20-0 & 20 bags/ha. OF	1.0 bag/ha. 21-0-0	1.0 bag/ha. 46-0-0 or based on leaf color chart	0.5 bag/ha. 46-0-0 or based on leaf color chart
80-10-45	2.0 bags/ha. 14-14-14 & 0.5 bag/ha. 46-0-0 & 20 bags/ha. OF	1.0 bag/ha. 16-20-0 & 20 bags/ha. OF	1.0 bag/ha. 21-0-0	1.5 bag/ha. 46-0-0 or based on leaf color chart	0.4 bag/ha. 46-0-0 or based on leaf color chart	60-10-45	2.0 bags/ha. 14-14-14 & 20 bags/ha. OF	1.0 bag/ha. 16-20-0 & 20 bags/ha. OF	1.0 bag/ha. 21-0-0	1.0 bag/ha. 46-0-0 or based on leaf color chart	0.5 bag/ha. 46-0-0 or based on leaf color chart
80-20-0	2.0 bags/ha. 16-20-0 & 0.5 bag/ha. 46-0-0 & 20 bags/ha. OF	1.0 bag/ha. 16-20-0 & 20 bags/ha. OF	1.0 bag/ha. 21-0-0	1.5 bag/ha. 46-0-0 or based on leaf color chart	0.5 bag/ha. 46-0-0 or based on leaf color chart	60-20-0	2.0 bags/ha. 16-20-0 & 20 bags/ha. OF	1.0 bag/ha. 16-20-0 & 20 bags/ha. OF	1.0 bag/ha. 21-0-0	1.0 bag/ha. 46-0-0 or based on leaf color chart	0.5 bag/ha. 46-0-0 or based on leaf color chart
80-20-30	3.0 bags/ha. 14-14-14 & 20 bags/ha. OF	1.0 bag/ha. 16-20-0 & 20 bags/ha. OF	1.0 bag/ha. 21-0-0	1.5 bag/ha. 46-0-0 or based on leaf color chart	0.6 bag/ha. 46-0-0 or based on leaf color chart	60-20-30	3.0 bags/ha. 14-14-14 & 20 bags/ha. OF	1.0 bag/ha. 16-20-0 & 20 bags/ha. OF	1.0 bag/ha. 21-0-0	1.0 bag/ha. 46-0-0 or based on leaf color chart	0.3 bag/ha. 46-0-0 or based on leaf color chart
80-30-0	1.0 bag/ha. 16-20-0 & 20 bags/ha. OF	1.0 bag/ha. 16-20-0 & 20 bags/ha. OF	1.0 bag/ha. 21-0-0	1.5 bag/ha. 46-0-0 or based on leaf color chart	0.5 bag/ha. 46-0-0 or based on leaf color chart	60-30-0	2.0 bags/ha. 16-20-0 & 20 bags/ha. OF	1.0 bag/ha. 16-20-0 & 20 bags/ha. OF	1.0 bag/ha. 21-0-0	1.0 bag/ha. 46-0-0 or based on leaf color chart	0.5 bag/ha. 46-0-0 or based on leaf color chart
HYBRID DRY					INBRED DRY						
COLOR CODE	FERTILIZER RECOMMENDATION	BASAL	1st TOP DRESS (7-10 DAT)	2nd TOP DRESS (20-25 DAT)	3rd TOP DRESS (35-40 DAT)	COLOR CODE	FERTILIZER RECOMMENDATION	BASAL	1st TOP DRESS (7-10 DAT)	2nd TOP DRESS (20-25 DAT)	3rd TOP DRESS (35-40 DAT)
100-10-0	1.0 bag/ha. 46-0-0 or based on leaf color chart	1.0 bag/ha. 16-20-0 & 1.0 bag 46-0-0	1.0 bag/ha. 21-0-0	1.5 bag/ha. 46-0-0 or based on leaf color chart	1.0 bag/ha. 46-0-0 or based on leaf color chart	80-20-60	3.0 bags/ha. 14-14-14, 0.5 bag/ha. 46-0-0 & 20 bags/ha. OF	1.0 bag/ha. 16-20-0 & 20 bags/ha. OF	1.0 bag/ha. 21-0-0	1.5 bag/ha. 46-0-0 or based on leaf color chart	0.6 bag/ha. 46-0-0 or based on leaf color chart
120-0-0	1.6 bag/ha. 46-0-0 or based on leaf color chart	1.0 bag/ha. 16-20-0 & 20 bags/ha. OF	1.0 bag/ha. 21-0-0	2.0 bags/ha. 46-0-0 or based on leaf color chart	1.0 bag/ha. 46-0-0 or based on leaf color chart	80-0-0	1.0 bag/ha. 46-0-0 or based on leaf color chart	1.0 bag/ha. 16-20-0 & 20 bags/ha. OF	1.0 bag/ha. 21-0-0	1.5 bag/ha. 46-0-0 or based on leaf color chart	0.5 bag/ha. 46-0-0 or based on leaf color chart
120-10-0	1.0 bag/ha. 46-0-0 or based on leaf color chart	1.0 bag/ha. 16-20-0 & 1.5 bag/ha. 46-0-0	1.0 bag/ha. 21-0-0	2.0 bags/ha. 46-0-0 or based on leaf color chart	1.0 bag/ha. 46-0-0 or based on leaf color chart	80-10-0	1.0 bag/ha. 46-0-0 or based on leaf color chart	1.0 bag/ha. 16-20-0 & 0.5 bag/ha. 46-0-0 & 20 bags/ha. OF	1.0 bag/ha. 21-0-0	1.5 bag/ha. 46-0-0 or based on leaf color chart	0.7 bag/ha. 46-0-0 or based on leaf color chart
120-10-30	2.0 bags/ha. 14-14-14 & 1.0 bag/ha. 46-0-0 & 20 bags/ha. OF	1.0 bag/ha. 16-20-0 & 20 bags/ha. OF	1.0 bag/ha. 21-0-0	2.0 bags/ha. 46-0-0 or based on leaf color chart	1.0 bag/ha. 46-0-0 or based on leaf color chart	80-10-30	2.0 bags/ha. 14-14-14 & 0.5 bag/ha. 46-0-0 & 20 bags/ha. OF	1.0 bag/ha. 16-20-0 & 20 bags/ha. OF	1.0 bag/ha. 21-0-0	1.5 bag/ha. 46-0-0 or based on leaf color chart	0.4 bag/ha. 46-0-0 or based on leaf color chart
120-10-45	2.0 bags/ha. 14-14-14 & 1.0 bag/ha. 46-0-0 & 20 bags/ha. OF	1.0 bag/ha. 16-20-0 & 20 bags/ha. OF	1.0 bag/ha. 21-0-0	2.0 bags/ha. 46-0-0 or based on leaf color chart	1.0 bag/ha. 46-0-0 or based on leaf color chart	80-10-45	2.0 bags/ha. 14-14-14 & 0.5 bag/ha. 46-0-0 & 20 bags/ha. OF	1.0 bag/ha. 16-20-0 & 20 bags/ha. OF	1.0 bag/ha. 21-0-0	1.5 bag/ha. 46-0-0 or based on leaf color chart	0.4 bag/ha. 46-0-0 or based on leaf color chart
120-20-0	2.0 bags/ha. 16-20-0 & 1.0 bag 46-0-0 & 20 bags/ha. OF	1.0 bag/ha. 16-20-0 & 20 bags/ha. OF	1.0 bag/ha. 21-0-0	2.0 bags/ha. 46-0-0 or based on leaf color chart	1.0 bag/ha. 46-0-0 or based on leaf color chart	80-20-0	2.0 bags/ha. 16-20-0 & 0.5 bag/ha. 46-0-0 & 20 bags/ha. OF	1.0 bag/ha. 16-20-0 & 20 bags/ha. OF	1.0 bag/ha. 21-0-0	1.5 bag/ha. 46-0-0 or based on leaf color chart	0.5 bag/ha. 46-0-0 or based on leaf color chart
120-20-30	3.0 bags/ha. 14-14-14 & 0.7 bag/ha. 46-0-0 & 20 bags/ha. OF	1.0 bag/ha. 16-20-0 & 20 bags/ha. OF	1.0 bag/ha. 21-0-0	2.0 bags/ha. 46-0-0 or based on leaf color chart	1.0 bag/ha. 46-0-0 or based on leaf color chart	80-20-30	3.0 bags/ha. 14-14-14 & 20 bags/ha. OF	1.0 bag/ha. 16-20-0 & 20 bags/ha. OF	1.0 bag/ha. 21-0-0	1.5 bag/ha. 46-0-0 or based on leaf color chart	0.6 bag/ha. 46-0-0 or based on leaf color chart
120-30-0	3.0 bags/ha. 16-20-0 & 0.5 bag/ha. 46-0-0 & 20 bags/ha. OF	1.0 bag/ha. 16-20-0 & 20 bags/ha. OF	1.0 bag/ha. 21-0-0	2.2 bag/ha. 46-0-0 or based on leaf color chart	1.0 bag/ha. 46-0-0 or based on leaf color chart	80-30-0	1.0 bag/ha. 16-20-0 & 20 bags/ha. OF	1.0 bag/ha. 16-20-0 & 20 bags/ha. OF	1.0 bag/ha. 21-0-0	1.5 bag/ha. 46-0-0 or based on leaf color chart	0.5 bag/ha. 46-0-0 or based on leaf color chart

Prepared by:

SOIL FERTILITY MAPPING GROUP
Integrated Laboratory Division/
Regional Soil Laboratory

Reviewed by:

DONNA AURA G. CALIBUYUT
Agriculturist II

FEVIE RICA A. ANCHETA, RCh
Chem. IV/Chief, RSL

Noted by:

GERLY T. ZULUETA, DVM
OIC-Chief, Integrated Laboratory
Division

Noted by:

ROBERTO C. BUSANIA, DVM
OIC-Regional Technical Director
for Operation and Extension

ROSE MARY G. AQUINO
Regional Technical Director
for Research And Regulations

Approved by:

NARCISO A. EDILLO, M.A.ED
Regional Executive Director

This Soil Fertility Map was produced under the collaborative undertaking of the Department of Agriculture Regional Field Office No. 02, Regional Soil Laboratory and Local Government Unit, CY 2022 Boundaries are not considered authoritative.

The Department of Agriculture Regional Field Office No. 02 claims the sole responsibility for any omissions/errors of this map. Users are requested to inform the DA-RFO 02, Integrated Laboratory Division, Tuguegarao City, Cagayan.

Distributed by:
Department of Agriculture, RFO 02
Regional Soil Laboratory
Soil Fertility Mapping Group
© Copyright Reserved 2022