

Legend

Municipal Hall

Barangay Hall

Roads

Corn River Flood Area total = 3,221 ha.

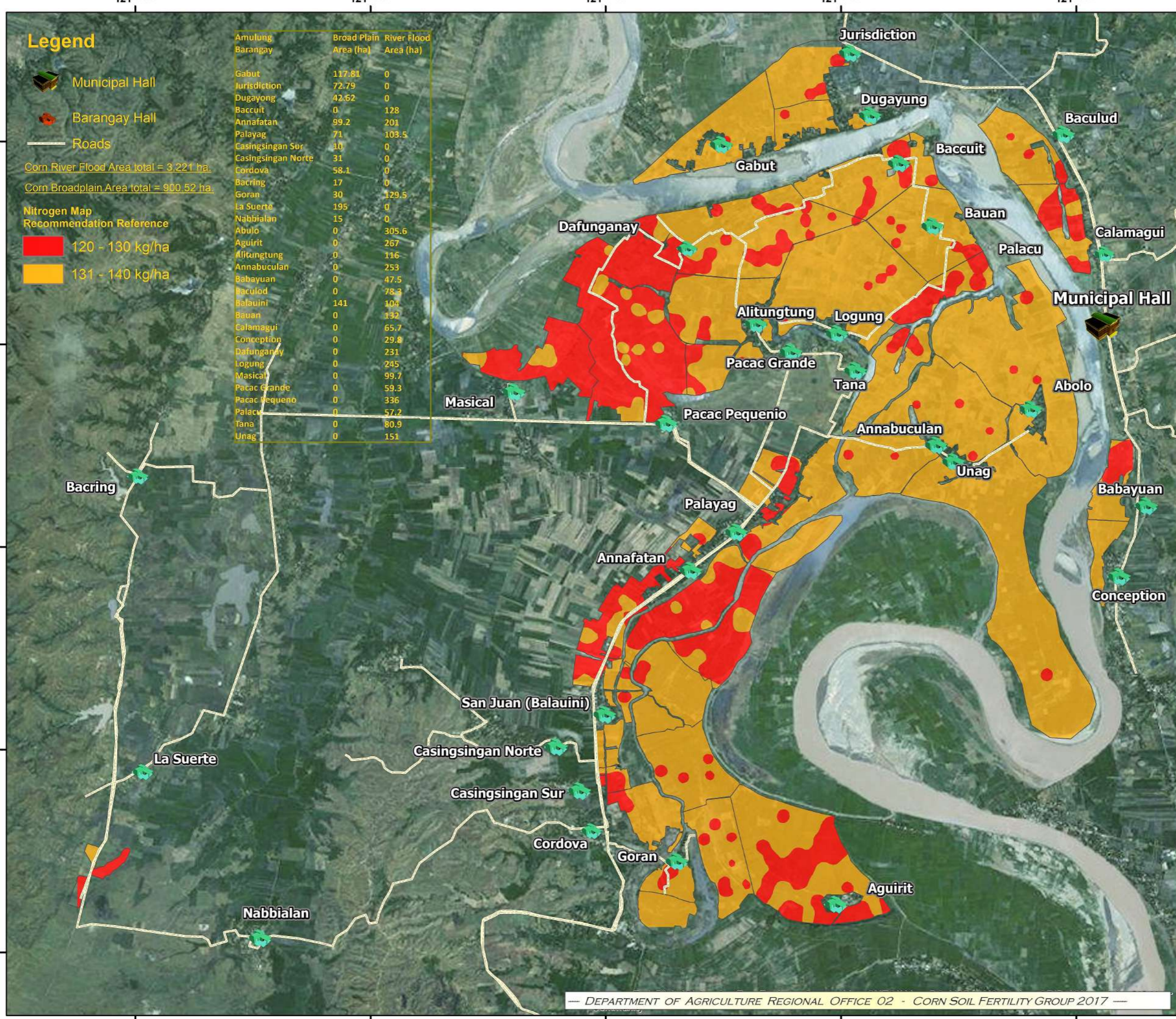
Corn Broadplain Area total = 900.52 ha.

Nitrogen Map Recommendation Reference

120 - 130 kg/ha

131 - 140 kg/ha

Amulung Barangay	Broad Plain Area (ha)	River Flood Area (ha)
Gabut	117.81	0
Jurisdiction	72.79	0
Dugayong	42.62	0
Bacuit	0	128
Annafatan	99.2	201
Palayag	71	103.5
Casingsingan Sur	10	0
Casingsingan Norte	31	0
Cordova	58.1	0
Bacring	17	0
Goran	30	129.5
La Suerte	195	0
Nabbialan	15	0
Abulo	0	305.6
Aguirit	0	267
Alitungtung	0	116
Annabuculan	0	253
Babayuan	0	47.5
Baculod	0	78.3
Balauini	141	104
Bauan	0	132
Calamagui	0	65.7
Conception	0	29.8
Dafunganay	0	231
Logung	0	245
Masical	0	99.7
Pacac Grande	0	59.3
Pacac Pequeno	0	336
Palacu	0	57.2
Tana	0	80.9
Unag	0	151



1:53,000

0 0.2750.55 1.1 1.65 2.2 Kilometers



Date Accomplished : April 2017

Corn Nitrogen Map

Municipality of AMULUNG

Province of Cagayan, Philippines

Prerared by:

- Alister Earl M. Meman
- Jouie D. Sumigad
- Isagani Cabalsi
- Geze James V. Binuyat
- Eleazar Gabriel A. Castillo
- Sally Jane B. Duruin
- Eric G. Mata
- Aarone M. Furugganan
- Ric B. Balinoyos
- Kenneth Godfrey M. De Leon
- Crescen Karl M. Espejo
- Chinkee A. Agustin

Reviewed by:

DAISY C. SALDO
Engineer II

Noted by:

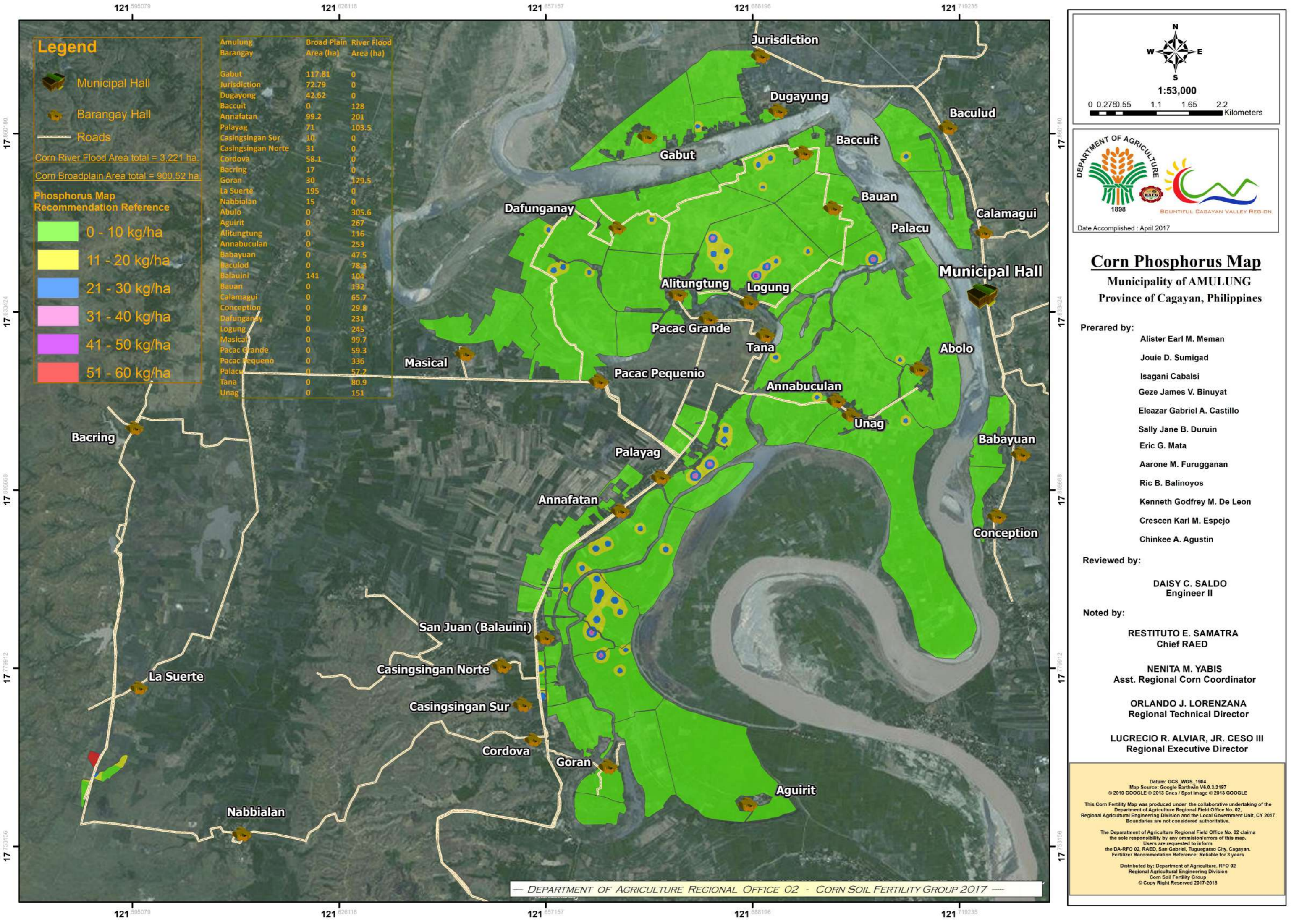
- RESTITUTO E. SAMATRA**
Chief RAED
- NENITA M. YABIS**
Asst. Regional Corn Coordinator
- ORLANDO J. LORENZANA**
Regional Technical Director
- LUCRECIO R. ALVIAR, JR. CESO III**
Regional Executive Director

Datum: GCS_WGS_1984
Map Source: Google Earthwin V6.0.3.2197
© 2010 GOOGLE © 2013 Cnes / Spot Image © 2013 GOOGLE

This Corn Fertility Map was produced under the collaborative undertaking of the Department of Agriculture Regional Field Office No. 02, Regional Agricultural Engineering Division and the Local Government Unit, CY 2017. Boundaries are not considered authoritative.

The Department of Agriculture Regional Field Office No. 02 claims the sole responsibility for any omission/errors of this map. Users are requested to inform the DA-RFO 02, RAED, San Gabriel, Tuguegarao City, Cagayan. Fertilizer Recommendation Reference: Reliable for 3 years.

Distributed by: Department of Agriculture, RFO 02
Regional Agricultural Engineering Division
Corn Soil Fertility Group
© Copy Right Reserved 2017-2018



Legend

- Municipal Hall
 - Barangay Hall
 - Roads
- Corn River Flood Area total = 3,221 ha.
 Corn Broadplain Area total = 900.52 ha
- Phosphorus Map Recommendation Reference**
- 0 - 10 kg/ha
 - 11 - 20 kg/ha
 - 21 - 30 kg/ha
 - 31 - 40 kg/ha
 - 41 - 50 kg/ha
 - 51 - 60 kg/ha

Amulung Barangay	Broad Plain Area (ha)	River Flood Area (ha)
Gabut	117.81	0
Jurisdiction	72.79	0
Dugayong	42.62	0
Bacuit	0	128
Annafatan	99.2	201
Palayag	71	103.5
Casingsingan Sur	10	0
Casingsingan Norte	31	0
Cordova	58.1	0
Bacring	17	0
Goran	30	129.5
La Suerte	195	0
Nabbialan	15	0
Abulo	0	305.6
Aguirit	0	267
Alitungtung	0	116
Annabuculan	0	253
Babayuan	0	47.5
Baculod	0	78.3
Balauini	141	104
Bauan	0	132
Calamagui	0	65.7
Conception	0	29.8
Dafunganay	0	231
Logung	0	245
Masical	0	99.7
Pacac Grande	0	59.3
Pacac Pequeno	0	336
Palacu	0	57.2
Tana	0	80.9
Unag	0	151

1:53,000
0 0.2750.55 1.1 1.65 2.2 Kilometers

DEPARTMENT OF AGRICULTURE
1898

BOUNTIFUL CAGAYAN VALLEY REGION

Date Accomplished : April 2017

Corn Phosphorus Map
 Municipality of AMULUNG
 Province of Cagayan, Philippines

- Prerared by:**
- Alister Earl M. Meman
 - Jouie D. Sumigad
 - Isagani Cabalsi
 - Geze James V. Binuyat
 - Eleazar Gabriel A. Castillo
 - Sally Jane B. Duruin
 - Eric G. Mata
 - Aarone M. Furugganan
 - Ric B. Balinoyos
 - Kenneth Godfrey M. De Leon
 - Crescen Karl M. Espejo
 - Chinkee A. Agustin

Reviewed by:

DAISY C. SALDO
Engineer II

Noted by:

RESTITUTO E. SAMATRA
Chief RAED

NENITA M. YABIS
Asst. Regional Corn Coordinator

ORLANDO J. LORENZANA
Regional Technical Director

LUCRECIO R. ALVIAR, JR. CESO III
Regional Executive Director

Datum: GCS_WGS_1984
 Map Source: Google Earthwin V6.0.3.2197
 © 2010 GOOGLE © 2013 Cnes / Spot Image © 2013 GOOGLE

This Corn Fertility Map was produced under the collaborative undertaking of the Department of Agriculture Regional Field Office No. 02, Regional Agricultural Engineering Division and the Local Government Unit, CY 2017. Boundaries are not considered authoritative.

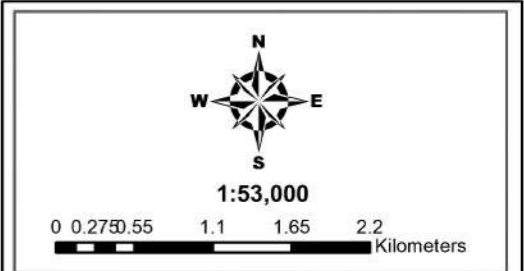
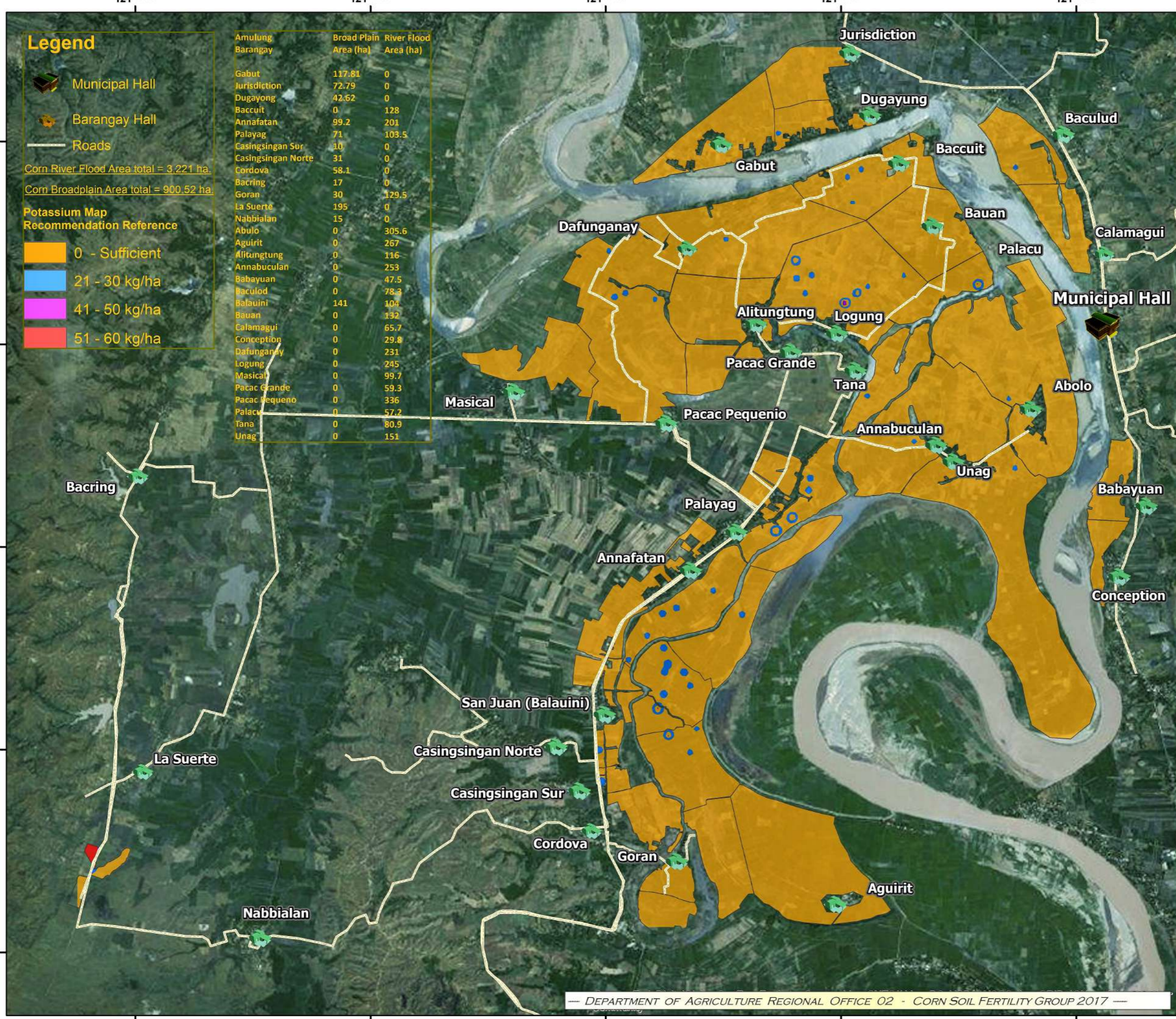
The Department of Agriculture Regional Field Office No. 02 claims the sole responsibility for any omission/errors of this map. Users are requested to inform the DA-RFO 02, RAED, San Gabriel, Tuguegarao City, Cagayan. Fertilizer Recommendation Reference: Reliable for 3 years.

Distributed by: Department of Agriculture, RFO 02
 Regional Agricultural Engineering Division
 Corn Soil Fertility Group
 © Copy Right Reserved 2017-2018

Legend

- Municipal Hall
 - Barangay Hall
 - Roads
 - Corn River Flood Area total = 3,221 ha.
 - Corn Broadplain Area total = 900.52 ha.
- Potassium Map Recommendation Reference**
- 0 - Sufficient
 - 21 - 30 kg/ha
 - 41 - 50 kg/ha
 - 51 - 60 kg/ha

Amulung Barangay	Broad Plain Area (ha)	River Flood Area (ha)
Gabut	117.81	0
Jurisdiction	72.79	0
Dugayong	42.62	0
Bacuit	0	128
Annafatan	99.2	201
Palayag	71	103.5
Casingsingan Sur	10	0
Casingsingan Norte	31	0
Cordova	58.1	0
Bacring	17	0
Goran	30	129.5
La Suerte	195	0
Nabbialan	15	0
Abulo	0	305.6
Aguirit	0	267
Alitungtung	0	116
Annabuculan	0	253
Babayuan	0	47.5
Baculod	0	78.3
Balauini	141	104
Bauan	0	132
Calamagui	0	65.7
Conception	0	29.8
Dafunganay	0	231
Logung	0	245
Masical	0	99.7
Pacac Grande	0	59.3
Pacac Pequeno	0	336
Palacu	0	57.2
Tana	0	80.9
Unag	0	151



Date Accomplished : April 2017

Corn Potassium Map

Municipality of AMULUNG

Province of Cagayan, Philippines

- Prerared by:**
- Alister Earl M. Meman
 - Jouie D. Sumigad
 - Isagani Cabalsi
 - Geze James V. Binuyat
 - Eleazar Gabriel A. Castillo
 - Sally Jane B. Duruin
 - Eric G. Mata
 - Aarone M. Furugganan
 - Ric B. Balinoyos
 - Kenneth Godfrey M. De Leon
 - Crescen Karl M. Espejo
 - Chinkee A. Agustin

Reviewed by:

DAISY C. SALDO
Engineer II

Noted by:

RESTITUTO E. SAMATRA
Chief RAED

NENITA M. YABIS
Asst. Regional Corn Coordinator

ORLANDO J. LORENZANA
Regional Technical Director

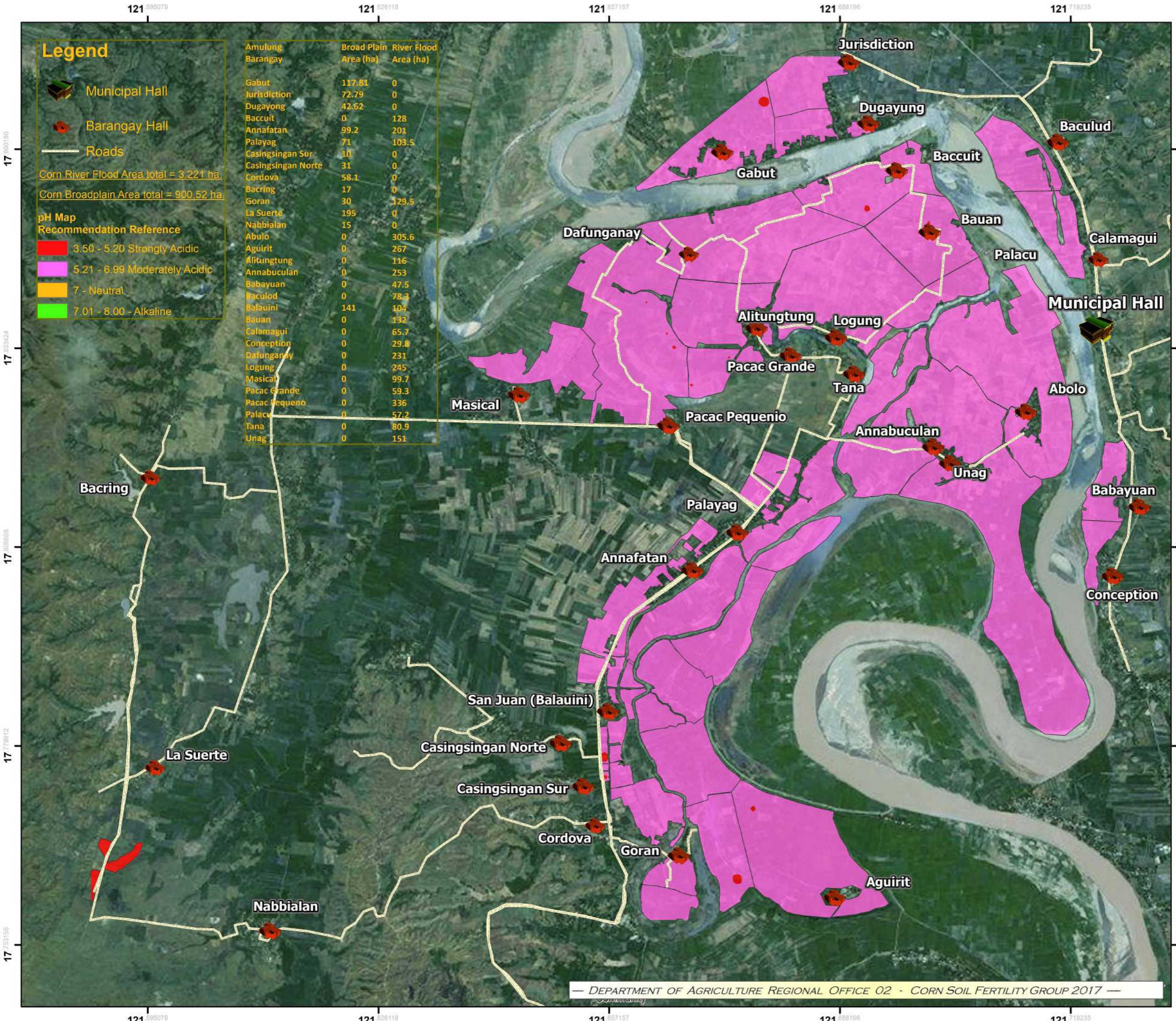
LUCRECIO R. ALVIAR, JR. CESO III
Regional Executive Director

Datum: GCS_WGS_1984
Map Source: Google Earthwin V6.0.3.2197
© 2010 GOOGLE © 2013 Cnes / Spot Image © 2013 GOOGLE

This Corn Fertility Map was produced under the collaborative undertaking of the Department of Agriculture Regional Field Office No. 02, Regional Agricultural Engineering Division and the Local Government Unit, CY 2017. Boundaries are not considered authoritative.

The Department of Agriculture Regional Field Office No. 02 claims the sole responsibility by any omission/errors of this map. Users are requested to inform the DA-RFO 02, RAED, San Gabriel, Tuguegarao City, Cagayan. Fertilizer Recommendation Reference: Reliable for 3 years.

Distributed by: Department of Agriculture, RFO 02
Regional Agricultural Engineering Division
Corn Soil Fertility Group
© Copy Right Reserved 2017-2018



Legend

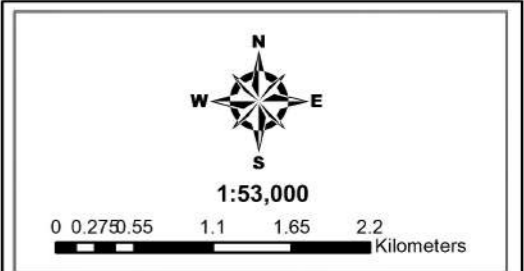
- Municipal Hall
- Barangay Hall
- Roads

Corn River Flood Area total = 3,221 ha.
 Corn Broadplain Area total = 900.52 ha.

pH Map Recommendation Reference

- 3.50 - 5.20 Strongly Acidic
- 5.21 - 6.99 Moderately Acidic
- 7 - Neutral
- 7.01 - 8.00 - Alkaline

Amulung Barangay	Broad Plain Area (ha)	River Flood Area (ha)
Gabut	117.81	0
Jurisdiction	72.79	0
Dugayong	42.62	0
Bacuit	0	128
Annafatan	99.2	201
Palayag	71	103.5
Casingsingan Sur	10	0
Casingsingan Norte	31	0
Cordova	58.1	0
Bacring	17	0
Goran	30	129.5
La Suerte	195	0
Nabbialan	15	0
Abulo	0	305.6
Aguirit	0	267
Alitungtung	0	116
Annabuculan	0	253
Babayuan	0	47.5
Baculod	0	78.3
Balauini	141	104
Bauan	0	132
Calamagui	0	65.7
Conception	0	29.8
Dafunganay	0	231
Logung	0	245
Masical	0	99.7
Pacac Grande	0	59.3
Pacac Pequeno	0	336
Palacu	0	57.2
Tana	0	80.9
Unag	0	151



Corn Ph Map
 Municipality of AMULUNG
 Province of Cagayan, Philippines

- Prerared by:**
- Alister Earl M. Meman
 - Jouie D. Sumigad
 - Isagani Cabalsi
 - Geze James V. Binuyat
 - Eleazar Gabriel A. Castillo
 - Sally Jane B. Duruin
 - Eric G. Mata
 - Aarone M. Furugganan
 - Ric B. Balinoyos
 - Kenneth Godfrey M. De Leon
 - Crescen Karl M. Espejo
 - Chinkee A. Agustin

Reviewed by:

DAISY C. SALDO
 Engineer II

Noted by:

RESTITUTO E. SAMATRA
 Chief RAED

NENITA M. YABIS
 Asst. Regional Corn Coordinator

ORLANDO J. LORENZANA
 Regional Technical Director

LUCRECIO R. ALVIAR, JR. CESO III
 Regional Executive Director

Datum: GCS_WGS_1984
 Map Source: Google Earthwin V6.0.3.2197
 © 2010 GOOGLE © 2013 Cnes / Spot Image © 2013 GOOGLE

This Corn Ph Fertility Map was produced under the collaborative undertaking of the Department of Agriculture Regional Field Office No. 02, Regional Agricultural Engineering Division and the Local Government Unit, CY 2017. Boundaries are not considered authoritative.

The Department of Agriculture Regional Field Office No. 02 claims the sole responsibility for any omission/errors of this map. Users are requested to inform the DA-RFO 02, RAED, San Gabriel, Tuguegarao City, Cagayan. Fertilizer Recommendation Reference: Reliable for 3 years.

Distributed by: Department of Agriculture, RFO 02
 Regional Agricultural Engineering Division
 Corn Soil Fertility Group
 © Copy Right Reserved 2017-2018