

Com Soil Fertility Map Corn Riverflood Area Municipality of Diffun Province of Quirino

Prepared by:

JOANAROSE R. ROQUE
BEVERLY ANNE D. TAMAYAO
SALLY JANE P. BALBUENA
JOUIE D. SUMIGAD
LORDAN P. LENTINO
ISAGANI S. CABALSI
JOEY A. CALUCAG
ELEAZAR GABRIELA A. CASTILLO

Reviewed by:

ANGELITA B. CALUBAQUIB
Agriculturist II

GENERO SO M. OLI
Engineer III

RESTITUTO E. SAMATRA
Chief, RAEG

NENITA M. YABIS
Agri II / ARCC

ORLANDO J. LORENZANA
Regional Technical Director

LUCRECIO R. ALVIAR, JR., CE SO III
Regional Executive Director

Date: CCS WGS 1984

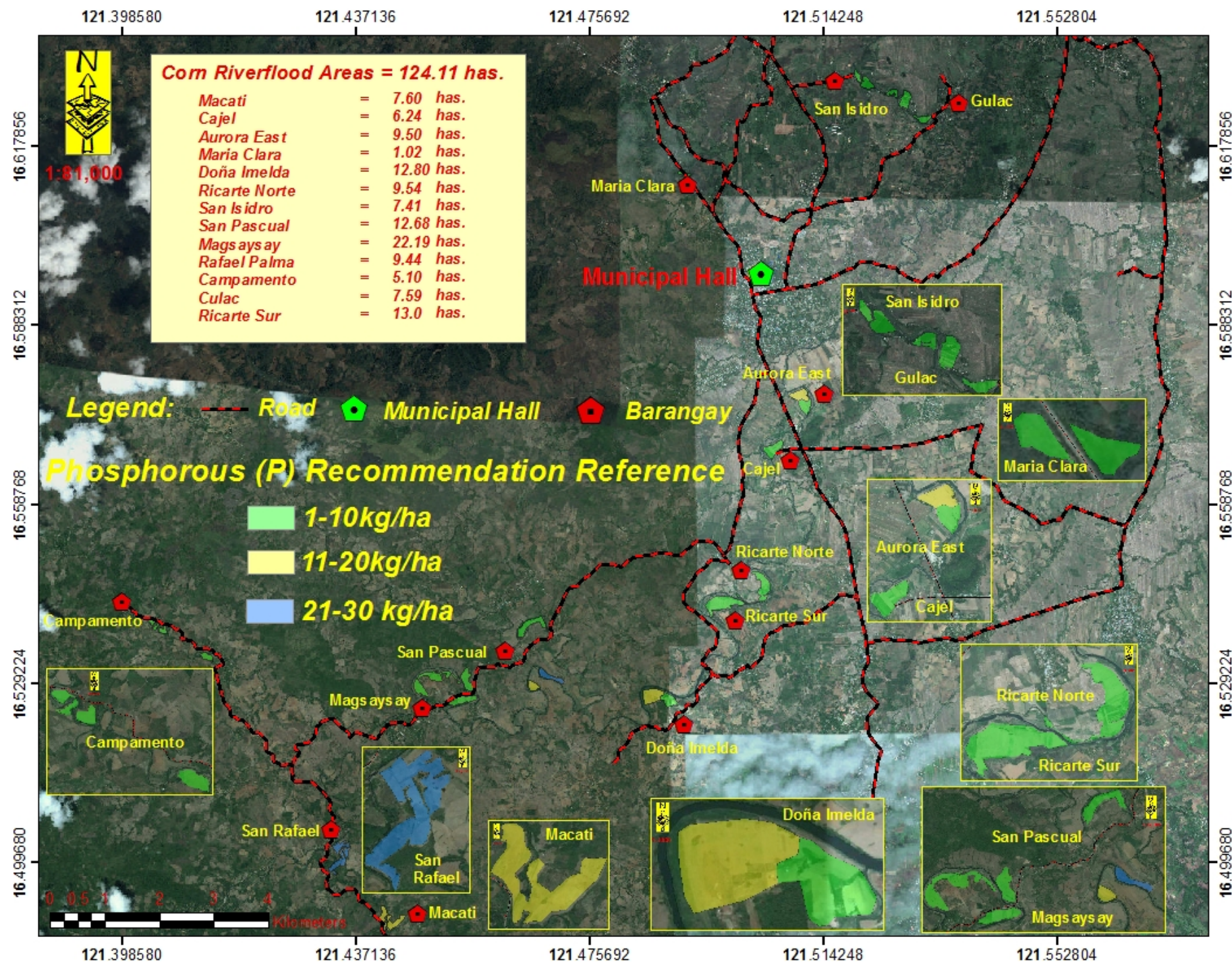
Map Source: Google Earth V8.3.2.197
© 2010 GOOGLE
© 2012 Open / Spot Image
© 2012 GOOGLE

This Fertility Map was produced under the collaborative undertaking of the Department of Agriculture Regional Field Office No. 02, Regional Agricultural Engineering Group and the Local Government Unit, CY 2013. Boundaries are not considered authoritative. The Department of Agriculture Regional Field Office No. 02 claims the sole responsibility for any omission or error of this map. Users are requested to inform the DA-RO-02, RAEG, San Gabriel, Irapuano City, Cagayan.

Fertilizer Recommendation Reference: Reliable for 3 years
Distributed by: Department of Agriculture, RPO 02
Regional Agricultural Engineering Group
Corn Soil Fertility Group



All Copy Right Reserved.
DA File AGCOMPUSW02
US GCM 2014



Com Soil Fertility Map Corn Riverflood Area Municipality of Diffun Province of Quirino

Prepared by:

JOANAROSE R. ROQUE
BEVERLY ANNE D. TAMAYAO
SALLY JANE P. BALBUENA
JOUIE D. SUMIGAD
LORDAN P. LENTINO
ISAGANI S. CABALSI
JOEY A. CALUCAG
ELEAZAR GABRIELA A. CASTILLO

Reviewed by:

ANGELITA B. CALUBAQUIB
Agriculturist II

GENERO SO M. OLI
Engineer III

RESTITUTO E. SAMATRA
Chief, RAEG

NENITA M. YABIS
Agri II / ARCC

ORLANDO J. LORENZANA
Regional Technical Director

LUCRECIO R. ALVIAR, JR., CE SO III
Regional Executive Director

Date: CCS WGS 1984

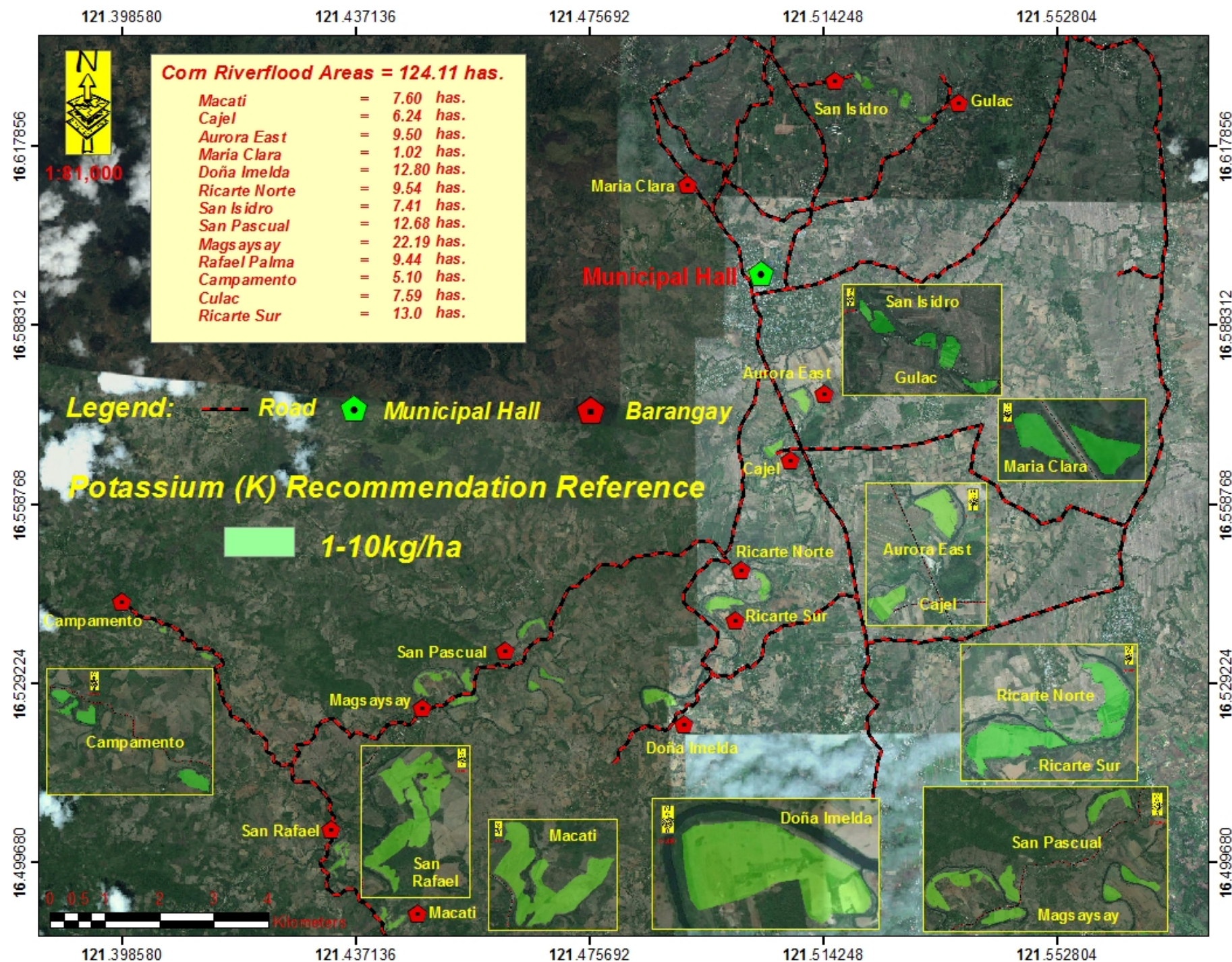
Map Source: Google Earth V8.3.2.917
© 2010 GOOGLE
© 2012 Open / Spot Image
© 2012 GOOGLE

This Fertility Map was produced under the collaborative undertaking of the Department of Agriculture Regional Field Office No. 02, Regional Agricultural Engineering Group and the Local Government Unit, CY 2013. Boundaries are not considered authoritative. The Department of Agriculture Regional Field Office No. 02 claims the sole responsibility for any omission or error of this map. Users are requested to inform the DA-RO-02, RAEG, San Gabriel, Iligan City, Cagayan.

Fertility Recommendation Reference: Reliable for 3 years
Distributed by: Department of Agriculture, RPO 02
Regional Agricultural Engineering Group
Corn Soil Fertility Group



All Copy Right Reserved.
DA is a GOVERNMENT
OF THE PHILIPPINES



Com Soil Fertility Map Corn Riverflood Area Municipality of Diffun Province of Quirino

Prepared by:

JOANAROSE R. ROQUE
BEVERLY ANNE D. TAMAYAO
SALLY JANE P. BALBUENA
JOUIE D. SUMIGAD
LORDAN P. LENTINO
ISAGANI S. CABALSI
JOEY A. CALUCAG
ELEAZAR GABRIELA A. CASTILLO

Reviewed by:

ANGELITA B. CALUBAQUIB
Agriculturist II

GENERO SO M. OLI
Engineer III

RESTITUTO E. SAMATRA
Chief, RAEG

NENITA M. YABIS
Agri II / ARCC

ORLANDO J. LORENZANA
Regional Technical Director

LUCRECIO R. ALVIAR, JR., CE SO III
Regional Executive Director

Date: GCS WGS 1984

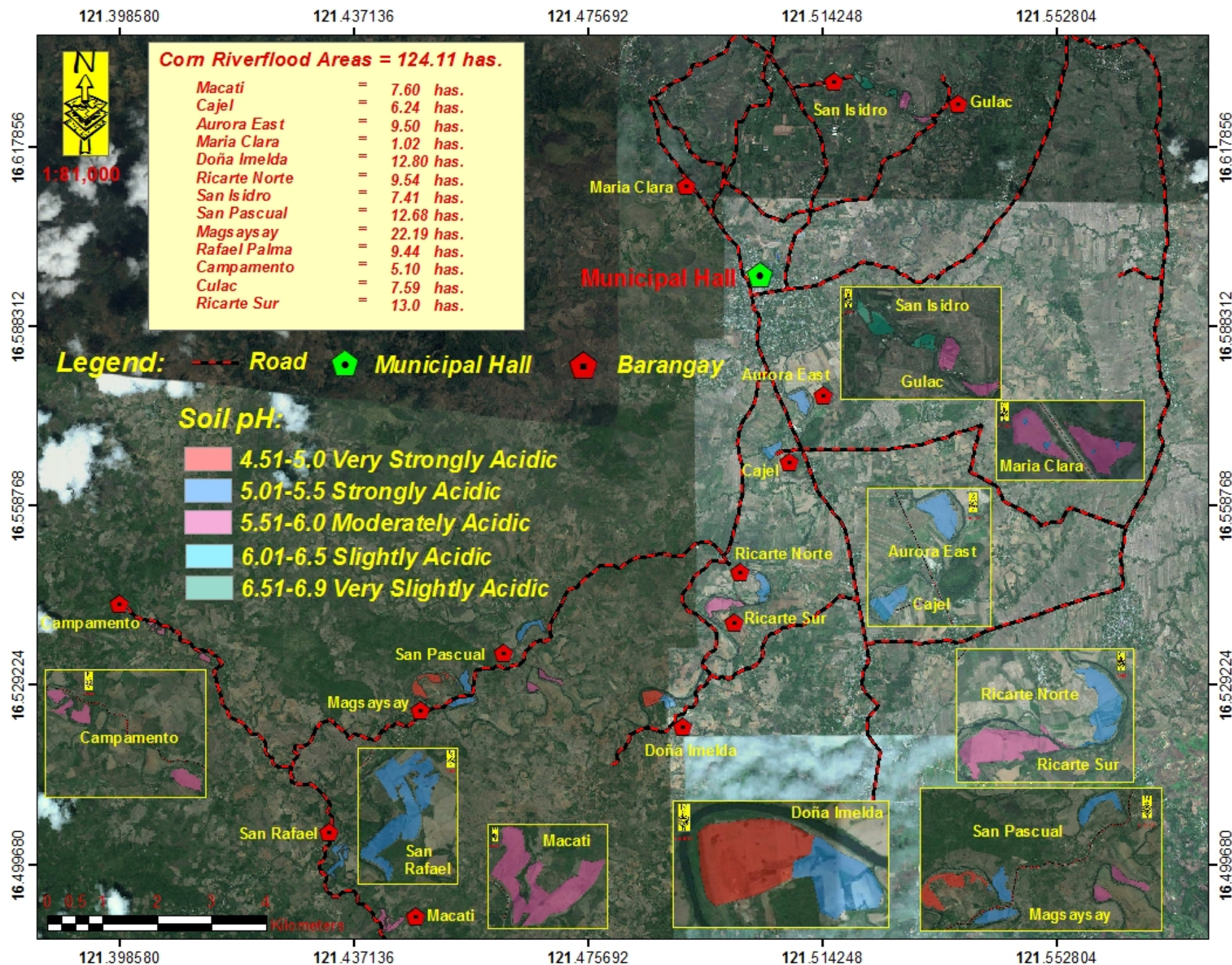
Map Source: Google Earth V6.9.3.2.197
© 2010 GOOGLE
© 2012 Open / Spot Image
© 2013 GOOGLE

This Fertility Map was produced under the collaborative undertaking of the Department of Agriculture Regional Field Office No. 02/Regional Agricultural Engineering Group and the Local Government Unit, CY 2013. Boundaries are not considered authoritative. The Department of Agriculture Regional Field Office No. 02 claims the sole responsibility by any commission / errors of this map. Users are requested to inform the DA-RO-02, HAO, San Gabriel, Iligan City, Cagayan.

Fertilizer Recommendation Reference: Reliable for 3 years. Distributed by: Department of Agriculture, RPO 02 Regional Agricultural Engineering Group Corn Soil Fertility Group



No Copy Right Reserved.
DA IS ACKNOWLEDGED:
DA/RO-02, 2014



pH Map

Corn Riverflood Area Municipality of Diffun Province of Quirino

Prepared by:

JOANAROSE R. ROQUE
BEVERLY ANNE D. TAMAYAO
SALLY JANE P. BALBUENA
JOUIE D. SUMIGAD
LORDAN P. LENTINO
ISAGANI S. CABALSI
JOEY A. CALUCAG
ELEAZAR GABRIELA A. CASTILLO

Reviewed by:

ANGELITA B. CALUBAQUIB
Agriculturist II

GENERO SO M. OLI
Engineer III

RESTITUTO E. SAMATRA
Chief, RAEG

NENITA M. YABIS
Agri II / ARCC

ORLANDO J. LORENZANA
Regional Technical Director

LUCRECIO R. ALVIAR, JR., CE SO III
Regional Executive Director

Date: 005 WGS 1984

Map Source: Google Earth V8.3.2.917
© 2010 GOOGLE
© 2013 OneMap / Spot Image
© 2013 GOOGLE

This pH Map was produced under the collaborative undertaking of the Department of Agriculture Regional Field Office No. 02 (Regional Agricultural Engineering Group and the Local Government Unit, CY 2013). Boundaries are not considered authoritative. The Department of Agriculture Regional Field Office No. 02 claims the sole responsibility for any omission or error of this map. Users are requested to inform the DA-RO-02, RAEG, San Gabriel, Irapuap City, Cagayan.

Fertilizer Recommendation Reference: Reliable for 3 years
Distributed by: Department of Agriculture, RFO 02
Regional Agricultural Engineering Group
Corn Soil Fertility Group



No Copy Right Reserved.
DATE ACCOMPLISHED:
06/06/2014