

121°11'30"E

121°12'0"E

121°12'30"E

LEGENDS:									
TOTAL AREA 46.21 HA.									
ROADS									
COLOR CODE	LETTER CODE	AREA Hectare	%	N	P	K	HYBRID WET / RUBBED DRY	HYBRID DRY	INBRED WET
	A	0.27	0.58	H	H	H	40-10-0	80-10-0	30-10-0
	B	0.36	0.78	H	H	H	40-10-0	80-10-0	30-10-0
	C	4.25	9.20	H	M	M	40-20-0	80-20-0	30-20-0
	D	0.92	1.99	H	M	M	40-20-0	80-20-0	30-20-0
	E	0.39	0.84	H	M	M	40-20-0	80-20-0	30-20-0
	F	4.97	10.76	MH	H	H	40-10-0	100-10-0	40-10-0
	G	7.45	16.12	MH	M	M	60-20-0	100-20-0	40-20-0
	H	1.73	3.74	MH	M	M	60-20-0	100-20-0	40-20-0
	I	0.33	0.71	MH	L	L	60-30-0	100-30-0	40-30-0
	J	0.64	1.38	MH	MH	MH	80-10-0	120-10-0	60-10-0
	K	5.97	12.92	MH	H	H	80-10-0	120-10-0	60-10-0
	L	0.2	0.43	MH	H	H	80-10-0	120-10-0	60-10-0
	M	0.53	1.15	MH	H	H	80-10-0	120-10-0	60-10-0
	N	9.43	20.41	MH	M	M	80-20-0	120-20-0	60-20-0
	O	4.57	9.89	MH	M	M	80-20-0	120-20-0	60-20-0
	P	2.25	4.87	MH	M	M	80-20-0	120-20-0	60-20-0
	Q	0.35	0.76	L	M	M	100-10-0	140-10-0	80-10-0
	R	0.11	0.24	L	M	M	100-20-0	140-20-0	80-20-0
	S	0.51	1.10	L	M	M	100-20-0	140-20-0	80-20-0
	T	0.27	0.58	L	M	M	100-20-0	140-20-0	80-20-0
	U	0.41	0.89	L	M	M	100-20-0	140-20-0	80-20-0

Note: Incorporate Organic Fertilizer on the soil during land preparation.  
Use Compost Fungus Activator (CFA) to enhance decomposition of rice straw after harvest.

DAT = DAYS AFTER TRANSPLANTING  
14-14-14 = Complete Fertilizer  
45-0-0 = Urea  
21-0-0 = Ammonium Sulfate  
0-0-60 = Muriate of Potash  
0-0-0 = Solophos  
30-20-0 = Ammonium Phosphate

L = Low  
MH = Moderately High  
M = Medium  
H = High  
VH = Very High



REPUBLIC OF THE PHILIPPINES  
DEPARTMENT OF AGRICULTURE - REGIONAL FIELD OFFICE NO. 02  
Integrated Laboratory Division/ Regional Soil Laboratory  
Tuguegarao City, Cagayan

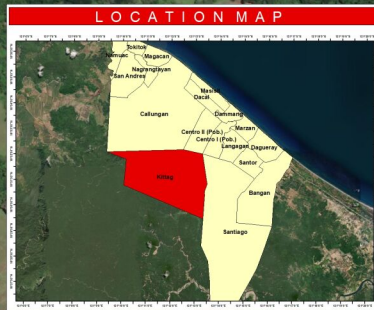
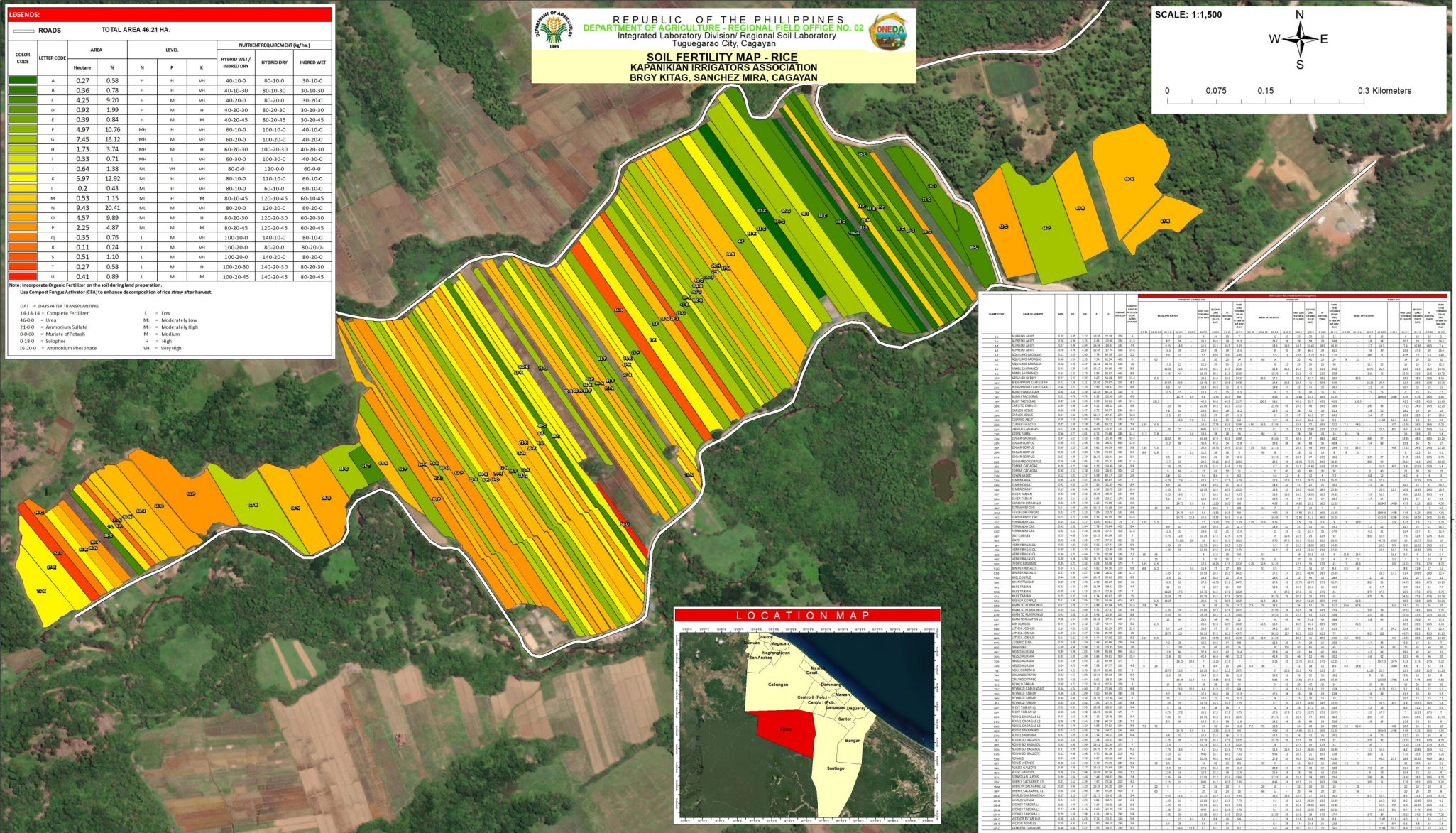


**SOIL FERTILITY MAP - RICE**  
KAPANKIAN IRRIGATORS ASSOCIATION  
BRGY KITAG, SANCHEZ MIRA, CAGAYAN

SCALE: 1:1,500



0 0.075 0.15 0.3 Kilometers



121°11'30"E

121°12'0"E

121°12'30"E

Prepared by:

Reviewed by:

Noted by:

Approved by:

SOIL FERTILITY MAPPING GROUP  
Integrated Laboratory Division/  
Regional Soil Laboratory

DOÑA ARRA C. CALIBUYUT  
Agriculturist II

FEVIE RICA A. ANCHETA, RCh  
Chem. IV/Chief, RSL

GERLY T. ZULUETA, DVM  
OIC-Chief, Integrated Laboratory  
Division

ROBERTO P. BERNARDO, DVM  
OIC-Regional Technical Director  
for Operation and Extension

ROSALY M. MAQUINO  
Regional Technical Director  
for Research and Regulations

NARCISO A. EDILLO, M.A. Ed  
Regional Executive Director

This Soil Fertility Map was produced under the collaborative undertaking of the Department of Agriculture Regional Field Office No. 02, Regional Soil Laboratory and Local Government Unit. CY 2022 Boundaries are not considered authoritative.  
The Department of Agriculture Regional Field Office No. 02 claims the sole responsibility for any omissions/errors in this map. Users are requested to inform the DA-RFO2 Integrated Laboratory Division, Tuguegarao City, Cagayan.

Distributed by:  
Department of Agriculture, RFO 02  
Regional Soil Laboratory  
Soil Fertility Mapping Group  
© Copyright Reserved 2022