

**Corn Soil Fertility Map
Corn Riverflood Area
Municipality of
Reina Mercedes
Province of Isabela**

Prepared By:

BEVERLYANNE D. TAMAYAO
JOANA ROSE R. ROQUE
LORDAN P. LENTINO
ISAGANI S. CABALSI
JOUIE D. SUMIGAD
JOEY A. CALUCAG
ELEAZAR GABRIEL A. CASTILLO
SALLY JANE P. BALBUENA

Reviewed By:

ANGELITAB. CALUBAQUIB
Agriculturist II

GENEROSO M. OLI
Engineer III

RESTITUTO E. SAMATRA
Chief, RAEG

NENITA M. YABIS
AGRI.II/ARCC

ORLANDO J. LORENZANA
Regional Technical Director

LUCRECIO R. ALVIAR, JR., CE SO III
Regional Executive Director

Date: CCS WGS 1984

Map Source:
Google Earth: 15.9.3.2197
© 2013 Google
© 2013 Google
© 2013 Google

This Map was produced under the collaborative undertaking of the Department of Agriculture Regional Field Office No. 02, Regional Agricultural Engineering Group and the Local Government Unit, Cayan.

Boundaries are not considered authoritative.

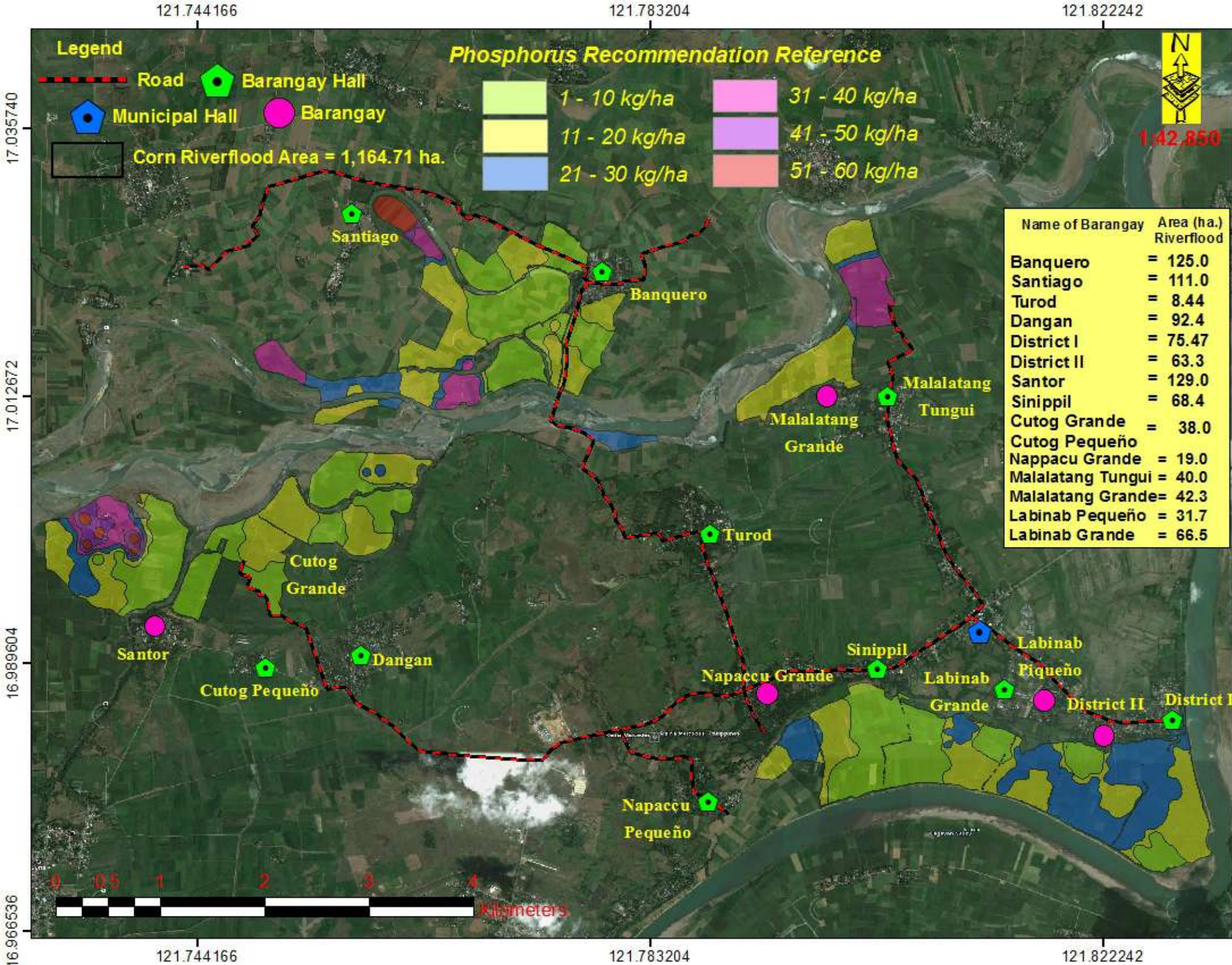
The Department of Agriculture Regional Field Office No. 02, claims the sole responsibility to any omission / errors of the map users are requested to inform the DA-RFO 02, RAEG, San Gabriel, Tuguegarao City, Cayan.

Fertilizer Recommendation Reference: Reliable for 3 years

Distributed by: Department of Agriculture, RFO 02 Regional Agricultural Engineering Group, Corn Soil Fertility Group

© Copy Right Reserved.

DATE ACCOMPLISHED:
OCTOBER, 2014



**Corn Soil Fertility Map
Corn Riverflood Area
Municipality of
Reina Mercedes
Province of Isabela**

Prepared By:

BEVERLYANNE D. TAMAYAO
JOANA ROSE R. ROQUE
LORDAN P. LENTINO
ISAGANI S. CABALSI
JOUIE D. SUMIGAD
JOEY A. CALUCAG
ELEAZAR GABRIEL A. CASTILLO
SALLY JANE P. BALBUENA

Reviewed By:

ANGELITA B. CALUBAQUIB
Agriculturist II
GENEROSO M. OLI
Engineer III
RESTITUTO E. SAMATRA
Chief, RAEG
NENITA M. YABIS
AGRI.II/ARCC
ORLANDO J. LORENZANA
Regional Technical Director
LUCRECIO R. ALVIAR, JR., CE SO III
Regional Executive Director

Date: CCS WGS 1984

Map Source:
Google Earth: 15.9.3.2197
© 2013 Google
© 2013 Google
© 2013 Google

This map was produced under the collaborative undertaking of the Department of Agriculture Regional Field Office No. 02, Regional Agricultural Engineering Group and the Local Government Unit, Cebu City.

Boundaries are not considered authoritative.

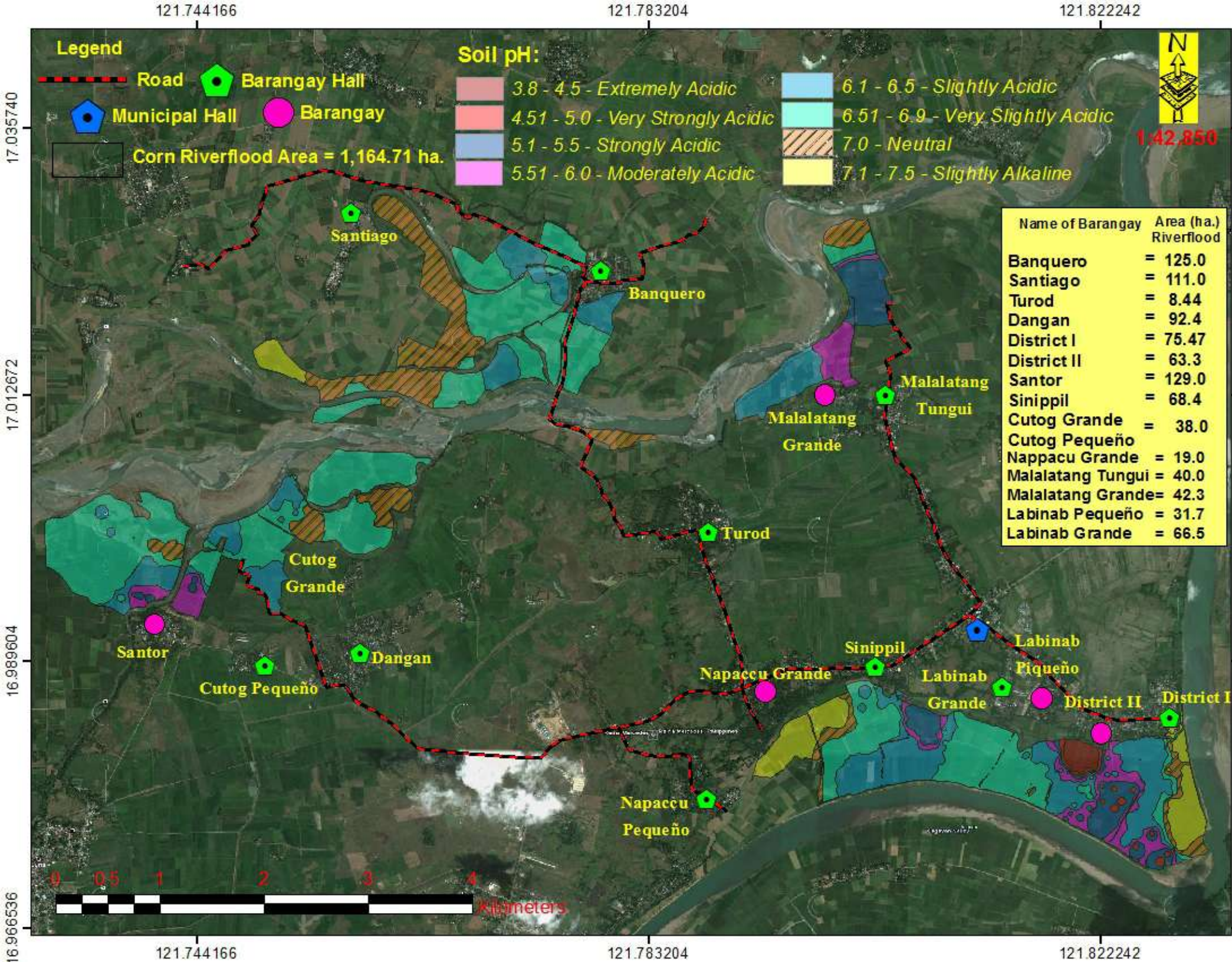
The Department of Agriculture Regional Field Office No. 02, claims the sole responsibility to any omission / errors of the map users are requested to inform the DA-RO 02, RAEG, San Gabriel, Tuguegarao City, Cebu City.

Fertilizer Recommendation Reference: Reliable for 3 years

Distributed by: Department of Agriculture, RO 02 Regional Agricultural Engineering Group, Corn Soil Fertility Group

© Copy Right Reserved.

DATE ACCOMPLISHED:
OCTOBER, 2014



pH Map
Corn Riverflood Area
Municipality of
Reina Mercedes
Province of Isabela

Prepared By:

BEVERLYANNE D. TAMAYAO
 JOANA ROSE R. ROQUE
 LORDAN P. LENTINO
 ISAGANI S. CABALSI
 JOUIE D. SUMIGAD
 JOEY A. CALUCAG
 ELEAZAR GABRIEL A. CASTILLO
 SALLY JANE P. BALBUENA

Reviewed By:

ANGELITA B. CALUBAQUIB
 Agriculturist II

GENEROSO M. OLI
 Engineer III

RESTITUTO E. SAMATRA
 Chief, RAEG

NENITA M. YABIS
 AGRI.II/ARCC

ORLANDO J. LORENZANA
 Regional Technical Director

LUCRECIO R. ALVIAR, JR., CE SO III
 Regional Executive Director

Date: CCS WGS 1984

Map Source:
 Google Earth: 15.9.3.2197
 © 2013 Google
 © 2013 Google
 © 2013 Google

This pH Map was produced under the collaborative undertaking of the Department of Agriculture Regional Field Office No. 02, Regional Agricultural Engineering Group and the Local Government Unit, Cayan.

Boundaries are not considered authoritative.

The Department of Agriculture Regional Field Office No. 02, claims the sole responsibility to any omission / errors of the map users are requested to inform the DA-RFO 02, RAEG, San Gabriel, Tuguegarao City, Cayan.

Fertilizer Recommendation Reference: Reliable for 3 years

Distributed by: Department of Agriculture, RFO 02 Regional Agricultural Engineering Group, Com. Soil Fertility Group

© Copy Right Reserved.

DATE ACCOMPLISHED:
 OCTOBER, 2014