

PHOSPHORUS MAP **Corn Riverflood Area** **Municipality of Gamu** **Province of Isabela**

Prepared By:

ISAGANI S. CABALSI

JOUIE D. SUMGAD

ELEAZAR GABRIEL A. CASTILLO

SALLY JANE P. BALBUENA

Reviewed By:

ANGELITA B. CALUBAQUIB

Science Research Specialist II

RESTITUTO E. SAMATRA

Chief, RAEG

VICENTE I. MIGUEL

Assistant Regional Corn Coordinator

ORLANDO J. LORENZANA

Regional Technical Director

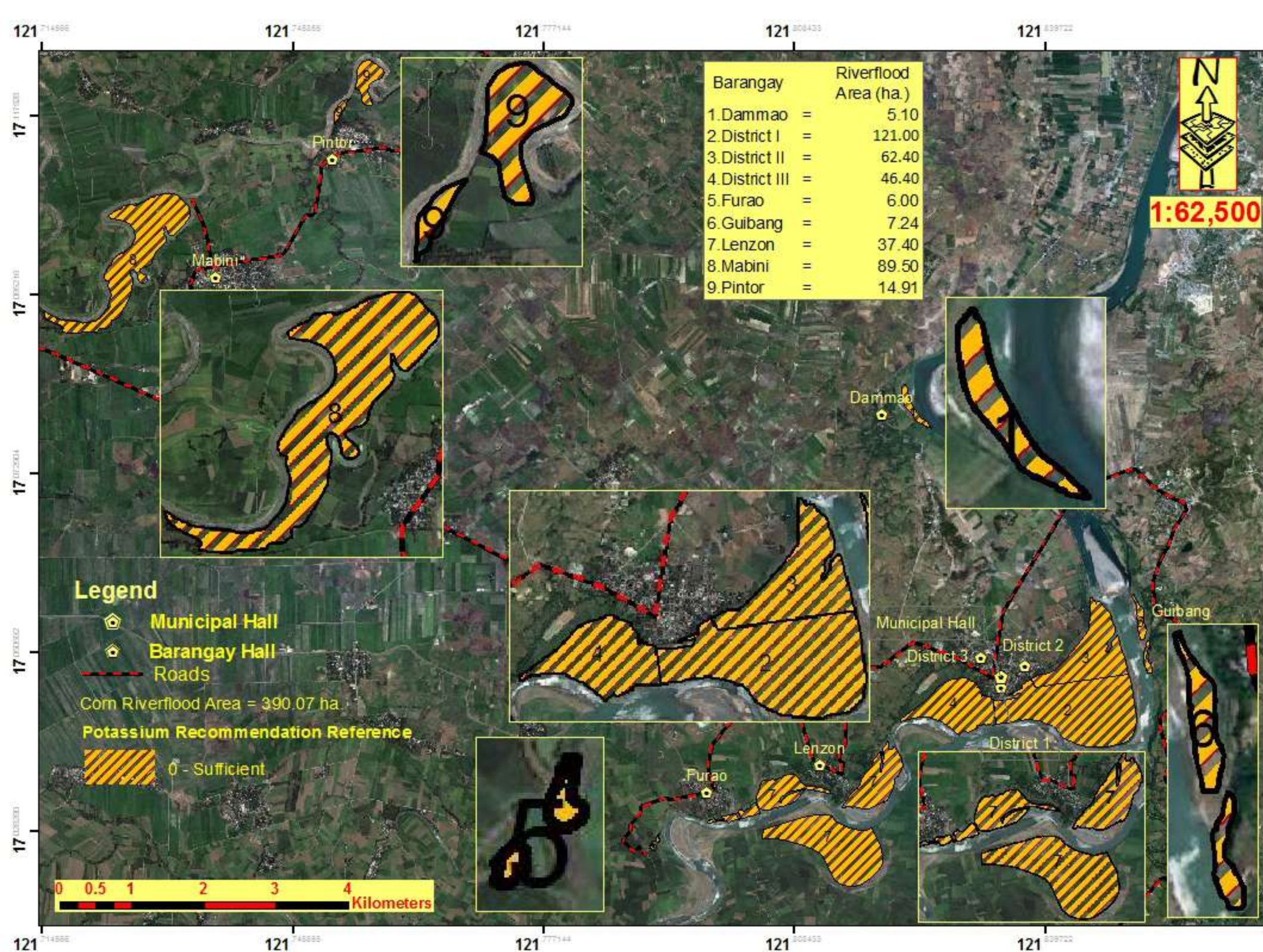
LUCRECIO R. ALVARO, JR., CESO III

Regional Executive Director

Scale: 1:62,500
 Map Source:
 Google Earth V8.3.2.07
 11 2015 0000 P
 11 2015 0000 P
 11 2015 0000 P
 This map was prepared under the supervision of the Department of Agriculture Regional Field Office No. 12, Regional Agricultural Engineering Group and the Local Government Unit, CY 2015.
 Resources are not mentioned in this map.
 The Department of Agriculture Regional Field Office No. 12, under the supervision of the Regional Agricultural Engineering Group, has prepared this map. The map is not for sale. The map is for the use of the Department of Agriculture, Regional Field Office No. 12, and the Local Government Unit, CY 2015.
 Prepared by: Department of Agriculture, Regional Field Office No. 12, Regional Agricultural Engineering Group, and the Local Government Unit, CY 2015.
 Copyright: Department of Agriculture, Regional Field Office No. 12, Regional Agricultural Engineering Group, and the Local Government Unit, CY 2015.



DATE ACCOMPLISHED:
 SEPTEMBER, 2015



POTASSIUM MAP **Corn Riverflood Area** **Municipality of Gamu** **Province of Isabela**

Prepared By:

ISAGANI S. CABALSI

JOUIE D. SUMGAD

ELEAZAR GABRIEL A. CASTILLO

SALLY JANE P. BALBUENA

Reviewed By:

ANGELITA B. CALUBAQUIB

Science Research Specialist II

RESTITUTO E. SAMATRA

Chief, RAEG

VICENTE I. MIGUEL

Assistant Regional Corn Coordinator

ORLANDO J. LORENZANA

Regional Technical Director

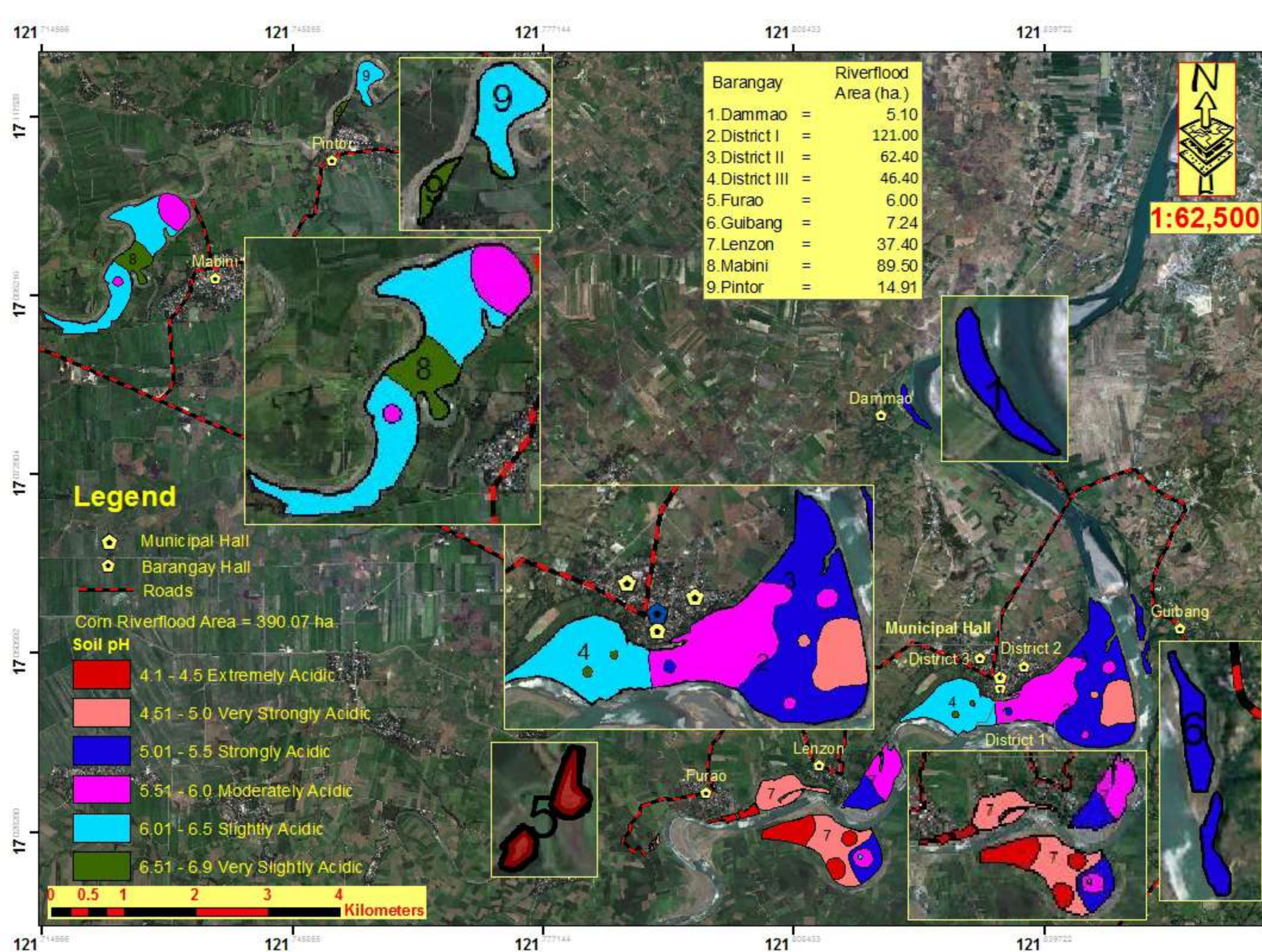
LUCRECIO R. ALVARO, JR., CESO III

Regional Executive Director

Scale: 1:62,500
 Map Source:
 Google Earth V8.3.2.07
 11 2015 0000 P
 11 2015 0000 P
 11 2015 0000 P
 This map was prepared under the supervision and technical assistance of the Department of Agriculture Regional Field Office No. 12, Regional Agricultural Engineering Group and the Local Government Unit, CY 2015.
 Resources are not mentioned in this map.
 The Department of Agriculture Regional Field Office No. 12, under the supervision of the Regional Agricultural Engineering Group and the Local Government Unit, CY 2015.
 Potassium Recommendation Reference: 0 - Sufficient
 District 1, Department of Agriculture, RAEG Regional Agricultural Engineering Group, CY 2015.
 Copyright: RAEG Regional Agricultural Engineering Group, CY 2015.
 All Rights Reserved.



DATE ACCOMPLISHED:
 SEPTEMBER, 2015



pH MAP

Corn Riverflood Area Municipality of Gamu Province of Isabela

Prepared By:

ISAGANI S. CABALSI

JOUIE D. SUMGAD

ELEAZAR GABRIEL A. CASTILLO

SALLY JANE P. BALBUENA

Reviewed By:

ANGELITA B. CALBAQUIB

Science Research Specialist II

RESTITUTO E. SAMATRA

Chief, RAEG

VICENTE I. MIGUEL

Assistant Regional Corn Coordinator

ORLANDO J. LORENZANA

Regional Technical Director

LUCRECIO R. ALVARO, JR., CESO III

Regional Executive Director

Scale: 1:62,500
Map Source:
Google Earth V8.3.2.01
11 2015 0000 P
11 2015 0000 P
11 2015 0000 P
This pH Map was prepared under the supervision and technical assistance of the Department of Agriculture Regional Field Office No. 12, Regional Agricultural Engineering Group and the Local Government Unit, CY 2015.
Revisions are not mentioned in this map.
The Department of Agriculture Regional Field Office No. 12, under the supervision of the Regional Agricultural Engineering Group, has conducted a soil survey of the Corn Riverflood Area in the Municipality of Gamu, Province of Isabela, and the results are presented in this map.
Copyright:
Regional Agricultural Engineering Group, Department of Agriculture, RPO 12 Regional Agricultural Engineering Group, Gamu, Isabela, Philippines.
Copyright Reserved.



DATE ACCOMPLISHED:
SEPTEMBER, 2015