

1 : 50,000

0 0.2 0.4 0.8 1.2 1.6 Kilometers



Date: December 2, 2017

CORN NITROGEN MAP

Municipality of STA. MARIA
Province of Isabela, Philippines

Prepared by:

Eric G. Mata Jouié D. Sumigad

Isagani S. Cabalsi Geze James V. Binuyat

Sally Jane B. Duruin Chinkee A. Agustin

Aarone M. Furugganan Alister Earl M. Meman

Crescen Karl M. Espejo Eleazar Gabriel A. Castillo

Kenneth Godfrey M. De Leon

Reviewed by:

ANGELITA B. CALUBAQUIB
Science Research Specialist II

Noted by:

RESTITUTO E. SAMATRA
Chief, RAED

NENITA M. YABIS
Asst. Regional Com Coordinator

ORLANDO J. LORENZANA
Regional Technical Director

LUCRECIO R. ALVIAR, JR., CESO III
Regional Executive Director

Date: 02/11/2018

Map Source: Google Earth/100% DTM

#100 000000

#100 000000

#100 000000

This Corn Nitrogen Map was produced under the administrative supervision of the Department of Agriculture Regional Field Office - II, Regional Agricultural Engineering Group and the Local Government Unit, 2017.

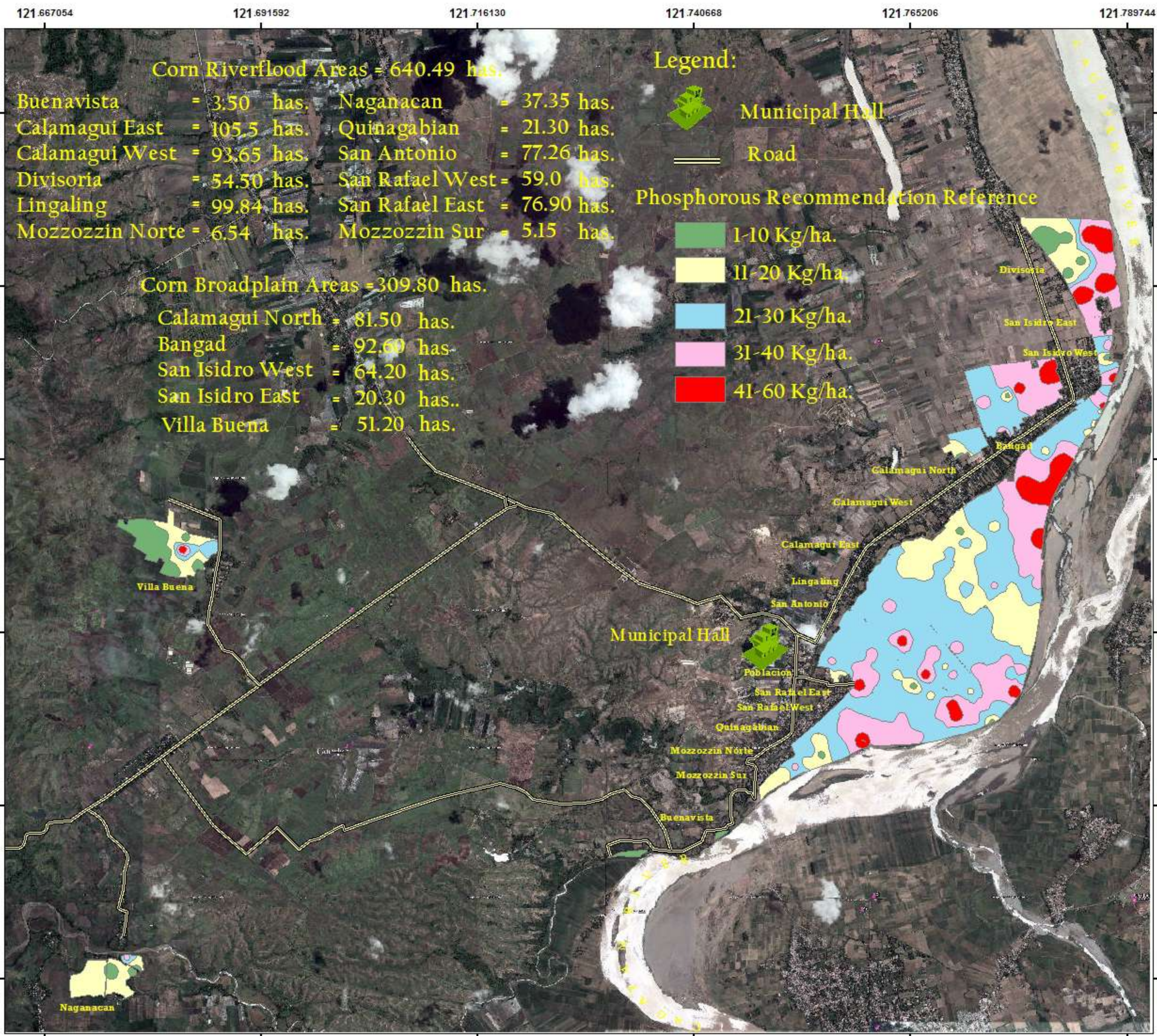
Boundaries and areas were derived from the Department of Agriculture Regional Field Office - II data and the map was verified by the Department of Agriculture Regional Field Office - II, Regional Agricultural Engineering Group and the Local Government Unit, 2017.

This Corn Nitrogen Map was produced under the administrative supervision of the Department of Agriculture Regional Field Office - II, Regional Agricultural Engineering Group and the Local Government Unit, 2017.

This Corn Nitrogen Map was produced under the administrative supervision of the Department of Agriculture Regional Field Office - II, Regional Agricultural Engineering Group and the Local Government Unit, 2017.

This Corn Nitrogen Map was produced under the administrative supervision of the Department of Agriculture Regional Field Office - II, Regional Agricultural Engineering Group and the Local Government Unit, 2017.

This Corn Nitrogen Map was produced under the administrative supervision of the Department of Agriculture Regional Field Office - II, Regional Agricultural Engineering Group and the Local Government Unit, 2017.



Corn Riverflood Areas = 640.49 has.

Buonavista	= 3.50 has.	Naganacan	= 37.35 has.
Calamagui East	= 105.5 has.	Quinagabian	= 21.30 has.
Calamagui West	= 93.65 has.	San Antonio	= 77.26 has.
Divisoria	= 54.50 has.	San Rafael West	= 59.0 has.
Lingaling	= 99.84 has.	San Rafael East	= 76.90 has.
Mozzozzin Norte	= 6.54 has.	Mozzozzin Sur	= 5.15 has.

Corn Broadplain Areas = 309.80 has.

Calamagui North	= 81.50 has.
Bangad	= 92.60 has.
San Isidro West	= 64.20 has.
San Isidro East	= 20.30 has..
Villa Buena	= 51.20 has.

Legend:

-  Municipal Hall
-  Road

Phosphorous Recommendation Reference

-  1-10 Kg/ha.
-  11-20 Kg/ha.
-  21-30 Kg/ha.
-  31-40 Kg/ha.
-  41-60 Kg/ha.



1 : 50,000



CORN PHOSPHOROUS MAP

Municipality of STA.MARIA
Province of Isabela, Philippines

Prepared by:

- | | |
|------------------------|-----------------------------|
| Eric G. Mata | Jouie D. Sumigad |
| Isagani S. Cabalsi | Geze James V. Binuyat |
| Sally Jane B. Duruin | Chinke e A. Agustin |
| Aarone M. Furugganan | Alister Earl M. Meman |
| Crescen Karl M. Espejo | Eleazar Gabriel A. Castillo |

Kenneth Godfrey M. De Leon

Reviewed by:

ANGELITA B. CALUBAQUIB
Science Research Specialist II

Noted by:

RESTITUTO E. SAMATRA
Chief, RAED

NENITA M. YABIS
Asst. Regional Com Coordinator

ORLANDO J. LORENZANA
Regional Technical Director

LUCRECIO R. ALVIAR, JR., CESO III
Regional Executive Director

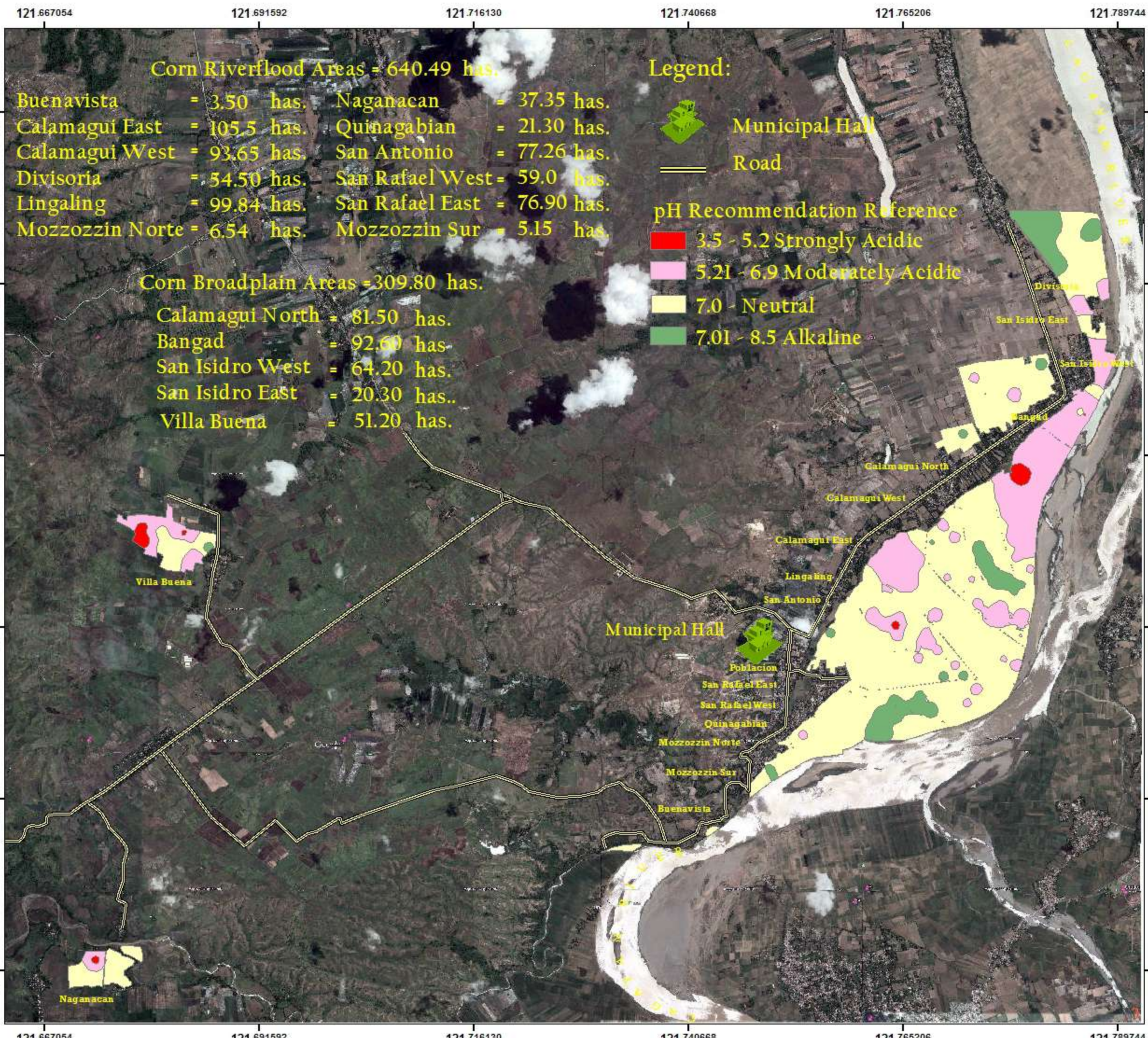
Scale: 1:50,000
Map Source: Google Earth/10/03/2017
#100 000000
#100 000000
#100 000000
#100 000000

This Corn Phosphorous Map was prepared under the collaborative undertaking of the Department of Agriculture Regional Office I, the Regional Agricultural Engineering Group and the Local Government Unit, STA. MARIA.

Boundaries are not a legal guarantee. The Department of Agriculture Regional Office I does not assume any liability for any errors or omissions in the map. It is the responsibility of the user to verify the accuracy of the map.

Published by: Department of Agriculture, Region I
Regional Agricultural Engineering Group
Corn Phosphorous Map

#Copyright Reserved



CORN pH MAP

Municipality of STA.MARIA
Province of Isabela, Philippines

Prepared by:

Eric G. Mata	Jouie D. Sumigad
Isagani S. Cabalsi	Geze James V. Binuyat
Sally Jane B. Duruin	Chinke e A. Agustin
Aarone M. Furugganan	Alister Earl M. Meman
Crescen Karl M. Espejo	Eleazar Gabriel A. Castillo

Kenneth Godfrey M. De Leon

Reviewed by:

ANGELITA B. CALUBAQUIB
Science Research Specialist II

Noted by:

RESTITUTO E. SAMATRA
Chief, RAED

NENITA M. YABIS
Asst. Regional Com Coordinator

ORLANDO J. LORENZANA
Regional Technical Director

LUCRECIO R. ALVIAR, JR., CESO III
Regional Executive Director

Scale: 1:50,000
Map Source: Google Earth/100000000
#100000000
#100000000
#100000000

This map was prepared under the supervision and approval of the Department of Agriculture Regional Office II, Regional Agricultural Engineering Group and the Local Government Unit, Sta. Maria.

Boundaries are not shown in this map.

The Department of Agriculture Regional Office II does not take any responsibility for any errors or omissions in this map.

Published by: Department of Agriculture, Regional Agricultural Engineering Group, Sta. Maria, Isabela.

Copyright Reserved