

Legend:

- Barangay Hall
- Municipal Hall
- Cagayan River
- Road

Phosphorus Recommendation Reference

- 1 - 10 Kg/ha
- 11 - 20 Kg/ha
- 21 - 30 Kg/ha
- 31 - 40 Kg/ha
- 41 - 60 Kg/ha

Total Corn Hilly Area = 329.82 ha.

Barangay	Area (ha)
Caloocan	165.80
Capitol	23.32
Santor	41.0
Sitio Villa TJ, Carmencita	99.70

1:48,100

0 0.325 0.65 1.3 1.95 2.6 Kilometers

DEPARTMENT OF AGRICULTURE
1898

DEPARTMENT OF AGRICULTURE
1898

PHOSPHORUS MAP

Municipality of DELFIN ALBANO
Province of Isabela, Philippines

Prepared by:

Eric G. Mata	Joana Rose R. Roque
Jonie D. Sumigad	Chinkee A. Agustin
Isagani S. Cabalsi	Sally Jane B. Duruin
Crescen Karl M. Espejo	Adrian Joe T. Moreno
Eleazar Gabriel A. Castillo	Alister Earl M. Meman
Kenneth Godfrey M. De Leon	Aarone M. Furugganan

Reviewed by:

ANGELITA B. CALUBAQUIB
Science Research Specialist II

Noted by:

RESTITUTO E. SAMATRA
Chief, RAED

NENITA M. YABIS
Asst. Regional Corn Coordinator

ROSE MARY G. AQUINO
OIC - Regional Technical Director

LORENZO M. CARANGUIAN, DPA
Regional Executive Director

Version: 1.0, 2018

Map Source: Google Earth Pro V8.0.1200

© 2018 GADMIS

© 2018 GADMIS

© 2018 GADMIS

This map was prepared under the supervision and control of the Department of Agriculture Regional Field Office 02 - Corn Fertility Group and the Local Government Unit of Delfin Albano.

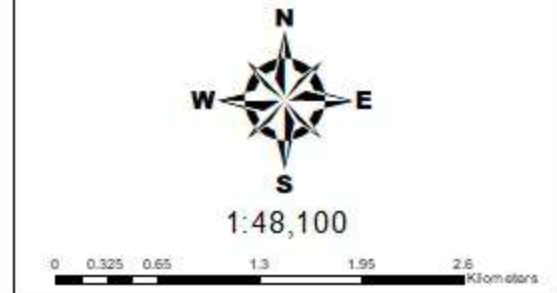
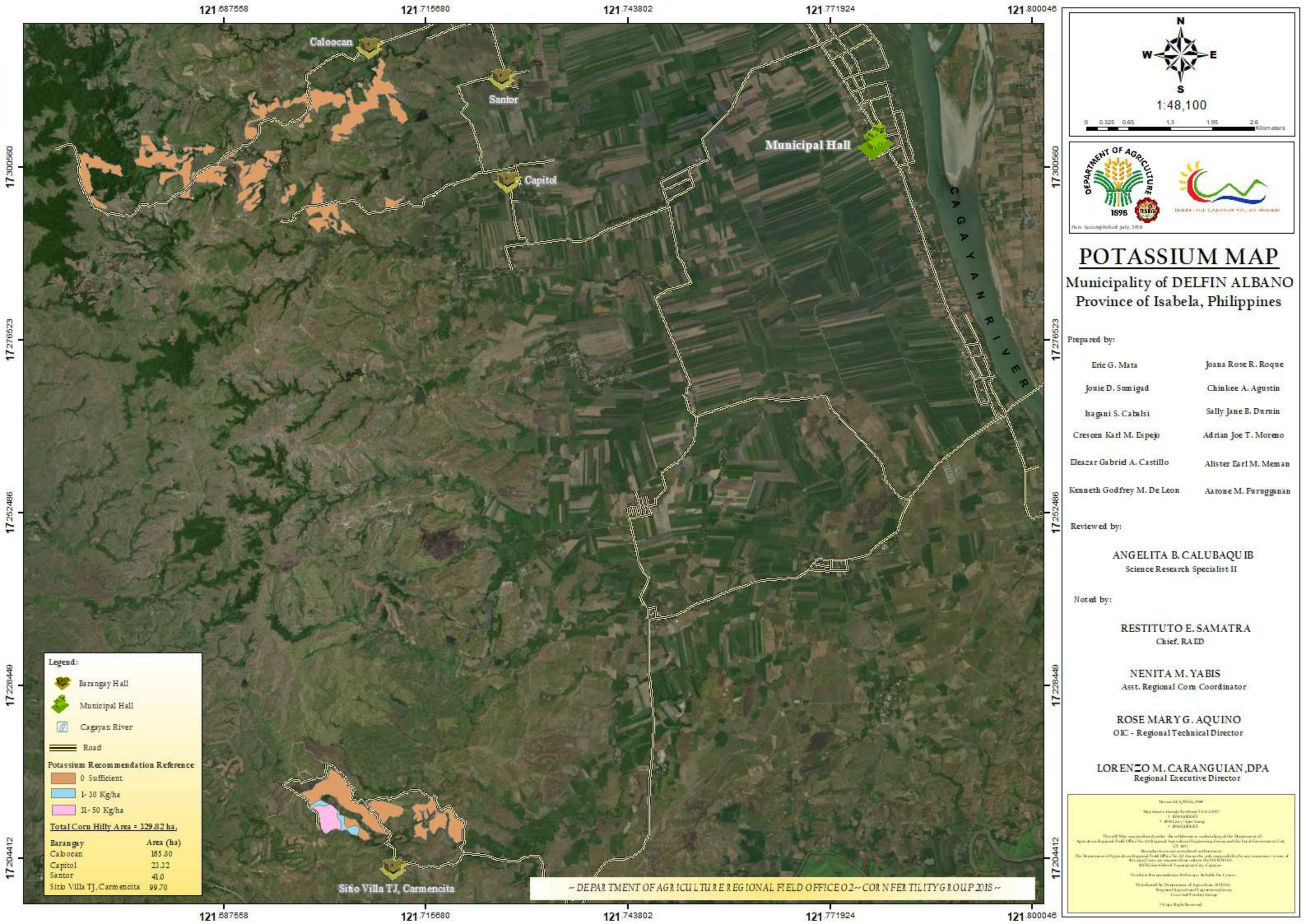
Boundaries are not guaranteed by the Department of Agriculture Regional Field Office 02 - Corn Fertility Group and the Local Government Unit of Delfin Albano.

The Department of Agriculture Regional Field Office 02 - Corn Fertility Group and the Local Government Unit of Delfin Albano are not responsible for any consequences of the use of this map.

Revised for use in the future.

Downloaded by: Department of Agriculture, RFO 02
Regional Agricultural Extension Group
Corn Fertility Group

© Copy Right Reserved



POTASSIUM MAP

Municipality of DELFIN ALBANO
Province of Isabela, Philippines

Prepared by:

Eric G. Mata	Joana Rose R. Roque
Jonie D. Sumigad	Chinkee A. Agustin
Isagani S. Cabalsi	Sally Jane B. Duruin
Crescen Karl M. Espejo	Adrian Joe T. Moreno
Eleazar Gabriel A. Castillo	Alister Earl M. Meman
Kenneth Godfrey M. De Leon	Aarone M. Furugganan

Reviewed by:

ANGELITA B. CALUBAQUIB
Science Research Specialist II

Noted by:

RESTITUTO E. SAMATRA
Chief, RAED

NENITA M. YABIS
Asst. Regional Com. Coordinator

ROSE MARY G. AQUINO
OIC - Regional Technical Director

LORENZO M. CARANGUIAN, DPA
Regional Executive Director

Legend:

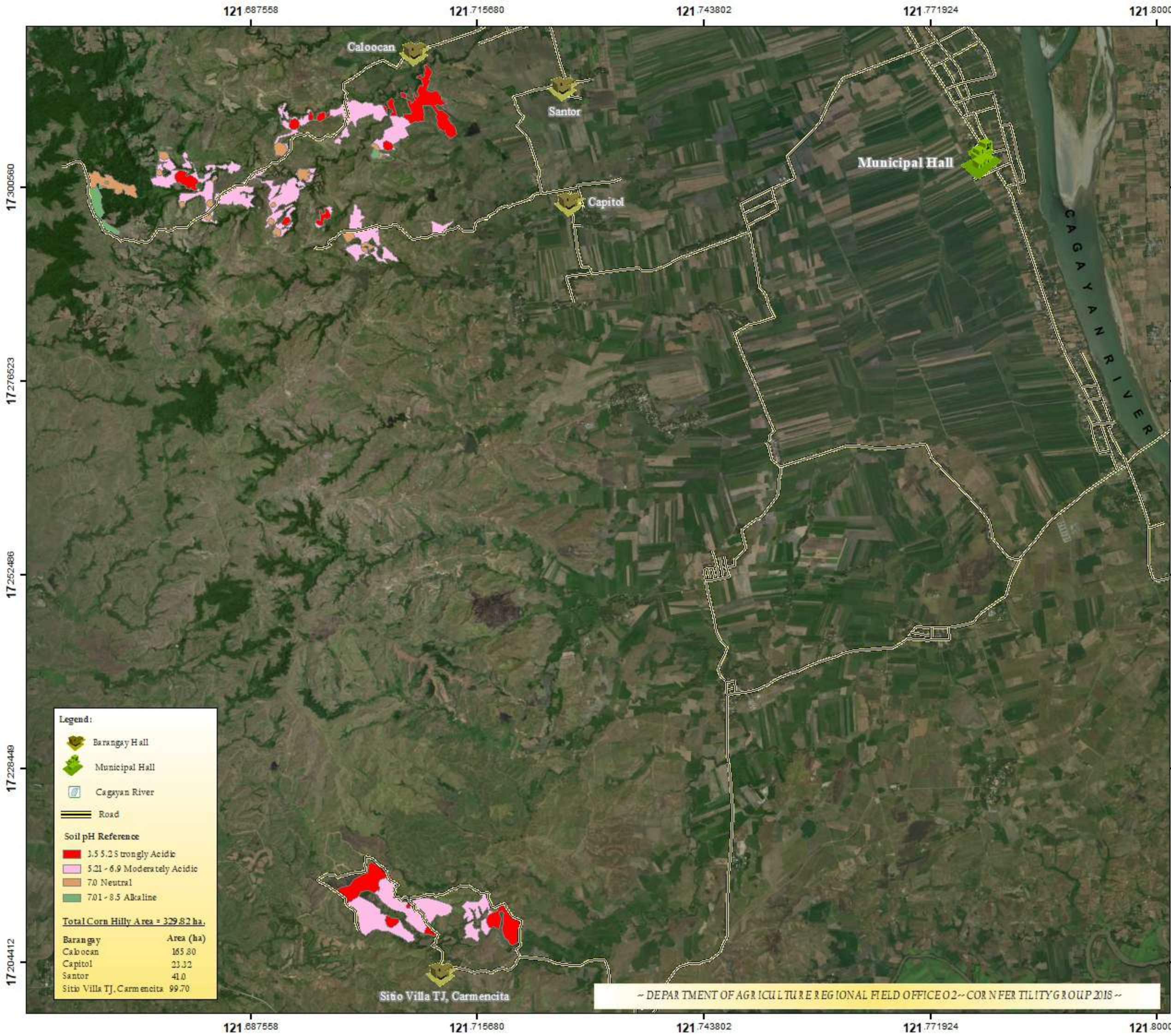
- Barangay Hall
- Municipal Hall
- Cagayan River
- Road

Potassium Recommendation Reference

- 0 Sufficient
- 1-30 Kg/ha
- 31-50 Kg/ha

Total Corn Hilly Area = 329.82 ha.

Barangay	Area (ha)
Caloocan	165.80
Capitol	23.32
Santor	41.0
Sito Villa TJ, Carmencita	99.70



Legend:

- Barangay Hall
- Municipal Hall
- Cagayan River
- Road

Soil pH Reference

- 3.5-5.25 Strongly Acidic
- 5.21-6.9 Moderately Acidic
- 7.0 Neutral
- 7.01-8.5 Alkaline

Total Corn Hilly Area = 329.82 ha.

Barangay	Area (ha)
Caloocan	165.80
Capitol	23.32
Santor	41.0
Sito Villa TJ, Carmencita	99.70

N
W E
S
1:48,100

0 0.325 0.65 1.3 1.95 2.6 Kilometers

DEPARTMENT OF AGRICULTURE
1898

Isabela

Isabela Cagayan Valley Region

Date Accomplished: July, 2018

SOIL pH MAP

Municipality of DELFIN ALBANO
Province of Isabela, Philippines

Prepared by:

Eric G. Mata	Joana Rose R. Roque
Jonie D. Sumigad	Chinkee A. Agustin
Isagani S. Cabalsi	Sally Jane B. Duruin
Crescen Karl M. Espejo	Adrian Joe T. Moreno
Eleazar Gabriel A. Castillo	Alister Earl M. Meman
Kenneth Godfrey M. De Leon	Aarone M. Furugganan

Reviewed by:

ANGELITA B. CALUBAQUIB
Science Research Specialist II

Noted by:

RESTITUTO E. SAMATRA
Chief, RAED

NENITA M. YABIS
Asst. Regional Com Coordinator

ROSE MARY G. AQUINO
OIC - Regional Technical Director

LORENZO M. CARANGUIAN, DPA
Regional Executive Director

Version: 1.0, 2018

Map Series: Isabela Region V-01, 2018

© 2018 DPA

© 2018 DPA

© 2018 DPA

This map was produced under the supervision and control of the Department of Agriculture Regional Field Office No. 02 Regional Agricultural Engineering Services and the Local Government Unit.

Boundaries are not guaranteed.

The Department of Agriculture Regional Field Office No. 02 does not take responsibility for any consequences of use of this map. Users are encouraged to consult the DPA/RAED.

RA Regional Office, Tuguegarao City, Cagayan.

For more information, please refer to the Schedule for Users.

Downloaded by Department of Agriculture, RAED

Regional Agricultural Engineering Services

Copyright Reserved