

Legend:

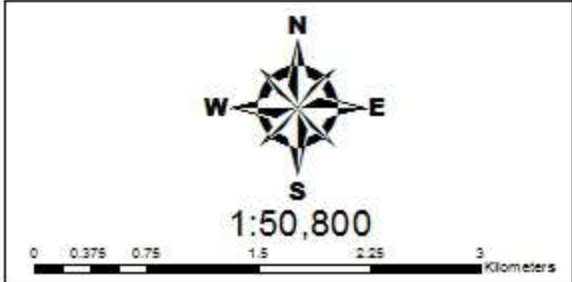
- Municipal Hall
- Barangay Hall

Road

Barangay	Area (ha)	
	Broadplain	Riverflood
Aga	15.06	00.00
Bayabo	56.61	00.00
Calinauan Sur	4.30	00.00
Caloocan	96.66	00.00
Carmencita	5.01	00.00
Concepcion	7.55	00.00
Maui	5.65	00.00
Quibal	6.36	4.42
Ragan Almacen	5.93	40.0
Ragan Norte	22.72	16.50
Ragan Sur	17.50	67.04
Rizal	8.83	13.90
Santor	84.60	00.00
San Andres	4.32	7.42
San Antonio	26.25	00.00
San Jose	5.51	79.40
San Juan	19.76	19.0
San Macario	22.90	00.00
San Nicolas	47.14	23.05
San Patricio	7.59	21.40
San Roque	00.00	22.84
Villa Luz	3.30	10.25
Visitacion	8.59	33.0

Total Corn Broadplain Area = 479.14 ha.
Total Corn Riverflood Area = 378.22 ha.
Nitrogen Recommendation Reference

- 120 - 130 Kg/ha.
- 131 - 140 Kg/ha.



CORN NITROGEN MAP

Municipality of DELFIN ALBANO
Province of Isabela, Philippines

Prepared by:

Eric G. Mata	Joana Rose R. Roque
Jouie D. Sumigad	Chinke e A. Agustin
Isagani S. Cabalsi	Sally Jane B. Duruin
Crescen Karl M. Espejo	Geze James V. Binuyat
Eleazar Gabriel A. Castillo	Alister Earl M. Meman
Kenneth Godfrey M. De Leon	Aarone M. Furugganan

Reviewed by:

ANGELITA B. CALUBAQUIB
Science Research Specialist II

Noted by:

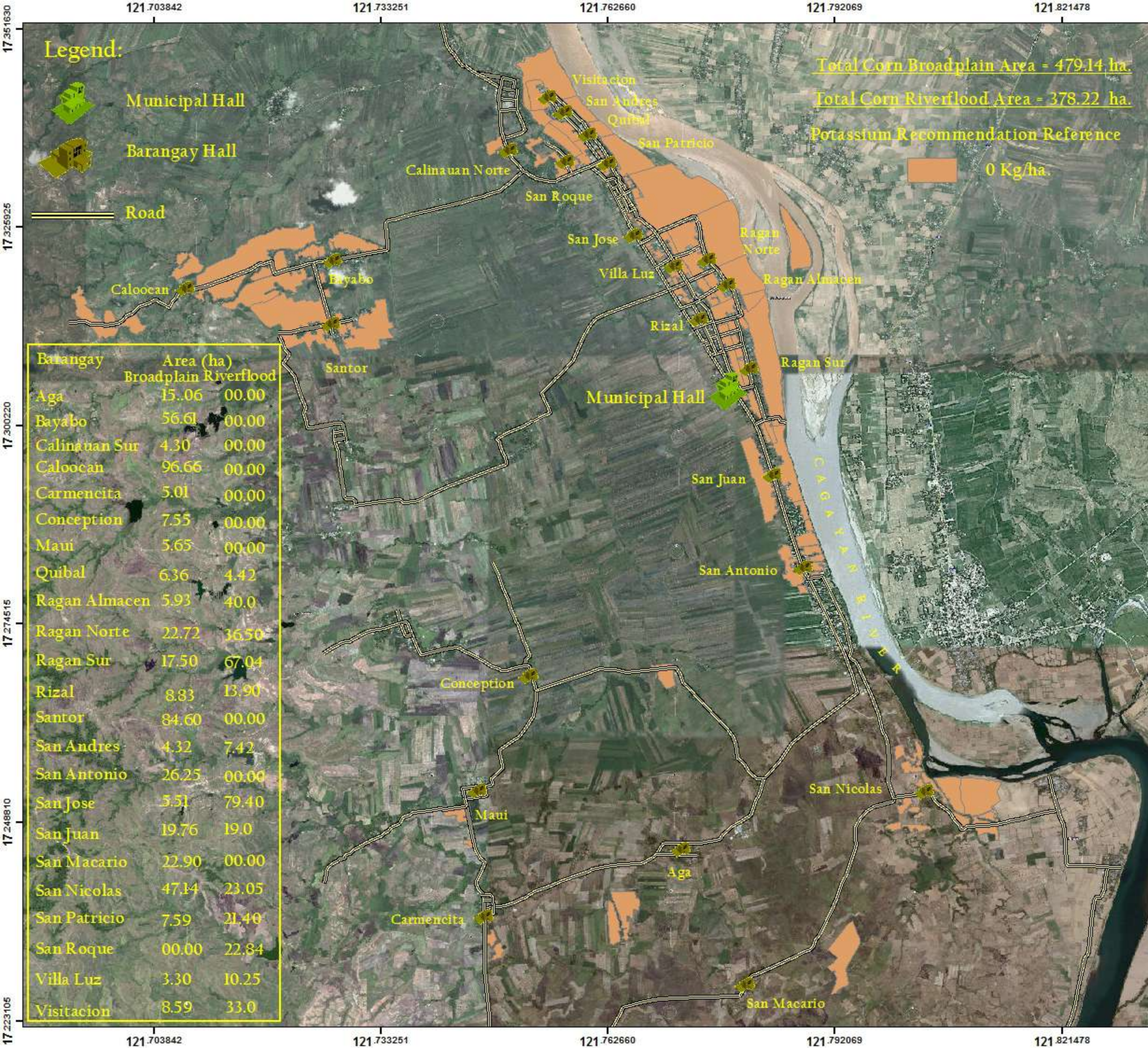
RESTITUTO E. SAMATRA
Chief, RAED

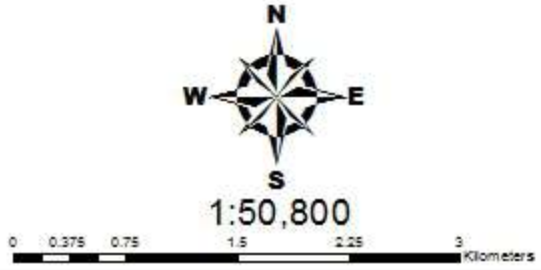
NENITA M. YABIS
Asst. Regional Corn Coordinator

ORLANDO J. LORENZANA
Regional Technical Director

NARCISO A. EDILLO, MA.Ed
Regional Executive Director


Scale: 1:50,800
Map Series: Regional Corn Nitrogen Map Series
*2017 Corn Nitrogen Map Series
*2017 Corn Nitrogen Map Series
This Corn Nitrogen Map was prepared under the administrative supervision of the Department of Agriculture Regional Office, Region I, and the Regional Agricultural Engineering Group and the Regional Corn Nitrogen Map Series.
The Department of Agriculture Regional Office, Region I, and the Regional Agricultural Engineering Group and the Regional Corn Nitrogen Map Series are responsible for the accuracy of the data and the quality of the map.
The map is a reference map and is not a legal document.
Copyright Reserved.





1:50,800

0 0.375 0.75 1.5 2.25 3 Kilometers



DEPARTMENT OF AGRICULTURE
1898

REGIONAL OFFICE
CAGAYAN VALLEY REGION

Date of Approval: August 2017

CORN POTASSIUM MAP

Municipality of DELFIN ALBANO Province of Isabela, Philippines

Prepared by:

Eric G. Mata	Joana Rose R. Roque
Jouie D. Sumigad	Chinkee A. Agustin
Isagani S. Cabalsi	Sally Jane B. Duruin
Crescen Karl M. Espejo	Geze James V. Binuyat
Eleazar Gabriel A. Castillo	Alister Earl M. Meman
Kenneth Godfrey M. De Leon	Aarone M. Furugganan

Reviewed by:

ANGELITA B. CALUBAQUIB
Science Research Specialist II

Noted by:

RESTITUTO E. SAMATRA
Chief, RAED

NENITA M. YABIS
Asst. Regional Corn Coordinator

ORLANDO J. LORENZANA
Regional Technical Director

NARCISO A. EDILLO, MA.Ed
Regional Executive Director

Scale: 1:50,800

Map Source: Google Earth/2013/2017

*2013 Corn / Potassium

*2013 Potassium

This Corn Potassium Map was produced under the administrative understanding of the Department of Agriculture Regional Office/RAED, Isabela, and the Municipality of Delfin Albano, Isabela, under the supervision of the RAED, Isabela, and the Municipal Engineer, Delfin Albano, Isabela.

The Department of Agriculture Regional Office/RAED, Isabela, and the Municipality of Delfin Albano, Isabela, are not responsible for the use of the map for any purpose other than the one for which it was prepared.

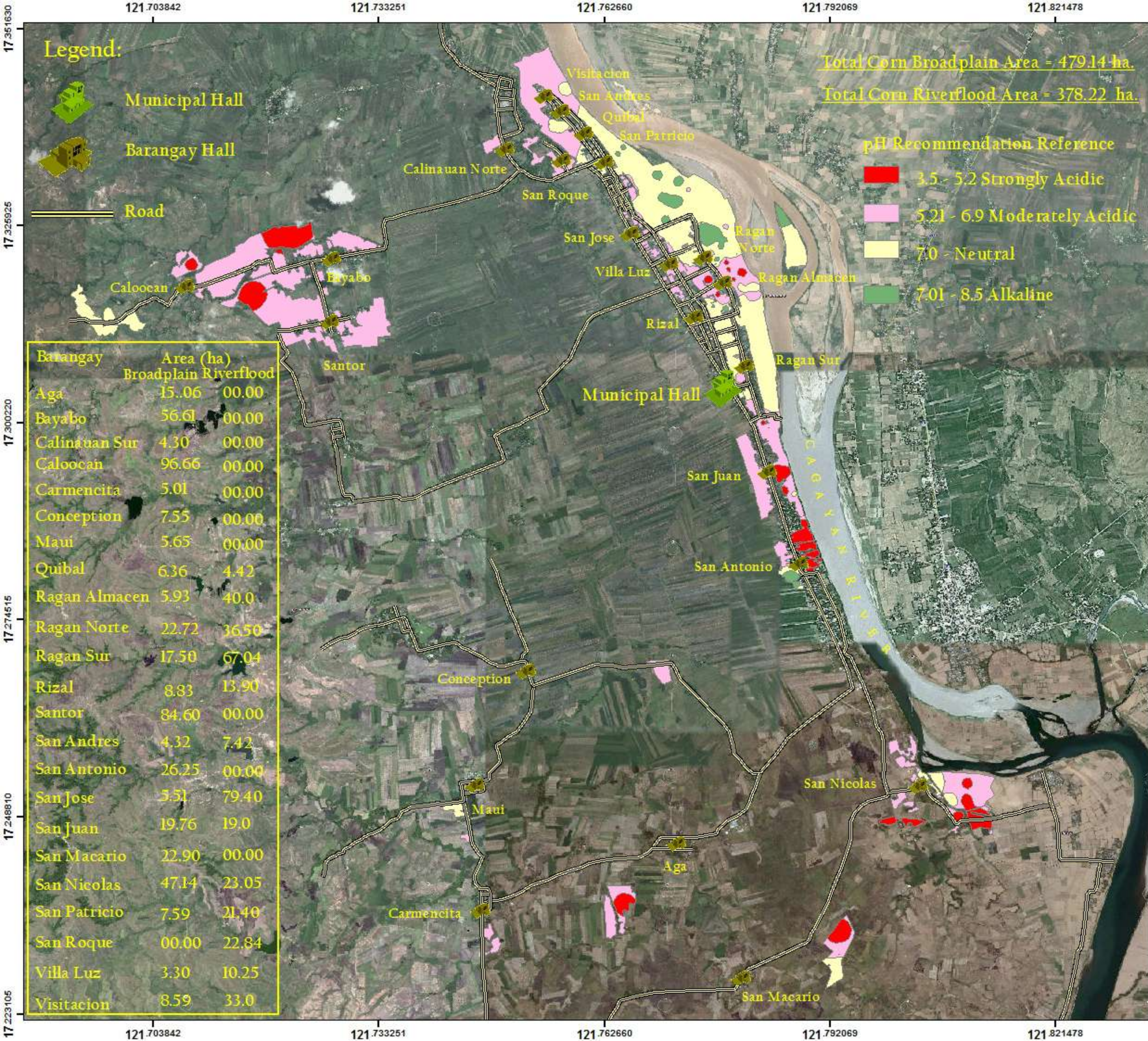
This Corn Potassium Map was prepared by the Regional Office/RAED, Isabela, and the Municipality of Delfin Albano, Isabela, under the supervision of the RAED, Isabela, and the Municipal Engineer, Delfin Albano, Isabela.

Approved by: Department of Agriculture, RAED Isabela

Regional Agricultural Engineering Group

Corn Potassium Map

*Copyright Reserved



Legend:

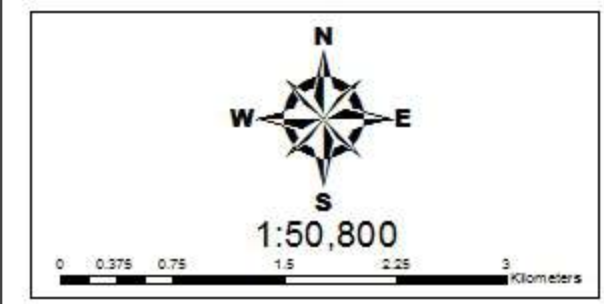
- Municipal Hall
- Barangay Hall
- Road

Total Corn Broadplain Area = 479.14 ha.
Total Corn Riverflood Area = 378.22 ha.

pH Recommendation Reference

- 3.5 - 5.2 Strongly Acidic
- 5.21 - 6.9 Moderately Acidic
- 7.0 - Neutral
- 7.01 - 8.5 Alkaline

Barangay	Area (ha)	
Broadplain	Riverflood	
Aga	15.06	00.00
Bayabo	56.61	00.00
Calinauan Sur	4.30	00.00
Caloocan	96.66	00.00
Carmencita	5.01	00.00
Conception	7.55	00.00
Maui	5.65	00.00
Quibal	6.36	4.42
Ragan Almacen	5.93	40.0
Ragan Norte	22.72	36.50
Ragan Sur	17.50	67.04
Rizal	8.83	13.90
Santor	84.60	00.00
San Andres	4.32	7.42
San Antonio	26.25	00.00
San Jose	5.51	79.40
San Juan	19.76	19.0
San Macario	22.90	00.00
San Nicolas	47.14	23.05
San Patricio	7.59	21.40
San Roque	00.00	22.84
Villa Luz	3.30	10.25
Visitacion	8.59	33.0



CORN pH MAP

Municipality of DELFIN ALBANO
Province of Isabela, Philippines

Prepared by:

- | | |
|-----------------------------|-----------------------|
| Eric G. Mata | Joana Rose R. Roque |
| Jouie D. Sumigad | Chinkee A. Agustin |
| Isagani S. Cabalsi | Sally Jane B. Duruin |
| Crescen Karl M. Espejo | Geze James V. Binuyat |
| Eleazar Gabriel A. Castillo | Alistar Earl M. Maman |
| Kenneth Godfrey M. De Leon | Aarone M. Furugganan |

Reviewed by:

ANGELITA B. CALUBAQUIB
Science Research Specialist II

Noted by:

RESTITUTO E. SAMATRA
Chief, RAED

NENITA M. YABIS
Asst. Regional Corn Coordinator

ORLANDO J. LORENZANA
Regional Technical Director

NARCISO A. EDILLO, MA.Ed
Regional Executive Director

Scale: 1:50,800
Map Source: Google Earth 2011.201
*2011 Data
*2011 Data
*2011 Data
This map was prepared under the supervision of the Department of Agriculture Regional Office II, Regional Agricultural Engineering Group and the Local Government Unit, Delfin Albano, Isabela, Philippines.
The Department of Agriculture Regional Office II, Regional Agricultural Engineering Group and the Local Government Unit, Delfin Albano, Isabela, Philippines, are responsible for the accuracy of the data and the quality of the map.
This map was prepared under the supervision of the Department of Agriculture Regional Office II, Regional Agricultural Engineering Group and the Local Government Unit, Delfin Albano, Isabela, Philippines.
This map was prepared under the supervision of the Department of Agriculture Regional Office II, Regional Agricultural Engineering Group and the Local Government Unit, Delfin Albano, Isabela, Philippines.
Copyright Reserved.